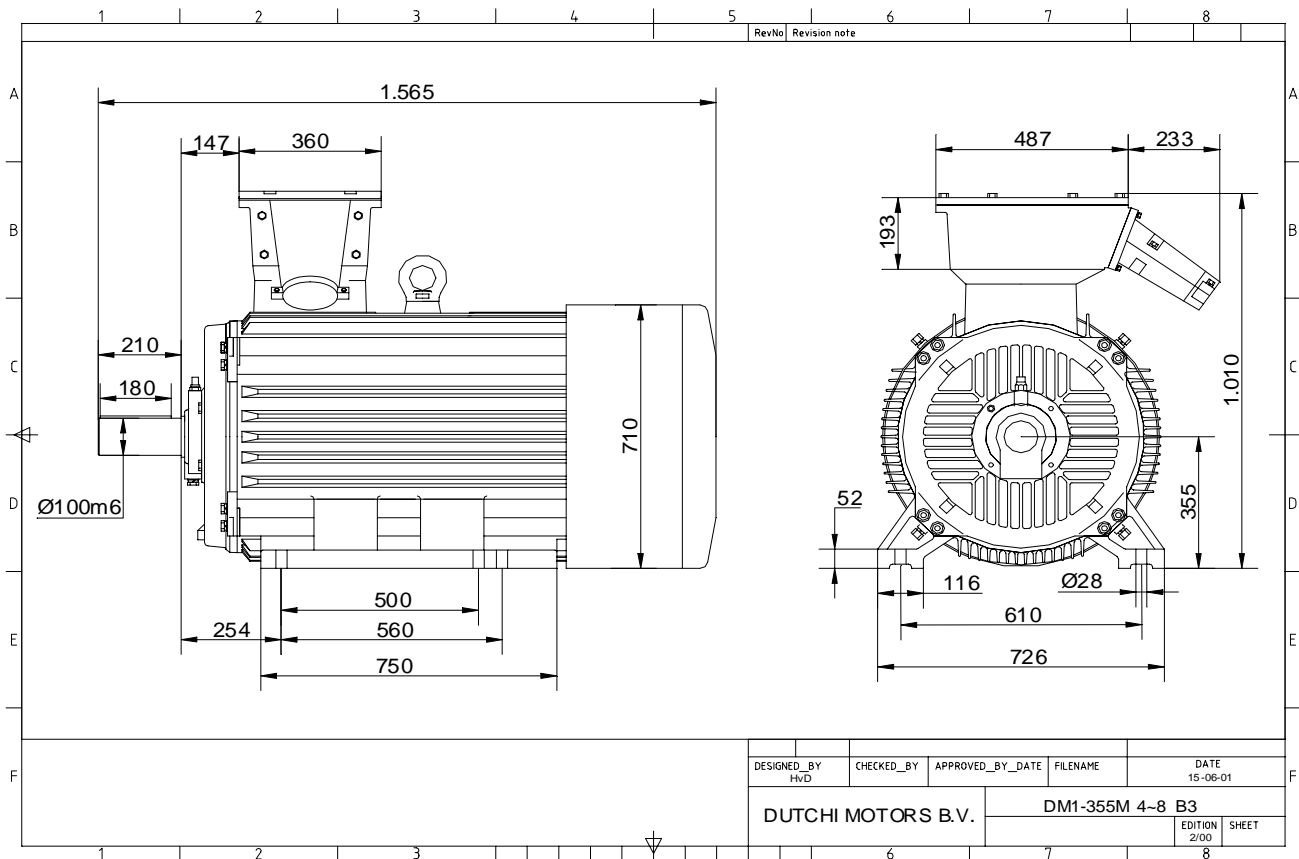


Power is our commodity, the world is our market !

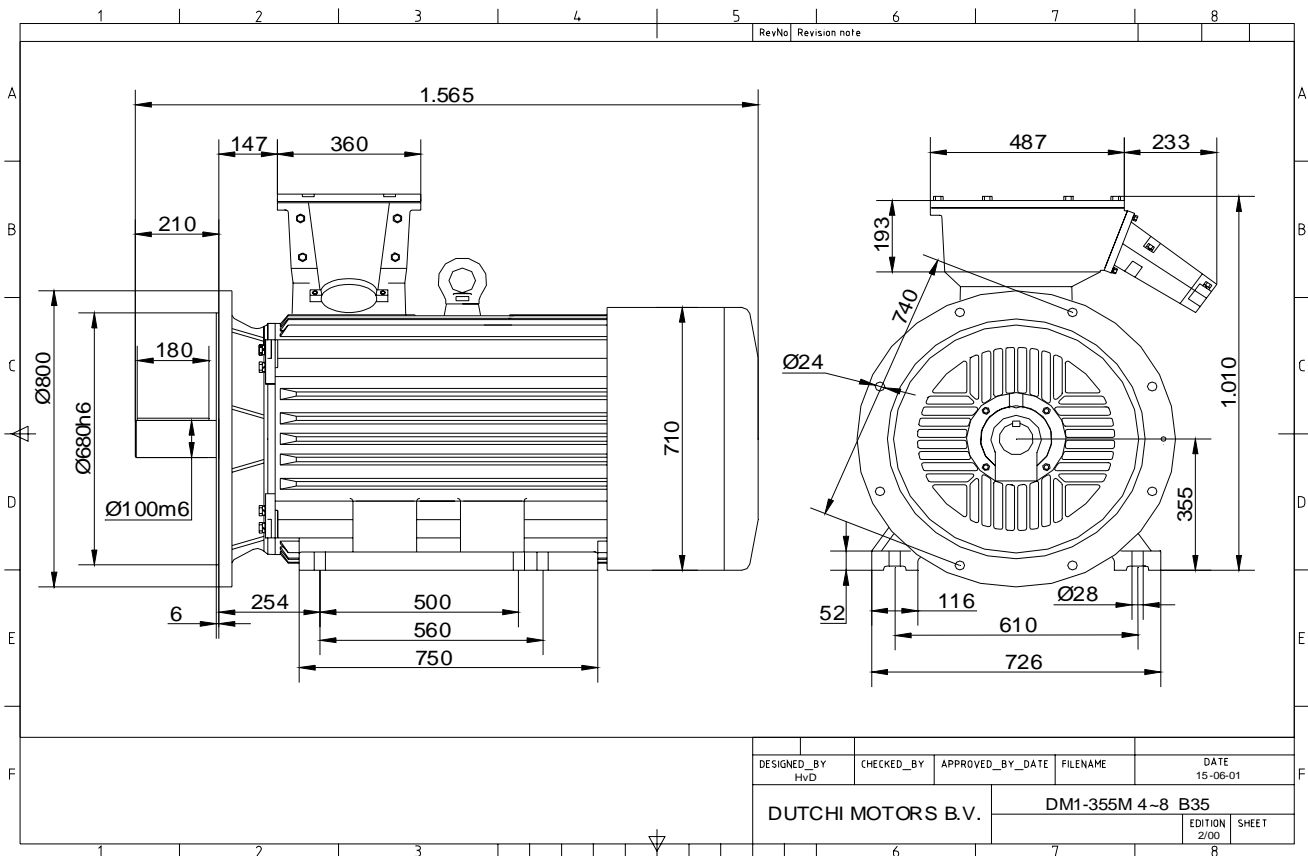


Specification	IEC 60034-1
Manufacturer	Dutchi Motors B.V.
Motor type	DM1- 355 MX8
Rated power	160 kW S1 duty
Speed	740 r.p.m
Voltage	400 / 690 V
Frequency	50 Hz
Connection	Δ / Y
Amps full load	288 / 166 A
Amps no-load(400V)	109,30 A
Enclosure	IP 55
Insulation Class	F (temp. rise B (80 K))
Max. coolant temp.	40°C
Max. altitude	1.000 mtr, above sea level
Comment	3 x PTC 150°C
Cable entries	2 x Ø 70 mm + 1 x M20x1,5 (ptc)
Feature	Cast-iron motor
Weight	1890 kg
Catalog no.	11138B60D
Warranty	12~18 months

Efficiency class	N/A			
Load data	100%	75%	50%	25%
Efficiency	94,9	94,4	92,9	88,0 %
Power factor	0,85	0,81	0,73	0,53
Sound pressure level (1m)				73,0 dB(A)
Resistance R20 (open)				0,0158 Ω
Resistance R20	Δ			0,0106 Ω
Full load torque				2064,86 Nm
DOL Starting torque vs FL torque				1,82
DOL Pull up torque vs FL torque				1,44
DOL Pull out torque vs FL torque				3,43
Star-Delta Starting torque vs FL torque				0,57
Star-Delta Pull up torque vs FL torque				0,45
Star-Delta Pull out torque vs FL torque				1,07
DOL Starting current vs FL current				6,71
Star Delta Starting current vs FL current				2,10
Rotor Inertia				14,340 kgm ²
Bearing DE				6322 - C3 or NU322
Bearing NDE				6320 - C3 (IM V1 7320B)

WI	Change	date	sign.
Dutchi Motors B.V. P.O. Box 5390 NL-6802 EJ ARNHEM Tel : +31-(0)26 - 3541 600 Fax : +31-(0)26 - 3541 650		Discription Drawing made by :	date sign. HvD
dutchi.motors@dutchi.nl www.dutchi.com		27-04-04	

Power is our commodity, the world is our market !



Specification **IEC 60034-1**
 Manufacturer **Dutchi Motors B.V.**
 Motor type **DM1- 355 MX8**
 Rated power **160** kW **S1** duty
 Speed **740** r.p.m
 Voltage **400** / **690** V
 Frequency **50** Hz
 Connection **Δ** / **Y**
 Amps full load **288** / **166** A
 Amps no-load(400V) **109,30** A
 Enclosure **IP 55**
 Insulation Class **F (temp. rise B (80 K))**

Max. coolant temp. **40°C**
 Max. altitude **1.000** mtr, above sea level
 Comment **3 x PTC 150°C**
 Cable entries **2 x Ø 70 mm + 1 x M20x1,5 (ptc)**

Feature **Cast-iron motor**
 Weight **1890** kg
 Catalog no. **11538B60D**
 Warranty **12~18 months**

Efficiency class **N/A**
 Load data 100% 75% 50% 25%
 Efficiency **94,9 94,4 92,9 88,0** %
 Power factor **0,85 0,81 0,73 0,53**

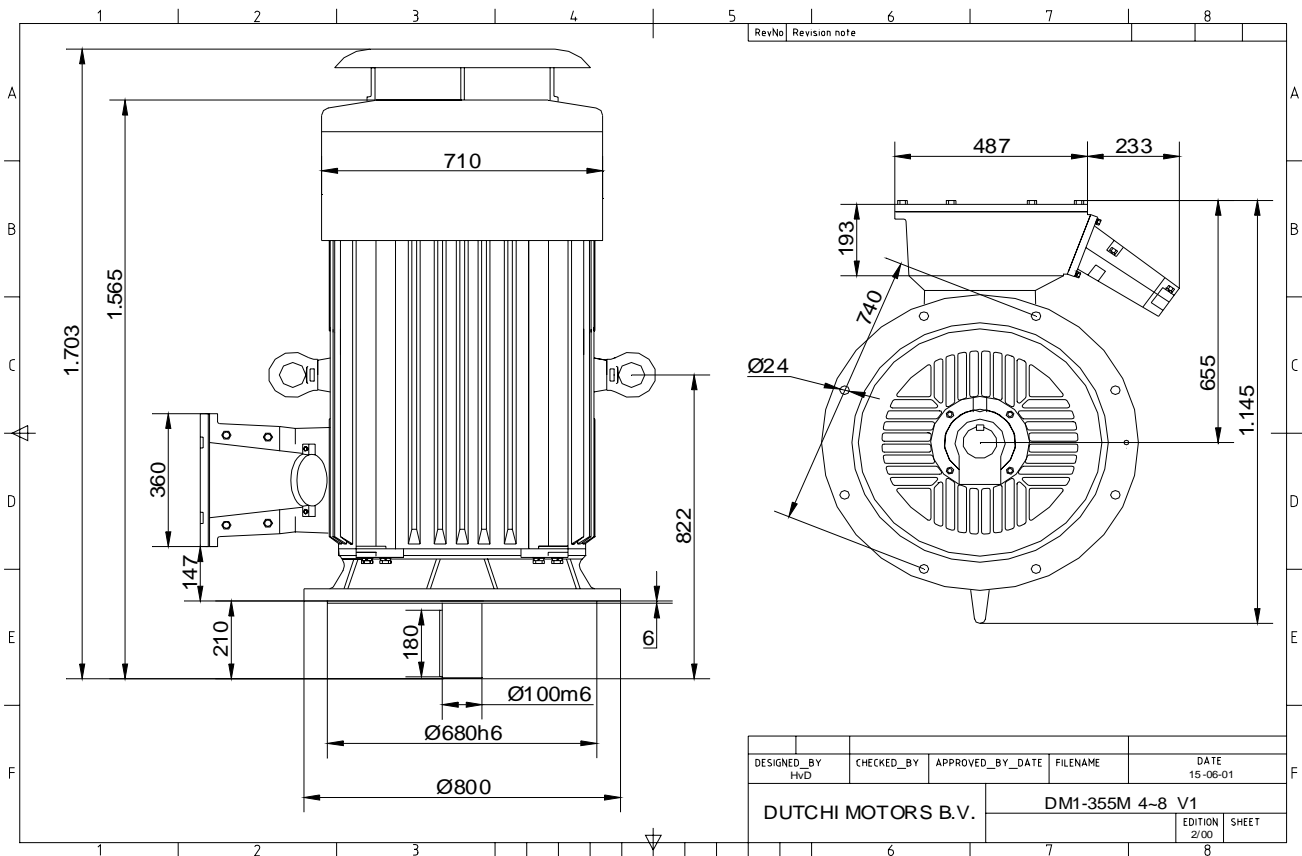
Sound pressure level (1m) **73,0** dB(A)
 Resistance R20 (open) **0,0158** Ω
 Resistance R20 **Δ 0,0106** Ω

Full load torque **2064,86** Nm
 DOL Starting torque vs FL torque **1,82**
 DOL Pull up torque vs FL torque **1,44**
 DOL Pull out torque vs FL torque **3,43**
 Star-Delta Starting torque vs FL torque **0,57**
 Star-Delta Pull up torque vs FL torque **0,45**
 Star-Delta Pull out torque vs FL torque **1,07**
 DOL Starting current vs FL current **6,71**
 Star Delta Starting current vs FL current **2,10**
 Rotor Inertia **14,340** kgm²

Bearing DE **6322 - C3 or NU322**
 Bearing NDE **6320 - C3 (IM V1 7320B)**

WI	Change	date	sign.
Dutchi Motors B.V. P.O. Box 5390 NL-6802 EJ ARNHEM Tel : +31-(0)26 - 3541 600 Fax : +31-(0)26 - 3541 650		Description Drawing made by : 27-04-04	date sign. HvD
		dutchi.motors@dutchi.nl www.dutchi.com	

Power is our commodity, the world is our market !



Specification **IEC 60034-1**
 Manufacturer **Dutchi Motors B.V.**
 Motor type **DM1- 355 MX8**
 Rated power **160** kW **S1** duty
 Speed **740** r.p.m
 Voltage **400 / 690** V
 Frequency **50** Hz
 Connection **Δ / Y**
 Amps full load **288 / 166** A
 Amps no-load(400V) **109,30** A
 Enclosure **IP 55**
 Insulation Class **F (temp. rise B (80 K))**

Max. coolant temp. **40°C**
 Max. altitude **1.000** mtr, above sea level
 Comment **3 x PTC 150°C**
 Cable entries **2 x Ø 70 mm + 1 x M20x1,5 (ptc)**

Feature **Cast-iron motor**
 Weight **1890** kg
 Catalog no. **11038B60D**
 Warranty **12~18 months**

Efficiency class **N/A**
 Load data 100% 75% 50% 25%
 Efficiency **94,9 94,4 92,9 88,0** %
 Power factor **0,85 0,81 0,73 0,53**

Sound pressure level (1m) **73,0** dB(A)
 Resistance R20 (open) **0,0158** Ω
 Resistance R20 **Δ 0,0106** Ω

Full load torque **2064,86** Nm
 DOL Starting torque vs FL torque **1,82**
 DOL Pull up torque vs FL torque **1,44**
 DOL Pull out torque vs FL torque **3,43**
 Star-Delta Starting torque vs FL torque **0,57**
 Star-Delta Pull up torque vs FL torque **0,45**
 Star-Delta Pull out torque vs FL torque **1,07**
 DOL Starting current vs FL current **6,71**
 Star Delta Starting current vs FL current **2,10**
 Rotor Inertia **14,340** kgm²

Bearing DE **6322 - C3 or NU322**
 Bearing NDE **6320 - C3 (IM V1 7320B)**

WI	Change	date	sign.
Dutchi Motors B.V. P.O. Box 5390 NL-6802 EJ ARNHEM Tel : +31-(0)26 - 3541 600 Fax : +31-(0)26 - 3541 650		Description	date
		Drawing made by :	27-04-04
		dutchi.motors@dutchi.nl www.dutchi.com	