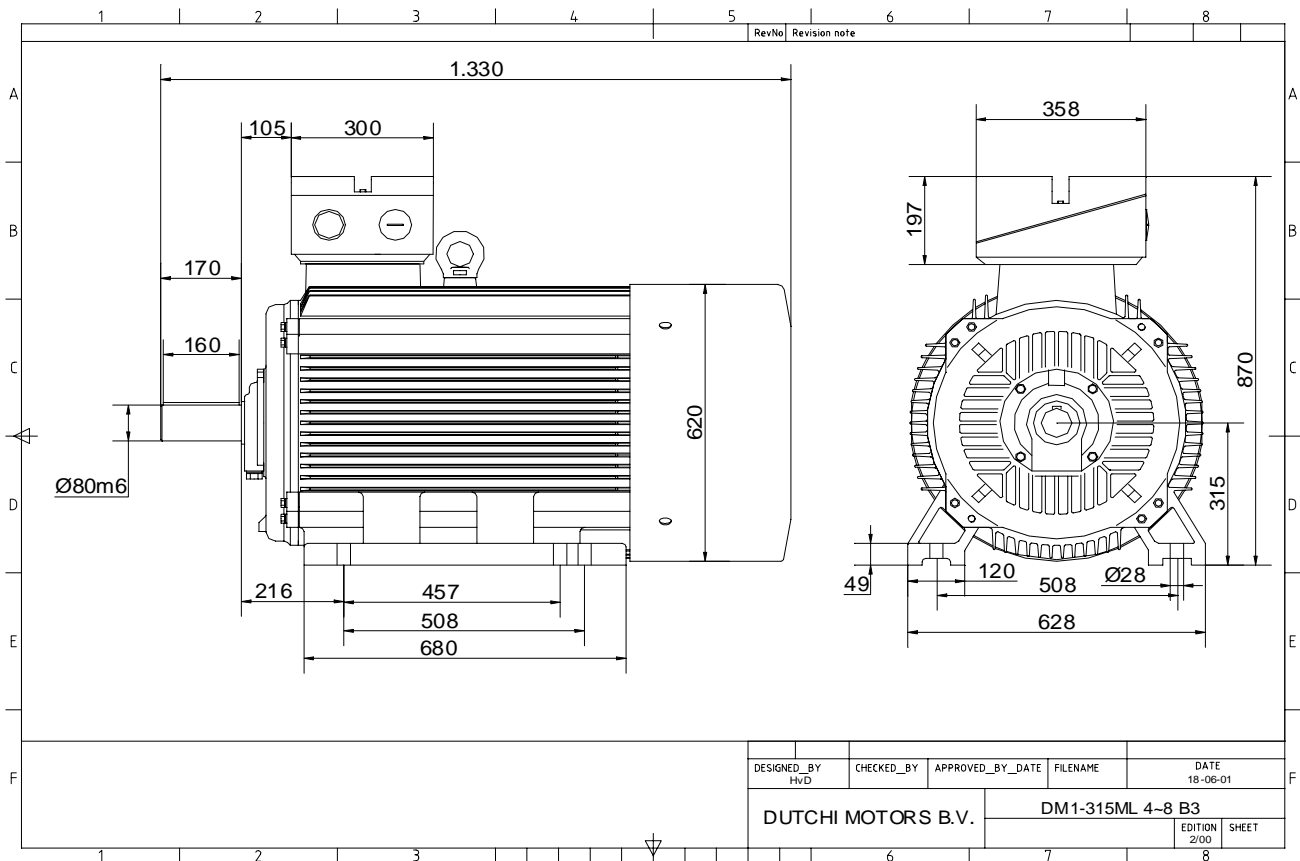


Power is our commodity, the world is our market !



Specification **IEC 60034-1**
 Manufacturer **Dutchi Motors B.V.**
 Motor type **DM1- 315 LX8**
 Rated power **110** kW **S1** duty
 Speed **740** r.p.m
 Voltage **400 / 690** V
 Frequency **50** Hz
 Connection **Δ / Y**
 Amps full load **205 / 119** A
 Amps no-load(400V) **73,00** A
 Enclosure **IP 55**
 Insulation Class **F (temp. rise B (80 K))**

Max. coolant temp. **40°C**
 Max. altitude **1.000** mtr, above sea level
 Comment **3 x PTC 150°C**
 Cable entries **2 x M63x1,5 + 1 x M20x1,5 (ptc)**

Feature **Cast-iron motor**
 Weight **1160** kg
 Catalog no. **11138B10D**
 Warranty **12~18 months**

Efficiency class **N/A**
 Load data 100% 75% 50% 25%
 Efficiency **93,8 93,5 92,1 87,1** %
 Power factor **0,82 0,79 0,71 0,52**

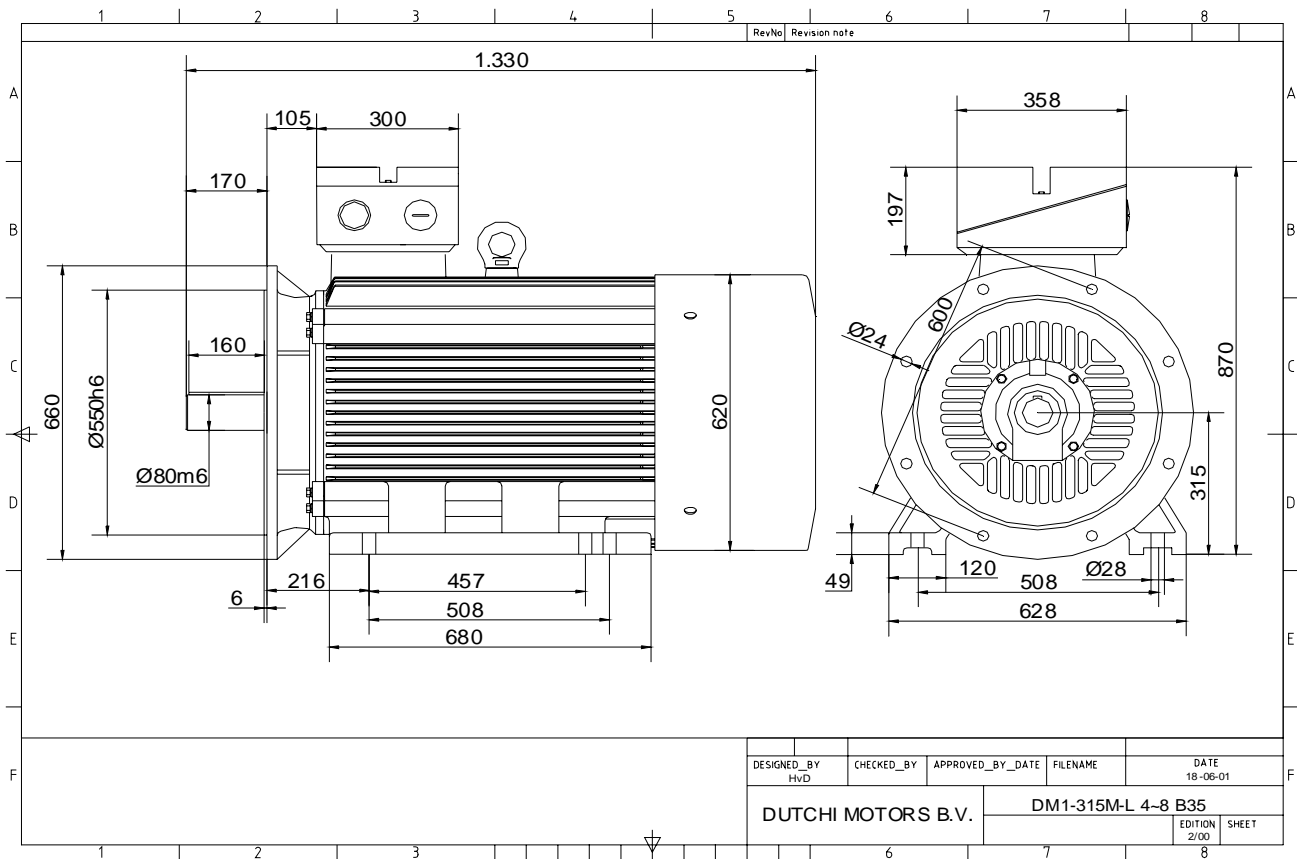
Sound pressure level (1m) **68,9** dB(A)
 Resistance R20 (open) **0,0346** Ω
 Resistance R20 **Δ 0,0231** Ω

Full load torque **1420** Nm
 DOL Starting torque vs FL torque **1,67**
 DOL Pull up torque vs FL torque **1,28**
 DOL Pull out torque vs FL torque **3,11**
 Star-Delta Starting torque vs FL torque **0,52**
 Star-Delta Pull up torque vs FL torque **0,40**
 Star-Delta Pull out torque vs FL torque **0,97**
 DOL Starting current vs FL current **6,35**
 Star Delta Starting current vs FL current **1,99**
 Rotor Inertia **6,5500** kgm²

Bearing DE **6319 - C3 or NU319**
 Bearing NDE **6319 - C3 (IM V1 7319B)**

WI	Change	date	sign.
Dutchi Motors B.V. P.O. Box 5390 NL-6802 EJ ARNHEM Tel : +31-(0)26 - 3541 600 Fax : +31-(0)26 - 3541 650		Discription Drawing made by :	date 27-04-04 sign. HvD
dutchi.motors@dutchi.nl www.dutchi.com			

Power is our commodity, the world is our market !



Specification **IEC 60034-1**
 Manufacturer **Dutchi Motors B.V.**
 Motor type **DM1- 315 LX8**
 Rated power **110** kW **S1** duty
 Speed **740** r.p.m
 Voltage **400 / 690** V
 Frequency **50** Hz
 Connection **Δ / Y**
 Amps full load **205 / 119** A
 Amps no-load(400V) **73,00** A
 Enclosure **IP 55**
 Insulation Class **F (temp. rise B (80 K))**

Max. coolant temp. **40°C**
 Max. altitude **1.000** mtr, above sea level
 Comment **3 x PTC 150°C**
 Cable entries **2 x M63x1,5 + 1 x M20x1,5 (ptc)**

Feature **Cast-iron motor**
 Weight **1160** kg
 Catalog no. **11538B10D**
 Warranty **12~18 months**

Efficiency class **N/A**
 Load data 100% 75% 50% 25%
 Efficiency **93,8 93,5 92,1 87,1** %
 Power factor **0,82 0,79 0,71 0,52**

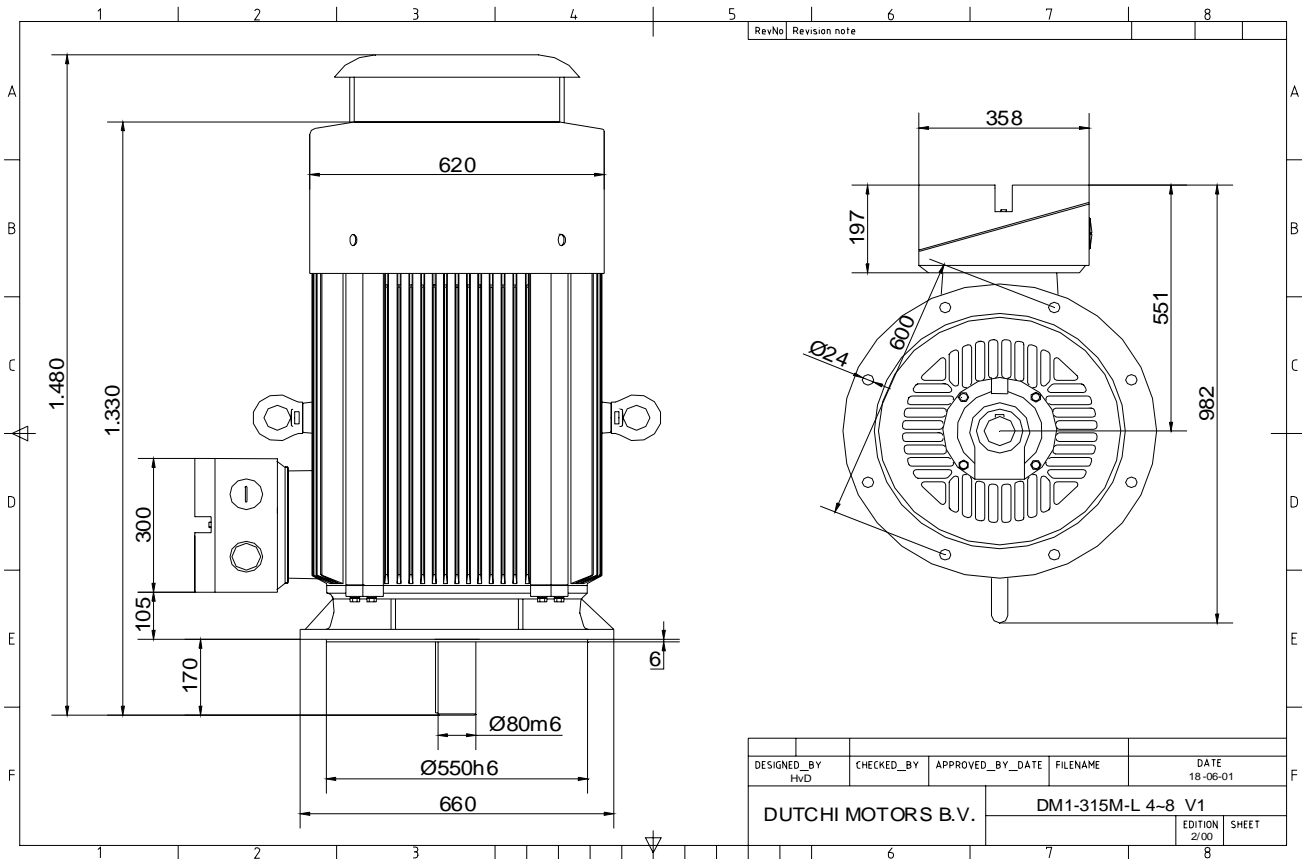
Sound pressure level (1m) **68,9** dB(A)
 Resistance R20 (open) **0,0346** Ω
 Resistance R20 **Δ 0,0231** Ω

Full load torque **1420** Nm
 DOL Starting torque vs FL torque **1,67**
 DOL Pull up torque vs FL torque **1,28**
 DOL Pull out torque vs FL torque **3,11**
 Star-Delta Starting torque vs FL torque **0,52**
 Star-Delta Pull up torque vs FL torque **0,40**
 Star-Delta Pull out torque vs FL torque **0,97**
 DOL Starting current vs FL current **6,35**
 Star Delta Starting current vs FL current **1,99**
 Rotor Inertia **6,5500** kgm²

Bearing DE **6319 - C3 or NU319**
 Bearing NDE **6319 - C3 (IM V1 7319B)**

WI	Change	date	sign.
Dutchi Motors B.V. P.O. Box 5390 NL-6802 EJ ARNHEM Tel : +31-(0)26 - 3541 600 Fax : +31-(0)26 - 3541 650		Description Drawing made by : 27-04-04	date 27-04-04 sign. HvD
		dutchi.motors@dutchi.nl www.dutchi.com	

Power is our commodity, the world is our market !



Specification **IEC 60034-1**
 Manufacturer **Dutchi Motors B.V.**
 Motor type **DM1- 315 LX8**
 Rated power **110** kW **S1** duty
 Speed **740** r.p.m
 Voltage **400 / 690** V
 Frequency **50** Hz
 Connection **Δ / Y**
 Amps full load **205 / 119** A
 Amps no-load(400V) **73,00** A
 Enclosure **IP 55**
 Insulation Class **F (temp. rise B (80 K))**

Max. coolant temp. **40°C**
 Max. altitude **1.000** mtr, above sea level
 Comment **3 x PTC 150°C**
 Cable entries **2 x M63x1,5 + 1 x M20x1,5 (ptc)**

Feature **Cast-iron motor**
 Weight **1160** kg
 Catalog no. **11038B10D**
 Warranty **12~18 months**

Efficiency class **N/A**
 Load data 100% 75% 50% 25%
 Efficiency **93,8 93,5 92,1 87,1** %
 Power factor **0,82 0,79 0,71 0,52**

Sound pressure level (1m) **68,9** dB(A)
 Resistance R20 (open) **0,0346** Ω
 Resistance R20 **Δ 0,0231** Ω

Full load torque **1420** Nm
 DOL Starting torque vs FL torque **1,67**
 DOL Pull up torque vs FL torque **1,28**
 DOL Pull out torque vs FL torque **3,11**
 Star-Delta Starting torque vs FL torque **0,52**
 Star-Delta Pull up torque vs FL torque **0,40**
 Star-Delta Pull out torque vs FL torque **0,97**
 DOL Starting current vs FL current **6,35**
 Star Delta Starting current vs FL current **1,99**
 Rotor Inertia **6,5500** kgm²

Bearing DE **6319 - C3 or NU319**
 Bearing NDE **6319 - C3 (IM V1 7319B)**

WI	Change	date	sign.
Dutchi Motors B.V.		Description	date
P.O. Box 5390		Drawing made by :	27-04-04
NL-6802 EJ ARNHEM			
Tel : +31-(0)26 - 3541 600		dutchi.motors@dutchi.nl	
Fax : +31-(0)26 - 3541 650		www.dutchi.com	