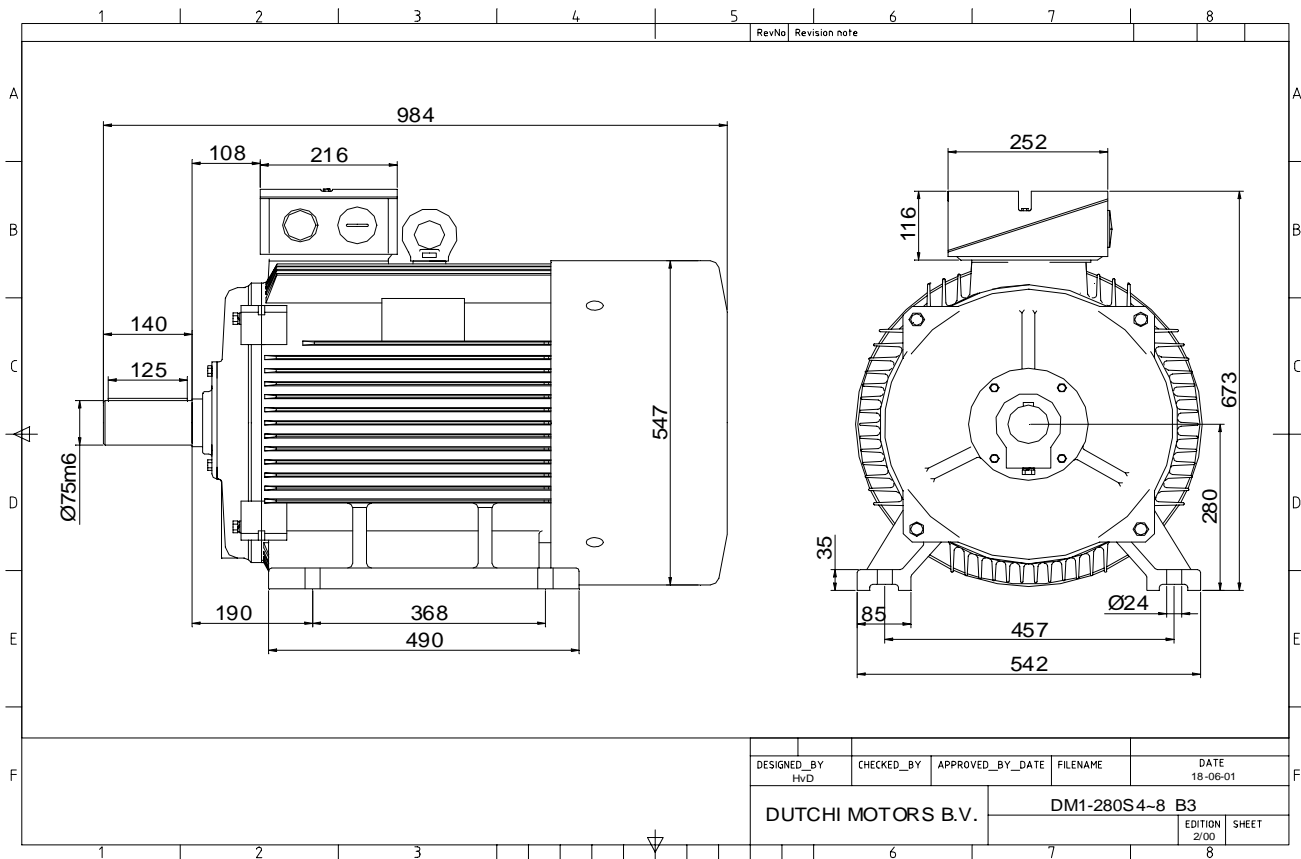


Power is our commodity, the world is our market !

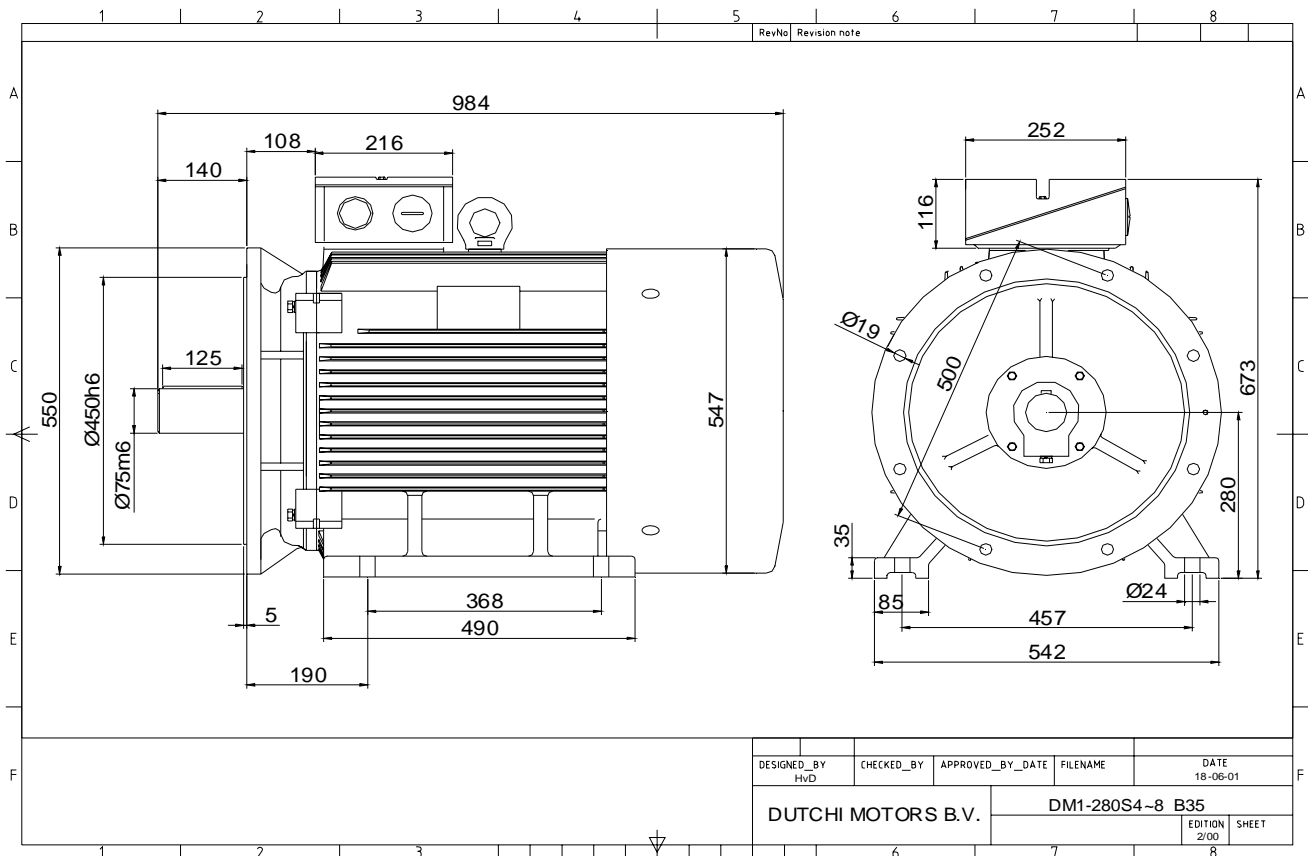


Specification	IEC 60034-1
Manufacturer	Dutchi Motors B.V.
Motor type	DM1- 280 S8
Rated power	37 kW S1 duty
Speed	735 r.p.m
Voltage	400 / 690 V
Frequency	50 Hz
Connection	Δ / Y
Amps full load	73,0 / 42,1 A
Amps no-load(400V)	30,60 A
Enclosure	IP 55
Insulation Class	F (temp. rise B (80 K))
Max. coolant temp.	40°C
Max. altitude	1.000 mtr, above sea level
Comment	3 x PTC 150°C
Cable entries	2 x M63x1,5 + 1 x M20x1,5 (ptc)
Feature	Cast-iron motor
Weight	475 kg
Catalog no.	11138A37D
Warranty	12~18 months

Efficiency class	N/A			
Load data	100%	75%	50%	25%
Efficiency	90,3	90,2	88,5	82,2 %
Power factor	0,81	0,77	0,67	0,48
Sound pressure level (1m)				64,0 dB(A)
Resistance R20 (open)				0,224 Ω
Resistance R20	Δ			0,150 Ω
Full load torque				481 Nm
DOL Starting torque vs FL torque				2,14
DOL Pull up torque vs FL torque				1,50
DOL Pull out torque vs FL torque				2,82
Star-Delta Starting torque vs FL torque				0,67
Star-Delta Pull up torque vs FL torque				0,47
Star-Delta Pull out torque vs FL torque				0,88
DOL Starting current vs FL current				5,66
Star Delta Starting current vs FL current				1,77
Rotor Inertia				1,3810 kgm ²
Bearing DE				6317 - C3 or NU317
Bearing NDE				6317 - C3

WI	Change	date	sign.
Dutchi Motors B.V. P.O. Box 5390 NL-6802 EJ ARNHEM Tel : +31-(0)26 - 3541 600 Fax : +31-(0)26 - 3541 650		Description	date
		Drawing made by :	27-04-04
		dutchi.motors@dutchi.nl www.dutchi.com	

Power is our commodity, the world is our market !



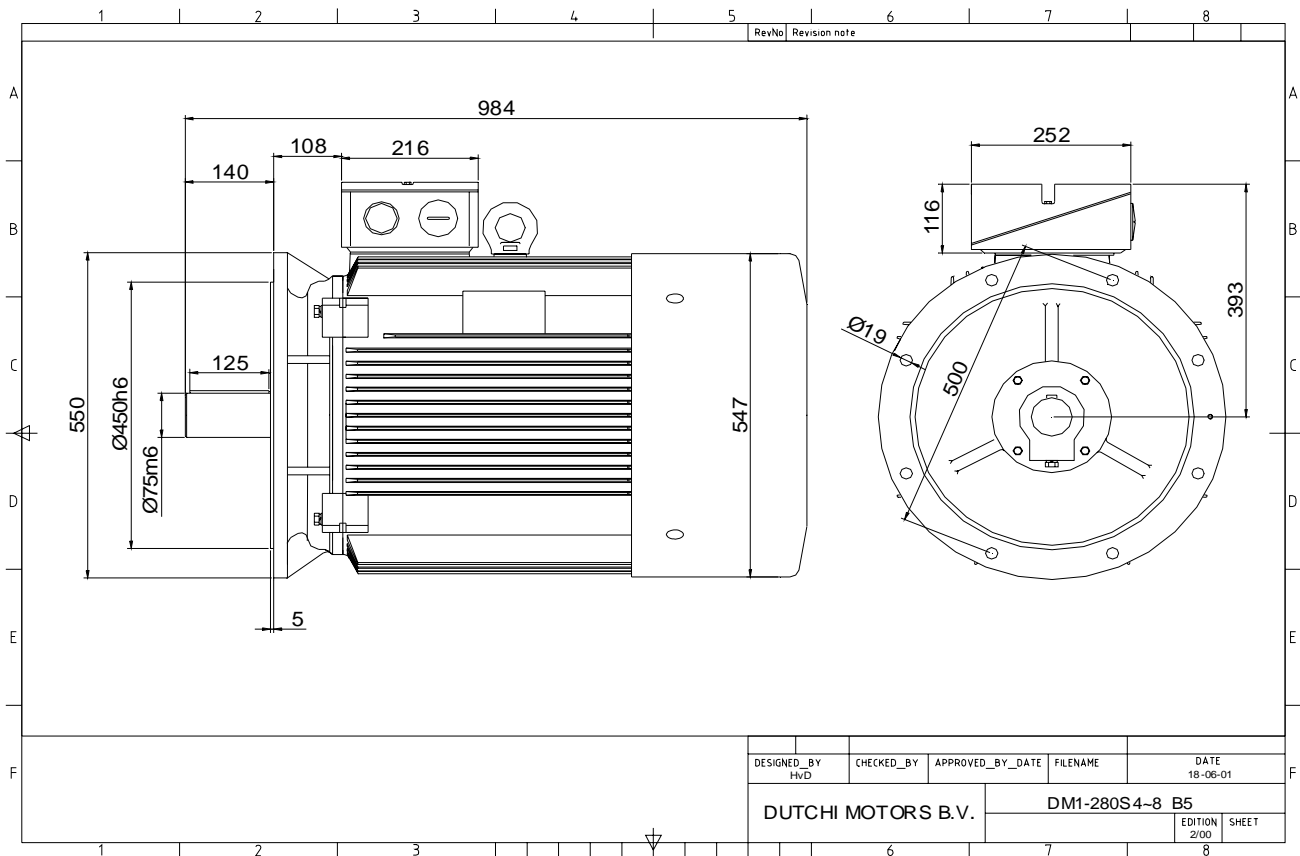
DESIGNED_BY HvD	CHECKED_BY	APPROVED_BY_DATE	FILENAME	DATE 18-06-01
DUTCHI MOTORS B.V.			DM1-280S4-8 B35	EDITION 2/00
				SHEET 8

Specification	IEC 60034-1
Manufacturer	Dutchi Motors B.V.
Motor type	DM1- 280 S8
Rated power	37 kW S1 duty
Speed	735 r.p.m
Voltage	400 / 690 V
Frequency	50 Hz
Connection	Δ / Y
Amps full load	73,0 / 42,1 A
Amps no-load(400V)	30,60 A
Enclosure	IP 55
Insulation Class	F (temp. rise B (80 K))
Max. coolant temp.	40°C
Max. altitude	1.000 mtr, above sea level
Comment	3 x PTC 150°C
Cable entries	2 x M63x1,5 + 1 x M20x1,5 (ptc)
Feature	Cast-iron motor
Weight	475 kg
Catalog no.	11538A37D
Warranty	12~18 months

Efficiency class	N/A			
Load data	100%	75%	50%	25%
Efficiency	90,3	90,2	88,5	82,2 %
Power factor	0,81	0,77	0,67	0,48
Sound pressure level (1m)				64,0 dB(A)
Resistance R20 (open)				0,224 Ω
Resistance R20	Δ			0,150 Ω
Full load torque				481 Nm
DOL Starting torque vs FL torque				2,14
DOL Pull up torque vs FL torque				1,50
DOL Pull out torque vs FL torque				2,82
Star-Delta Starting torque vs FL torque				0,67
Star-Delta Pull up torque vs FL torque				0,47
Star-Delta Pull out torque vs FL torque				0,88
DOL Starting current vs FL current				5,66
Star Delta Starting current vs FL current				1,77
Rotor Inertia				1,3810 kgm ²
Bearing DE				6317 - C3 or NU317
Bearing NDE				6317 - C3

WI	Change	date	sign.
Dutchi Motors B.V.		Description	date
P.O. Box 5390		Drawing made by :	27-04-04
NL-6802 EJ ARNHEM			
Tel : +31-(0)26 - 3541 600		dutchi.motors@dutchi.nl	
Fax : +31-(0)26 - 3541 650		www.dutchi.com	

Power is our commodity, the world is our market !

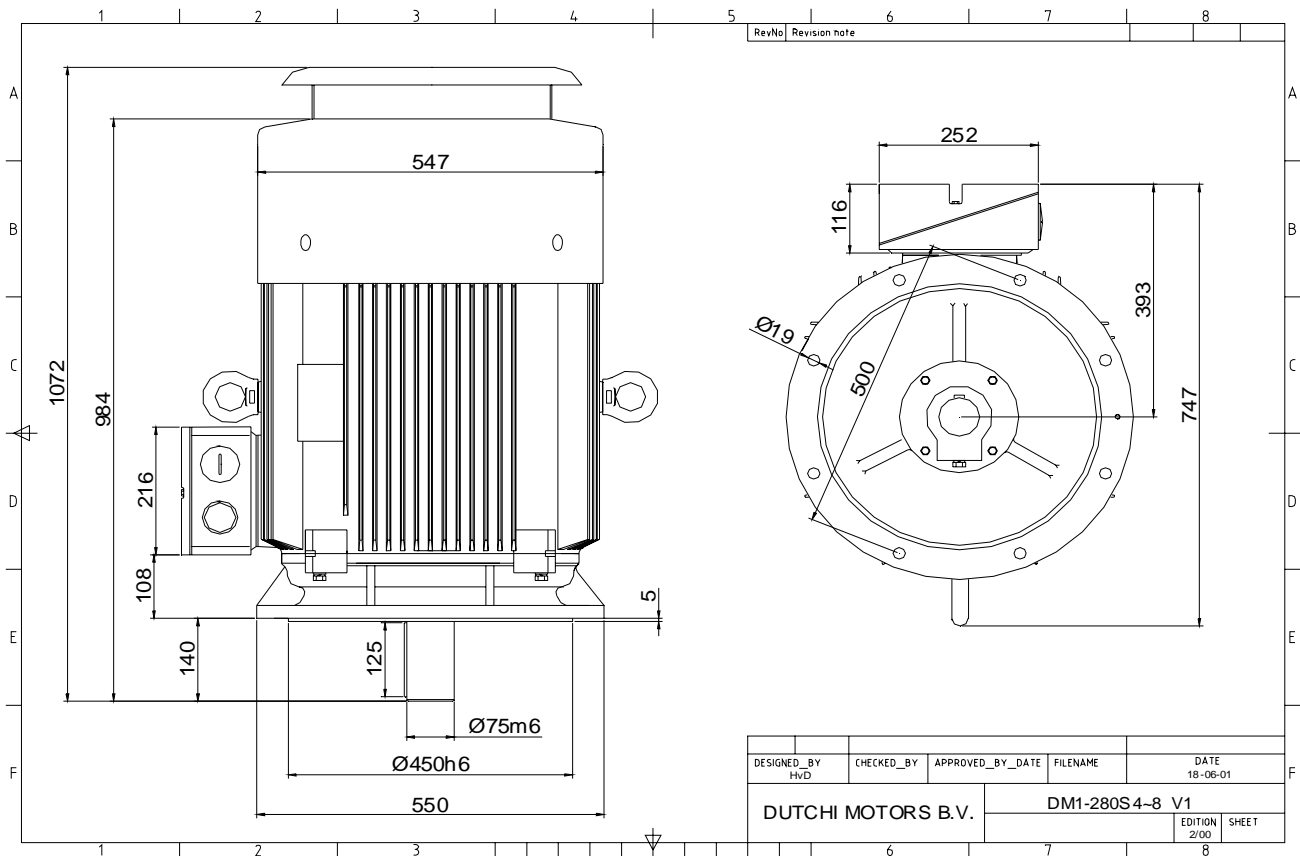


Specification	IEC 60034-1
Manufacturer	Dutchi Motors B.V.
Motor type	DM1- 280 S8
Rated power	37 kW S1 duty
Speed	735 r.p.m
Voltage	400 / 690 V
Frequency	50 Hz
Connection	Δ / Y
Amps full load	73,0 / 42,1 A
Amps no-load(400V)	30,60 A
Enclosure	IP 55
Insulation Class	F (temp. rise B (80 K))
Max. coolant temp.	40°C
Max. altitude	1.000 mtr, above sea level
Comment	3 x PTC 150°C
Cable entries	2 x M63x1,5 + 1 x M20x1,5 (ptc)
Feature	Cast-iron motor
Weight	475 kg
Catalog no.	11238A37D
Warranty	12~18 months

Efficiency class	N/A			
Load data	100%	75%	50%	25%
Efficiency	90,3	90,2	88,5	82,2 %
Power factor	0,81	0,77	0,67	0,48
Sound pressure level (1m)				64,0 dB(A)
Resistance R20 (open)				0,224 Ω
Resistance R20	Δ			0,150 Ω
Full load torque				481 Nm
DOL Starting torque vs FL torque				2,14
DOL Pull up torque vs FL torque				1,50
DOL Pull out torque vs FL torque				2,82
Star-Delta Starting torque vs FL torque				0,67
Star-Delta Pull up torque vs FL torque				0,47
Star-Delta Pull out torque vs FL torque				0,88
DOL Starting current vs FL current				5,66
Star Delta Starting current vs FL current				1,77
Rotor Inertia				1,3810 kgm2
Bearing DE				6317 - C3 or NU317
Bearing NDE				6317 - C3

WI	Change	date	sign.
Dutchi Motors B.V. P.O. Box 5390 NL-6802 EJ ARNHEM Tel : +31-(0)26 - 3541 600 Fax : +31-(0)26 - 3541 650		Description	date
		Drawing made by :	27-04-04
		dutchi.motors@dutchi.nl www.dutchi.com	

Power is our commodity, the world is our market !



DESIGNED_BY	CHECKED_BY	APPROVED_BY_DATE	FILENAME	DATE
HvD				18-06-01
DUTCHI MOTORS B.V.			DM1-280S4-8 V1	EDITION 2/00 SHEET

Specification	IEC 60034-1
Manufacturer	Dutchi Motors B.V.
Motor type	DM1- 280 S8
Rated power	37 kW S1 duty
Speed	735 r.p.m
Voltage	400 / 690 V
Frequency	50 Hz
Connection	Δ / Y
Amps full load	73,0 / 42,1 A
Amps no-load(400V)	30,60 A
Enclosure	IP 55
Insulation Class	F (temp. rise B (80 K))
Max. coolant temp.	40°C
Max. altitude	1.000 mtr, above sea level
Comment	3 x PTC 150°C
Cable entries	2 x M63x1,5 + 1 x M20x1,5 (ptc)
Feature	Cast-iron motor
Weight	475 kg
Catalog no.	11038A37D
Warranty	12~18 months

Efficiency class	N/A			
Load data	100%	75%	50%	25%
Efficiency	90,3	90,2	88,5	82,2 %
Power factor	0,81	0,77	0,67	0,48
Sound pressure level (1m)	64,0			dB(A)
Resistance R20 (open)	0,224			Ω
Resistance R20	0,150			Ω
Full load torque	481			Nm
DOL Starting torque vs FL torque	2,14			
DOL Pull up torque vs FL torque	1,50			
DOL Pull out torque vs FL torque	2,82			
Star-Delta Starting torque vs FL torque	0,67			
Star-Delta Pull up torque vs FL torque	0,47			
Star-Delta Pull out torque vs FL torque	0,88			
DOL Starting current vs FL current	5,66			
Star Delta Starting current vs FL current	1,77			
Rotor Inertia	1,3810			kgm ²
Bearing DE	6317 - C3 or NU317			
Bearing NDE	6317 - C3			

WI	Change	date	sign.
Dutchi Motors B.V. P.O. Box 5390 NL-6802 EJ ARNHEM Tel : +31-(0)26 - 3541 600 Fax : +31-(0)26 - 3541 650		Discription Drawing made by : 27-04-04	date sign. HvD
dutchi.motors@dutchi.nl www.dutchi.com			