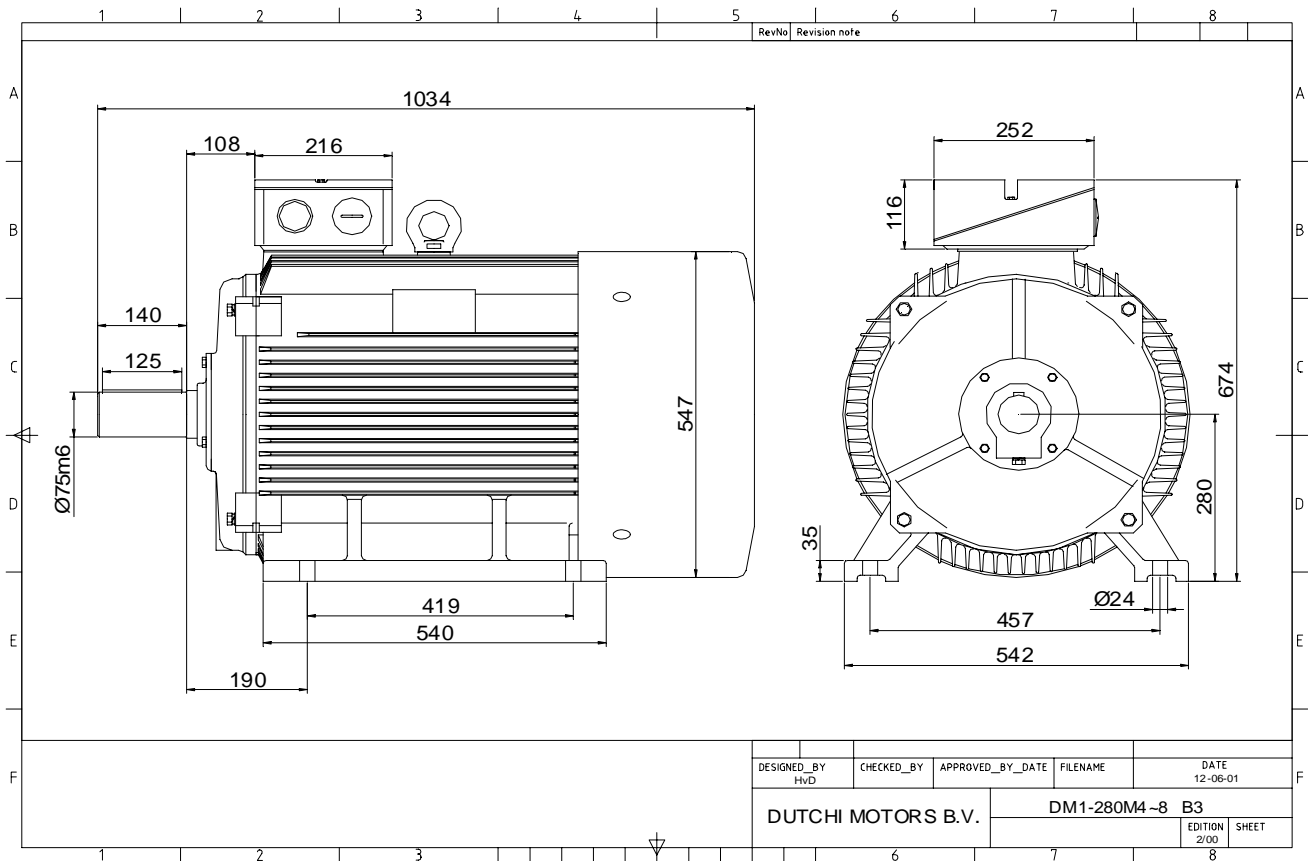


Power is our commodity, the world is our market !



Specification **IEC 60034-1**
 Manufacturer **Dutchi Motors B.V.**
 Motor type **DM1- 280 M8**
 Rated power **45** kW **S1** duty
 Speed **738** r.p.m
 Voltage **400** / **690** V
 Frequency **50** Hz
 Connection **Δ** / **Y**
 Amps full load **89** / **51,5** A
 Amps no-load(400V) **38,60** A
 Enclosure **IP 55**
 Insulation Class **F (temp. rise B (80 K))**

Max. coolant temp. **40°C**
 Max. altitude **1.000** mtr, above sea level
 Comment **3 x PTC 150°C**
 Cable entries **2 x M63x1,5 + 1 x M20x1,5 (ptc)**

Feature **Cast-iron motor**
 Weight **555** kg
 Catalog no. **11138A45D**
 Warranty **12~18 months**

Efficiency class **N/A**
 Load data 100% 75% 50% 25%
 Efficiency **91,7 91,9 90,8 85,7** %
 Power factor **0,79 0,75 0,65 0,44**

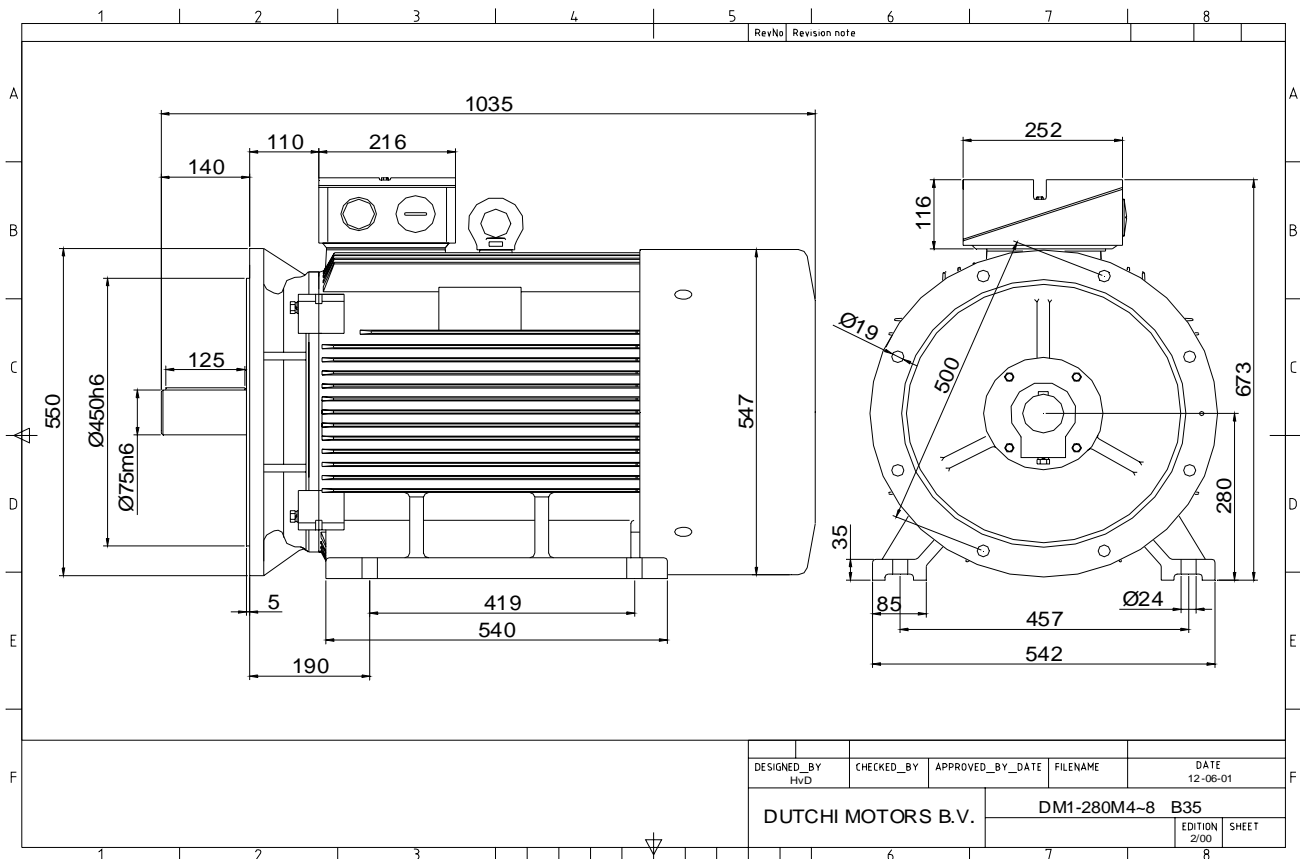
Sound pressure level (1m) **62,7** dB(A)
 Resistance R20 (open) **0,1672** Ω
 Resistance R20 **Δ 0,1115** Ω

Full load torque **582** Nm
 DOL Starting torque vs FL torque **2,10**
 DOL Pull up torque vs FL torque **1,51**
 DOL Pull out torque vs FL torque **2,89**
 Star-Delta Starting torque vs FL torque **0,66**
 Star-Delta Pull up torque vs FL torque **0,47**
 Star-Delta Pull out torque vs FL torque **0,90**
 DOL Starting current vs FL current **5,84**
 Star Delta Starting current vs FL current **1,83**
 Rotor Inertia **1,7210** kgm²

Bearing DE **6317 - C3 or NU317**
 Bearing NDE **6317 - C3**

WI	Change	date	sign.
Dutchi Motors B.V.		Description	date
P.O. Box 5390		Drawing made by :	27-04-04
NL-6802 EJ ARNHEM			
Tel : +31-(0)26 - 3541 600		dutchi.motors@dutchi.nl	
Fax : +31-(0)26 - 3541 650		www.dutchi.com	

Power is our commodity, the world is our market !



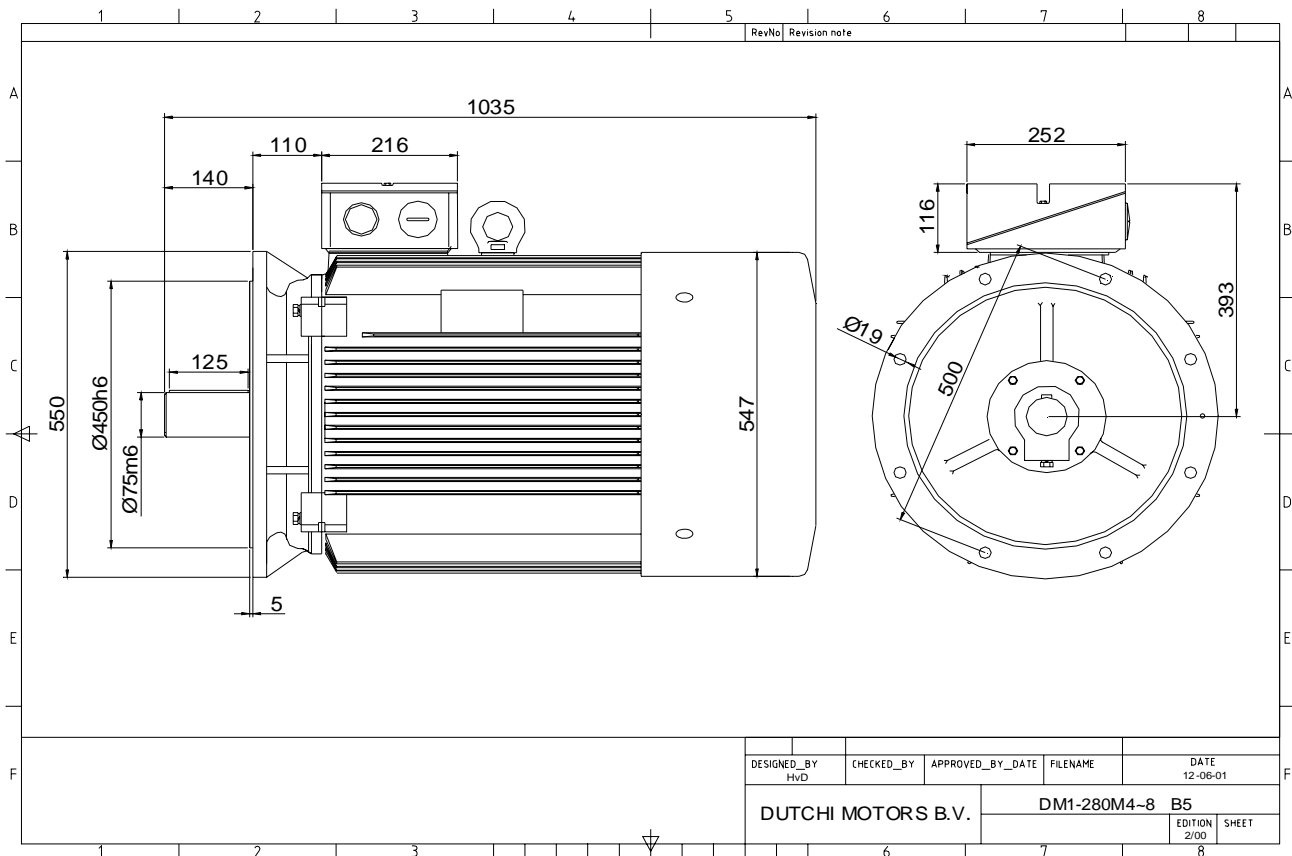
DESIGNED_BY HvD	CHECKED_BY	APPROVED_BY_DATE	FILENAME	DATE 12-06-01
DUTCHI MOTORS B.V.			DM1-280M4-8	B35
			EDITION 2/00	SHEET

Specification	IEC 60034-1
Manufacturer	Dutchi Motors B.V.
Motor type	DM1- 280 M8
Rated power	45 kW S1 duty
Speed	738 r.p.m
Voltage	400 / 690 V
Frequency	50 Hz
Connection	Δ / Y
Amps full load	89 / 51,5 A
Amps no-load(400V)	38,60 A
Enclosure	IP 55
Insulation Class	F (temp. rise B (80 K))
Max. coolant temp.	40°C
Max. altitude	1.000 mtr, above sea level
Comment	3 x PTC 150°C
Cable entries	2 x M63x1,5 + 1 x M20x1,5 (ptc)
Feature	Cast-iron motor
Weight	555 kg
Catalog no.	11538A45D
Warranty	12~18 months

Efficiency class	N/A			
Load data	100%	75%	50%	25%
Efficiency	91,7	91,9	90,8	85,7 %
Power factor	0,79	0,75	0,65	0,44
Sound pressure level (1m)				62,7 dB(A)
Resistance R20 (open)				0,1672 Ω
Resistance R20	Δ			0,1115 Ω
Full load torque				582 Nm
DOL Starting torque vs FL torque				2,10
DOL Pull up torque vs FL torque				1,51
DOL Pull out torque vs FL torque				2,89
Star-Delta Starting torque vs FL torque				0,66
Star-Delta Pull up torque vs FL torque				0,47
Star-Delta Pull out torque vs FL torque				0,90
DOL Starting current vs FL current				5,84
Star Delta Starting current vs FL current				1,83
Rotor Inertia				1,7210 kgm2
Bearing DE				6317 - C3 or NU317
Bearing NDE				6317 - C3

WI	Change	date	sign.
Dutchi Motors B.V. P.O. Box 5390 NL-6802 EJ ARNHEM Tel : +31-(0)26 - 3541 600 Fax : +31-(0)26 - 3541 650		Discription Drawing made by :	date 27-04-04
		sign.	HvD
		dutchi.motors@dutchi.nl www.dutchi.com	

Power is our commodity, the world is our market !

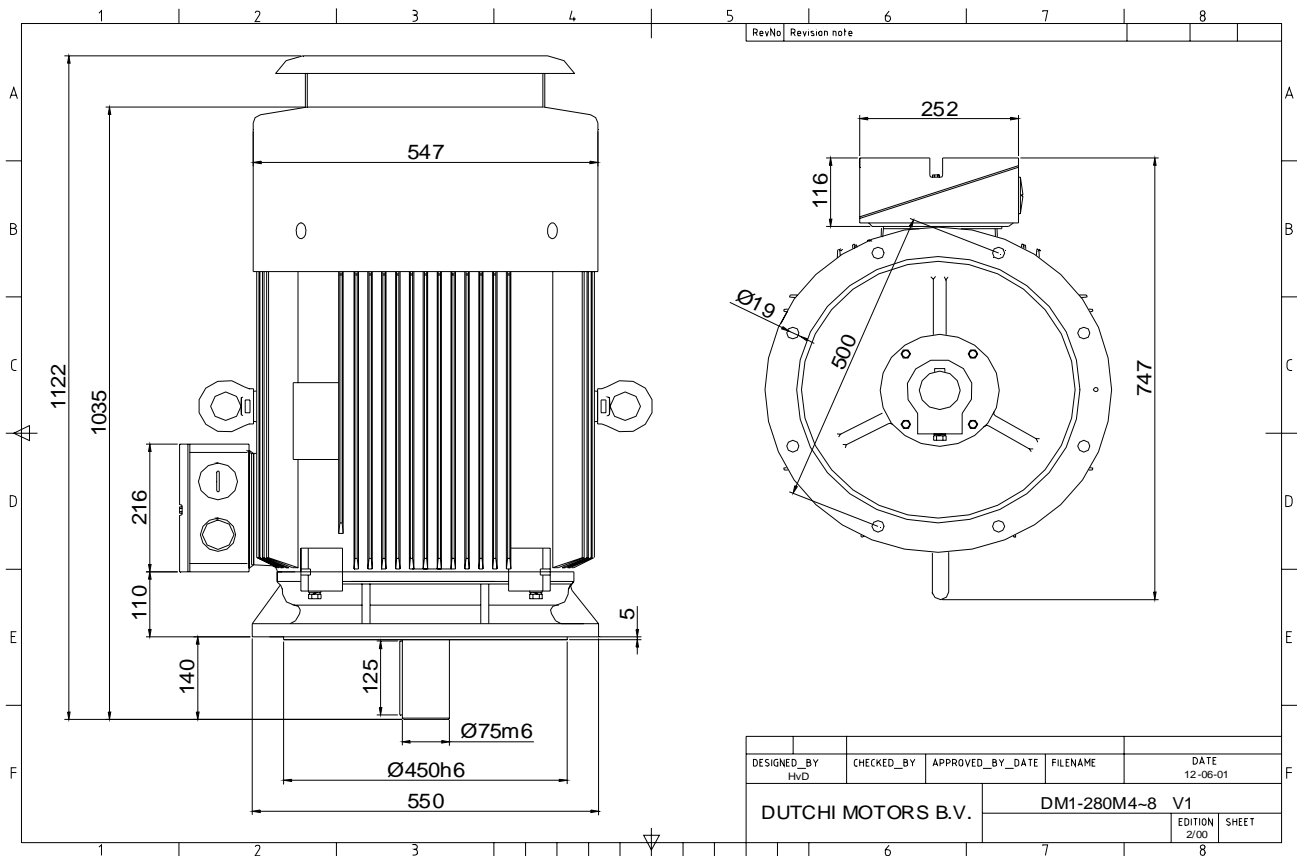


Specification	IEC 60034-1
Manufacturer	Dutchi Motors B.V.
Motor type	DM1- 280 M8
Rated power	45 kW S1 duty
Speed	738 r.p.m
Voltage	400 / 690 V
Frequency	50 Hz
Connection	Δ / Y
Amps full load	89 / 51,5 A
Amps no-load(400V)	38,60 A
Enclosure	IP 55
Insulation Class	F (temp. rise B (80 K))
Max. coolant temp.	40°C
Max. altitude	1.000 mtr, above sea level
Comment	3 x PTC 150°C
Cable entries	2 x M63x1,5 + 1 x M20x1,5 (ptc)
Feature	Cast-iron motor
Weight	555 kg
Catalog no.	11238A45D
Warranty	12~18 months

Efficiency class	N/A			
Load data	100%	75%	50%	25%
Efficiency	91,7	91,9	90,8	85,7 %
Power factor	0,79	0,75	0,65	0,44
Sound pressure level (1m)				62,7 dB(A)
Resistance R20 (open)				0,1672 Ω
Resistance R20	Δ			0,1115 Ω
Full load torque				582 Nm
DOL Starting torque vs FL torque				2,10
DOL Pull up torque vs FL torque				1,51
DOL Pull out torque vs FL torque				2,89
Star-Delta Starting torque vs FL torque				0,66
Star-Delta Pull up torque vs FL torque				0,47
Star-Delta Pull out torque vs FL torque				0,90
DOL Starting current vs FL current				5,84
Star Delta Starting current vs FL current				1,83
Rotor Inertia				1,7210 kgm ²
Bearing DE	6317 - C3 or NU317			
Bearing NDE	6317 - C3			

WI	Change	date	sign.
Dutchi Motors B.V. P.O. Box 5390 NL-6802 EJ ARNHEM Tel : +31-(0)26 - 3541 600 Fax : +31-(0)26 - 3541 650		Description	date
		Drawing made by :	27-04-04
		dutchi.motors@dutchi.nl www.dutchi.com	

Power is our commodity, the world is our market !



Specification	IEC 60034-1
Manufacturer	Dutchi Motors B.V.
Motor type	DM1- 280 M8
Rated power	45 kW S1 duty
Speed	738 r.p.m
Voltage	400 / 690 V
Frequency	50 Hz
Connection	Δ / Y
Amps full load	89 / 51,5 A
Amps no-load(400V)	38,60 A
Enclosure	IP 55
Insulation Class	F (temp. rise B (80 K))
Max. coolant temp.	40°C
Max. altitude	1.000 mtr, above sea level
Comment	3 x PTC 150°C
Cable entries	2 x M63x1,5 + 1 x M20x1,5 (ptc)
Feature	Cast-iron motor
Weight	555 kg
Catalog no.	11038A45D
Warranty	12~18 months

Efficiency class	N/A			
Load data	100%	75%	50%	25%
Efficiency	91,7	91,9	90,8	85,7 %
Power factor	0,79	0,75	0,65	0,44
Sound pressure level (1m)				62,7 dB(A)
Resistance R20 (open)				0,1672 Ω
Resistance R20	Δ			0,1115 Ω
Full load torque				582 Nm
DOL Starting torque vs FL torque				2,10
DOL Pull up torque vs FL torque				1,51
DOL Pull out torque vs FL torque				2,89
Star-Delta Starting torque vs FL torque				0,66
Star-Delta Pull up torque vs FL torque				0,47
Star-Delta Pull out torque vs FL torque				0,90
DOL Starting current vs FL current				5,84
Star Delta Starting current vs FL current				1,83
Rotor Inertia				1,7210 kgm ²
Bearing DE				6317 - C3 or NU317
Bearing NDE				6317 - C3

WI	Change	date	sign.
Dutchi Motors B.V. P.O. Box 5390 NL-6802 EJ ARNHEM Tel : +31-(0)26 - 3541 600 Fax : +31-(0)26 - 3541 650		Discription Drawing made by :	date 27-04-04 sign. HvD
		dutchi.motors@dutchi.nl www.dutchi.com	