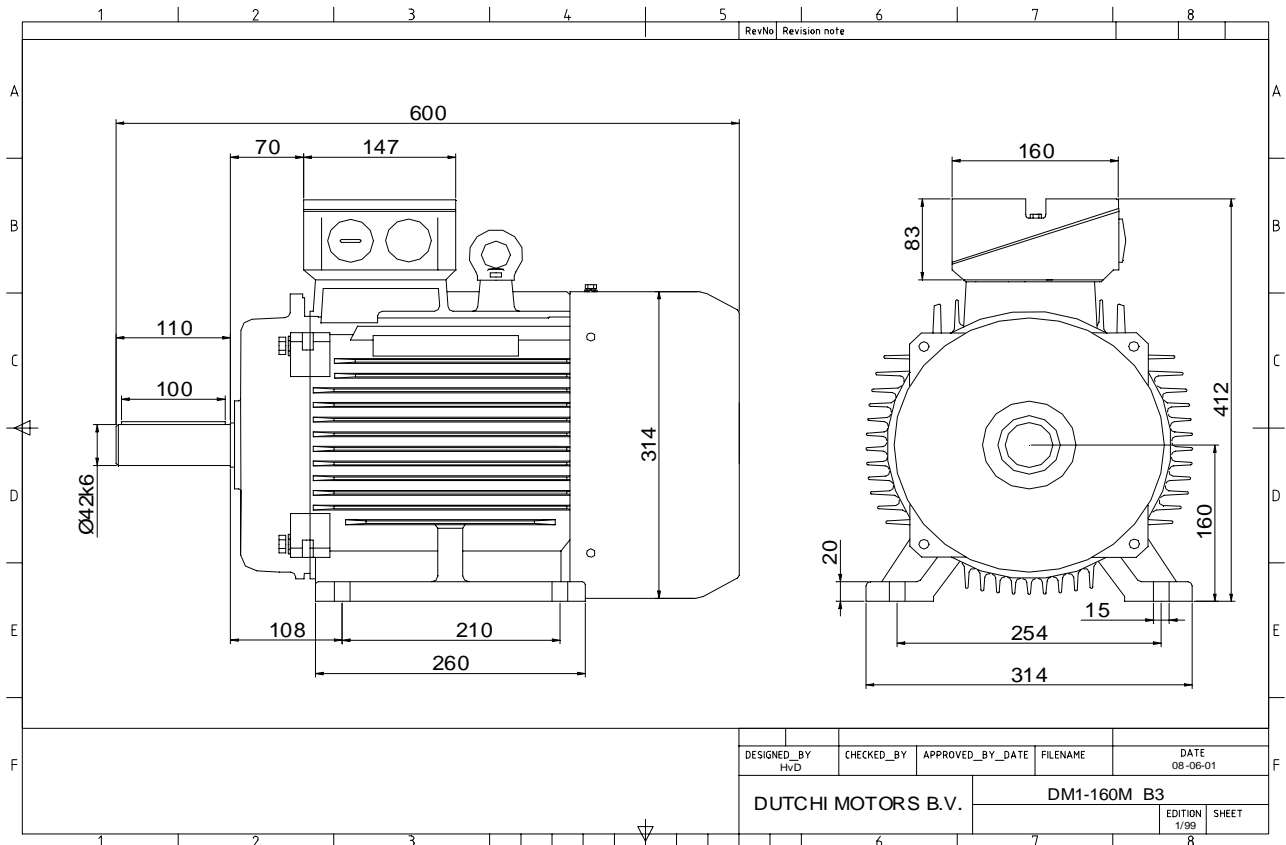


Power is our commodity, the world is our market !

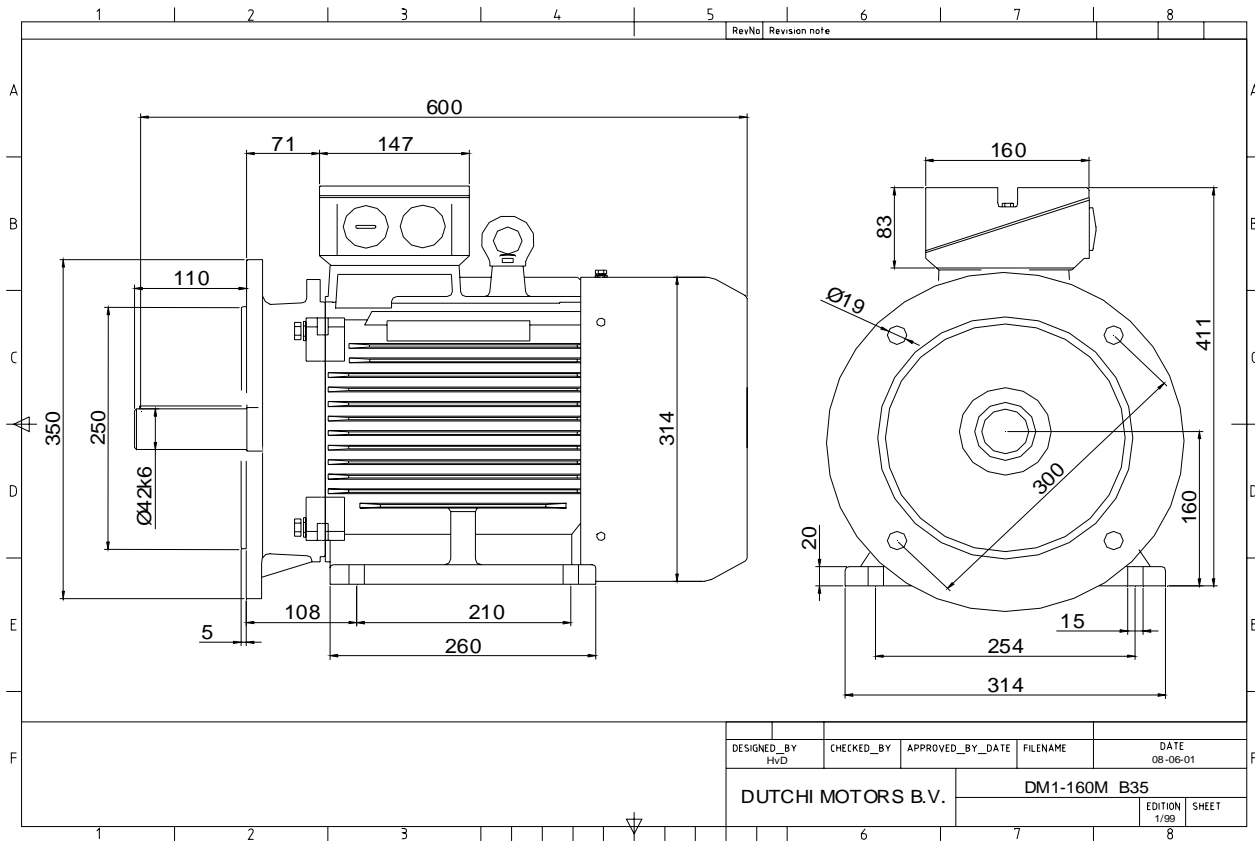


Specification	IEC 60034-1
Manufacturer	Dutchi Motors B.V.
Motor type	DM1- 160 MX8
Rated power	5,5 kW S1 duty
Speed	720 r.p.m
Voltage	400 / 690 V
Frequency	50 Hz
Connection	Δ / Y
Amps full load	12,39 / 7,15 A
Amps no-load(400V)	7,40 A
Enclosure	IP 55
Insulation Class	F (temp. rise B (80 K))
Max. coolant temp.	40°C
Max. altitude	1.000 mtr, above sea level
Comment	3 x PTC 150°C
Cable entries	2 x M40x1,5 + 1 x M20x1,5 (ptc)
Feature	Cast-iron motor
Weight	106 kg
Catalog no.	11138550D
Warranty	12~18 months

Efficiency class	N/A			
Load data	100%	75%	50%	25%
Efficiency	84,6	84,8	82,6	73,4 %
Power factor	0,76	0,68	0,55	0,34
Sound pressure level (1m)				58,1 dB(A)
Resistance R20 (open)				2,399 Ω
Resistance R20	Δ			1,599 Ω
Full load torque				72,95 Nm
DOL Starting torque vs FL torque				2,08
DOL Pull up torque vs FL torque				1,56
DOL Pull out torque vs FL torque				3,18
Star-Delta Starting torque vs FL torque				0,65
Star-Delta Pull up torque vs FL torque				0,49
Star-Delta Pull out torque vs FL torque				0,99
DOL Starting current vs FL current				5,97
Star Delta Starting current vs FL current				1,86
Rotor Inertia				0,0821 kgm ²
Bearing DE				6309 - ZZ C3
Bearing NDE				6309 - ZZ C3

WI	Change	date	sign.
Dutchi Motors B.V. P.O. Box 5390 NL-6802 EJ ARNHEM Tel : +31-(0)26 - 3541 600 Fax : +31-(0)26 - 3541 650		Description	date
		Drawing made by :	27-04-04
		dutchi.motors@dutchi.nl www.dutchi.com	

Power is our commodity, the world is our market !



Specification **IEC 60034-1**
 Manufacturer **Dutchi Motors B.V.**
 Motor type **DM1- 160 MX8**
 Rated power **5,5** kW **S1** duty
 Speed **720** r.p.m
 Voltage **400 / 690** V
 Frequency **50** Hz
 Connection **Δ / Y**
 Amps full load **12,39 / 7,15** A
 Amps no-load(400V) **7,40** A
 Enclosure **IP 55**
 Insulation Class **F (temp. rise B (80 K))**

Max. coolant temp. **40°C**
 Max. altitude **1.000** mtr, above sea level
 Comment **3 x PTC 150°C**
 Cable entries **2 x M40x1,5 + 1 x M20x1,5 (ptc)**

Feature **Cast-iron motor**
 Weight **106** kg
 Catalog no. **11538550D**
 Warranty **12~18 months**

Efficiency class **N/A**
 Load data 100% 75% 50% 25%
 Efficiency **84,6 84,8 82,6 73,4** %
 Power factor **0,76 0,68 0,55 0,34**

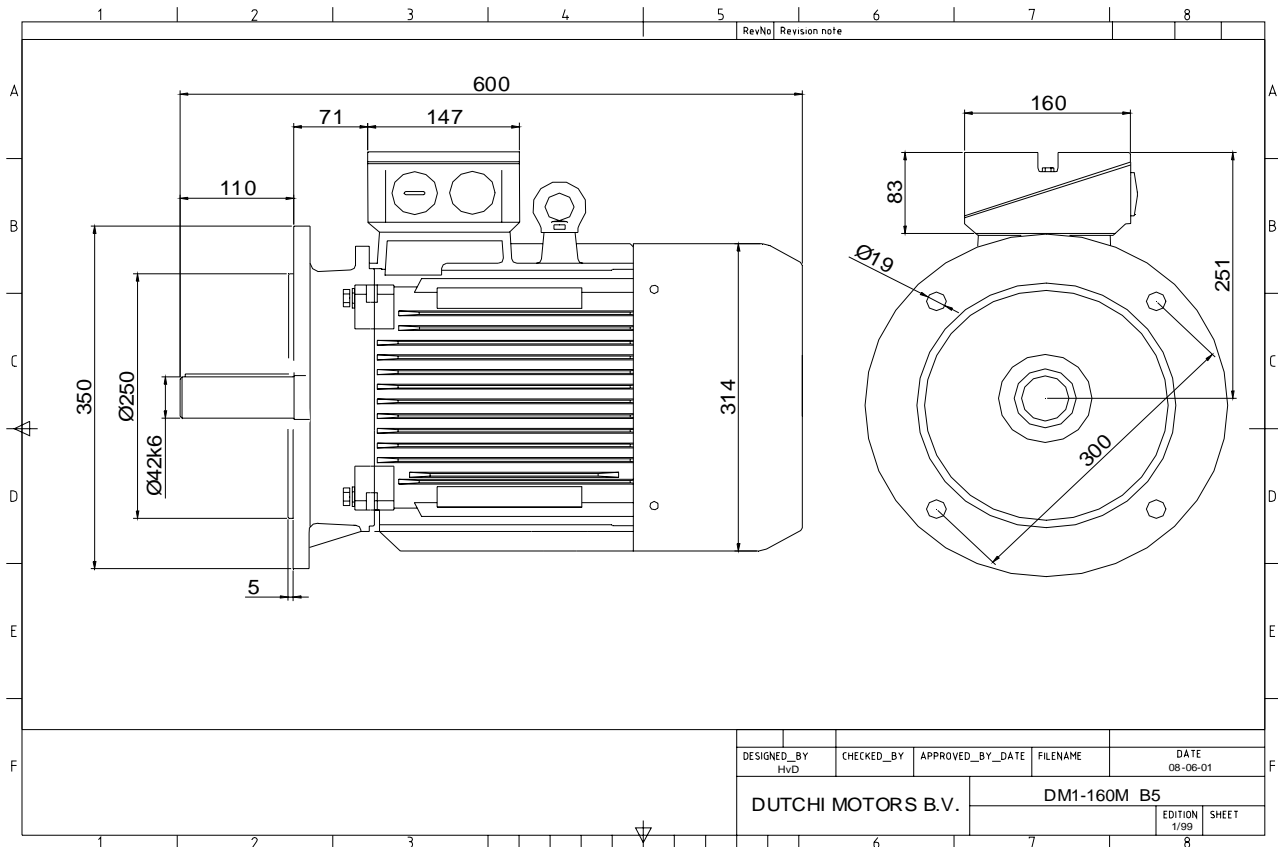
Sound pressure level (1m) **58,1** dB(A)
 Resistance R20 (open) **2,399** Ω
 Resistance R20 **Δ 1,599** Ω

Full load torque **72,95** Nm
 DOL Starting torque vs FL torque **2,08**
 DOL Pull up torque vs FL torque **1,56**
 DOL Pull out torque vs FL torque **3,18**
 Star-Delta Starting torque vs FL torque **0,65**
 Star-Delta Pull up torque vs FL torque **0,49**
 Star-Delta Pull out torque vs FL torque **0,99**
 DOL Starting current vs FL current **5,97**
 Star Delta Starting current vs FL current **1,86**
 Rotor Inertia **0,0821** kgm²

Bearing DE **6309 - ZZ C3**
 Bearing NDE **6309 - ZZ C3**

WI	Change	date	sign.
Dutchi Motors B.V. P.O. Box 5390 NL-6802 EJ ARNHEM Tel : +31-(0)26 - 3541 600 Fax : +31-(0)26 - 3541 650		Description Drawing made by : 27-04-04	date 27-04-04
		sign. HvD	
		dutchi.motors@dutchi.nl www.dutchi.com	

Power is our commodity, the world is our market !

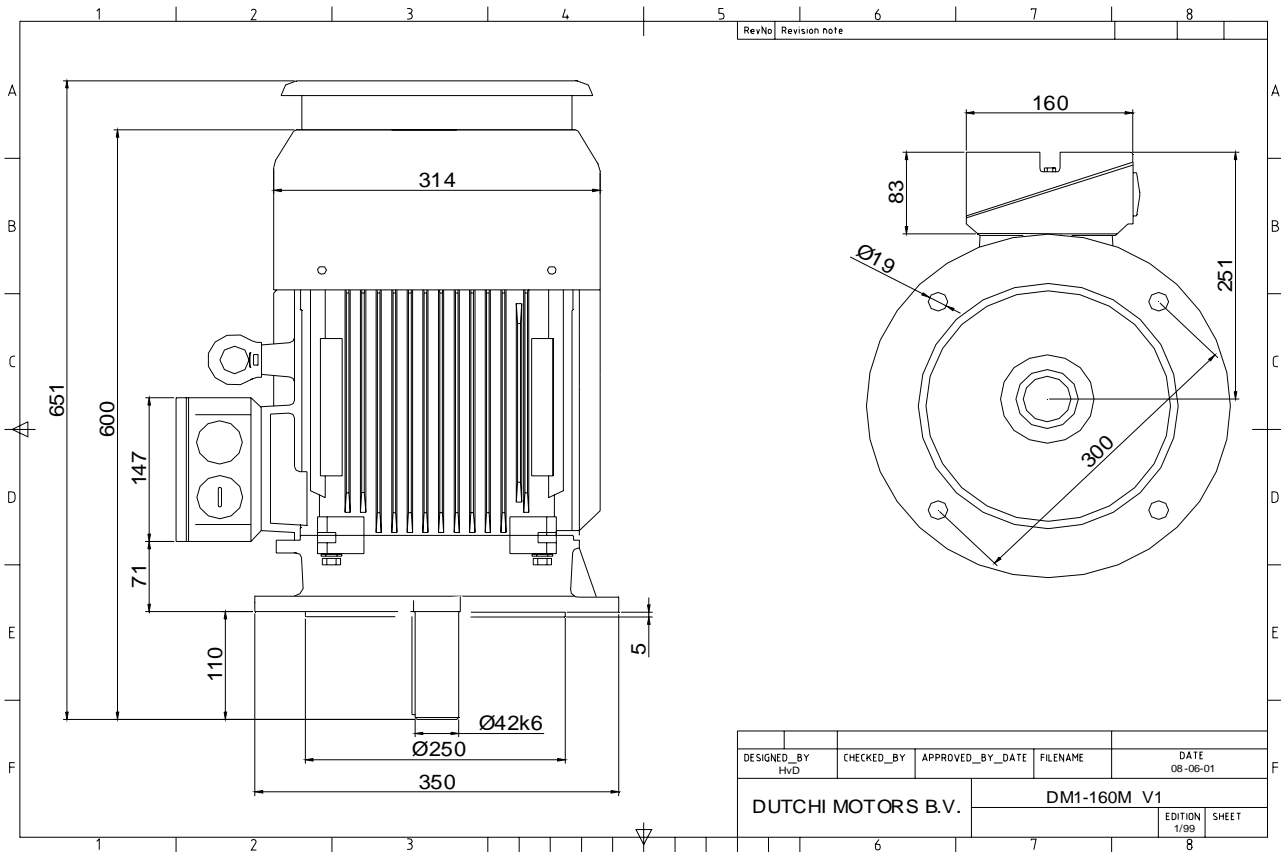


Specification	IEC 60034-1
Manufacturer	Dutchi Motors B.V.
Motor type	DM1- 160 MX8
Rated power	5,5 kW S1 duty
Speed	720 r.p.m
Voltage	400 / 690 V
Frequency	50 Hz
Connection	Δ / Y
Amps full load	12,39 / 7,15 A
Amps no-load(400V)	7,40 A
Enclosure	IP 55
Insulation Class	F (temp. rise B (80 K))
Max. coolant temp.	40°C
Max. altitude	1.000 mtr, above sea level
Comment	3 x PTC 150°C
Cable entries	2 x M40x1,5 + 1 x M20x1,5 (ptc)
Feature	Cast-iron motor
Weight	106 kg
Catalog no.	11238550D
Warranty	12~18 months

Efficiency class	N/A			
Load data	100%	75%	50%	25%
Efficiency	84,6	84,8	82,6	73,4 %
Power factor	0,76	0,68	0,55	0,34
Sound pressure level (1m)				58,1 dB(A)
Resistance R20 (open)				2,399 Ω
Resistance R20	Δ			1,599 Ω
Full load torque				72,95 Nm
DOL Starting torque vs FL torque				2,08
DOL Pull up torque vs FL torque				1,56
DOL Pull out torque vs FL torque				3,18
Star-Delta Starting torque vs FL torque				0,65
Star-Delta Pull up torque vs FL torque				0,49
Star-Delta Pull out torque vs FL torque				0,99
DOL Starting current vs FL current				5,97
Star Delta Starting current vs FL current				1,86
Rotor Inertia				0,0821 kgm ²
Bearing DE				6309 - ZZ C3
Bearing NDE				6309 - ZZ C3

WI	Change	date	sign.
Dutchi Motors B.V. P.O. Box 5390 NL-6802 EJ ARNHEM Tel : +31-(0)26 - 3541 600 Fax : +31-(0)26 - 3541 650		Discription Drawing made by :	date 27-04-04 sign. HvD
dutchi.motors@dutchi.nl www.dutchi.com			

Power is our commodity, the world is our market !



Specification **IEC 60034-1**
 Manufacturer **Dutchi Motors B.V.**
 Motor type **DM1- 160 MX8**
 Rated power **5,5** kW **S1** duty
 Speed **720** r.p.m
 Voltage **400 / 690** V
 Frequency **50** Hz
 Connection **Δ / Y**
 Amps full load **12,39 / 7,15** A
 Amps no-load(400V) **7,40** A
 Enclosure **IP 55**
 Insulation Class **F (temp. rise B (80 K))**

Max. coolant temp. **40°C**
 Max. altitude **1.000** mtr, above sea level
 Comment **3 x PTC 150°C**
 Cable entries **2 x M40x1,5 + 1 x M20x1,5 (ptc)**

Feature **Cast-iron motor**
 Weight **106** kg
 Catalog no. **11038550D**
 Warranty **12~18 months**

Efficiency class **N/A**
 Load data 100% 75% 50% 25%
 Efficiency **84,6 84,8 82,6 73,4** %
 Power factor **0,76 0,68 0,55 0,34**

Sound pressure level (1m) **58,1** dB(A)
 Resistance R20 (open) **2,399** Ω
 Resistance R20 **Δ 1,599** Ω

Full load torque **72,95** Nm
 DOL Starting torque vs FL torque **2,08**
 DOL Pull up torque vs FL torque **1,56**
 DOL Pull out torque vs FL torque **3,18**
 Star-Delta Starting torque vs FL torque **0,65**
 Star-Delta Pull up torque vs FL torque **0,49**
 Star-Delta Pull out torque vs FL torque **0,99**
 DOL Starting current vs FL current **5,97**
 Star Delta Starting current vs FL current **1,86**
 Rotor Inertia **0,0821** kgm²

Bearing DE **6309 - ZZ C3**
 Bearing NDE **6309 - ZZ C3**

WI	Change	date	sign.
Dutchi Motors B.V.		Description	date
P.O. Box 5390		Drawing made by :	27-04-04
NL-6802 EJ ARNHEM			
Tel : +31-(0)26 - 3541 600		dutchi.motors@dutchi.nl	
Fax : +31-(0)26 - 3541 650		www.dutchi.com	