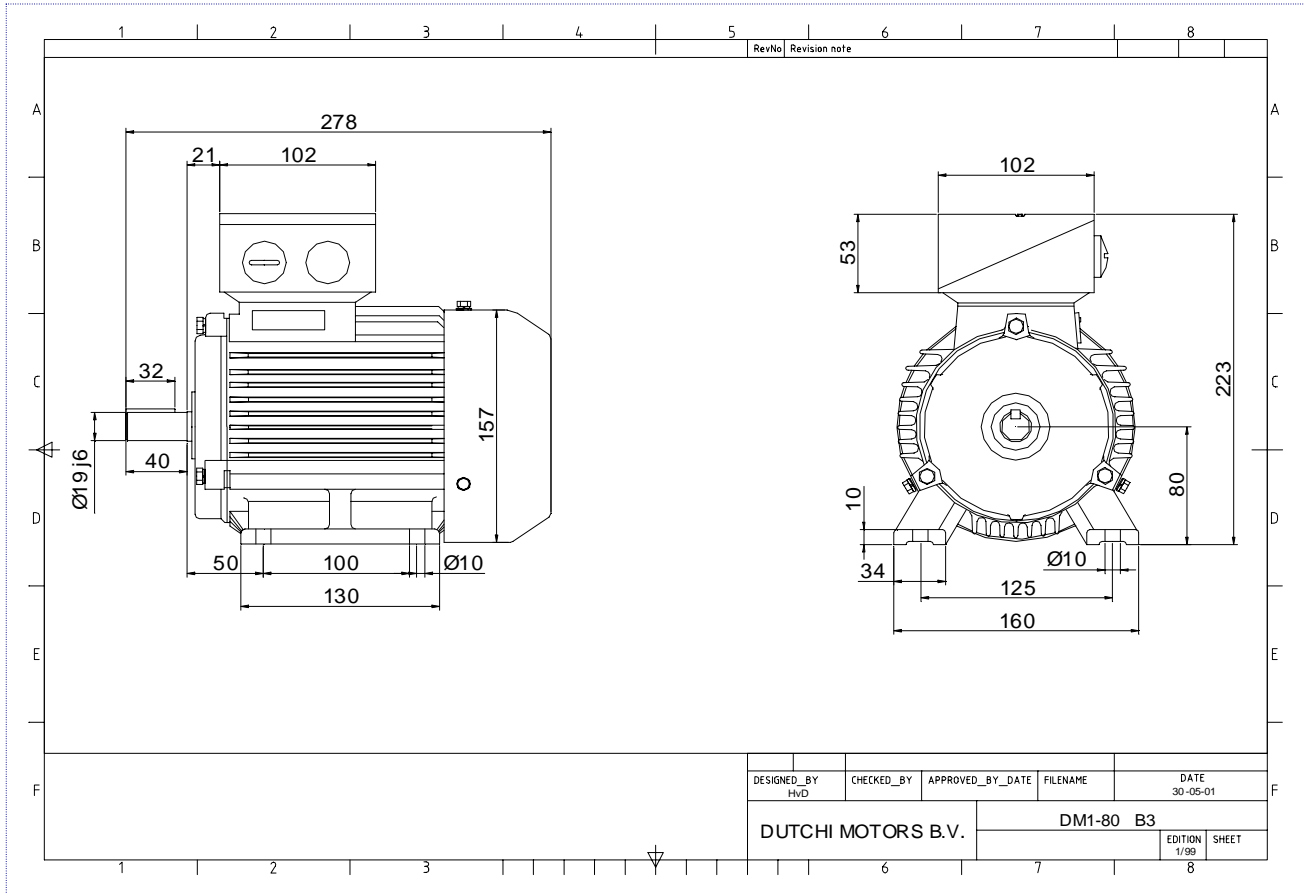


Power is our commodity, the world is our market !



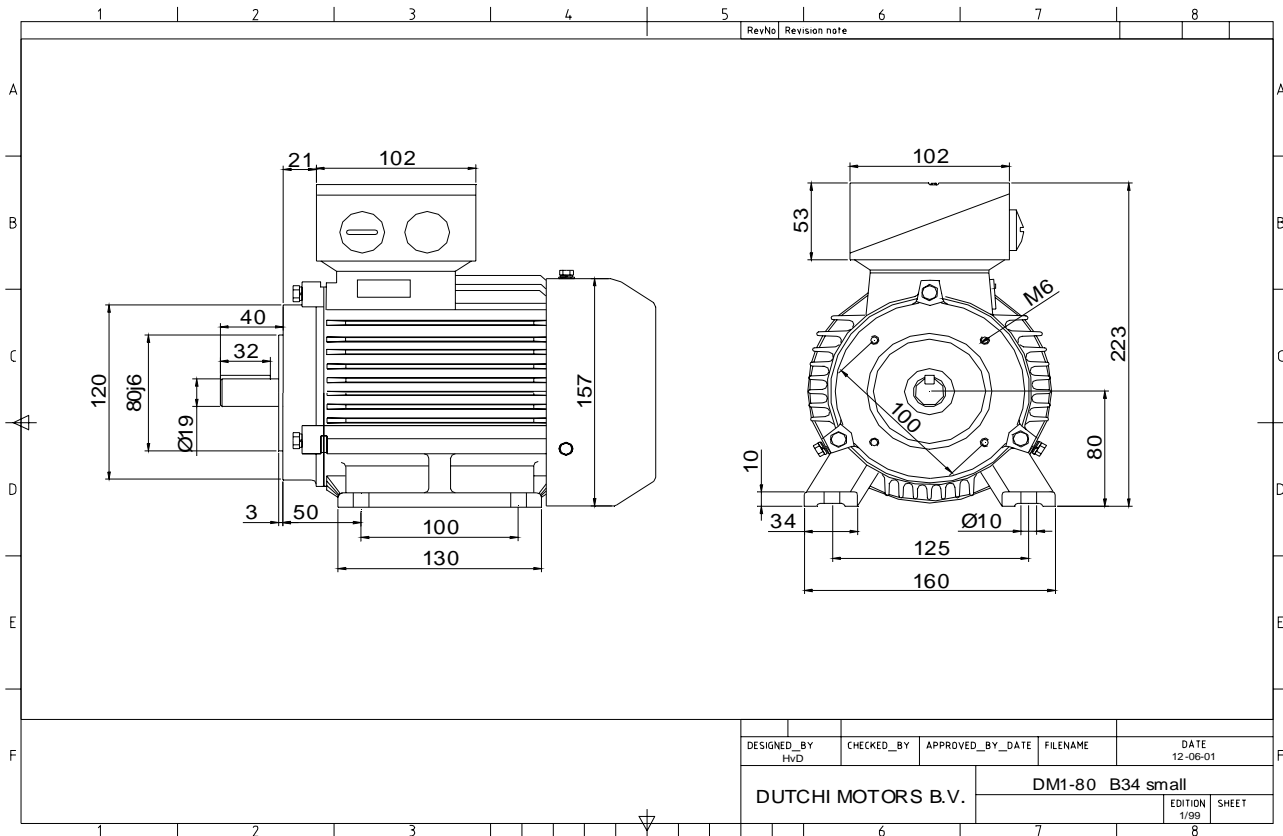
Specification	IEC 60034-1
Manufacturer	Dutchi Motors B.V.
Motor type	DM1- 80 G8
Rated power	0,25 kW S1 duty
Speed	690 r.p.m
Voltage	230 / 400 V
Frequency	50 Hz
Connection	Δ / Y
Amps full load	1,88 / 1,09 A
Amps no-load(400V)	1,00 A
Enclosure	IP 55
Insulation Class	F (temp. rise B (80 K))
Max. coolant temp.	40°C
Max. altitude	1.000 mtr, above sea level
Comment	3 x PTC 150°C
Cable entries	2 x M25x1,5 + 1 x M20x1,5 (ptc)
Feature	Cast-iron motor
Weight	20,0 kg
Catalog no.	11128025D
Warranty	12~18 months

Efficiency class	N/A			
Load data	100%	75%	50%	25%
Efficiency	57,2	54,9	44,9	27,2 %
Power factor	0,58	0,52	0,41	0,30
Sound pressure level (1m)				43,0 dB(A)
Resistance R20 (open)				26,66 Ω
Resistance R20	Y			53,32 Ω
Full load torque				3,46 Nm
DOL Starting torque vs FL torque				2,36
DOL Pull up torque vs FL torque				1,66
DOL Pull out torque vs FL torque				3,09
Star-Delta Starting torque vs FL torque				Y - motor
Star-Delta Pull up torque vs FL torque				Y - motor
Star-Delta Pull out torque vs FL torque				Y - motor
DOL Starting current vs FL current				2,82
Star Delta Starting current vs FL current				Y - motor
Rotor Inertia				0,0021 kgm ²
Bearing DE				6204 - ZZ
Bearing NDE				6204 - ZZ

Extras / Options :

WI	Change	date	sign.
Dutchi Motors B.V. P.O. Box 5390 NL-6802 EJ ARNHEM Tel : +31-(0)26 - 3541 600 Fax : +31-(0)26 - 3541 650		Discription Drawing made by :	date 19-04-04 sign. HvD
		dutchi.motors@dutchi.nl www.dutchi.com	

Power is our commodity, the world is our market !



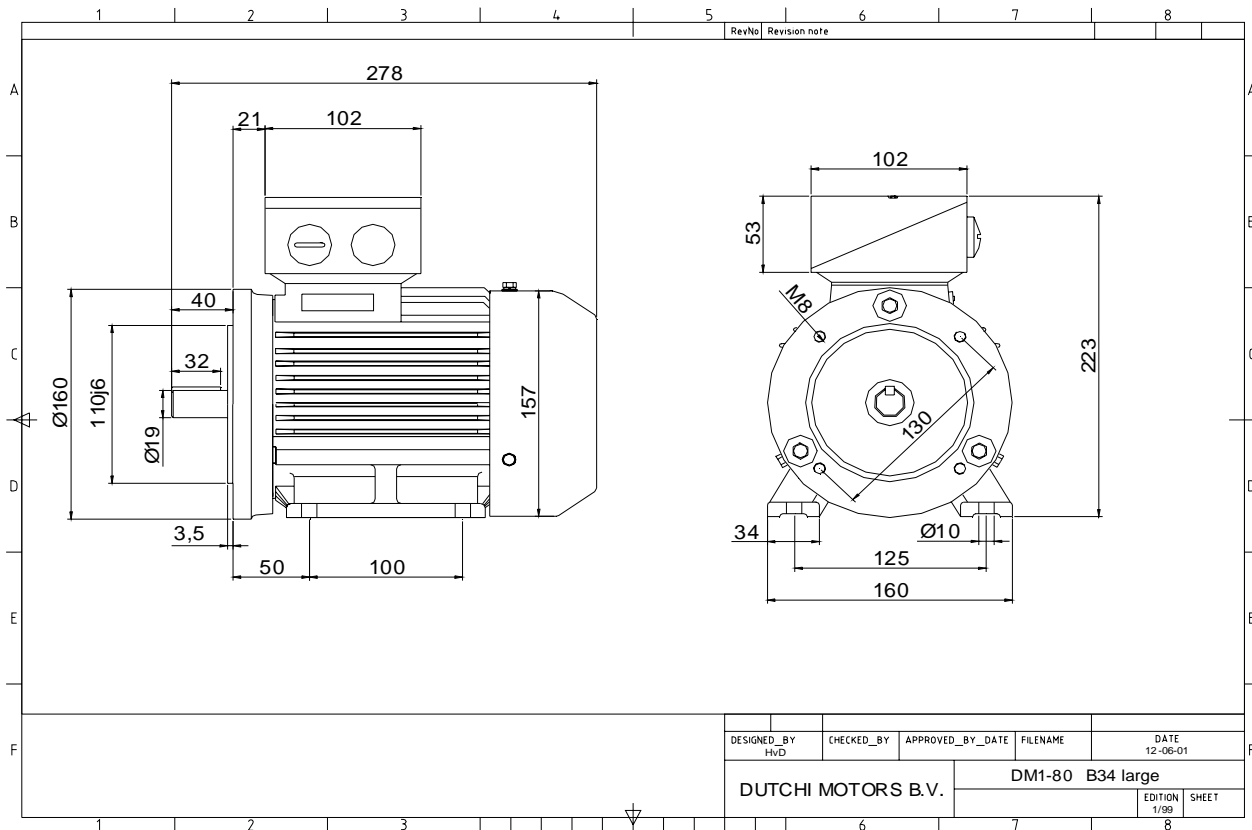
Specification	IEC 60034-1
Manufacturer	Dutchi Motors B.V.
Motor type	DM1- 80 G8
Rated power	0,25 kW S1 duty
Speed	690 r.p.m
Voltage	230 / 400 V
Frequency	50 Hz
Connection	Δ / Y
Amps full load	1,88 / 1,09 A
Amps no-load(400V)	1,00 A
Enclosure	IP 55
Insulation Class	F (temp. rise B (80 K))
Max. coolant temp.	40°C
Max. altitude	1.000 mtr, above sea level
Comment	3 x PTC 150°C
Cable entries	2 x M25x1,5 + 1 x M20x1,5 (ptc)
Feature	Cast-iron motor
Weight	20,0 kg
Catalog no.	11628025D
Warranty	12~18 months

Efficiency class	N/A			
Load data	100%	75%	50%	25%
Efficiency	57,2	54,9	44,9	27,2 %
Power factor	0,58	0,52	0,41	0,30
Sound pressure level (1m)				43,0 dB(A)
Resistance R20 (open)				26,66 Ω
Resistance R20	Y		53,32	Ω
Full load torque				3,46 Nm
DOL Starting torque vs FL torque				2,36
DOL Pull up torque vs FL torque				1,66
DOL Pull out torque vs FL torque				3,09
Star-Delta Starting torque vs FL torque				Y - motor
Star-Delta Pull up torque vs FL torque				Y - motor
Star-Delta Pull out torque vs FL torque				Y - motor
DOL Starting current vs FL current				2,82
Star Delta Starting current vs FL current				Y - motor
Rotor Inertia				0,0021 kgm ²
Bearing DE				6204 - ZZ
Bearing NDE				6204 - ZZ

Extras / Options :

WI	Change	date	sign.
Dutchi Motors B.V. P.O. Box 5390 NL-6802 EJ ARNHEM Tel : +31-(0)26 - 3541 600 Fax : +31-(0)26 - 3541 650		Discription Drawing made by :	date 19-04-04
dutchi.motors@dutchi.nl www.dutchi.com		sign. HvD	

Power is our commodity, the world is our market !



Specification **IEC 60034-1**
 Manufacturer **Dutchi Motors B.V.**
 Motor type **DM1- 80 G8**
 Rated power **0,25** kW **S1** duty
 Speed **690** r.p.m
 Voltage **230** / **400** V
 Frequency **50** Hz
 Connection **Δ** / **Y**
 Amps full load **1,88** / **1,09** A
 Amps no-load(400V) **1,00** A
 Enclosure **IP 55**
 Insulation Class **F (temp. rise B (80 K))**

Max. coolant temp. **40°C**
 Max. altitude **1.000** mtr, above sea level
 Comment **3 x PTC 150°C**
 Cable entries **2 x M25x1,5 + 1 x M20x1,5 (ptc)**

Feature **Cast-iron motor**
 Weight **20,0** kg
 Catalog no. **11728025D**
 Warranty **12~18 months**

Efficiency class **N/A**
 Load data 100% 75% 50% 25%
 Efficiency **57,2 54,9 44,9 27,2** %
 Power factor **0,58 0,52 0,41 0,30**

Sound pressure level (1m) **43,0** dB(A)
 Resistance R20 (open) **26,66** Ω
 Resistance R20 **Y 53,32** Ω

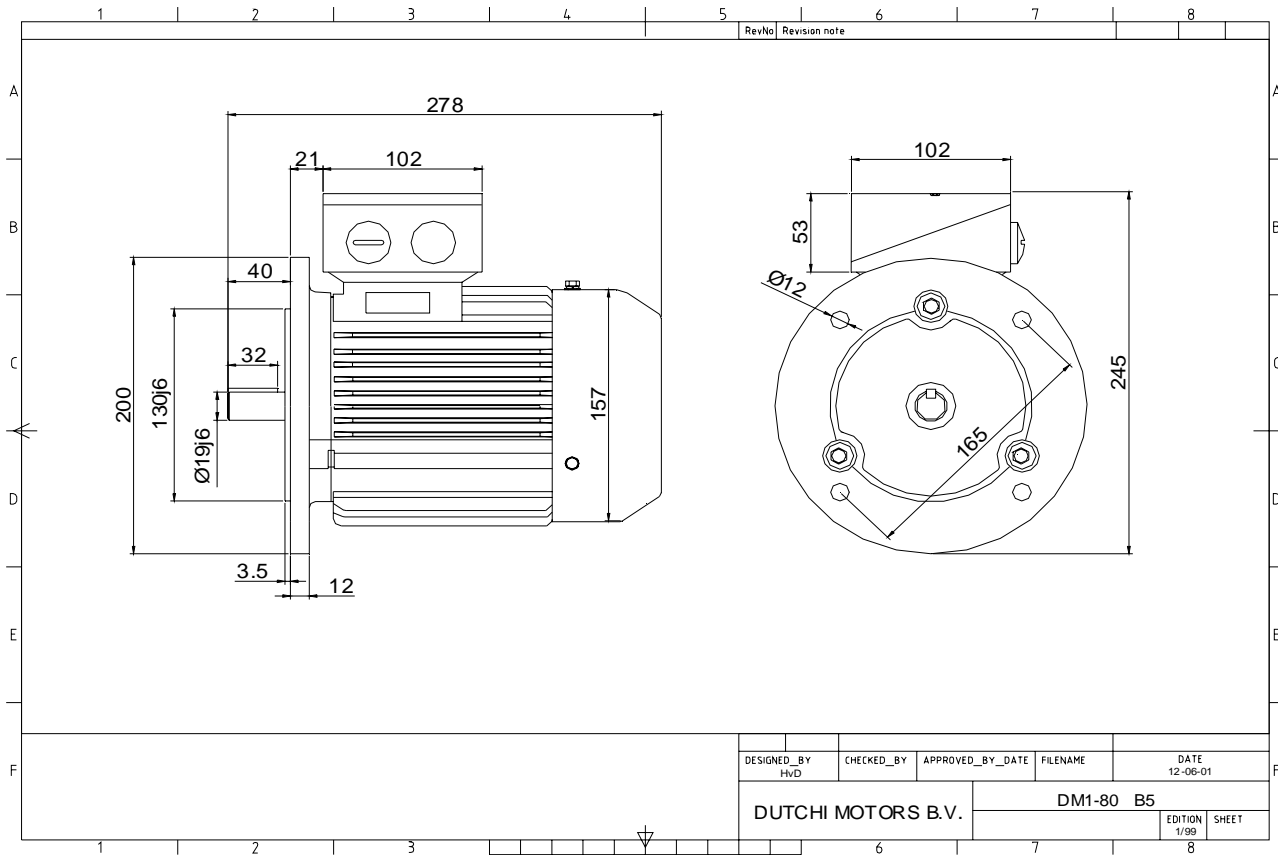
Full load torque **3,46** Nm
 DOL Starting torque vs FL torque **2,36**
 DOL Pull up torque vs FL torque **1,66**
 DOL Pull out torque vs FL torque **3,09**
 Star-Delta Starting torque vs FL torque **Y - motor**
 Star-Delta Pull up torque vs FL torque **Y - motor**
 Star-Delta Pull out torque vs FL torque **Y - motor**
 DOL Starting current vs FL current **2,82**
 Star Delta Starting current vs FL current **Y - motor**
 Rotor Inertia **0,0021** kgm²

Bearing DE **6204 - ZZ**
 Bearing NDE **6204 - ZZ**

Extras / Options :

WI	Change	date	sign.
Dutchi Motors B.V. P.O. Box 5390 NL-6802 EJ ARNHEM Tel : +31-(0)26 - 3541 600 Fax : +31-(0)26 - 3541 650		Description	date
		Drawing made by :	19-04-04
		dutchi.motors@dutchi.nl www.dutchi.com	

Power is our commodity, the world is our market !



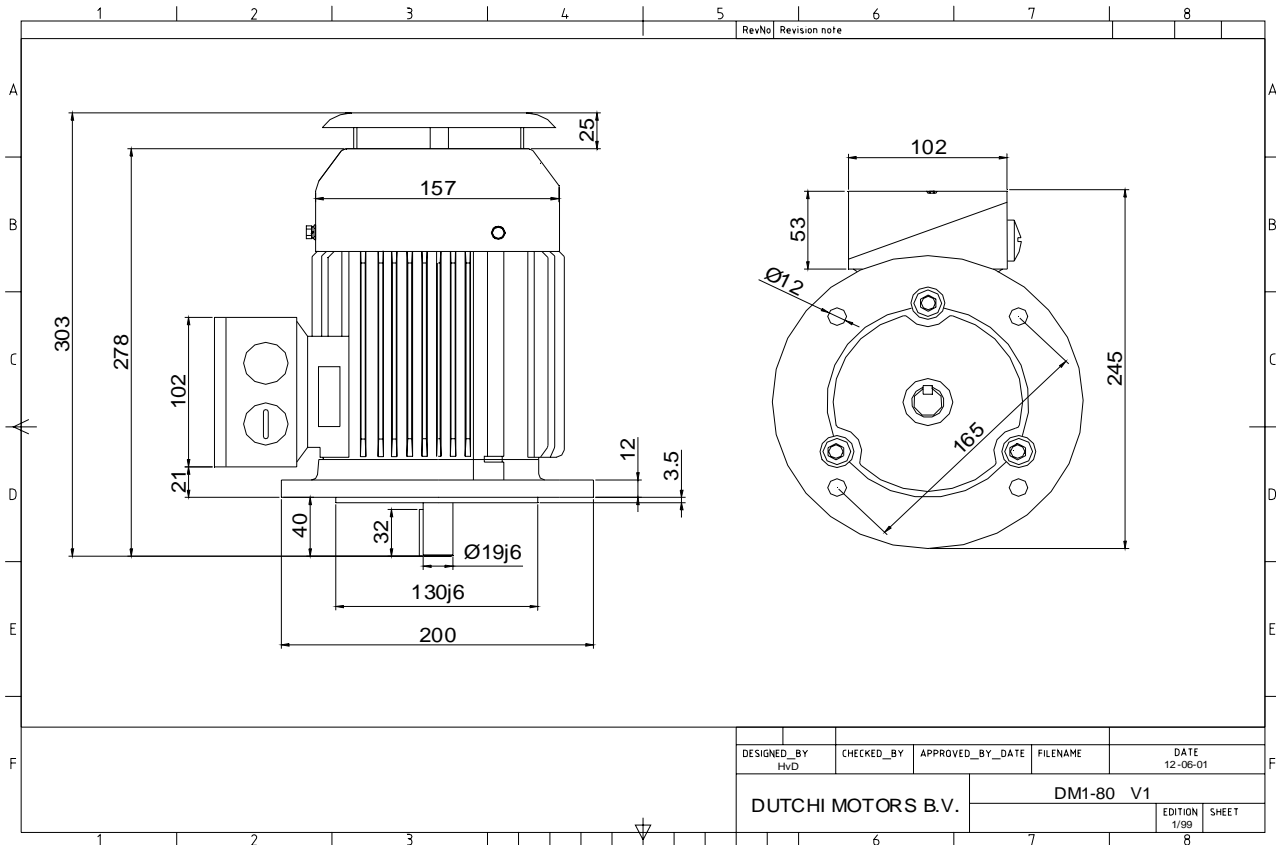
Specification	IEC 60034-1
Manufacturer	Dutchi Motors B.V.
Motor type	DM1- 80 G8
Rated power	0,25 kW S1 duty
Speed	690 r.p.m
Voltage	230 / 400 V
Frequency	50 Hz
Connection	Δ / Y
Amps full load	1,88 / 1,09 A
Amps no-load(400V)	1,00 A
Enclosure	IP 55
Insulation Class	F (temp. rise B (80 K))
Max. coolant temp.	40°C
Max. altitude	1.000 mtr, above sea level
Comment	3 x PTC 150°C
Cable entries	2 x M25x1,5 + 1 x M20x1,5 (ptc)
Feature	Cast-iron motor
Weight	20,0 kg
Catalog no.	11228025D
Warranty	12~18 months

Efficiency class	N/A			
Load data	100%	75%	50%	25%
Efficiency	57,2	54,9	44,9	27,2 %
Power factor	0,58	0,52	0,41	0,30
Sound pressure level (1m)				43,0 dB(A)
Resistance R20 (open)				26,66 Ω
Resistance R20	Y		53,32	Ω
Full load torque				3,46 Nm
DOL Starting torque vs FL torque				2,36
DOL Pull up torque vs FL torque				1,66
DOL Pull out torque vs FL torque				3,09
Star-Delta Starting torque vs FL torque				Y - motor
Star-Delta Pull up torque vs FL torque				Y - motor
Star-Delta Pull out torque vs FL torque				Y - motor
DOL Starting current vs FL current				2,82
Star Delta Starting current vs FL current				Y - motor
Rotor Inertia				0,0021 kgm ²
Bearing DE				6204 - ZZ
Bearing NDE				6204 - ZZ

Extras / Options :

WI	Change	date	sign.
Dutchi Motors B.V. P.O. Box 5390 NL-6802 EJ ARNHEM Tel : +31-(0)26 - 3541 600 Fax : +31-(0)26 - 3541 650		Discription Drawing made by :	date 19-04-04 sign. HvD
dutchi.motors@dutchi.nl www.dutchi.com			

Power is our commodity, the world is our market !



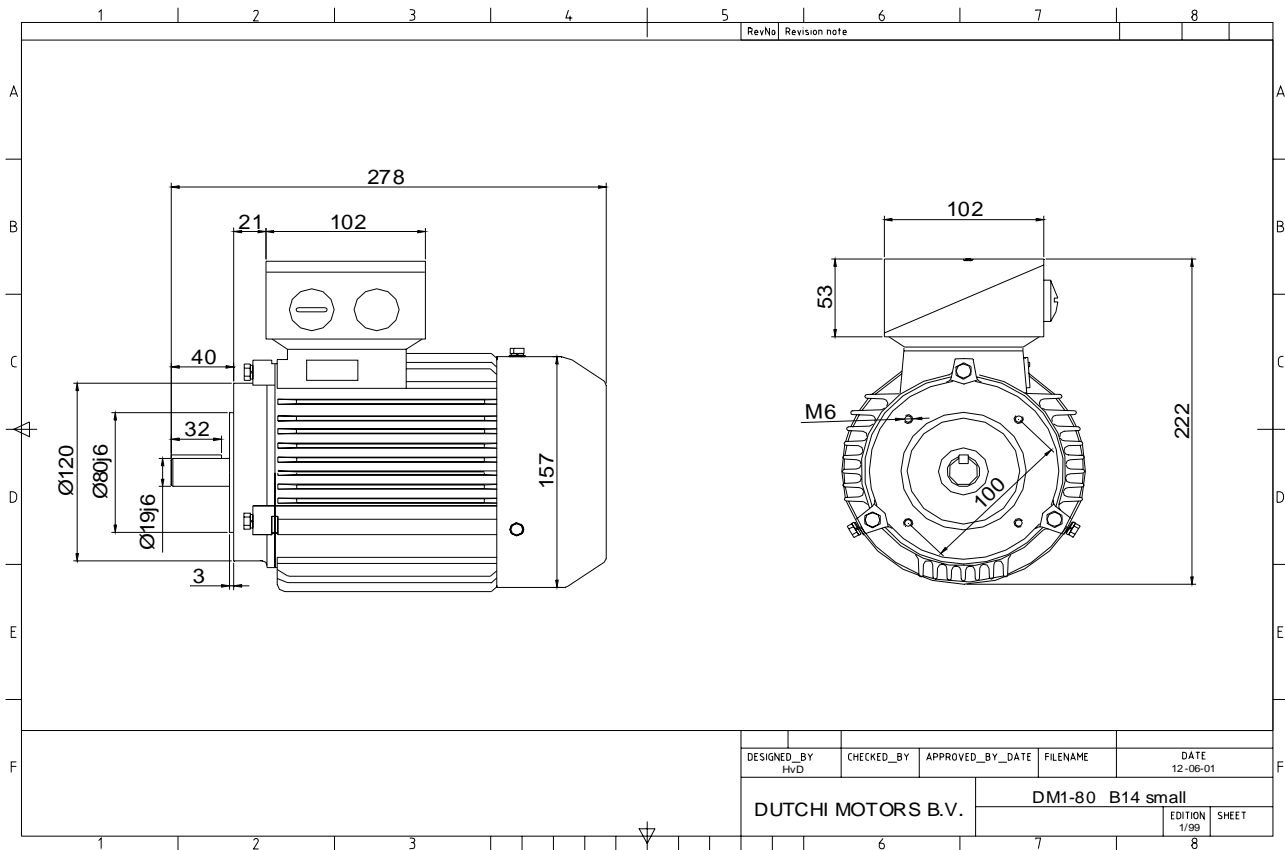
Specification	IEC 60034-1
Manufacturer	Dutchi Motors B.V.
Motor type	DM1- 80 G8
Rated power	0,25 kW S1 duty
Speed	690 r.p.m
Voltage	230 / 400 V
Frequency	50 Hz
Connection	Δ / Y
Amps full load	1,88 / 1,09 A
Amps no-load(400V)	1,00 A
Enclosure	IP 55
Insulation Class	F (temp. rise B (80 K))
Max. coolant temp.	40°C
Max. altitude	1.000 mtr, above sea level
Comment	3 x PTC 150°C
Cable entries	2 x M25x1,5 + 1 x M20x1,5 (ptc)
Feature	Cast-iron motor
Weight	20,0 kg
Catalog no.	11028025D
Warranty	12~18 months

Efficiency class	N/A			
Load data	100%	75%	50%	25%
Efficiency	57,2	54,9	44,9	27,2 %
Power factor	0,58	0,52	0,41	0,30
Sound pressure level (1m)				43,0 dB(A)
Resistance R20 (open)				26,66 Ω
Resistance R20	Y		53,32	Ω
Full load torque				3,46 Nm
DOL Starting torque vs FL torque				2,36
DOL Pull up torque vs FL torque				1,66
DOL Pull out torque vs FL torque				3,09
Star-Delta Starting torque vs FL torque				Y - motor
Star-Delta Pull up torque vs FL torque				Y - motor
Star-Delta Pull out torque vs FL torque				Y - motor
DOL Starting current vs FL current				2,82
Star Delta Starting current vs FL current				Y - motor
Rotor Inertia				0,0021 kgm ²
Bearing DE				6204 - ZZ
Bearing NDE				6204 - ZZ

Extras / Options :

WI	Change	date	sign.
Dutchi Motors B.V. P.O. Box 5390 NL-6802 EJ ARNHEM Tel : +31-(0)26 - 3541 600 Fax : +31-(0)26 - 3541 650		Discription Drawing made by :	date 19-04-04 sign. HvD
dutchi.motors@dutchi.nl www.dutchi.com			

Power is our commodity, the world is our market !



Specification **IEC 60034-1**
 Manufacturer **Dutchi Motors B.V.**
 Motor type **DM1- 80 G8**
 Rated power **0,25** kW **S1** duty
 Speed **690** r.p.m
 Voltage **230 / 400** V
 Frequency **50** Hz
 Connection **Δ / Y**
 Amps full load **1,88 / 1,09** A
 Amps no-load(400V) **1,00** A
 Enclosure **IP 55**
 Insulation Class **F (temp. rise B (80 K))**

Max. coolant temp. **40°C**
 Max. altitude **1.000** mtr, above sea level
 Comment **3 x PTC 150°C**
 Cable entries **2 x M25x1,5 + 1 x M20x1,5 (ptc)**

Feature **Cast-iron motor**
 Weight **20,0** kg
 Catalog no. **11328025D**
 Warranty **12~18 months**

Efficiency class **N/A**
 Load data 100% 75% 50% 25%
 Efficiency **57,2 54,9 44,9 27,2** %
 Power factor **0,58 0,52 0,41 0,30**

Sound pressure level (1m) **43,0** dB(A)
 Resistance R20 (open) **26,66** Ω
 Resistance R20 **Y 53,32** Ω

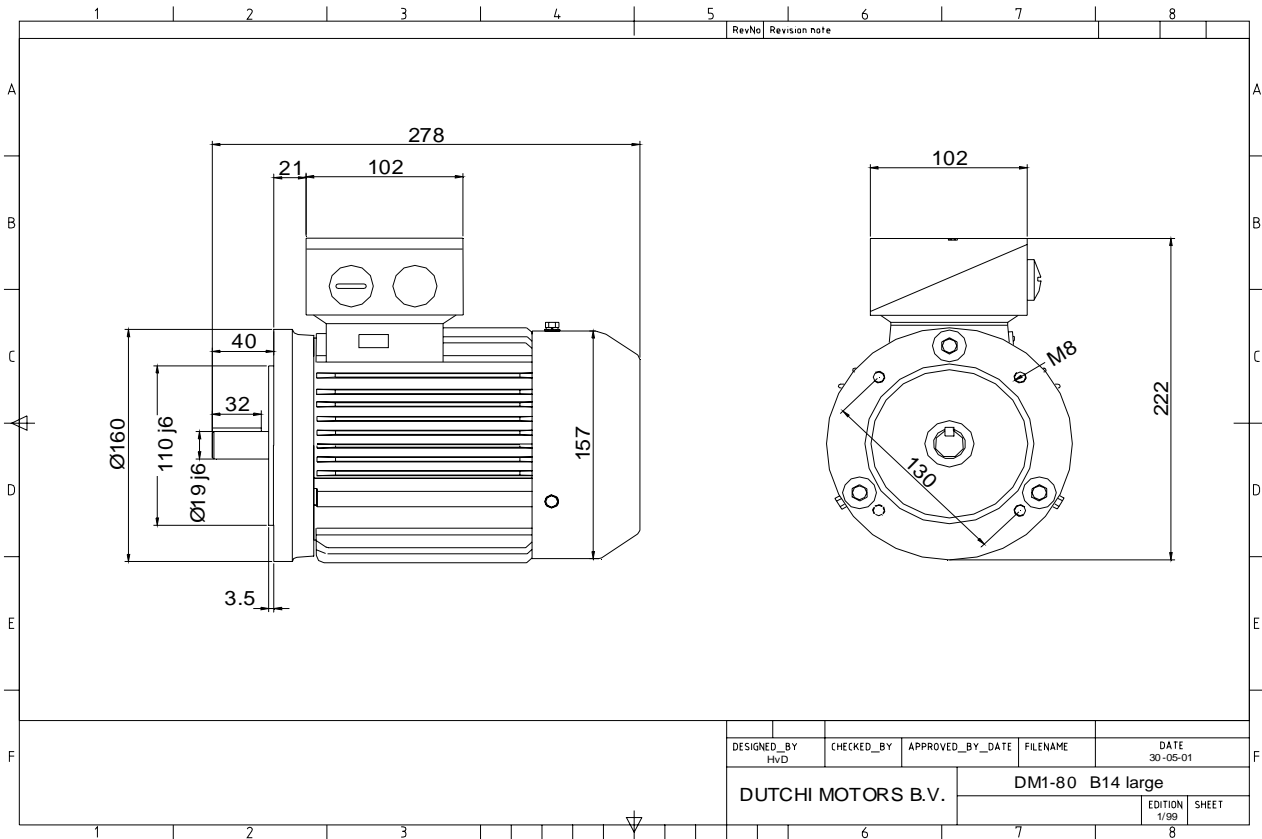
Full load torque **3,46** Nm
 DOL Starting torque vs FL torque **2,36**
 DOL Pull up torque vs FL torque **1,66**
 DOL Pull out torque vs FL torque **3,09**
 Star-Delta Starting torque vs FL torque **Y - motor**
 Star-Delta Pull up torque vs FL torque **Y - motor**
 Star-Delta Pull out torque vs FL torque **Y - motor**
 DOL Starting current vs FL current **2,82**
 Star Delta Starting current vs FL current **Y - motor**
 Rotor Inertia **0,0021** kgm²

Bearing DE **6204 - ZZ**
 Bearing NDE **6204 - ZZ**

Extras / Options :

WI	Change	date	sign.
Dutchi Motors B.V.		Description	date
P.O. Box 5390		Drawing made by :	19-04-04
NL-6802 EJ ARNHEM			
Tel : +31-(0)26 - 3541 600		dutchi.motors@dutchi.nl	
Fax : +31-(0)26 - 3541 650		www.dutchi.com	

Power is our commodity, the world is our market !



Specification **IEC 60034-1**
 Manufacturer **Dutchi Motors B.V.**
 Motor type **DM1- 80 G8**
 Rated power **0,25** kW **S1** duty
 Speed **690** r.p.m
 Voltage **230 / 400** V
 Frequency **50** Hz
 Connection **Δ / Y**
 Amps full load **1,88 / 1,09** A
 Amps no-load(400V) **1,00** A
 Enclosure **IP 55**
 Insulation Class **F (temp. rise B (80 K))**

Max. coolant temp. **40°C**
 Max. altitude **1.000** mtr, above sea level
 Comment **3 x PTC 150°C**
 Cable entries **2 x M25x1,5 + 1 x M20x1,5 (ptc)**

Feature **Cast-iron motor**
 Weight **20,0** kg
 Catalog no. **11428025D**
 Warranty **12~18 months**

Efficiency class **N/A**
 Load data 100% 75% 50% 25%
 Efficiency **57,2 54,9 44,9 27,2** %
 Power factor **0,58 0,52 0,41 0,30**

Sound pressure level (1m) **43,0** dB(A)
 Resistance R20 (open) **26,66** Ω
 Resistance R20 **Y 53,32** Ω

Full load torque **3,46** Nm
 DOL Starting torque vs FL torque **2,36**
 DOL Pull up torque vs FL torque **1,66**
 DOL Pull out torque vs FL torque **3,09**
 Star-Delta Starting torque vs FL torque **Y - motor**
 Star-Delta Pull up torque vs FL torque **Y - motor**
 Star-Delta Pull out torque vs FL torque **Y - motor**
 DOL Starting current vs FL current **2,82**
 Star Delta Starting current vs FL current **Y - motor**
 Rotor Inertia **0,0021** kgm2

Bearing DE **6204 - ZZ**
 Bearing NDE **6204 - ZZ**

Extras / Options :

WI	Change	date	sign.
Dutchi Motors B.V.		Description	date
P.O. Box 5390		Drawing made by :	19-04-04
NL-6802 EJ ARNHEM			
Tel : +31-(0)26 - 3541 600		dutchi.motors@dutchi.nl	
Fax : +31-(0)26 - 3541 650		www.dutchi.com	