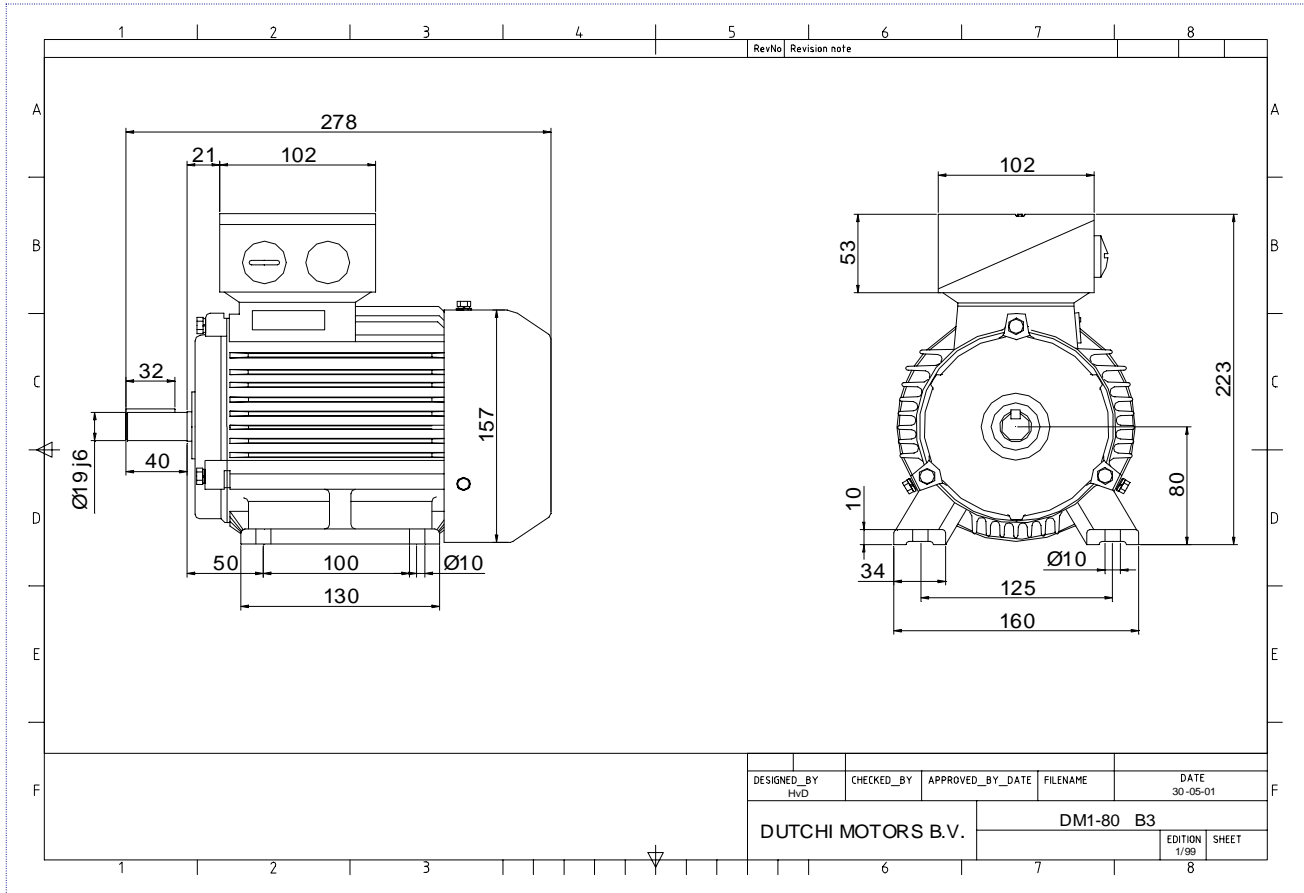


Power is our commodity, the world is our market !



Specification **IEC 60034-1**
 Manufacturer **Dutchi Motors B.V.**
 Motor type **DM1-HE 80G2**
 Rated power **1,10** kW **S1** duty
 Speed **2880** r.p.m
 Voltage **230 / 400** V
 Frequency **50** Hz
 Connection **Δ / Y**
 Amps full load **4,0 / 2,3** A
 Amps no-load(400V) **1,20** A
 Enclosure **IP 55**
 Insulation Class **F (temp. rise B (80 K))**

Max. coolant temp. **40°C**
 Max. altitude **1.000** mtr, above sea level
 Comment **3 x PTC 150°C**
 Cable entries **2 x M25x1,5 + 1 x M20x1,5 (ptc)**

Feature **Cast-iron motor**
 Weight **kg**
 Catalog no. **11122110DH**
 Warranty **12~18 months**

Efficiency class **EFF 1**
 Load data 100% 75% 50% 25%
 Efficiency **83,7 85,0 83,3 75,2** %
 Power factor **0,82 0,78 0,63 0,40**

Sound pressure level (1m) **64,2** dB(A)
 Resistance R20 (open) **5,267** Ω
 Resistance R20 **Y 10,533** Ω

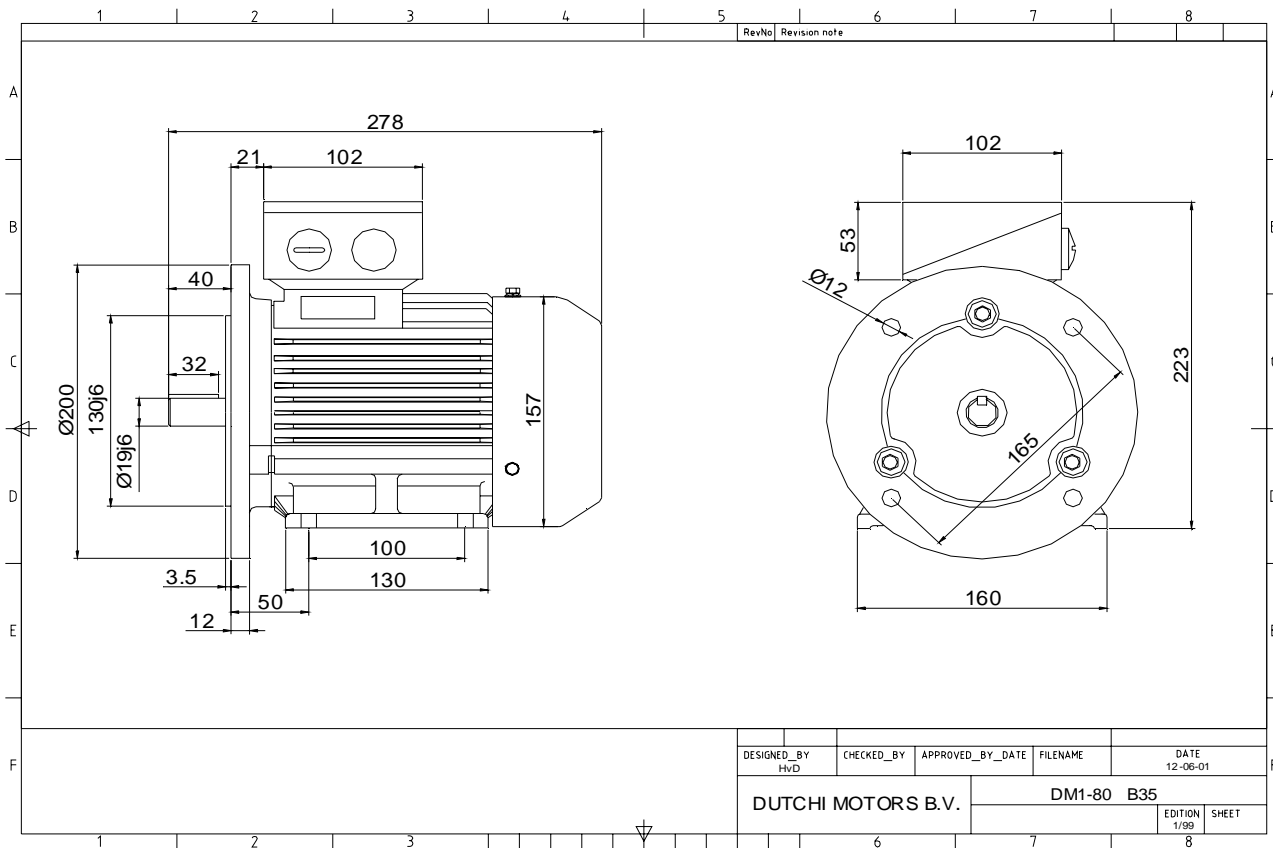
Full load torque **4** Nm
 DOL Starting torque vs FL torque **3,22**
 DOL Pull up torque vs FL torque **2,05**
 DOL Pull out torque vs FL torque **3,58**
 Star-Delta Starting torque vs FL torque **Y - motor**
 Star-Delta Pull up torque vs FL torque **Y - motor**
 Star-Delta Pull out torque vs FL torque **Y - motor**
 DOL Starting current vs FL current **7,47**
 Star Delta Starting current vs FL current **Y - motor**

Rotor Inertia **kgm2**

Bearing DE **6204 - ZZ**
 Bearing NDE **6204 - ZZ**

WI	Change	date	sign.
Dutchi Motors B.V. P.O. Box 5390 NL-6802 EJ ARNHEM Tel : +31-(0)26 - 3541 600 Fax : +31-(0)26 - 3541 650		Discription	date
		Drawing made by :	27-04-04
		dutchi.motors@dutchi.nl www.dutchi.com	

Power is our commodity, the world is our market !



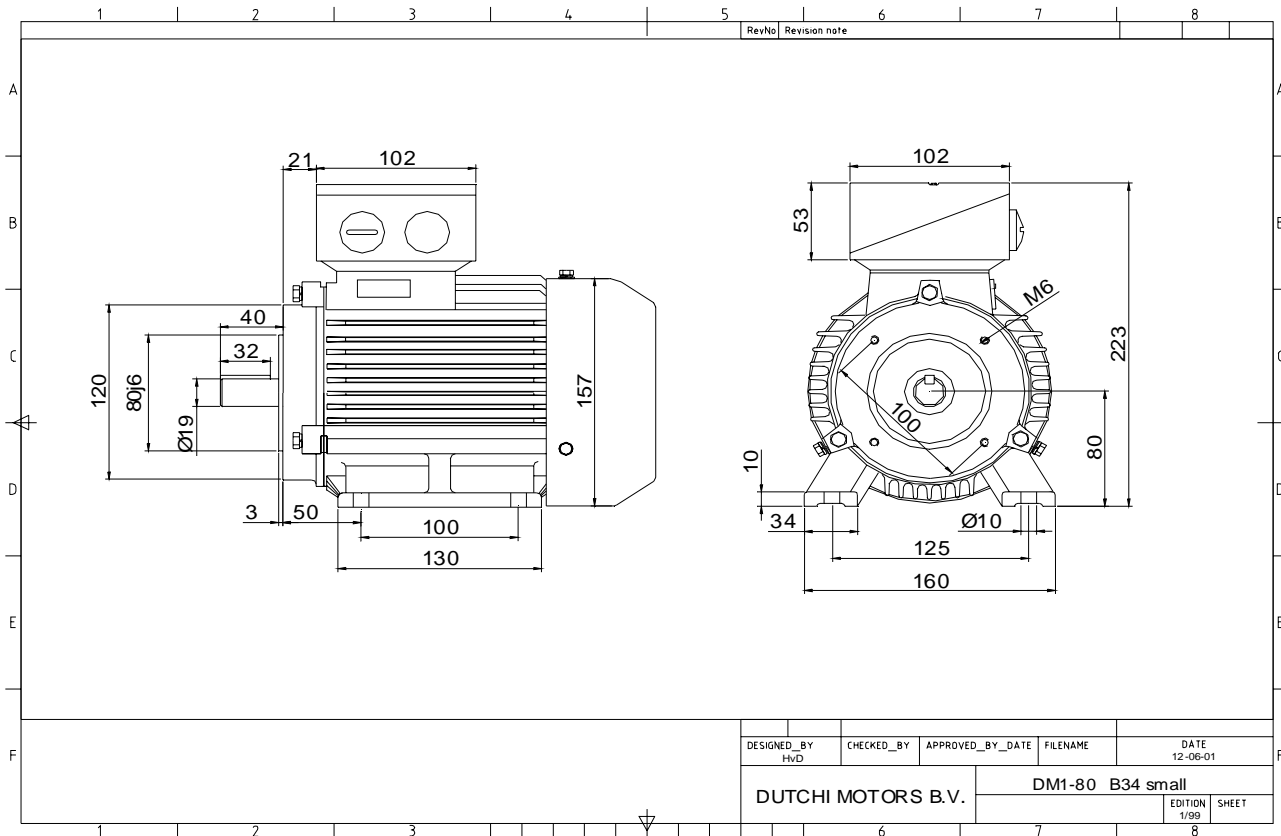
DESIGNED_BY HvD	CHECKED_BY	APPROVED_BY_DATE	FILENAME	DATE 12-06-01
DUTCHI MOTORS B.V.		DM1-80 B35		EDITION 1/00
				SHEET

Specification	IEC 60034-1
Manufacturer	Dutchi Motors B.V.
Motor type	DM1-HE 80G2
Rated power	1,10 kW S1 duty
Speed	2880 r.p.m
Voltage	230 / 400 V
Frequency	50 Hz
Connection	Δ / Y
Amps full load	4,0 / 2,3 A
Amps no-load(400V)	1,20 A
Enclosure	IP 55
Insulation Class	F (temp. rise B (80 K))
Max. coolant temp.	40°C
Max. altitude	1.000 mtr, above sea level
Comment	3 x PTC 150°C
Cable entries	2 x M25x1,5 + 1 x M20x1,5 (ptc)
Feature	Cast-iron motor
Weight	kg
Catalog no.	11522110DH
Warranty	12~18 months

Efficiency class	EFF 1			
Load data	100%	75%	50%	25%
Efficiency	83,7	85,0	83,3	75,2 %
Power factor	0,82	0,78	0,63	0,40
Sound pressure level (1m)				64,2 dB(A)
Resistance R20 (open)				5,267 Ω
Resistance R20	Y		10,533 Ω	
Full load torque				4 Nm
DOL Starting torque vs FL torque				3,22
DOL Pull up torque vs FL torque				2,05
DOL Pull out torque vs FL torque				3,58
Star-Delta Starting torque vs FL torque				Y - motor
Star-Delta Pull up torque vs FL torque				Y - motor
Star-Delta Pull out torque vs FL torque				Y - motor
DOL Starting current vs FL current				7,47
Star Delta Starting current vs FL current				Y - motor
Rotor Inertia				kgm ²
Bearing DE				6204 - ZZ
Bearing NDE				6204 - ZZ

WI	Change	date	sign.
Dutchi Motors B.V. P.O. Box 5390 NL-6802 EJ ARNHEM Tel : +31-(0)26 - 3541 600 Fax : +31-(0)26 - 3541 650		Discription Drawing made by :	date 27-04-04 sign. HvD
		dutchi.motors@dutchi.nl www.dutchi.com	

Power is our commodity, the world is our market !



Specification **IEC 60034-1**
 Manufacturer **Dutchi Motors B.V.**
 Motor type **DM1-HE 80G2**
 Rated power **1,10** kW **S1** duty
 Speed **2880** r.p.m
 Voltage **230 / 400** V
 Frequency **50** Hz
 Connection **Δ / Y**
 Amps full load **4,0 / 2,3** A
 Amps no-load(400V) **1,20** A
 Enclosure **IP 55**
 Insulation Class **F (temp. rise B (80 K))**

Max. coolant temp. **40°C**
 Max. altitude **1.000** mtr, above sea level
 Comment **3 x PTC 150°C**
 Cable entries **2 x M25x1,5 + 1 x M20x1,5 (ptc)**

Feature **Cast-iron motor**
 Weight **kg**
 Catalog no. **11622110DH**
 Warranty **12~18 months**

Efficiency class **EFF 1**
 Load data 100% 75% 50% 25%
 Efficiency **83,7 85,0 83,3 75,2** %
 Power factor **0,82 0,78 0,63 0,40**

Sound pressure level (1m) **64,2** dB(A)
 Resistance R20 (open) **5,267** Ω
 Resistance R20 **Y 10,533** Ω

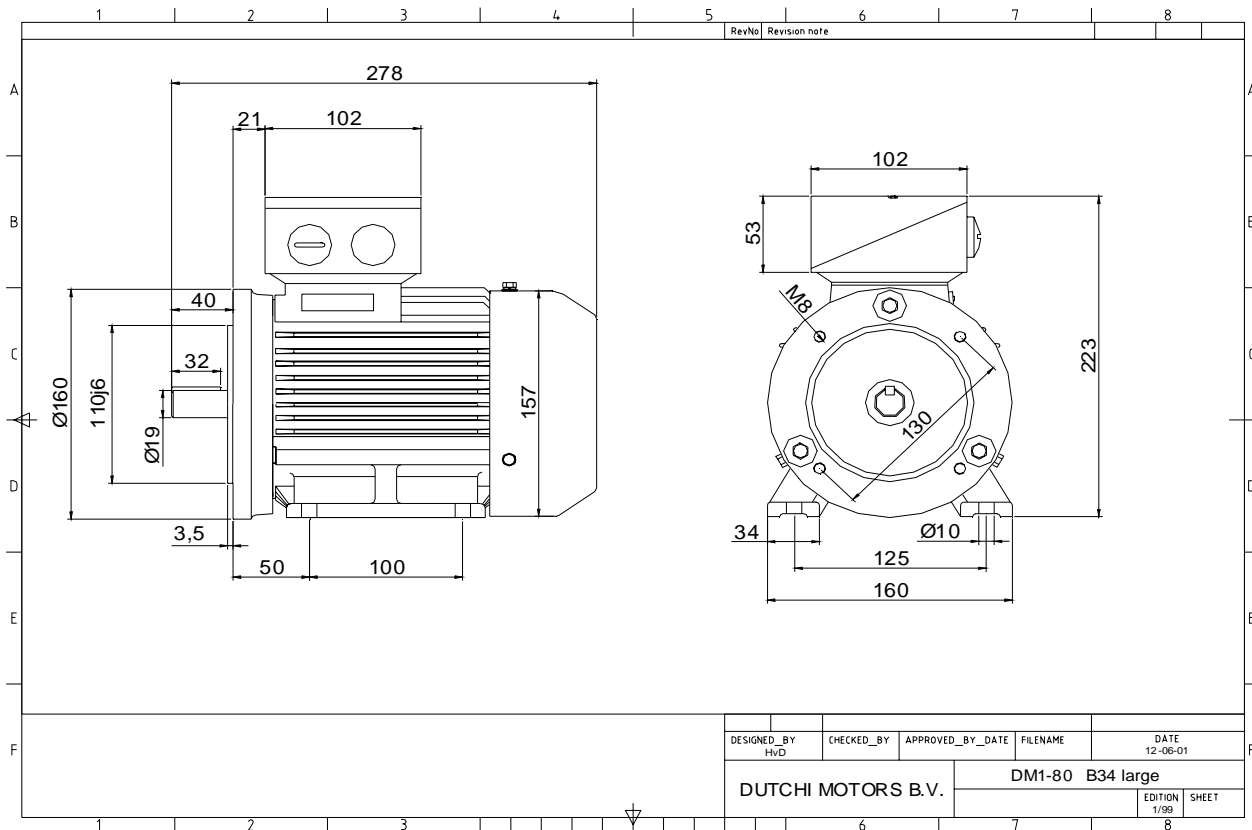
Full load torque **4** Nm
 DOL Starting torque vs FL torque **3,22**
 DOL Pull up torque vs FL torque **2,05**
 DOL Pull out torque vs FL torque **3,58**
 Star-Delta Starting torque vs FL torque **Y - motor**
 Star-Delta Pull up torque vs FL torque **Y - motor**
 Star-Delta Pull out torque vs FL torque **Y - motor**
 DOL Starting current vs FL current **7,47**
 Star Delta Starting current vs FL current **Y - motor**

Rotor Inertia **kgm2**

Bearing DE **6204 - ZZ**
 Bearing NDE **6204 - ZZ**

WI	Change	date	sign.
Dutchi Motors B.V.		Description	date
P.O. Box 5390		Drawing made by :	27-04-04
NL-6802 EJ ARNHEM			
Tel : +31-(0)26 - 3541 600		dutchi.motors@dutchi.nl	
Fax : +31-(0)26 - 3541 650		www.dutchi.com	

Power is our commodity, the world is our market !



Specification **IEC 60034-1**
 Manufacturer **Dutchi Motors B.V.**
 Motor type **DM1-HE 80G2**
 Rated power **1,10** kW **S1** duty
 Speed **2880** r.p.m
 Voltage **230 / 400** V
 Frequency **50** Hz
 Connection **Δ / Y**
 Amps full load **4,0 / 2,3** A
 Amps no-load(400V) **1,20** A
 Enclosure **IP 55**
 Insulation Class **F (temp. rise B (80 K))**

Max. coolant temp. **40°C**
 Max. altitude **1.000** mtr, above sea level
 Comment **3 x PTC 150°C**
 Cable entries **2 x M25x1,5 + 1 x M20x1,5 (ptc)**

Feature **Cast-iron motor**
 Weight **kg**
 Catalog no. **11722110DH**
 Warranty **12~18 months**

Efficiency class **EFF 1**
 Load data 100% 75% 50% 25%
 Efficiency **83,7 85,0 83,3 75,2** %
 Power factor **0,82 0,78 0,63 0,40**

Sound pressure level (1m) **64,2** dB(A)
 Resistance R20 (open) **5,267** Ω
 Resistance R20 **Y 10,533** Ω

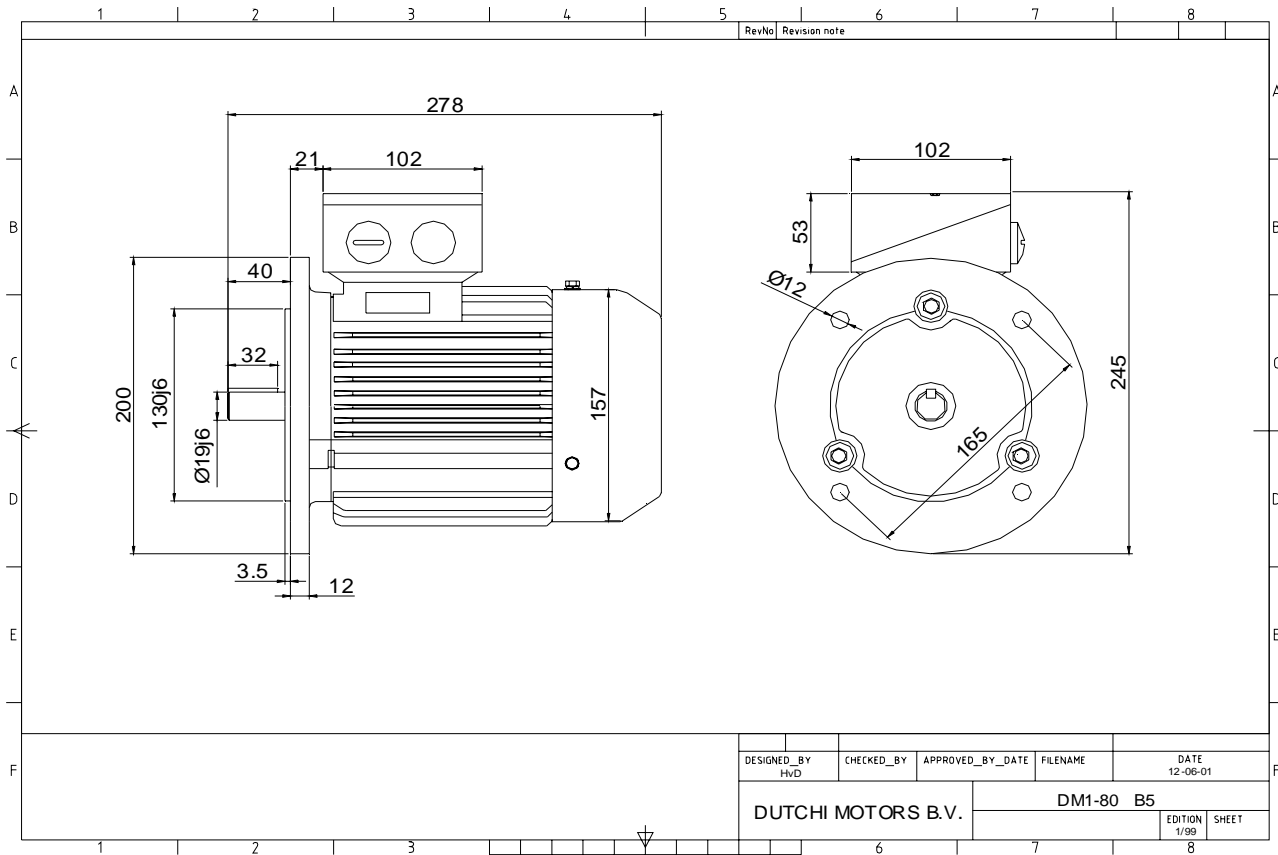
Full load torque **4** Nm
 DOL Starting torque vs FL torque **3,22**
 DOL Pull up torque vs FL torque **2,05**
 DOL Pull out torque vs FL torque **3,58**
 Star-Delta Starting torque vs FL torque **Y - motor**
 Star-Delta Pull up torque vs FL torque **Y - motor**
 Star-Delta Pull out torque vs FL torque **Y - motor**
 DOL Starting current vs FL current **7,47**
 Star Delta Starting current vs FL current **Y - motor**

Rotor Inertia **kgm2**

Bearing DE **6204 - ZZ**
 Bearing NDE **6204 - ZZ**

WI	Change	date	sign.
Dutchi Motors B.V. P.O. Box 5390 NL-6802 EJ ARNHEM Tel : +31-(0)26 - 3541 600 Fax : +31-(0)26 - 3541 650		Description	date
		Drawing made by :	27-04-04
		dutchi.motors@dutchi.nl www.dutchi.com	

Power is our commodity, the world is our market !

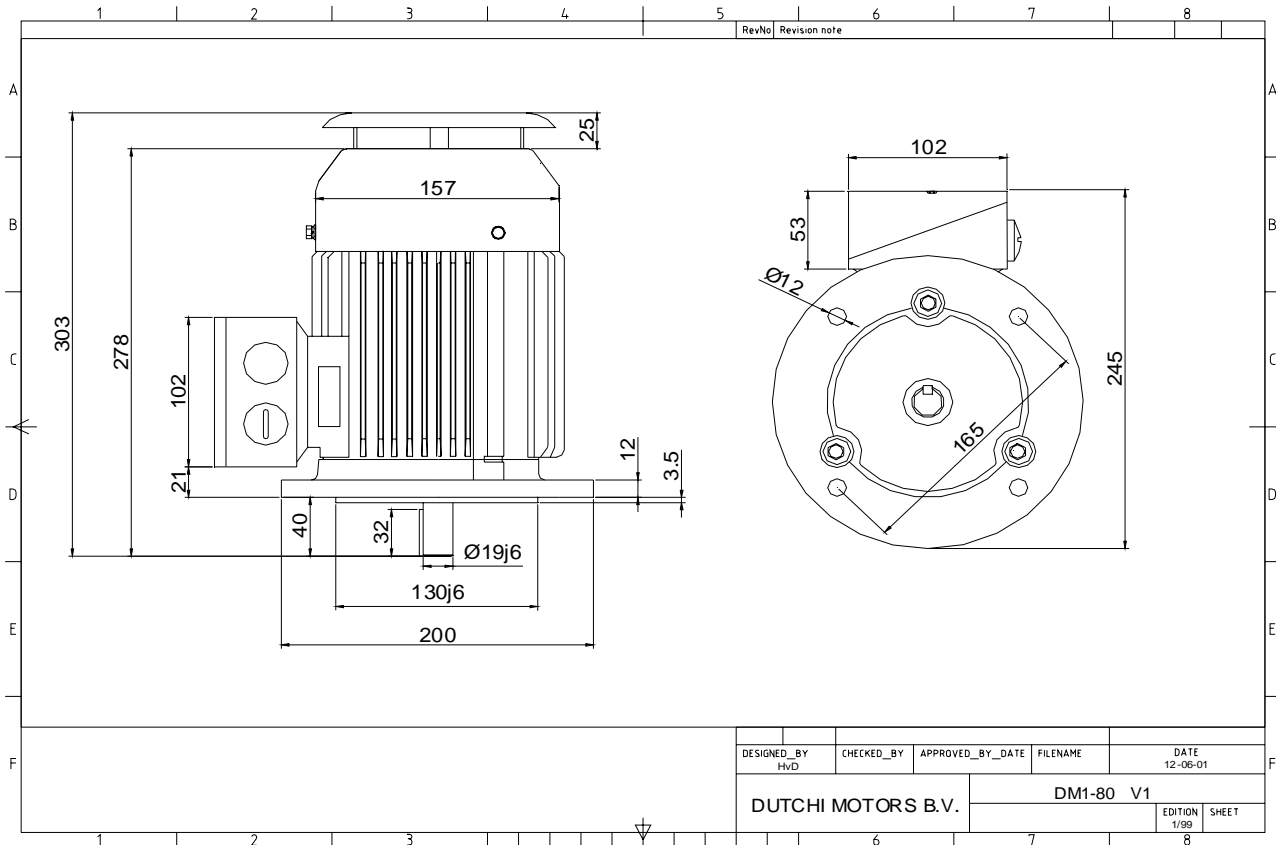


Specification	IEC 60034-1
Manufacturer	Dutchi Motors B.V.
Motor type	DM1-HE 80G2
Rated power	1,10 kW S1 duty
Speed	2880 r.p.m
Voltage	230 / 400 V
Frequency	50 Hz
Connection	Δ / Y
Amps full load	4,0 / 2,3 A
Amps no-load(400V)	1,20 A
Enclosure	IP 55
Insulation Class	F (temp. rise B (80 K))
Max. coolant temp.	40°C
Max. altitude	1.000 mtr, above sea level
Comment	3 x PTC 150°C
Cable entries	2 x M25x1,5 + 1 x M20x1,5 (ptc)
Feature	Cast-iron motor
Weight	kg
Catalog no.	11222110DH
Warranty	12~18 months

Efficiency class	EFF 1			
Load data	100%	75%	50%	25%
Efficiency	83,7	85,0	83,3	75,2 %
Power factor	0,82	0,78	0,63	0,40
Sound pressure level (1m)				64,2 dB(A)
Resistance R20 (open)				5,267 Ω
Resistance R20	Y		10,533 Ω	
Full load torque				4 Nm
DOL Starting torque vs FL torque				3,22
DOL Pull up torque vs FL torque				2,05
DOL Pull out torque vs FL torque				3,58
Star-Delta Starting torque vs FL torque				Y - motor
Star-Delta Pull up torque vs FL torque				Y - motor
Star-Delta Pull out torque vs FL torque				Y - motor
DOL Starting current vs FL current				7,47
Star Delta Starting current vs FL current				Y - motor
Rotor Inertia				kgm ²
Bearing DE				6204 - ZZ
Bearing NDE				6204 - ZZ

WI	Change	date	sign.
Dutchi Motors B.V. P.O. Box 5390 NL-6802 EJ ARNHEM Tel : +31-(0)26 - 3541 600 Fax : +31-(0)26 - 3541 650		Discription Drawing made by :	date 27-04-04 sign. HvD
dutchi.motors@dutchi.nl www.dutchi.com			

Power is our commodity, the world is our market !



Specification **IEC 60034-1**
 Manufacturer **Dutchi Motors B.V.**
 Motor type **DM1-HE 80G2**
 Rated power **1,10** kW **S1** duty
 Speed **2880** r.p.m
 Voltage **230 / 400** V
 Frequency **50** Hz
 Connection **Δ / Y**
 Amps full load **4,0 / 2,3** A
 Amps no-load(400V) **1,20** A
 Enclosure **IP 55**
 Insulation Class **F (temp. rise B (80 K))**

Max. coolant temp. **40°C**
 Max. altitude **1.000** mtr, above sea level
 Comment **3 x PTC 150°C**
 Cable entries **2 x M25x1,5 + 1 x M20x1,5 (ptc)**

Feature **Cast-iron motor**
 Weight **kg**
 Catalog no. **11022110DH**
 Warranty **12~18 months**

Efficiency class **EFF 1**
 Load data 100% 75% 50% 25%
 Efficiency **83,7 85,0 83,3 75,2** %
 Power factor **0,82 0,78 0,63 0,40**

Sound pressure level (1m) **64,2** dB(A)
 Resistance R20 (open) **5,267** Ω
 Resistance R20 **Y 10,533** Ω

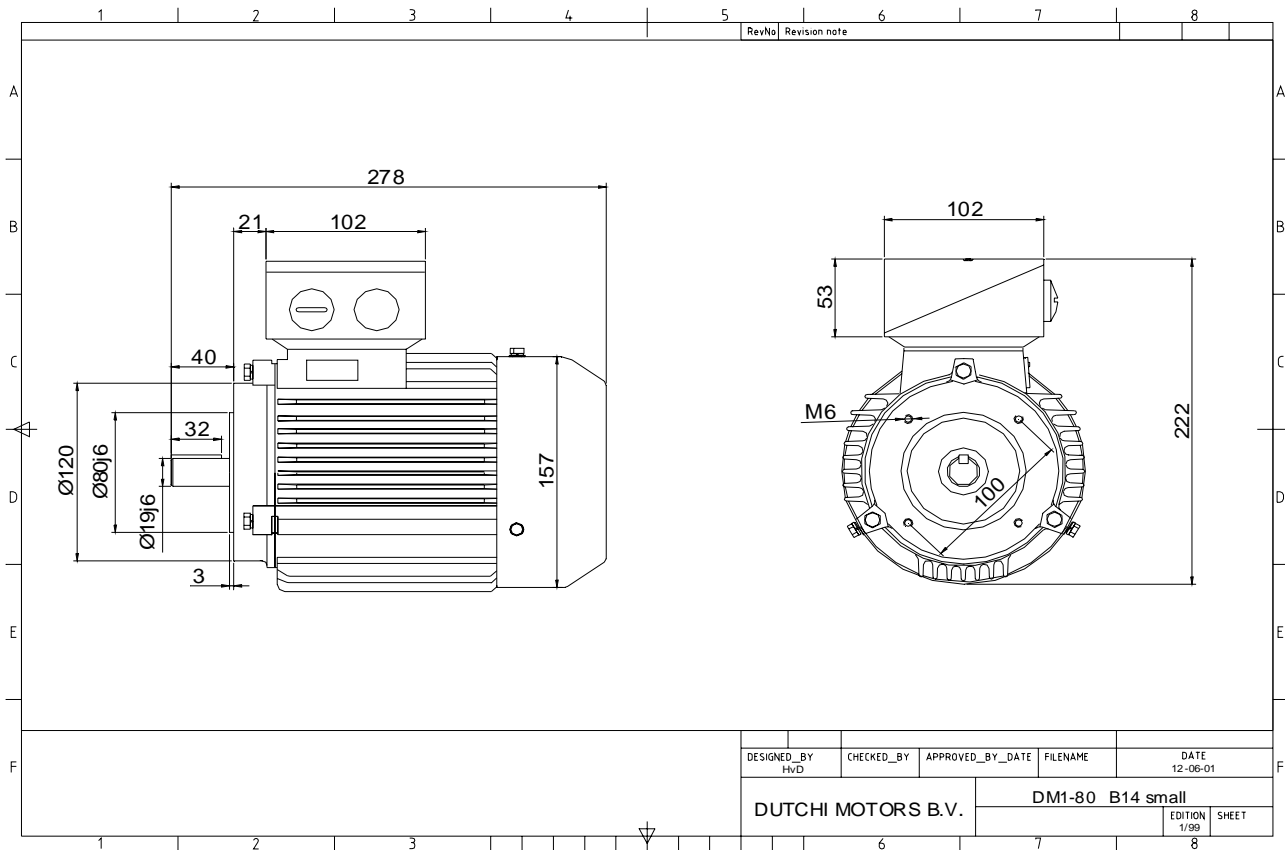
Full load torque **4** Nm
 DOL Starting torque vs FL torque **3,22**
 DOL Pull up torque vs FL torque **2,05**
 DOL Pull out torque vs FL torque **3,58**
 Star-Delta Starting torque vs FL torque **Y - motor**
 Star-Delta Pull up torque vs FL torque **Y - motor**
 Star-Delta Pull out torque vs FL torque **Y - motor**
 DOL Starting current vs FL current **7,47**
 Star Delta Starting current vs FL current **Y - motor**

Rotor Inertia **kgm2**

Bearing DE **6204 - ZZ**
 Bearing NDE **6204 - ZZ**

WI	Change	date	sign.
Dutchi Motors B.V.		Discription	date
P.O. Box 5390		Drawing made by :	27-04-04
NL-6802 EJ ARNHEM			
Tel : +31-(0)26 - 3541 600		dutchi.motors@dutchi.nl	
Fax : +31-(0)26 - 3541 650		www.dutchi.com	

Power is our commodity, the world is our market !



Specification **IEC 60034-1**
 Manufacturer **Dutchi Motors B.V.**
 Motor type **DM1-HE 80G2**
 Rated power **1,10** kW **S1** duty
 Speed **2880** r.p.m
 Voltage **230** / **400** V
 Frequency **50** Hz
 Connection **Δ** / **Y**
 Amps full load **4,0** / **2,3** A
 Amps no-load(400V) **1,20** A
 Enclosure **IP 55**
 Insulation Class **F (temp. rise B (80 K))**

Max. coolant temp. **40°C**
 Max. altitude **1.000** mtr, above sea level
 Comment **3 x PTC 150°C**
 Cable entries **2 x M25x1,5 + 1 x M20x1,5 (ptc)**

Feature **Cast-iron motor**
 Weight **kg**
 Catalog no. **11322110DH**
 Warranty **12~18 months**

Efficiency class **EFF 1**
 Load data 100% 75% 50% 25%
 Efficiency **83,7 85,0 83,3 75,2** %
 Power factor **0,82 0,78 0,63 0,40**

Sound pressure level (1m) **64,2** dB(A)
 Resistance R20 (open) **5,267** Ω
 Resistance R20 **Y 10,533** Ω

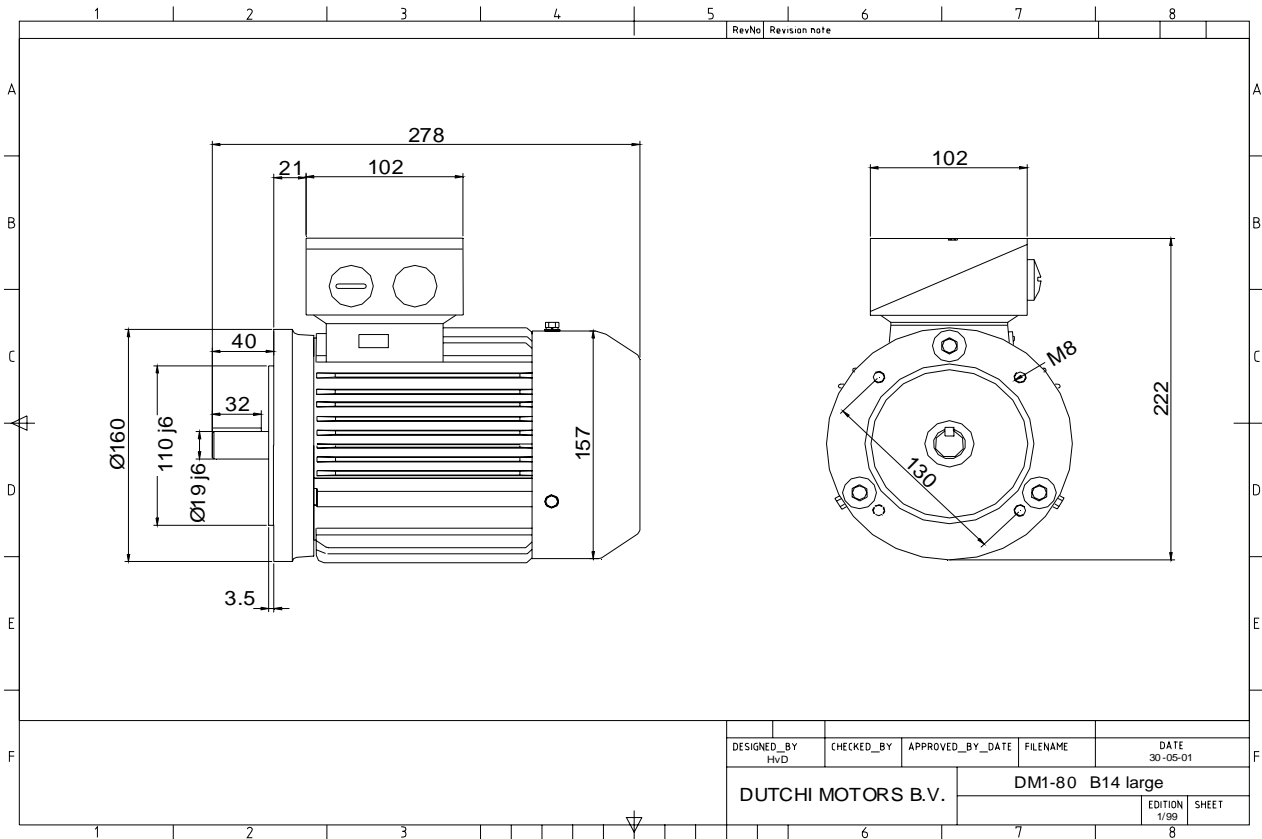
Full load torque **4** Nm
 DOL Starting torque vs FL torque **3,22**
 DOL Pull up torque vs FL torque **2,05**
 DOL Pull out torque vs FL torque **3,58**
 Star-Delta Starting torque vs FL torque **Y - motor**
 Star-Delta Pull up torque vs FL torque **Y - motor**
 Star-Delta Pull out torque vs FL torque **Y - motor**
 DOL Starting current vs FL current **7,47**
 Star Delta Starting current vs FL current **Y - motor**

Rotor Inertia **kgm2**

Bearing DE **6204 - ZZ**
 Bearing NDE **6204 - ZZ**

WI	Change	date	sign.
Dutchi Motors B.V. P.O. Box 5390 NL-6802 EJ ARNHEM Tel : +31-(0)26 - 3541 600 Fax : +31-(0)26 - 3541 650		Description	date
		Drawing made by :	27-04-04
		dutchi.motors@dutchi.nl www.dutchi.com	

Power is our commodity, the world is our market !



Specification **IEC 60034-1**
 Manufacturer **Dutchi Motors B.V.**
 Motor type **DM1-HE 80G2**
 Rated power **1,10** kW **S1** duty
 Speed **2880** r.p.m
 Voltage **230** / **400** V
 Frequency **50** Hz
 Connection **Δ** / **Y**
 Amps full load **4,0** / **2,3** A
 Amps no-load(400V) **1,20** A
 Enclosure **IP 55**
 Insulation Class **F (temp. rise B (80 K))**

Max. coolant temp. **40°C**
 Max. altitude **1.000** mtr, above sea level
 Comment **3 x PTC 150°C**
 Cable entries **2 x M25x1,5 + 1 x M20x1,5 (ptc)**

Feature **Cast-iron motor**
 Weight **kg**
 Catalog no. **11422110DH**
 Warranty **12~18 months**

Efficiency class **EFF 1**
 Load data 100% 75% 50% 25%
 Efficiency **83,7 85,0 83,3 75,2** %
 Power factor **0,82 0,78 0,63 0,40**

Sound pressure level (1m) **64,2** dB(A)
 Resistance R20 (open) **5,267** Ω
 Resistance R20 **Y 10,533** Ω

Full load torque **4** Nm
 DOL Starting torque vs FL torque **3,22**
 DOL Pull up torque vs FL torque **2,05**
 DOL Pull out torque vs FL torque **3,58**
 Star-Delta Starting torque vs FL torque **Y - motor**
 Star-Delta Pull up torque vs FL torque **Y - motor**
 Star-Delta Pull out torque vs FL torque **Y - motor**
 DOL Starting current vs FL current **7,47**
 Star Delta Starting current vs FL current **Y - motor**
 Rotor Inertia **kgm2**

Bearing DE **6204 - ZZ**
 Bearing NDE **6204 - ZZ**

WI	Change	date	sign.
Dutchi Motors B.V. P.O. Box 5390 NL-6802 EJ ARNHEM Tel : +31-(0)26 - 3541 600 Fax : +31-(0)26 - 3541 650		Discription	date
		Drawing made by :	27-04-04
		dutchi.motors@dutchi.nl www.dutchi.com	