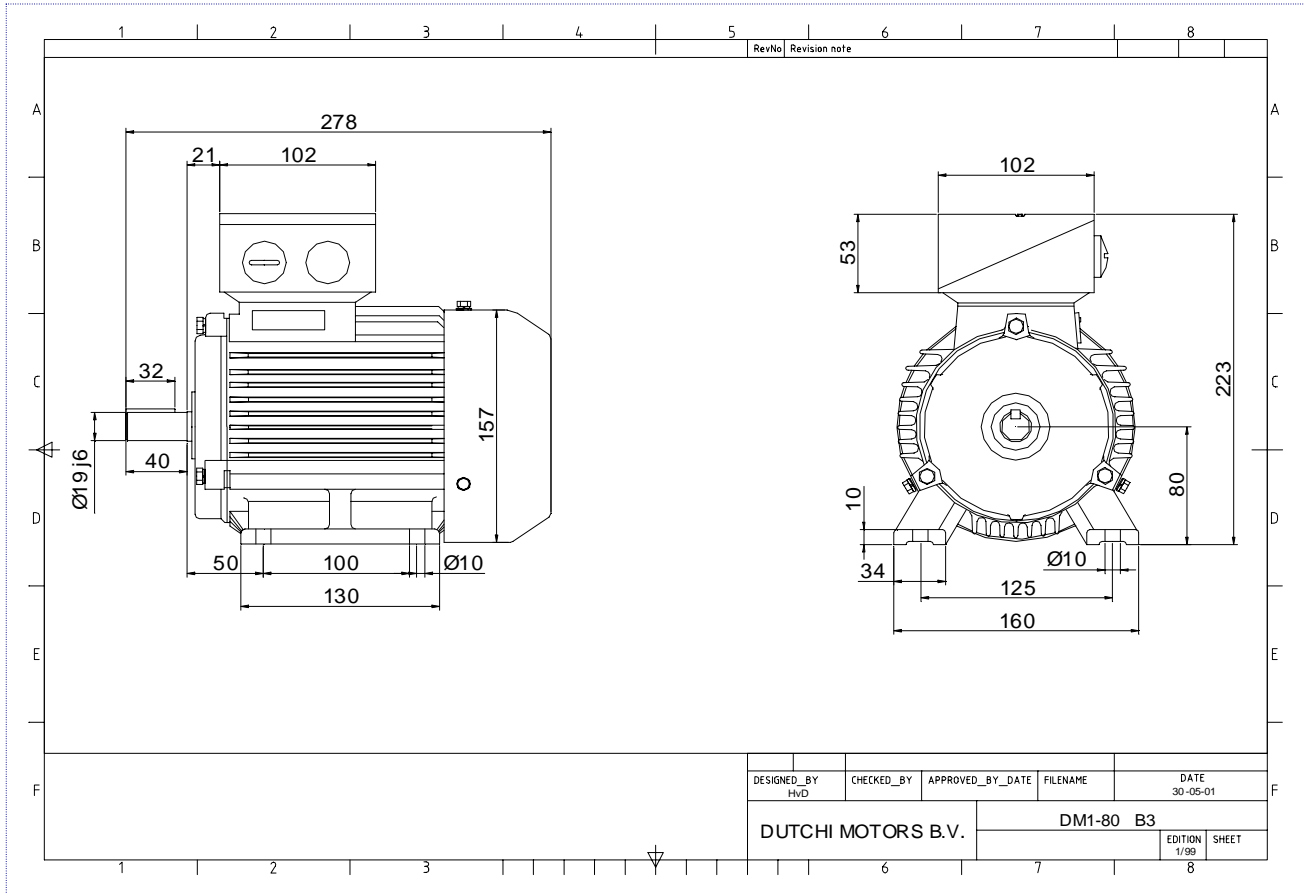


Power is our commodity, the world is our market !



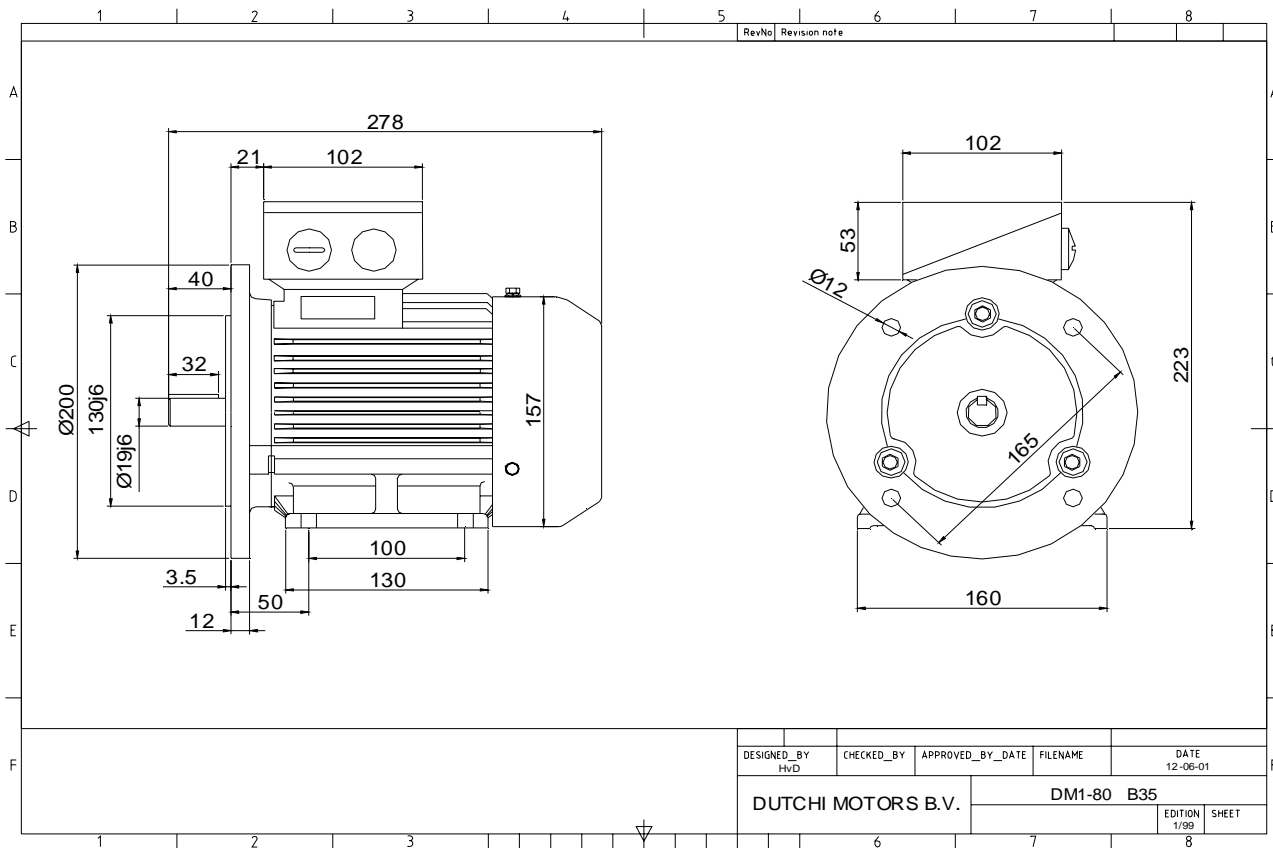
Specification	IEC 60034-1
Manufacturer	Dutchi Motors B.V.
Motor type	DM1- 80 G2
Rated power	1,1 kW S1 duty
Speed	2880 r.p.m
Voltage	230 / 400 V
Frequency	50 Hz
Connection	Δ / Y
Amps full load	4,17 / 2,41 A
Amps no-load(400V)	1,40 A
Enclosure	IP 55
Insulation Class	F (temp. rise B (80 K))
Max. coolant temp.	40°C
Max. altitude	1.000 mtr, above sea level
Comment	3 x PTC 150°C
Cable entries	2 x M25x1,5 + 1 x M20x1,5 (ptc)
Feature	Cast-iron motor
Weight	17,0 kg
Catalog no.	11122110D
Warranty	12~18 months

Efficiency class	EFF 2			
Load data	100%	75%	50%	25%
Efficiency	79,5	78,6	74,4	62,9 %
Power factor	0,83	0,76	0,62	0,45
Sound pressure level (1m)				66,9 dB(A)
Resistance R20 (open)				5,65 Ω
Resistance R20	Y		11,29 Ω	
Full load torque				3,65 Nm
DOL Starting torque vs FL torque				2,72
DOL Pull up torque vs FL torque				1,78
DOL Pull out torque vs FL torque				3,48
Star-Delta Starting torque vs FL torque				Y - motor
Star-Delta Pull up torque vs FL torque				Y - motor
Star-Delta Pull out torque vs FL torque				Y - motor
DOL Starting current vs FL current				7,13
Star Delta Starting current vs FL current				Y - motor
Rotor Inertia				0,0009 kgm ²
Bearing DE				6204 - ZZ
Bearing NDE				6204 - ZZ

Extras / Options :

WI	Change	date	sign.
Dutchi Motors B.V. P.O. Box 5390 NL-6802 EJ ARNHEM Tel : +31-(0)26 - 3541 600 Fax : +31-(0)26 - 3541 650		Discription	date
		Drawing made by :	19-04-04
		dutchi.motors@dutchi.nl www.dutchi.com	

Power is our commodity, the world is our market !



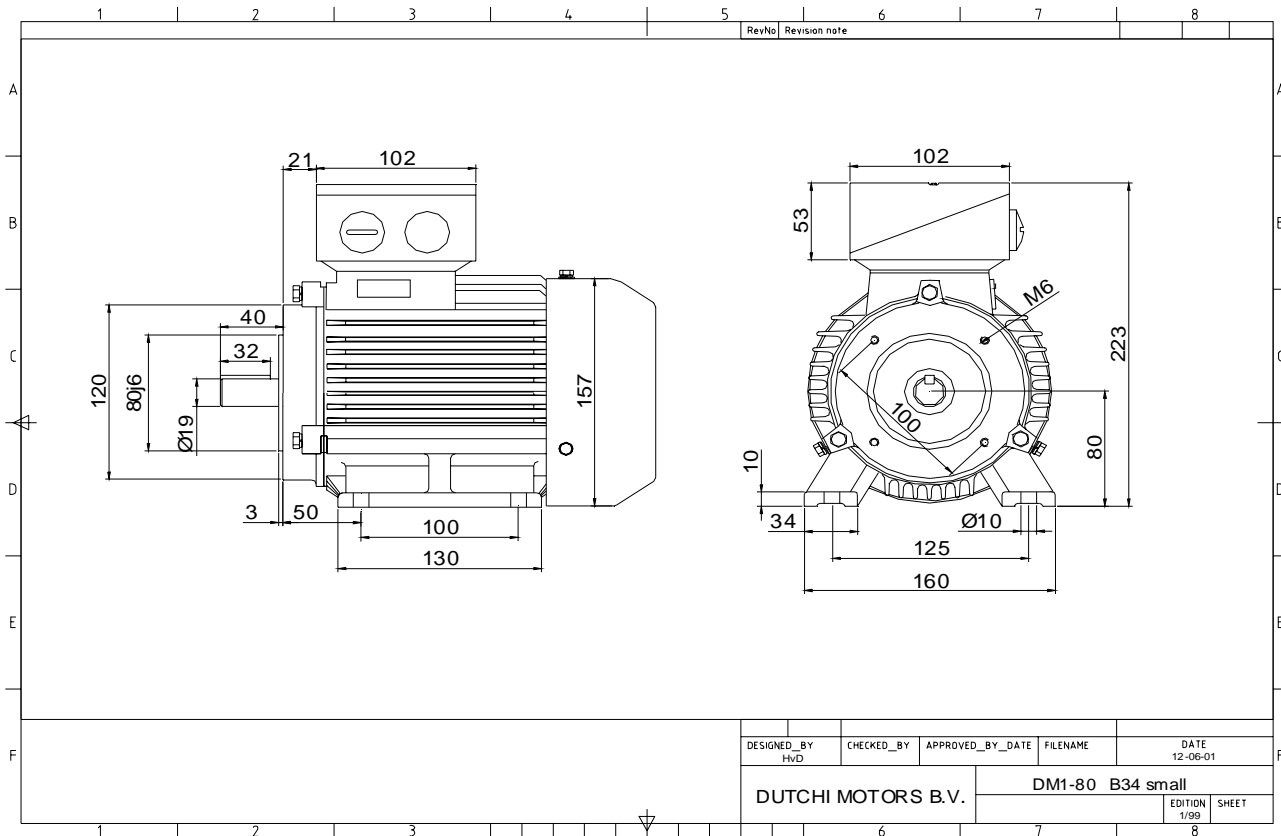
Specification	IEC 60034-1
Manufacturer	Dutchi Motors B.V.
Motor type	DM1- 80 G2
Rated power	1,1 kW S1 duty
Speed	2880 r.p.m
Voltage	230 / 400 V
Frequency	50 Hz
Connection	Δ / Y
Amps full load	4,17 / 2,41 A
Amps no-load(400V)	1,40 A
Enclosure	IP 55
Insulation Class	F (temp. rise B (80 K))
Max. coolant temp.	40°C
Max. altitude	1.000 mtr, above sea level
Comment	3 x PTC 150°C
Cable entries	2 x M25x1,5 + 1 x M20x1,5 (ptc)
Feature	Cast-iron motor
Weight	17,0 kg
Catalog no.	11522110D
Warranty	12~18 months

Efficiency class	EFF 2			
Load data	100%	75%	50%	25%
Efficiency	79,5	78,6	74,4	62,9 %
Power factor	0,83	0,76	0,62	0,45
Sound pressure level (1m)				66,9 dB(A)
Resistance R20 (open)				5,65 Ω
Resistance R20	Y		11,29	Ω
Full load torque				3,65 Nm
DOL Starting torque vs FL torque				2,72
DOL Pull up torque vs FL torque				1,78
DOL Pull out torque vs FL torque				3,48
Star-Delta Starting torque vs FL torque				Y - motor
Star-Delta Pull up torque vs FL torque				Y - motor
Star-Delta Pull out torque vs FL torque				Y - motor
DOL Starting current vs FL current				7,13
Star Delta Starting current vs FL current				Y - motor
Rotor Inertia				0,0009 kgm ²
Bearing DE				6204 - ZZ
Bearing NDE				6204 - ZZ

Extras / Options :

WI	Change	date	sign.
Dutchi Motors B.V. P.O. Box 5390 NL-6802 EJ ARNHEM Tel : +31-(0)26 - 3541 600 Fax : +31-(0)26 - 3541 650		Discription Drawing made by :	date 19-04-04
dutchi.motors@dutchi.nl www.dutchi.com		sign. HvD	

Power is our commodity, the world is our market !



Specification **IEC 60034-1**
 Manufacturer **Dutchi Motors B.V.**
 Motor type **DM1- 80 G2**
 Rated power **1,1** kW **S1** duty
 Speed **2880** r.p.m
 Voltage **230 / 400** V
 Frequency **50** Hz
 Connection **Δ / Y**
 Amps full load **4,17 / 2,41** A
 Amps no-load(400V) **1,40** A
 Enclosure **IP 55**
 Insulation Class **F (temp. rise B (80 K))**

Max. coolant temp. **40°C**
 Max. altitude **1.000** mtr, above sea level
 Comment **3 x PTC 150°C**
 Cable entries **2 x M25x1,5 + 1 x M20x1,5 (ptc)**

Feature **Cast-iron motor**
 Weight **17,0** kg
 Catalog no. **11622110D**
 Warranty **12~18 months**

Efficiency class **EFF 2**
 Load data 100% 75% 50% 25%
 Efficiency **79,5 78,6 74,4 62,9** %
 Power factor **0,83 0,76 0,62 0,45**

Sound pressure level (1m) **66,9** dB(A)
 Resistance R20 (open) **5,65** Ω
 Resistance R20 **Y 11,29** Ω

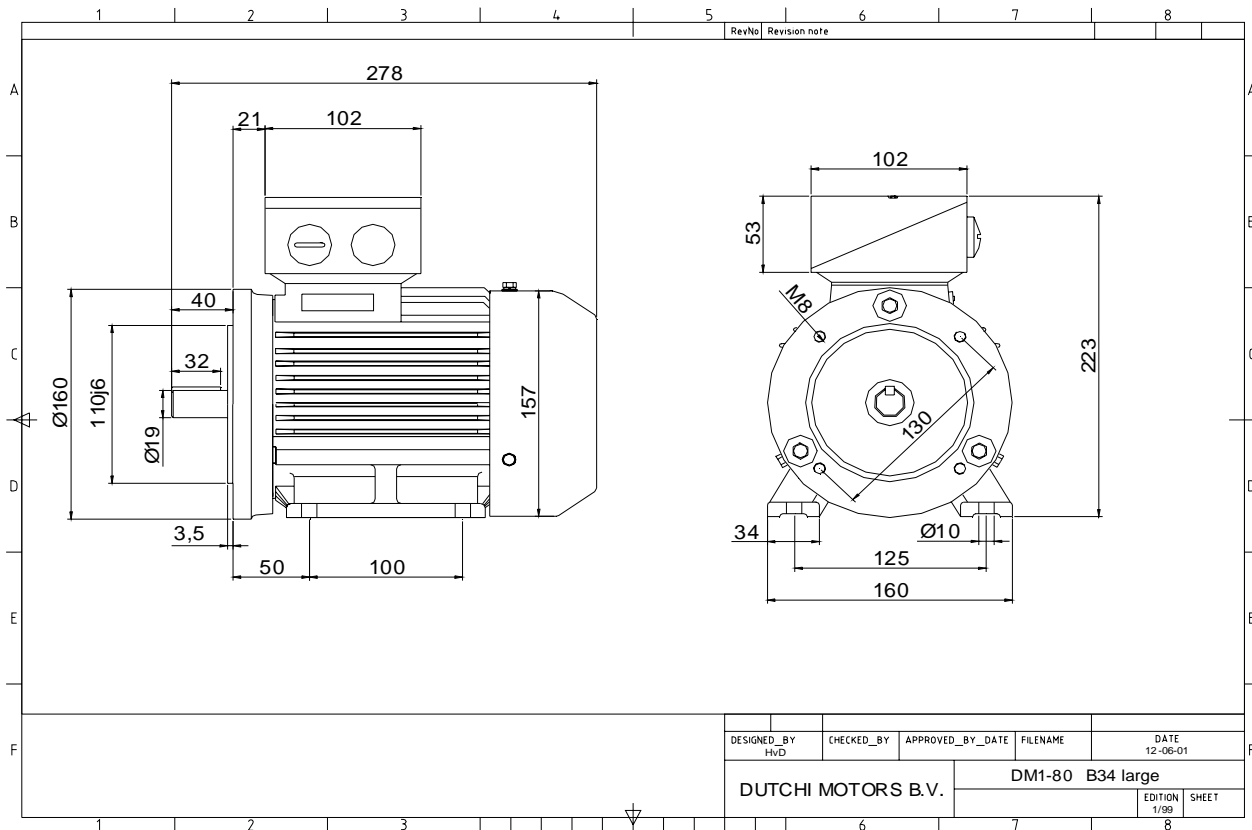
Full load torque **3,65** Nm
 DOL Starting torque vs FL torque **2,72**
 DOL Pull up torque vs FL torque **1,78**
 DOL Pull out torque vs FL torque **3,48**
 Star-Delta Starting torque vs FL torque **Y - motor**
 Star-Delta Pull up torque vs FL torque **Y - motor**
 Star-Delta Pull out torque vs FL torque **Y - motor**
 DOL Starting current vs FL current **7,13**
 Star Delta Starting current vs FL current **Y - motor**
 Rotor Inertia **0,0009** kgm2

Bearing DE **6204 - ZZ**
 Bearing NDE **6204 - ZZ**

Extras / Options :

WI	Change	date	sign.
Dutchi Motors B.V.		Description	date
P.O. Box 5390		Drawing made by :	19-04-04
NL-6802 EJ ARNHEM			
Tel : +31-(0)26 - 3541 600		dutchi.motors@dutchi.nl	
Fax : +31-(0)26 - 3541 650		www.dutchi.com	

Power is our commodity, the world is our market !



Specification **IEC 60034-1**
 Manufacturer **Dutchi Motors B.V.**
 Motor type **DM1- 80 G2**
 Rated power **1,1** kW **S1** duty
 Speed **2880** r.p.m
 Voltage **230 / 400** V
 Frequency **50** Hz
 Connection **Δ / Y**
 Amps full load **4,17 / 2,41** A
 Amps no-load(400V) **1,40** A
 Enclosure **IP 55**
 Insulation Class **F (temp. rise B (80 K))**

Max. coolant temp. **40°C**
 Max. altitude **1.000** mtr, above sea level
 Comment **3 x PTC 150°C**
 Cable entries **2 x M25x1,5 + 1 x M20x1,5 (ptc)**

Feature **Cast-iron motor**
 Weight **17,0** kg
 Catalog no. **11722110D**
 Warranty **12~18 months**

Efficiency class **EFF 2**
 Load data 100% 75% 50% 25%
 Efficiency **79,5 78,6 74,4 62,9** %
 Power factor **0,83 0,76 0,62 0,45**

Sound pressure level (1m) **66,9** dB(A)
 Resistance R20 (open) **5,65** Ω
 Resistance R20 **Y 11,29** Ω

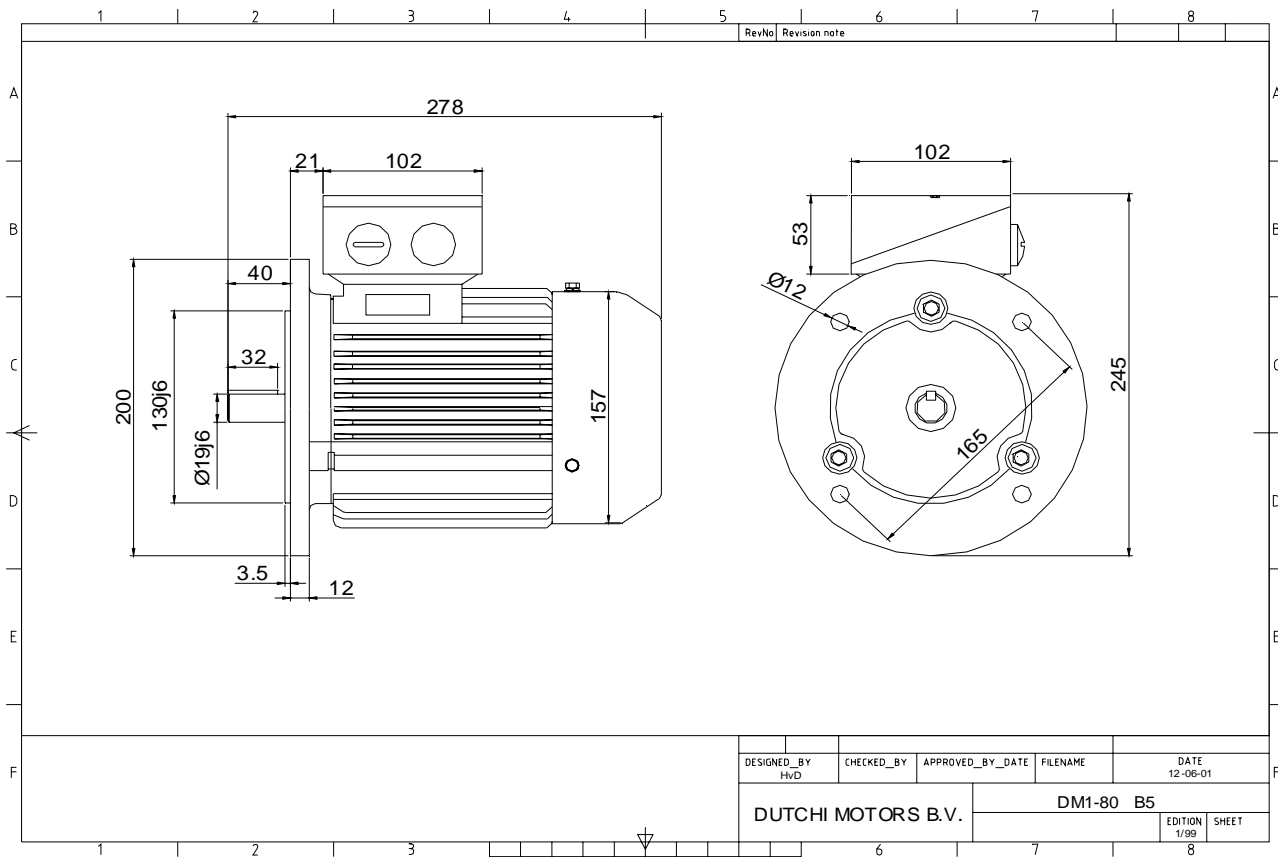
Full load torque **3,65** Nm
 DOL Starting torque vs FL torque **2,72**
 DOL Pull up torque vs FL torque **1,78**
 DOL Pull out torque vs FL torque **3,48**
 Star-Delta Starting torque vs FL torque **Y - motor**
 Star-Delta Pull up torque vs FL torque **Y - motor**
 Star-Delta Pull out torque vs FL torque **Y - motor**
 DOL Starting current vs FL current **7,13**
 Star Delta Starting current vs FL current **Y - motor**
 Rotor Inertia **0,0009** kgm²

Bearing DE **6204 - ZZ**
 Bearing NDE **6204 - ZZ**

Extras / Options :

WI	Change	date	sign.
Dutchi Motors B.V.		Description	date
P.O. Box 5390		Drawing made by :	19-04-04
NL-6802 EJ ARNHEM			
Tel : +31-(0)26 - 3541 600		dutchi.motors@dutchi.nl	
Fax : +31-(0)26 - 3541 650		www.dutchi.com	

Power is our commodity, the world is our market !



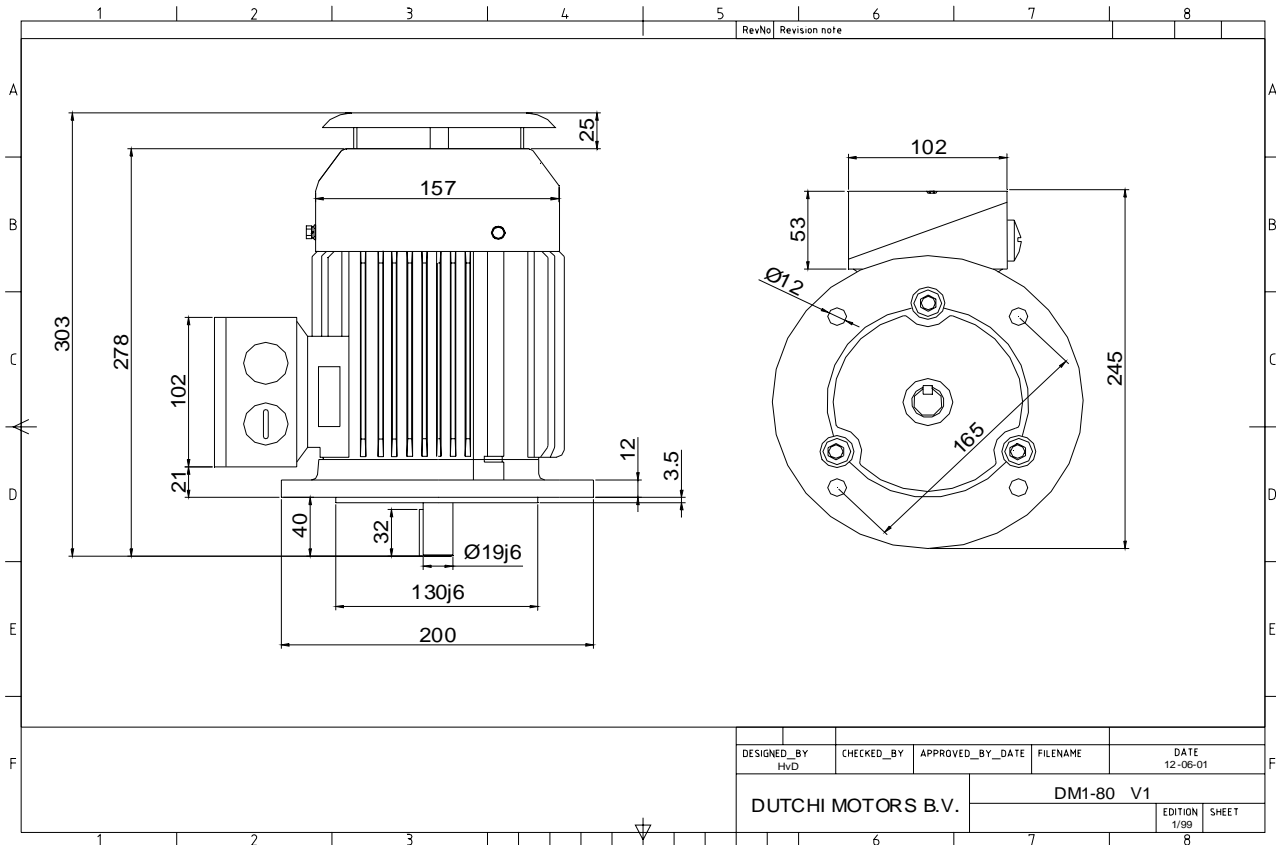
Specification	IEC 60034-1
Manufacturer	Dutchi Motors B.V.
Motor type	DM1- 80 G2
Rated power	1,1 kW S1 duty
Speed	2880 r.p.m
Voltage	230 / 400 V
Frequency	50 Hz
Connection	Δ / Y
Amps full load	4,17 / 2,41 A
Amps no-load(400V)	1,40 A
Enclosure	IP 55
Insulation Class	F (temp. rise B (80 K))
Max. coolant temp.	40°C
Max. altitude	1.000 mtr, above sea level
Comment	3 x PTC 150°C
Cable entries	2 x M25x1,5 + 1 x M20x1,5 (ptc)
Feature	Cast-iron motor
Weight	17,0 kg
Catalog no.	11222110D
Warranty	12~18 months

Efficiency class	EFF 2			
Load data	100%	75%	50%	25%
Efficiency	79,5	78,6	74,4	62,9 %
Power factor	0,83	0,76	0,62	0,45
Sound pressure level (1m)				66,9 dB(A)
Resistance R20 (open)				5,65 Ω
Resistance R20	Y		11,29	Ω
Full load torque				3,65 Nm
DOL Starting torque vs FL torque				2,72
DOL Pull up torque vs FL torque				1,78
DOL Pull out torque vs FL torque				3,48
Star-Delta Starting torque vs FL torque				Y - motor
Star-Delta Pull up torque vs FL torque				Y - motor
Star-Delta Pull out torque vs FL torque				Y - motor
DOL Starting current vs FL current				7,13
Star Delta Starting current vs FL current				Y - motor
Rotor Inertia				0,0009 kgm ²
Bearing DE				6204 - ZZ
Bearing NDE				6204 - ZZ

Extras / Options :

WI	Change	date	sign.
Dutchi Motors B.V. P.O. Box 5390 NL-6802 EJ ARNHEM Tel : +31-(0)26 - 3541 600 Fax : +31-(0)26 - 3541 650		Description	date
		Drawing made by :	19-04-04
		dutchi.motors@dutchi.nl www.dutchi.com	

Power is our commodity, the world is our market !



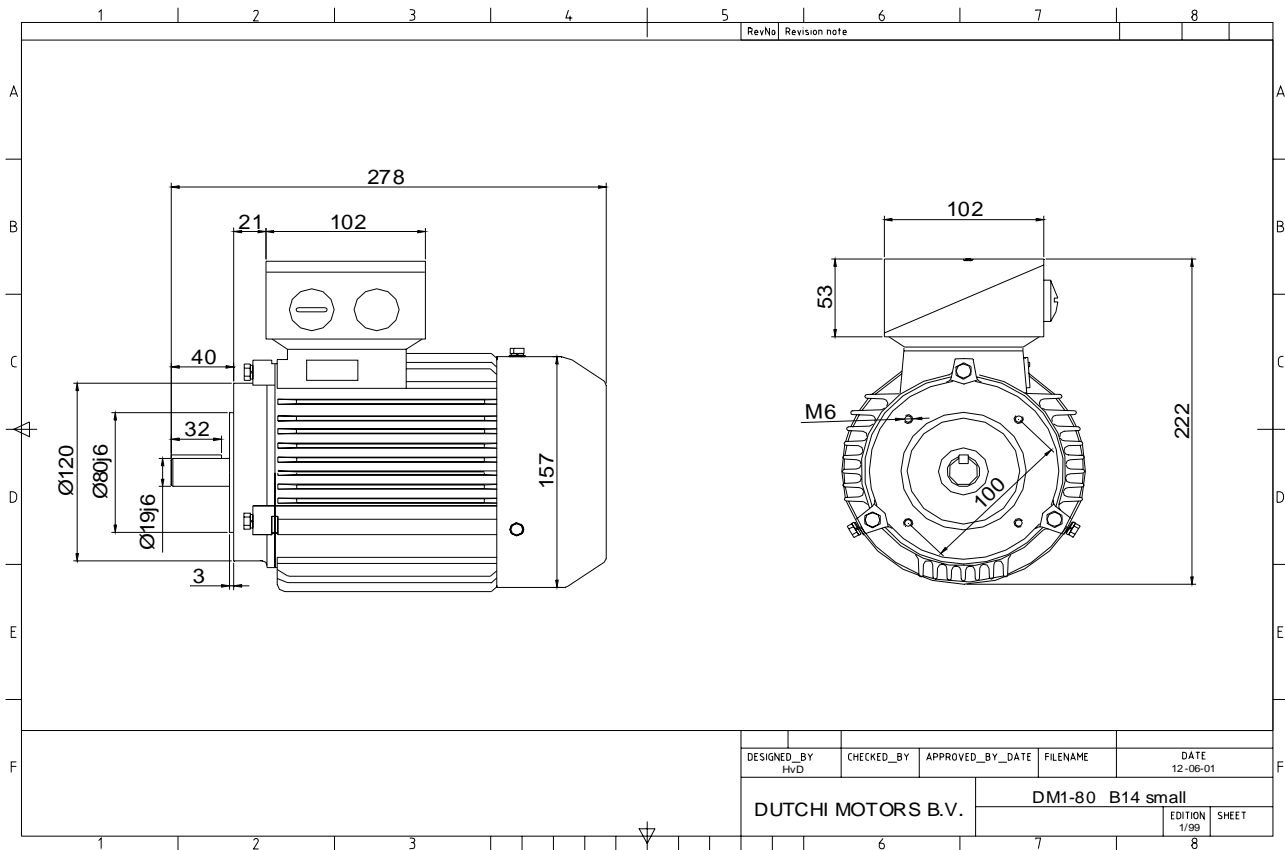
Specification	IEC 60034-1
Manufacturer	Dutchi Motors B.V.
Motor type	DM1- 80 G2
Rated power	1,1 kW S1 duty
Speed	2880 r.p.m
Voltage	230 / 400 V
Frequency	50 Hz
Connection	Δ / Y
Amps full load	4,17 / 2,41 A
Amps no-load(400V)	1,40 A
Enclosure	IP 55
Insulation Class	F (temp. rise B (80 K))
Max. coolant temp.	40°C
Max. altitude	1.000 mtr, above sea level
Comment	3 x PTC 150°C
Cable entries	2 x M25x1,5 + 1 x M20x1,5 (ptc)
Feature	Cast-iron motor
Weight	17,0 kg
Catalog no.	11022110D
Warranty	12~18 months

Efficiency class	EFF 2			
Load data	100%	75%	50%	25%
Efficiency	79,5	78,6	74,4	62,9 %
Power factor	0,83	0,76	0,62	0,45
Sound pressure level (1m)				66,9 dB(A)
Resistance R20 (open)				5,65 Ω
Resistance R20	Y			11,29 Ω
Full load torque				3,65 Nm
DOL Starting torque vs FL torque				2,72
DOL Pull up torque vs FL torque				1,78
DOL Pull out torque vs FL torque				3,48
Star-Delta Starting torque vs FL torque				Y - motor
Star-Delta Pull up torque vs FL torque				Y - motor
Star-Delta Pull out torque vs FL torque				Y - motor
DOL Starting current vs FL current				7,13
Star Delta Starting current vs FL current				Y - motor
Rotor Inertia				0,0009 kgm ²
Bearing DE				6204 - ZZ
Bearing NDE				6204 - ZZ

Extras / Options :

WI	Change	date	sign.
Dutchi Motors B.V. P.O. Box 5390 NL-6802 EJ ARNHEM Tel : +31-(0)26 - 3541 600 Fax : +31-(0)26 - 3541 650		Description	date
		Drawing made by :	19-04-04
		dutchi.motors@dutchi.nl www.dutchi.com	

Power is our commodity, the world is our market !



DESIGNED_BY HvD	CHECKED_BY	APPROVED_BY_DATE	FILENAME	DATE 12-06-01
DUTCHI MOTORS B.V.			DM1-80 B14 small	
			EDITION 1/99	SHEET

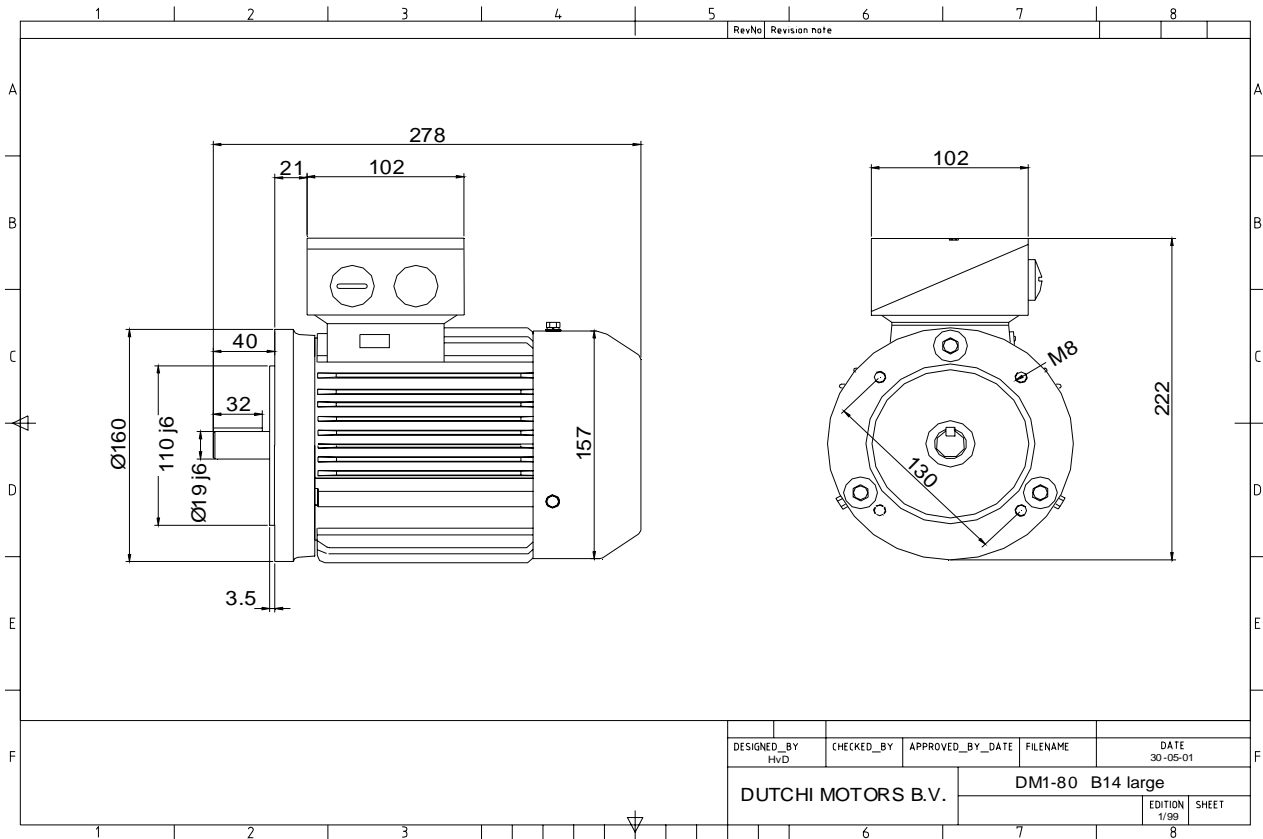
Specification	IEC 60034-1
Manufacturer	Dutchi Motors B.V.
Motor type	DM1- 80 G2
Rated power	1,1 kW S1 duty
Speed	2880 r.p.m
Voltage	230 / 400 V
Frequency	50 Hz
Connection	Δ / Y
Amps full load	4,17 / 2,41 A
Amps no-load(400V)	1,40 A
Enclosure	IP 55
Insulation Class	F (temp. rise B (80 K))
Max. coolant temp.	40°C
Max. altitude	1.000 mtr, above sea level
Comment	3 x PTC 150°C
Cable entries	2 x M25x1,5 + 1 x M20x1,5 (ptc)
Feature	Cast-iron motor
Weight	17,0 kg
Catalog no.	11322110D
Warranty	12~18 months

Efficiency class	EFF 2			
Load data	100%	75%	50%	25%
Efficiency	79,5	78,6	74,4	62,9 %
Power factor	0,83	0,76	0,62	0,45
Sound pressure level (1m)				66,9 dB(A)
Resistance R20 (open)				5,65 Ω
Resistance R20	Y		11,29	Ω
Full load torque				3,65 Nm
DOL Starting torque vs FL torque				2,72
DOL Pull up torque vs FL torque				1,78
DOL Pull out torque vs FL torque				3,48
Star-Delta Starting torque vs FL torque				Y - motor
Star-Delta Pull up torque vs FL torque				Y - motor
Star-Delta Pull out torque vs FL torque				Y - motor
DOL Starting current vs FL current				7,13
Star Delta Starting current vs FL current				Y - motor
Rotor Inertia				0,0009 kgm ²
Bearing DE				6204 - ZZ
Bearing NDE				6204 - ZZ

Extras / Options :

WI	Change	date	sign.
Dutchi Motors B.V. P.O. Box 5390 NL-6802 EJ ARNHEM Tel : +31-(0)26 - 3541 600 Fax : +31-(0)26 - 3541 650		Discription Drawing made by :	date 19-04-04 sign. HvD
		dutchi.motors@dutchi.nl www.dutchi.com	

Power is our commodity, the world is our market !



Specification **IEC 60034-1**
 Manufacturer **Dutchi Motors B.V.**
 Motor type **DM1- 80 G2**
 Rated power **1,1** kW **S1** duty
 Speed **2880** r.p.m
 Voltage **230 / 400** V
 Frequency **50** Hz
 Connection **Δ / Y**
 Amps full load **4,17 / 2,41** A
 Amps no-load(400V) **1,40** A
 Enclosure **IP 55**
 Insulation Class **F (temp. rise B (80 K))**

Max. coolant temp. **40°C**
 Max. altitude **1.000** mtr, above sea level
 Comment **3 x PTC 150°C**
 Cable entries **2 x M25x1,5 + 1 x M20x1,5 (ptc)**

Feature **Cast-iron motor**
 Weight **17,0** kg
 Catalog no. **11422110D**
 Warranty **12~18 months**

Efficiency class **EFF 2**
 Load data 100% 75% 50% 25%
 Efficiency **79,5 78,6 74,4 62,9** %
 Power factor **0,83 0,76 0,62 0,45**

Sound pressure level (1m) **66,9** dB(A)
 Resistance R20 (open) **5,65** Ω
 Resistance R20 **Y 11,29** Ω

Full load torque **3,65** Nm
 DOL Starting torque vs FL torque **2,72**
 DOL Pull up torque vs FL torque **1,78**
 DOL Pull out torque vs FL torque **3,48**
 Star-Delta Starting torque vs FL torque **Y - motor**
 Star-Delta Pull up torque vs FL torque **Y - motor**
 Star-Delta Pull out torque vs FL torque **Y - motor**
 DOL Starting current vs FL current **7,13**
 Star Delta Starting current vs FL current **Y - motor**
 Rotor Inertia **0,0009** kgm2

Bearing DE **6204 - ZZ**
 Bearing NDE **6204 - ZZ**

Extras / Options :

WI	Change	date	sign.
Dutchi Motors B.V.		Description	date
P.O. Box 5390		Drawing made by :	19-04-04
NL-6802 EJ ARNHEM			
Tel : +31-(0)26 - 3541 600		dutchi.motors@dutchi.nl	
Fax : +31-(0)26 - 3541 650		www.dutchi.com	