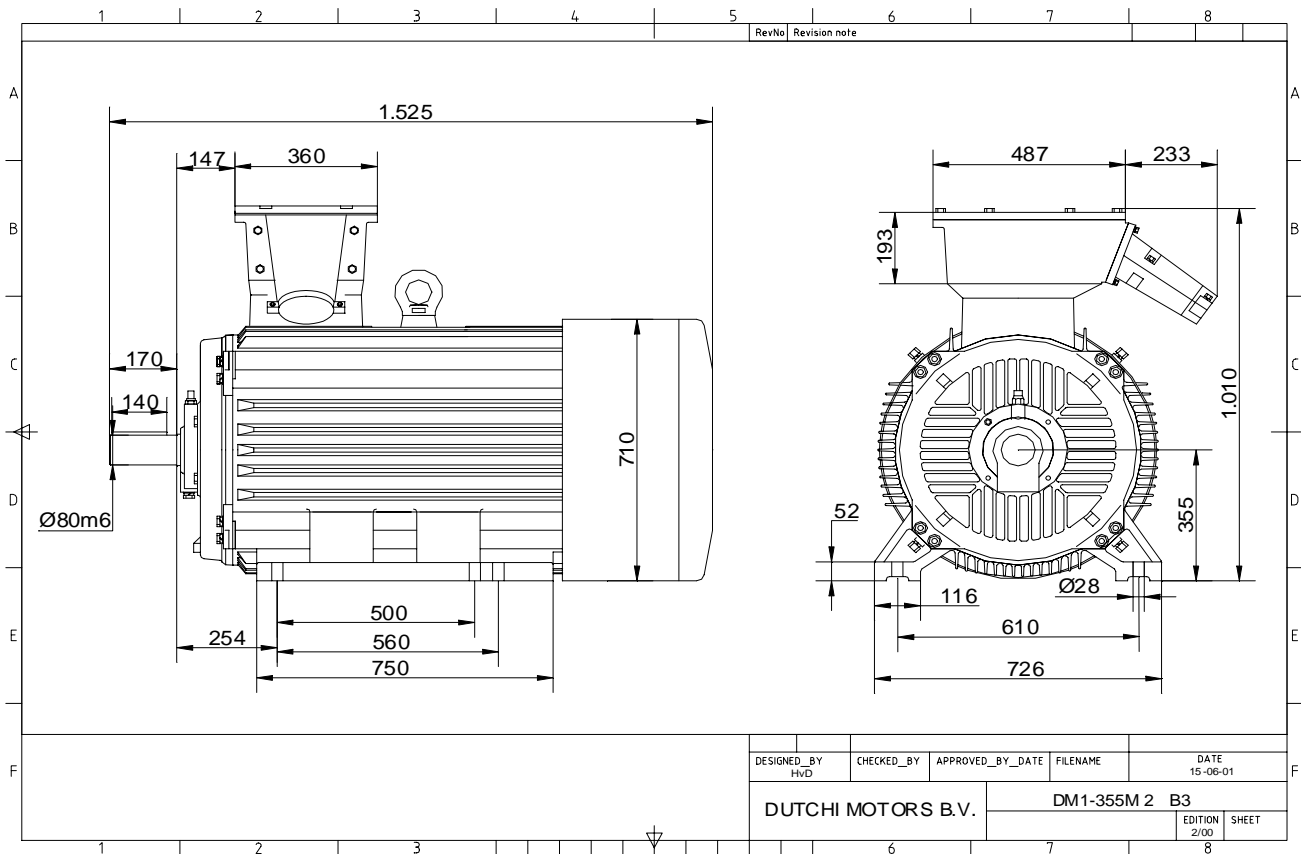


Power is our commodity, the world is our market !



Specification **IEC 60034-1**  
 Manufacturer **Dutchi Motors B.V.**  
 Motor type **DM1- 355 M2**  
 Rated power **250** kW **S1** duty  
 Speed **2985** r.p.m  
 Voltage **400** / **690** V  
 Frequency **50** Hz  
 Connection **Δ** / **Y**  
 Amps full load **420** / **242** A  
 Amps no-load(400V) **88** A  
 Enclosure **IP 55**  
 Insulation Class **F (temp. rise B (80 K))**

Max. coolant temp. **40°C**  
 Max. altitude **1.000** mtr, above sea level  
 Comment **3 x PTC 150°C**  
 Cable entries **2 x Ø 70 mm + 1 x M20x1,5 (ptc)**

Feature **Cast-iron motor**  
 Weight **1690** kg  
 Catalog no. **11132C50D**  
 Warranty **12~18 months**

Efficiency class **N/A**  
 Load data 100% 75% 50% 25%  
 Efficiency **95,8 95,4 94,2 90,1** %  
 Power factor **0,90 0,90 0,86 0,73**

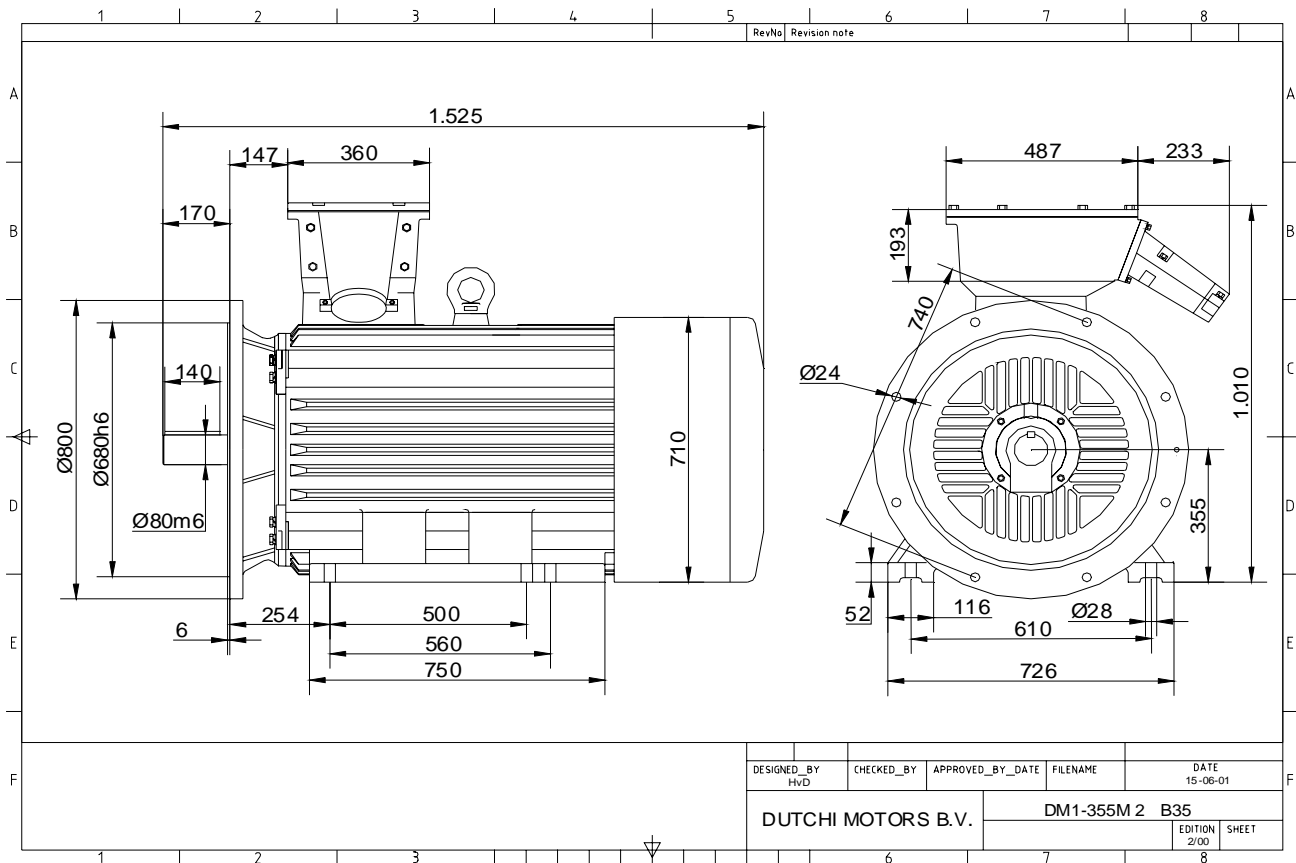
Sound pressure level (1m) **85,8** dB(A)  
 Resistance R20 (open) **0,0080** Ω  
 Resistance R20 **Δ 0,0054** Ω

Full load torque **800** Nm  
 DOL Starting torque vs FL torque **2,12**  
 DOL Pull up torque vs FL torque **1,71**  
 DOL Pull out torque vs FL torque **3,37**  
 Star-Delta Starting torque vs FL torque **0,66**  
 Star-Delta Pull up torque vs FL torque **0,53**  
 Star-Delta Pull out torque vs FL torque **1,05**  
 DOL Starting current vs FL current **6,69**  
 Star Delta Starting current vs FL current **2,09**  
 Rotor Inertia **3,296** kgm<sup>2</sup>

Bearing DE **6317 - C3 or NU317**  
 Bearing NDE **6317 - C3 (IM V1 7317B)**


WI	Change	date	sign.
Dutchi Motors B.V.		Description	date
P.O. Box 5390		Drawing made by :	27-04-04
NL-6802 EJ ARNHEM			HvD
Tel : +31-(0)26 - 3541 600		dutchi.motors@dutchi.nl	
Fax : +31-(0)26 - 3541 650		www.dutchi.com	

Power is our commodity, the world is our market !



Specification **IEC 60034-1**  
 Manufacturer **Dutchi Motors B.V.**  
 Motor type **DM1- 355 M2**  
 Rated power **250** kW **S1** duty  
 Speed **2985** r.p.m  
 Voltage **400** / **690** V  
 Frequency **50** Hz  
 Connection **Δ** / **Y**  
 Amps full load **420** / **242** A  
 Amps no-load(400V) **88** A  
 Enclosure **IP 55**  
 Insulation Class **F (temp. rise B (80 K))**

Max. coolant temp. **40°C**  
 Max. altitude **1.000** mtr, above sea level  
 Comment **3 x PTC 150°C**  
 Cable entries **2 x Ø 70 mm + 1 x M20x1,5 (ptc)**

Feature **Cast-iron motor**  
 Weight **1690** kg  
 Catalog no. **11532C50D**  
 Warranty **12~18 months**

Efficiency class **N/A**  
 Load data 100% 75% 50% 25%  
 Efficiency **95,8 95,4 94,2 90,1** %  
 Power factor **0,90 0,90 0,86 0,73**

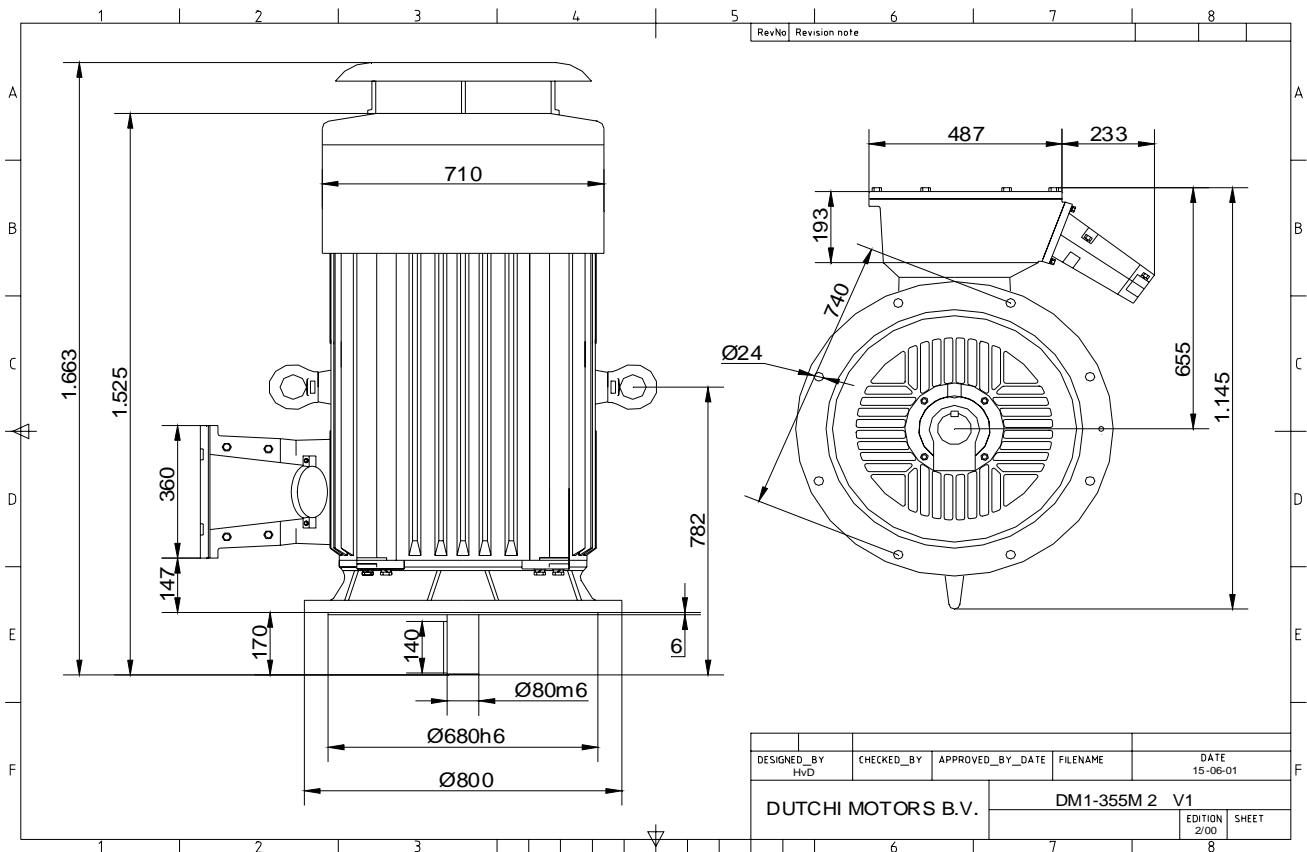
Sound pressure level (1m) **85,8** dB(A)  
 Resistance R20 (open) **0,0080** Ω  
 Resistance R20 **Δ 0,0054** Ω

Full load torque **800** Nm  
 DOL Starting torque vs FL torque **2,12**  
 DOL Pull up torque vs FL torque **1,71**  
 DOL Pull out torque vs FL torque **3,37**  
 Star-Delta Starting torque vs FL torque **0,66**  
 Star-Delta Pull up torque vs FL torque **0,53**  
 Star-Delta Pull out torque vs FL torque **1,05**  
 DOL Starting current vs FL current **6,69**  
 Star Delta Starting current vs FL current **2,09**  
 Rotor Inertia **3,296** kgm<sup>2</sup>

Bearing DE **6317 - C3 or NU317**  
 Bearing NDE **6317 - C3 (IM V1 7317B)**


WI	Change	date	sign.
Dutchi Motors B.V.		Description	date
P.O. Box 5390		Drawing made by :	27-04-04
NL-6802 EJ ARNHEM			
Tel : +31-(0)26 - 3541 600		dutchi.motors@dutchi.nl	
Fax : +31-(0)26 - 3541 650		www.dutchi.com	

Power is our commodity, the world is our market !



Specification **IEC 60034-1**  
 Manufacturer **Dutchi Motors B.V.**  
 Motor type **DM1- 355 M2**  
 Rated power **250** kW **S1** duty  
 Speed **2985** r.p.m  
 Voltage **400 / 690** V  
 Frequency **50** Hz  
 Connection **Δ / Y**  
 Amps full load **420 / 242** A  
 Amps no-load(400V) **88** A  
 Enclosure **IP 55**  
 Insulation Class **F (temp. rise B (80 K))**

Max. coolant temp. **40°C**  
 Max. altitude **1.000** mtr, above sea level  
 Comment **3 x PTC 150°C**  
 Cable entries **2 x Ø 70 mm + 1 x M20x1,5 (ptc)**

Feature **Cast-iron motor**  
 Weight **1690** kg  
 Catalog no. **11032C50D**  
 Warranty **12~18 months**

Efficiency class **N/A**  
 Load data 100% 75% 50% 25%  
 Efficiency **95,8 95,4 94,2 90,1** %  
 Power factor **0,90 0,90 0,86 0,73**

Sound pressure level (1m) **85,8** dB(A)  
 Resistance R20 (open) **0,0080** Ω  
 Resistance R20 **Δ 0,0054** Ω

Full load torque **800** Nm  
 DOL Starting torque vs FL torque **2,12**  
 DOL Pull up torque vs FL torque **1,71**  
 DOL Pull out torque vs FL torque **3,37**  
 Star-Delta Starting torque vs FL torque **0,66**  
 Star-Delta Pull up torque vs FL torque **0,53**  
 Star-Delta Pull out torque vs FL torque **1,05**  
 DOL Starting current vs FL current **6,69**  
 Star Delta Starting current vs FL current **2,09**  
 Rotor Inertia **3,296** kgm<sup>2</sup>

Bearing DE **6317 - C3 or NU317**  
 Bearing NDE **6317 - C3 (IM V1 7317B)**


WI	Change	date	sign.
<b>Dutchi Motors B.V.</b> P.O. Box 5390 NL-6802 EJ ARNHEM Tel : +31-(0)26 - 3541 600 Fax : +31-(0)26 - 3541 650		Discription Drawing made by : 27-04-04	date sign. HvD
dutchi.motors@dutchi.nl www.dutchi.com			