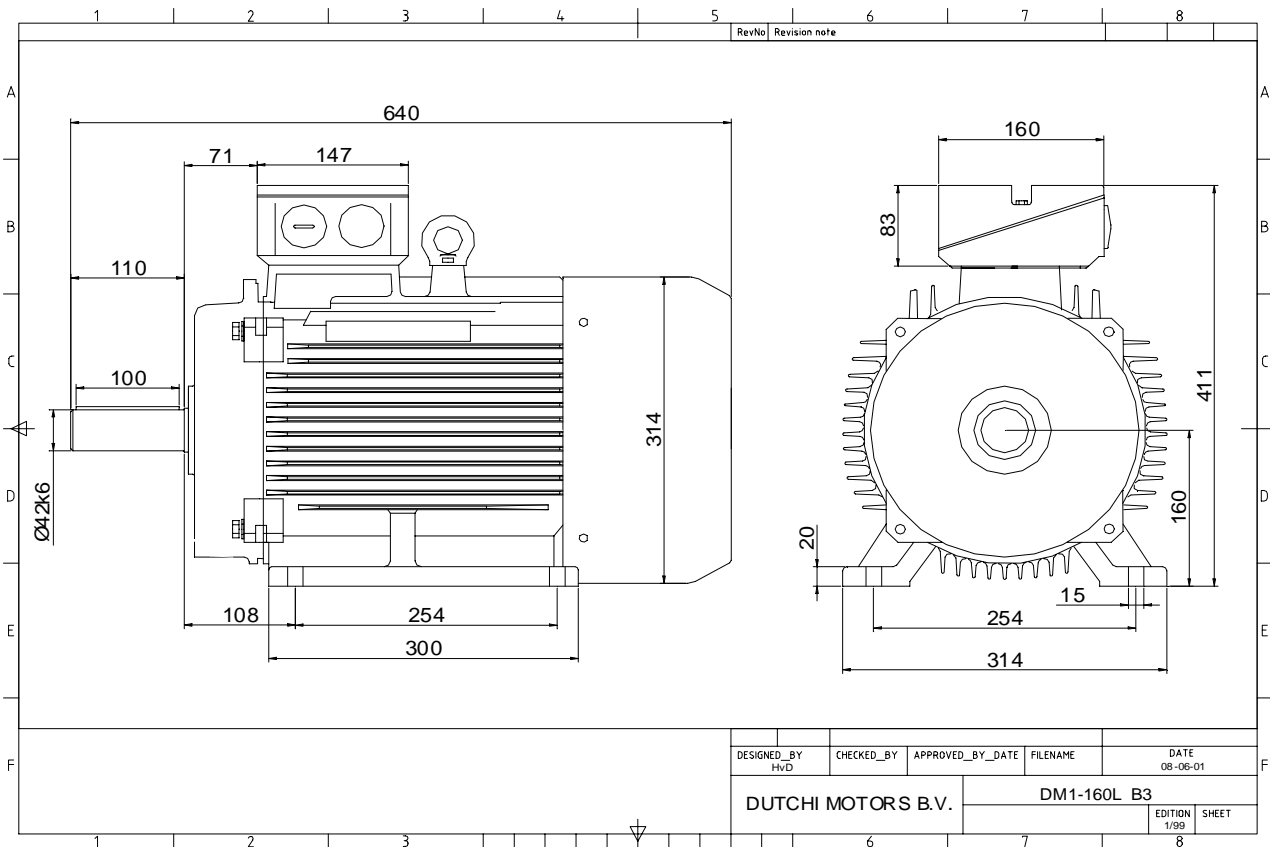


Power is our commodity, the world is our market !



Specification **IEC 60034-1**
 Manufacturer **Dutchi Motors B.V.**
 Motor type **DM1- 160 LX2**
 Rated power **22** kW **S1** duty
 Speed **2935** r.p.m
 Voltage **400** / **690** V
 Frequency **50** Hz
 Connection **Δ** / **Y**
 Amps full load **38,3** / **22,1** A
 Amps no-load(400V) **8,30** A
 Enclosure **IP55**
 Insulation Class **F (temp. rise F)**

Max. coolant temp. **40°C**
 Max. altitude **1.000** mtr, above sea level
 Comment **3 x PTC 150°C**
 Cable entries **2 x M40x1,5 + 1 x M20x1,5 (ptc)**

Feature **Cast-iron motor**
 Weight kg
 Catalog no. **11123A22V**
 Warranty **12~18 months**

Efficiency class **N/A**
 Load data 100% 75% 50% 25%
 Efficiency **90,9 91,3 90,5 85,7** %
 Power factor **0,91 0,90 0,86 0,72**

Sound pressure level (1m) **76,7** dB(A)
 Resistance R20 (open) **0,368** Ω
 Resistance R20 **Δ 0,245** Ω

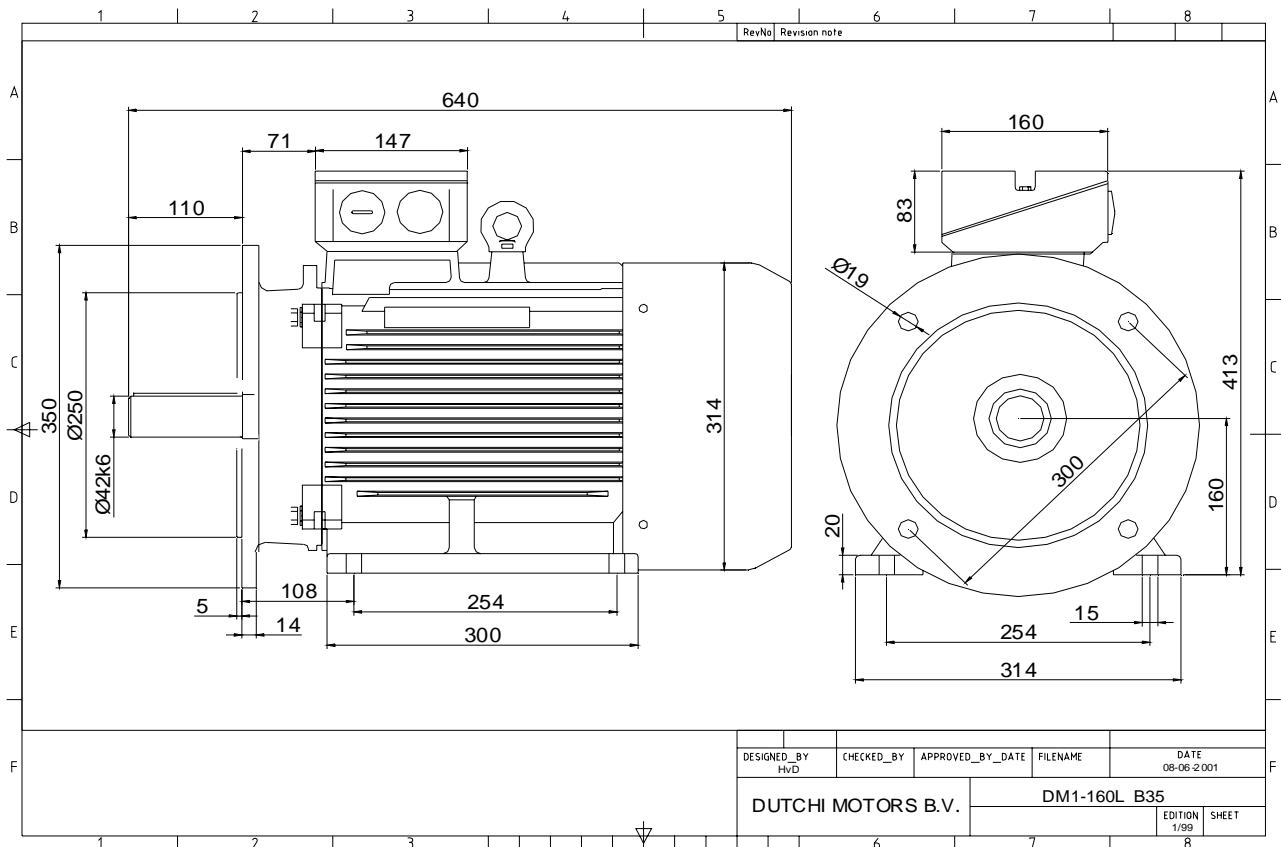
Full load torque **72** Nm
 DOL Starting torque vs FL torque **2,20**
 DOL Pull up torque vs FL torque **1,60**
 DOL Pull out torque vs FL torque **3,14**
 Star-Delta Starting torque vs FL torque **0,69**
 Star-Delta Pull up torque vs FL torque **0,50**
 Star-Delta Pull out torque vs FL torque **0,98**
 DOL Starting current vs FL current **6,99**
 Star Delta Starting current vs FL current **2,19**

Rotor Inertia kgm2

Bearing DE **6309 - ZZ C3**
 Bearing NDE **6309 - ZZ C3**

WI	Change	date	sign.
Dutchi Motors B.V.		Description	date
P.O. Box 5390		Drawing made by :	27-04-04
NL-6802 EJ ARNHEM			
Tel : +31-(0)26 - 3541 600		dutchi.motors@dutchi.nl	
Fax : +31-(0)26 - 3541 650		www.dutchi.com	

Power is our commodity, the world is our market !



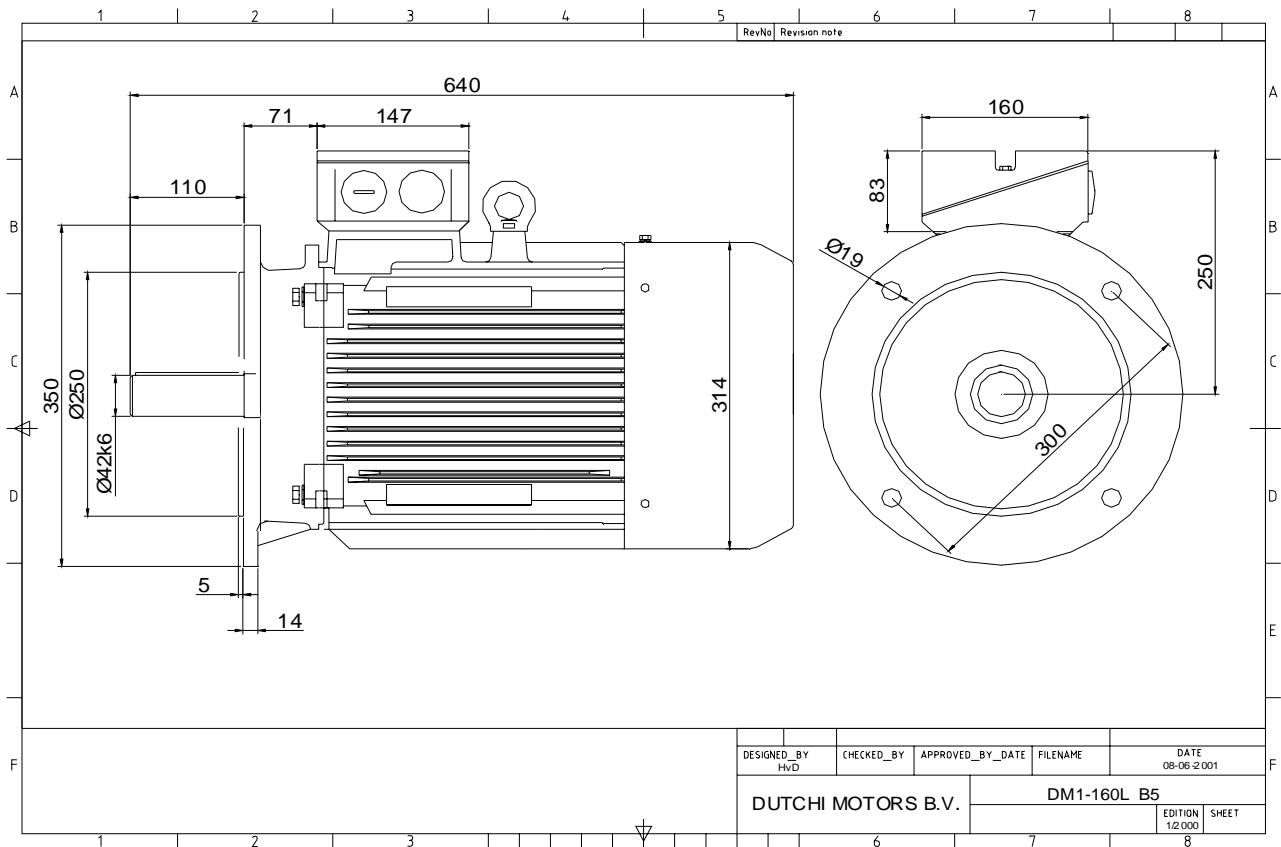
DESIGNED_BY HuD	CHECKED_BY	APPROVED_BY_DATE	FILENAME	DATE 08-06-2001
DUTCHI MOTORS B.V.			DM1-160L B35	
			EDITION 1/99	SHEET

Specification	IEC 60034-1
Manufacturer	Dutchi Motors B.V.
Motor type	DM1- 160 LX2
Rated power	22 kW S1 duty
Speed	2935 r.p.m
Voltage	400 / 690 V
Frequency	50 Hz
Connection	Δ / Y
Amps full load	38,28 / 22,10 A
Amps no-load(400V)	8,30 A
Enclosure	IP55
Insulation Class	F (temp. rise F)
Max. coolant temp.	40°C
Max. altitude	1.000 mtr, above sea level
Comment	3 x PTC 150°C
Cable entries	2 x M40x1,5 + 1 x M20x1,5 (ptc)
Feature	Cast-iron motor
Weight	kg
Catalog no.	11523A22V
Warranty	12~18 months

Efficiency class	N/A			
Load data	100%	75%	50%	25%
Efficiency	90,9	91,3	90,5	85,7 %
Power factor	0,91	0,90	0,86	0,72
Sound pressure level (1m)				76,7 dB(A)
Resistance R20 (open)				0,368 Ω
Resistance R20	Δ			0,245 Ω
Full load torque				71,58 Nm
DOL Starting torque vs FL torque				2,20
DOL Pull up torque vs FL torque				1,60
DOL Pull out torque vs FL torque				3,14
Star-Delta Starting torque vs FL torque				0,69
Star-Delta Pull up torque vs FL torque				0,50
Star-Delta Pull out torque vs FL torque				0,98
DOL Starting current vs FL current				6,99
Star Delta Starting current vs FL current				2,19
Rotor Inertia				kgm ²
Bearing DE				6309 - ZZ C3
Bearing NDE				6309 - ZZ C3

WI	Change	date	sign.
Dutchi Motors B.V. P.O. Box 5390 NL-6802 EJ ARNHEM Tel : +31-(0)26 - 3541 600 Fax : +31-(0)26 - 3541 650		Discription Drawing made by :	date 19-04-04 sign. HvD
		dutchi.motors@dutchi.nl www.dutchi.com	

Power is our commodity, the world is our market !

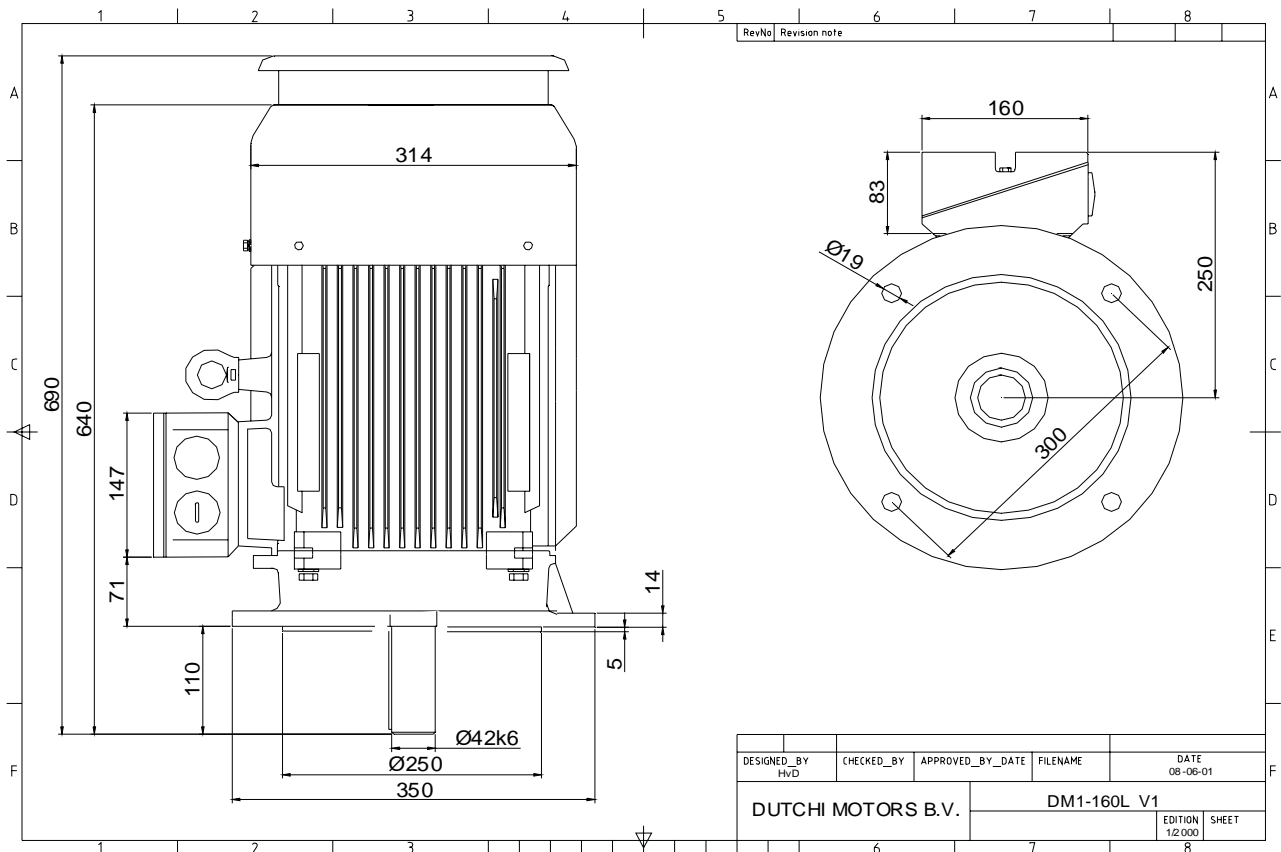


Specification	IEC 60034-1
Manufacturer	Dutchi Motors B.V.
Motor type	DM1- 160 LX2
Rated power	22 kW S1 duty
Speed	2935 r.p.m
Voltage	400 / 690 V
Frequency	50 Hz
Connection	Δ / Y
Amps full load	38,28 / 22,10 A
Amps no-load(400V)	8,30 A
Enclosure	IP55
Insulation Class	F (temp. rise F)
Max. coolant temp.	40°C
Max. altitude	1.000 mtr, above sea level
Comment	3 x PTC 150°C
Cable entries	2 x M40x1,5 + 1 x M20x1,5 (ptc)
Feature	Cast-iron motor
Weight	kg
Catalog no.	11223A22V
Warranty	12~18 months

Efficiency class	N/A			
Load data	100%	75%	50%	25%
Efficiency	90,9	91,3	90,5	85,7 %
Power factor	0,91	0,90	0,86	0,72
Sound pressure level (1m)				76,7 dB(A)
Resistance R20 (open)				0,368 Ω
Resistance R20	Δ			0,245 Ω
Full load torque				71,58 Nm
DOL Starting torque vs FL torque				2,20
DOL Pull up torque vs FL torque				1,60
DOL Pull out torque vs FL torque				3,14
Star-Delta Starting torque vs FL torque				0,69
Star-Delta Pull up torque vs FL torque				0,50
Star-Delta Pull out torque vs FL torque				0,98
DOL Starting current vs FL current				6,99
Star Delta Starting current vs FL current				2,19
Rotor Inertia				kgm ²
Bearing DE				6309 - ZZ C3
Bearing NDE				6309 - ZZ C3

WI	Change	date	sign.
Dutchi Motors B.V. P.O. Box 5390 NL-6802 EJ ARNHEM Tel : +31-(0)26 - 3541 600 Fax : +31-(0)26 - 3541 650		Discription Drawing made by :	date 19-04-04 sign. HvD
dutchi.motors@dutchi.nl www.dutchi.com			

Power is our commodity, the world is our market !



Specification **IEC 60034-1**
 Manufacturer **Dutchi Motors B.V.**
 Motor type **DM1- 160 LX2**
 Rated power **22** kW **S1** duty
 Speed **2935** r.p.m
 Voltage **400** / **690** V
 Frequency **50** Hz
 Connection **Δ** / **Y**
 Amps full load **38,28** / **22,10** A
 Amps no-load(400V) **8,30** A
 Enclosure **IP55**
 Insulation Class **F (temp. rise F)**

Max. coolant temp. **40°C**
 Max. altitude **1.000** mtr, above sea level
 Comment **3 x PTC 150°C**
 Cable entries **2 x M40x1,5 + 1 x M20x1,5 (ptc)**

Feature **Cast-iron motor**
 Weight kg
 Catalog no. **11023A22V**
 Warranty **12~18 months**

Efficiency class **N/A**
 Load data 100% 75% 50% 25%
 Efficiency **90,9 91,3 90,5 85,7** %
 Power factor **0,91 0,90 0,86 0,72**

Sound pressure level (1m) **76,7** dB(A)
 Resistance R20 (open) **0,368** Ω
 Resistance R20 **Δ 0,245** Ω

Full load torque **71,58** Nm
 DOL Starting torque vs FL torque **2,20**
 DOL Pull up torque vs FL torque **1,60**
 DOL Pull out torque vs FL torque **3,14**
 Star-Delta Starting torque vs FL torque **0,69**
 Star-Delta Pull up torque vs FL torque **0,50**
 Star-Delta Pull out torque vs FL torque **0,98**
 DOL Starting current vs FL current **6,99**
 Star Delta Starting current vs FL current **2,19**

Rotor Inertia kgm2

Bearing DE **6309 - ZZ C3**
 Bearing NDE **6309 - ZZ C3**

WI	Change	date	sign.
Dutchi Motors B.V.		Description	date
P.O. Box 5390		Drawing made by :	19-04-04
NL-6802 EJ ARNHEM			
Tel : +31-(0)26 - 3541 600		dutchi.motors@dutchi.nl	
Fax : +31-(0)26 - 3541 650		www.dutchi.com	