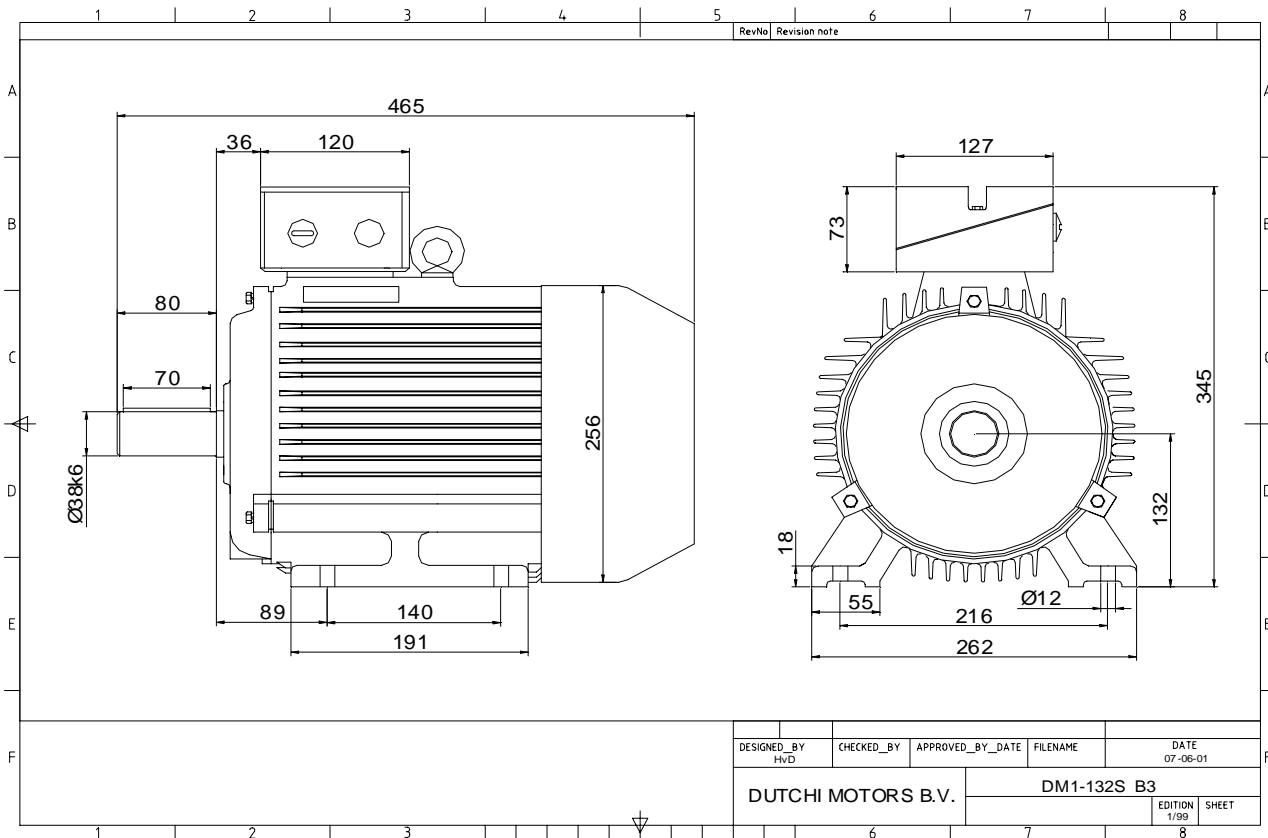


Power is our commodity, the world is our market !



DESIGNED_BY HVD	CHECKED_BY	APPROVED_BY_DATE	FILENAME	DATE 07-06-01
DUTCHI MOTORS B.V.			DM1-132S B3	
			EDITION 1/99	SHEET

Specification **IEC 60034-1**
 Manufacturer **Dutchi Motors B.V.**
 Motor type **DM1- 132 S2**
 Rated power **5,5** kW **S1** duty
 Speed **2910** r.p.m
 Voltage **400** / **690** V
 Frequency **50** Hz
 Connection **Δ** / **Y**
 Amps full load **10,39** / **6,00** A
 Amps no-load(400V) **4,00** A
 Enclosure **IP 55**
 Insulation Class **F (temp. rise B (80 K))**

Max. coolant temp. **40°C**
 Max. altitude **1.000** mtr, above sea level
 Comment **3 x PTC 150°C**
 Cable entries **2 x M32x1,5 + 1 x M20x1,5 (ptc)**

Feature **Cast-iron motor**
 Weight **59,0** kg
 Catalog no. **11132550D**
 Warranty **12~18 months**

Efficiency class **EFF 2**
 Load data 100% 75% 50% 25%
 Efficiency **86,7 86,3 83,7 74,7** %
 Power factor **0,88 0,84 0,74 0,54**

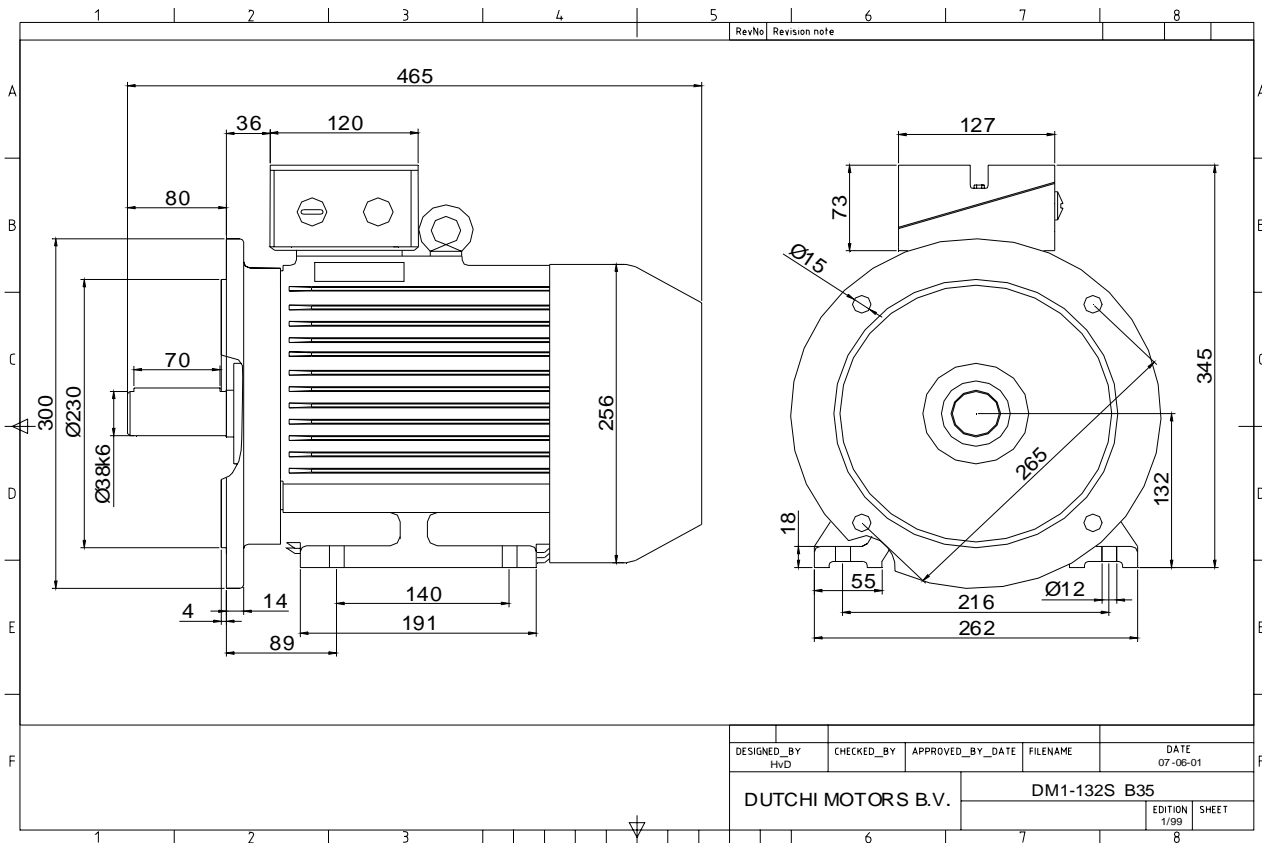
Sound pressure level (1m) **70,4** dB(A)
 Resistance R20 (open) **2,03** Ω
 Resistance R20 **Δ 1,35** Ω

Full load torque **18,05** Nm
 DOL Starting torque vs FL torque **2,58**
 DOL Pull up torque vs FL torque **2,11**
 DOL Pull out torque vs FL torque **4,25**
 Star-Delta Starting torque vs FL torque **0,81**
 Star-Delta Pull up torque vs FL torque **0,66**
 Star-Delta Pull out torque vs FL torque **1,33**
 DOL Starting current vs FL current **7,40**
 Star Delta Starting current vs FL current **2,31**
 Rotor Inertia **0,0104** kgm²

Bearing DE **6308 - ZZ C3**
 Bearing NDE **6308 - ZZ C3**

WI	Change	date	sign.
Dutchi Motors B.V. P.O. Box 5390 NL-6802 EJ ARNHEM Tel : +31-(0)26 - 3541 600 Fax : +31-(0)26 - 3541 650		Discription Drawing made by : 19-04-04	date sign. HVD
dutchi.motors@dutchi.nl www.dutchi.com			

Power is our commodity, the world is our market !



Specification **IEC 60034-1**
 Manufacturer **Dutchi Motors B.V.**
 Motor type **DM1- 132 S2**
 Rated power **5,5** kW **S1** duty
 Speed **2910** r.p.m
 Voltage **400 / 690** V
 Frequency **50** Hz
 Connection **Δ / Y**
 Amps full load **10,39 / 6,00** A
 Amps no-load(400V) **4,00** A
 Enclosure **IP 55**
 Insulation Class **F (temp. rise B (80 K))**

Max. coolant temp. **40°C**
 Max. altitude **1.000** mtr, above sea level
 Comment **3 x PTC 150°C**
 Cable entries **2 x M32x1,5 + 1 x M20x1,5 (ptc)**

Feature **Cast-iron motor**
 Weight **59,0** kg
 Catalog no. **11532550D**
 Warranty **12~18 months**

Efficiency class **EFF 2**
 Load data 100% 75% 50% 25%
 Efficiency **86,7 86,3 83,7 74,7** %
 Power factor **0,88 0,84 0,74 0,54**

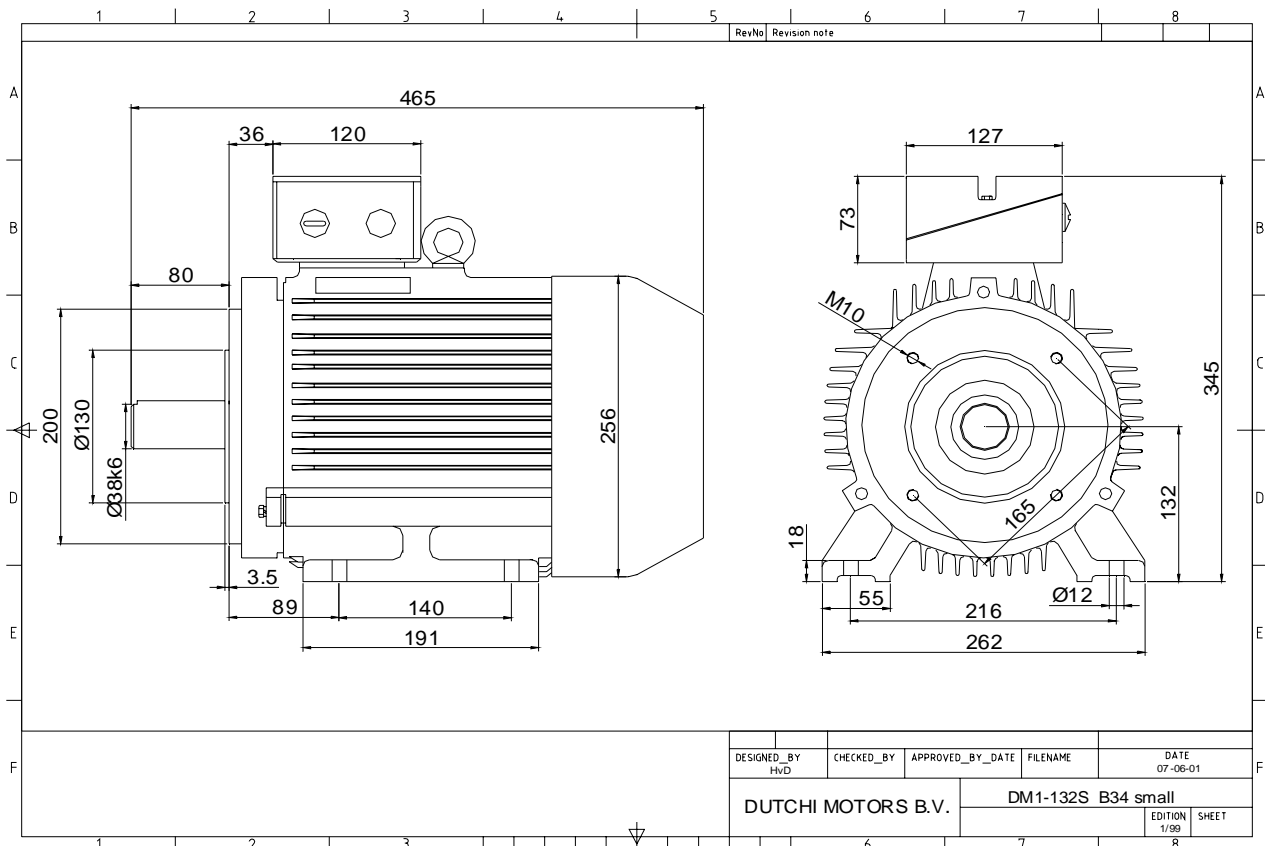
Sound pressure level (1m) **70,4** dB(A)
 Resistance R20 (open) **2,03** Ω
 Resistance R20 **Δ 1,35** Ω

Full load torque **18,05** Nm
 DOL Starting torque vs FL torque **2,58**
 DOL Pull up torque vs FL torque **2,11**
 DOL Pull out torque vs FL torque **4,25**
 Star-Delta Starting torque vs FL torque **0,81**
 Star-Delta Pull up torque vs FL torque **0,66**
 Star-Delta Pull out torque vs FL torque **1,33**
 DOL Starting current vs FL current **7,40**
 Star Delta Starting current vs FL current **2,31**
 Rotor Inertia **0,0104** kgm²

Bearing DE **6308 - ZZ C3**
 Bearing NDE **6308 - ZZ C3**

WI	Change	date	sign.
Dutchi Motors B.V. P.O. Box 5390 NL-6802 EJ ARNHEM Tel : +31-(0)26 - 3541 600 Fax : +31-(0)26 - 3541 650		Description	date
		Drawing made by :	19-04-04
		dutchi.motors@dutchi.nl www.dutchi.com	

Power is our commodity, the world is our market !



Specification **IEC 60034-1**
 Manufacturer **Dutchi Motors B.V.**
 Motor type **DM1- 132 S2**
 Rated power **5,5** kW **S1** duty
 Speed **2910** r.p.m
 Voltage **400 / 690** V
 Frequency **50** Hz
 Connection **Δ / Y**
 Amps full load **10,39 / 6,00** A
 Amps no-load(400V) **4,00** A
 Enclosure **IP 55**
 Insulation Class **F (temp. rise B (80 K))**

Max. coolant temp. **40°C**
 Max. altitude **1.000** mtr, above sea level
 Comment **3 x PTC 150°C**
 Cable entries **2 x M32x1,5 + 1 x M20x1,5 (ptc)**

Feature **Cast-iron motor**
 Weight **59,0** kg
 Catalog no. **11632550D**
 Warranty **12~18 months**

Efficiency class **EFF 2**
 Load data 100% 75% 50% 25%
 Efficiency **86,7 86,3 83,7 74,7** %
 Power factor **0,88 0,84 0,74 0,54**

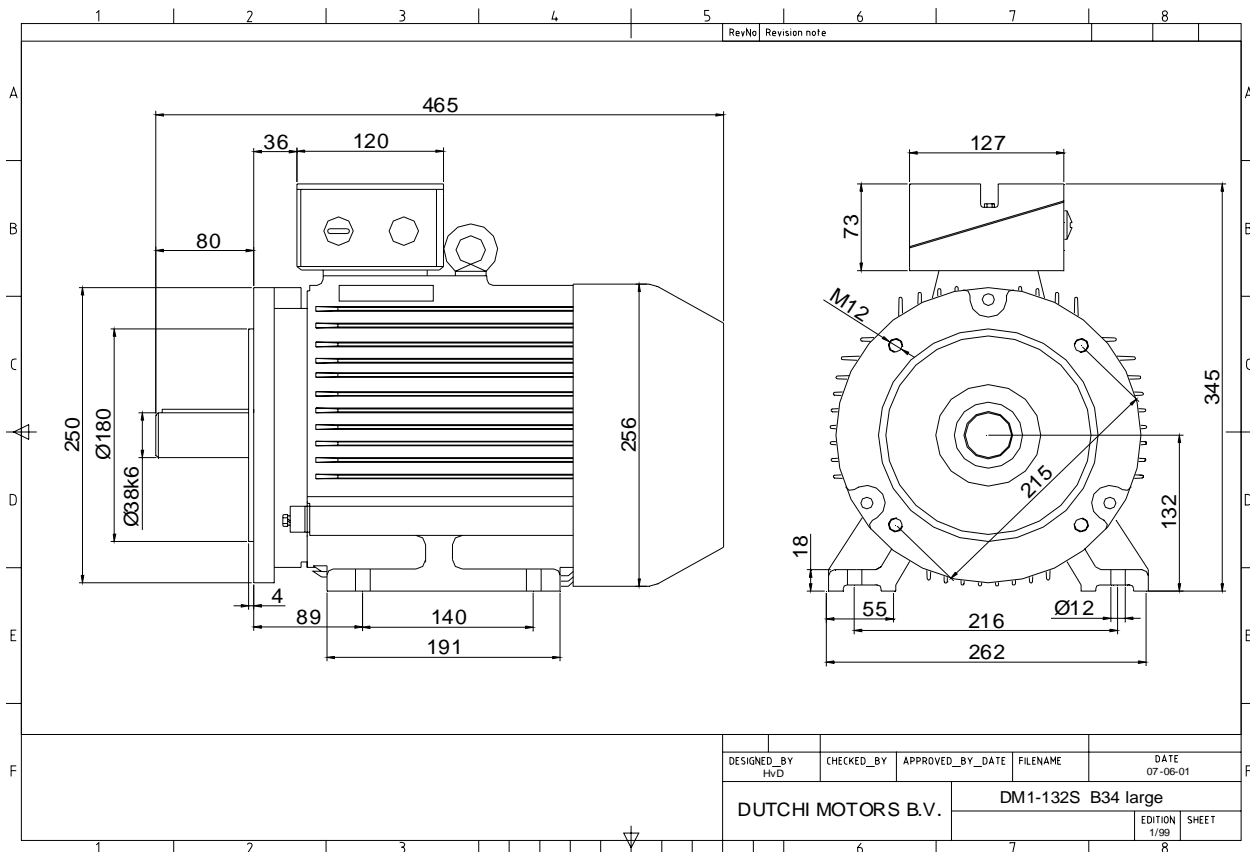
Sound pressure level (1m) **70,4** dB(A)
 Resistance R20 (open) **2,03** Ω
 Resistance R20 **Δ 1,35** Ω

Full load torque **18,05** Nm
 DOL Starting torque vs FL torque **2,58**
 DOL Pull up torque vs FL torque **2,11**
 DOL Pull out torque vs FL torque **4,25**
 Star-Delta Starting torque vs FL torque **0,81**
 Star-Delta Pull up torque vs FL torque **0,66**
 Star-Delta Pull out torque vs FL torque **1,33**
 DOL Starting current vs FL current **7,40**
 Star Delta Starting current vs FL current **2,31**
 Rotor Inertia **0,0104** kgm²

Bearing DE **6308 - ZZ C3**
 Bearing NDE **6308 - ZZ C3**

WI	Change	date	sign.
Dutchi Motors B.V. P.O. Box 5390 NL-6802 EJ ARNHEM Tel : +31-(0)26 - 3541 600 Fax : +31-(0)26 - 3541 650		Discription Drawing made by : 19-04-04	date sign. HvD
dutchi.motors@dutchi.nl www.dutchi.com			

Power is our commodity, the world is our market !



Specification **IEC 60034-1**
 Manufacturer **Dutchi Motors B.V.**
 Motor type **DM1- 132 S2**
 Rated power **5,5** kW **S1** duty
 Speed **2910** r.p.m
 Voltage **400 / 690** V
 Frequency **50** Hz
 Connection **Δ / Y**
 Amps full load **10,39 / 6,00** A
 Amps no-load(400V) **4,00** A
 Enclosure **IP 55**
 Insulation Class **F (temp. rise B (80 K))**

Max. coolant temp. **40°C**
 Max. altitude **1.000** mtr, above sea level
 Comment **3 x PTC 150°C**
 Cable entries **2 x M32x1,5 + 1 x M20x1,5 (ptc)**

Feature **Cast-iron motor**
 Weight **59,0** kg
 Catalog no. **11732550D**
 Warranty **12~18 months**

Efficiency class **EFF 2**
 Load data 100% 75% 50% 25%
 Efficiency **86,7 86,3 83,7 74,7** %
 Power factor **0,88 0,84 0,74 0,54**

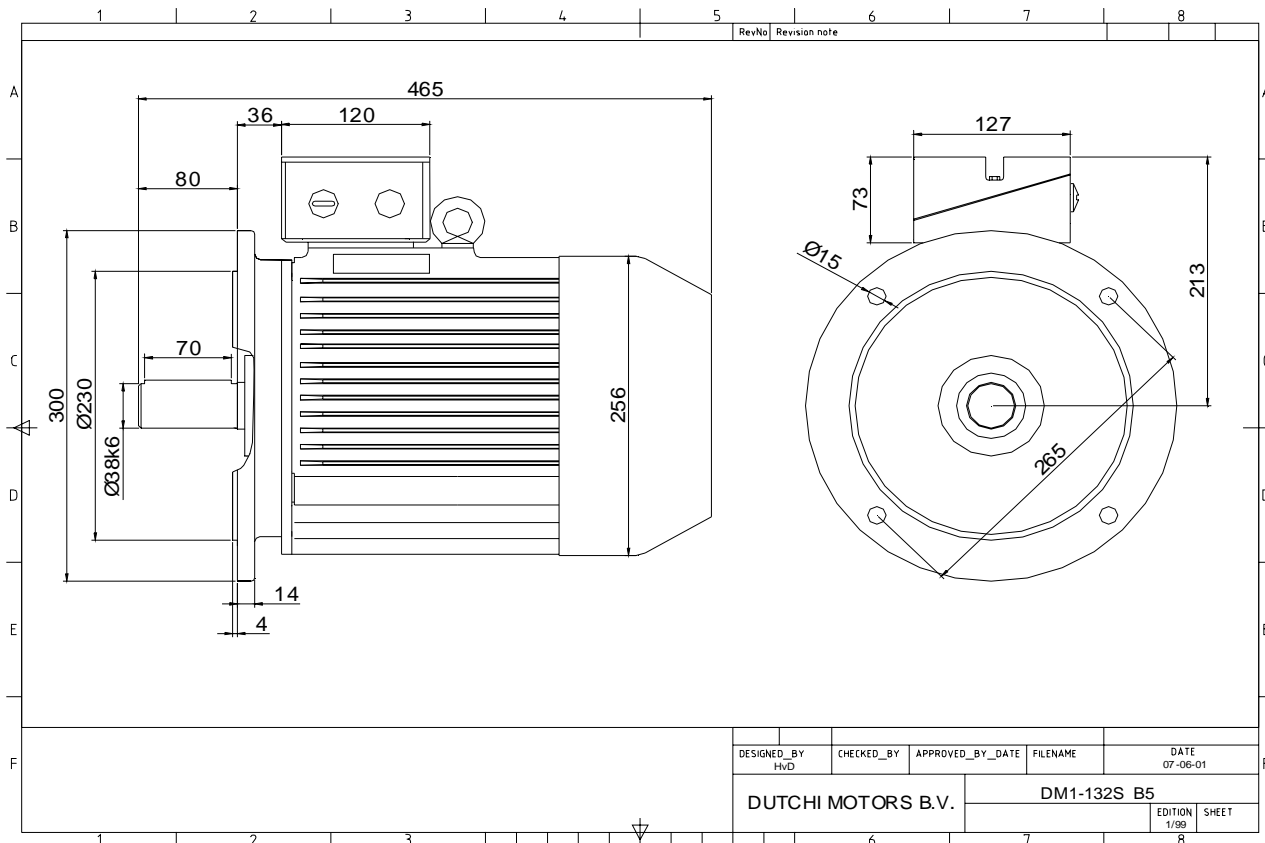
Sound pressure level (1m) **70,4** dB(A)
 Resistance R20 (open) **2,03** Ω
 Resistance R20 **Δ 1,35** Ω

Full load torque **18,05** Nm
 DOL Starting torque vs FL torque **2,58**
 DOL Pull up torque vs FL torque **2,11**
 DOL Pull out torque vs FL torque **4,25**
 Star-Delta Starting torque vs FL torque **0,81**
 Star-Delta Pull up torque vs FL torque **0,66**
 Star-Delta Pull out torque vs FL torque **1,33**
 DOL Starting current vs FL current **7,40**
 Star Delta Starting current vs FL current **2,31**
 Rotor Inertia **0,0104** kgm2

Bearing DE **6308 - ZZ C3**
 Bearing NDE **6308 - ZZ C3**

WI	Change	date	sign.
Dutchi Motors B.V.		Description	date
P.O. Box 5390		Drawing made by :	19-04-04
NL-6802 EJ ARNHEM			
Tel : +31-(0)26 - 3541 600		dutchi.motors@dutchi.nl	
Fax : +31-(0)26 - 3541 650		www.dutchi.com	

Power is our commodity, the world is our market !



Specification **IEC 60034-1**
 Manufacturer **Dutchi Motors B.V.**
 Motor type **DM1- 132 S2**
 Rated power **5,5** kW **S1** duty
 Speed **2910** r.p.m
 Voltage **400** / **690** V
 Frequency **50** Hz
 Connection **Δ** / **Y**
 Amps full load **10,39** / **6,00** A
 Amps no-load(400V) **4,00** A
 Enclosure **IP 55**
 Insulation Class **F (temp. rise B (80 K))**

Max. coolant temp. **40°C**
 Max. altitude **1.000** mtr, above sea level
 Comment **3 x PTC 150°C**
 Cable entries **2 x M32x1,5 + 1 x M20x1,5 (ptc)**

Feature **Cast-iron motor**
 Weight **59,0** kg
 Catalog no. **11232550D**
 Warranty **12~18 months**

Efficiency class **EFF 2**
 Load data 100% 75% 50% 25%
 Efficiency **86,7 86,3 83,7 74,7** %
 Power factor **0,88 0,84 0,74 0,54**

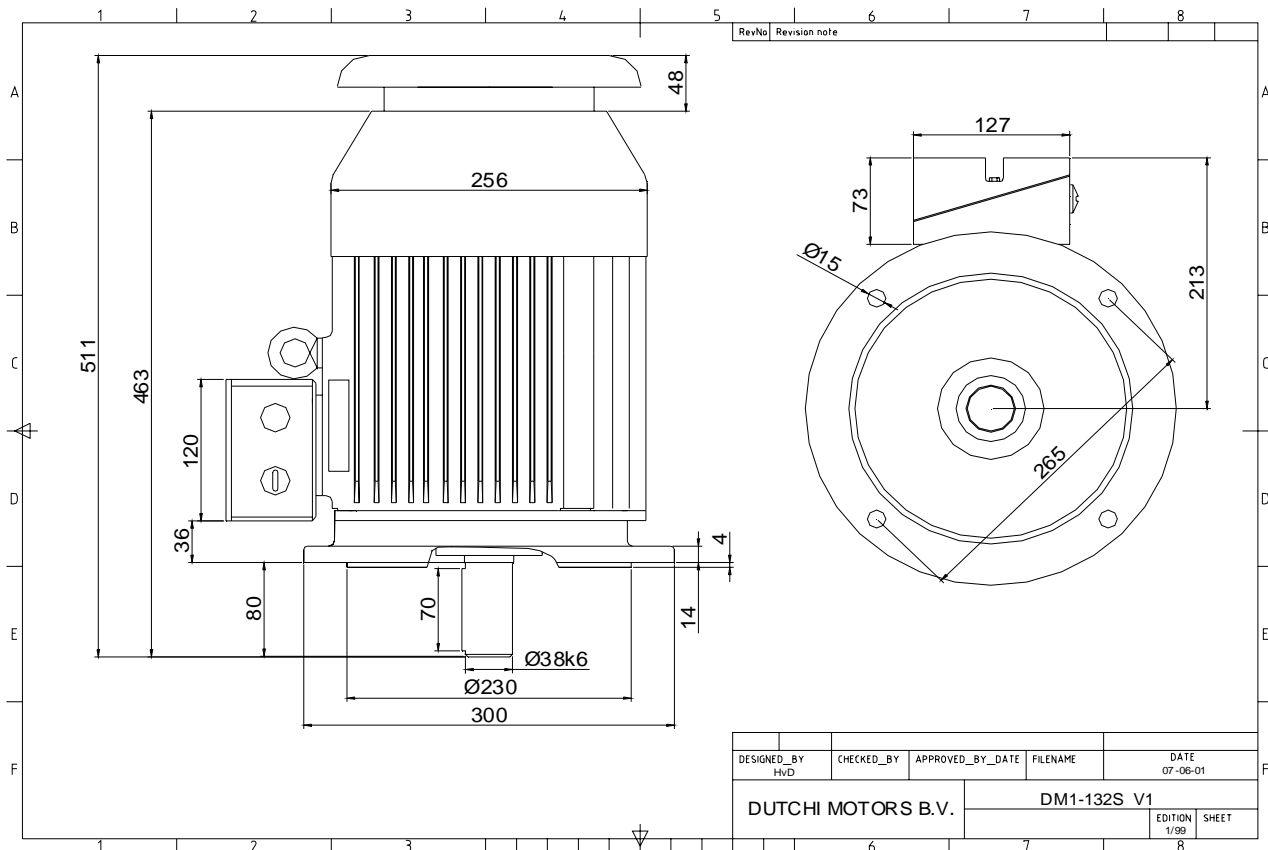
Sound pressure level (1m) **70,4** dB(A)
 Resistance R20 (open) **2,03** Ω
 Resistance R20 **Δ 1,35** Ω

Full load torque **18,05** Nm
 DOL Starting torque vs FL torque **2,58**
 DOL Pull up torque vs FL torque **2,11**
 DOL Pull out torque vs FL torque **4,25**
 Star-Delta Starting torque vs FL torque **0,81**
 Star-Delta Pull up torque vs FL torque **0,66**
 Star-Delta Pull out torque vs FL torque **1,33**
 DOL Starting current vs FL current **7,40**
 Star Delta Starting current vs FL current **2,31**
 Rotor Inertia **0,0104** kgm²

Bearing DE **6308 - ZZ C3**
 Bearing NDE **6308 - ZZ C3**

WI	Change	date	sign.
Dutchi Motors B.V.		Description	date
P.O. Box 5390		Drawing made by :	19-04-04
NL-6802 EJ ARNHEM			
Tel : +31-(0)26 - 3541 600		dutchi.motors@dutchi.nl	
Fax : +31-(0)26 - 3541 650		www.dutchi.com	

Power is our commodity, the world is our market !



Specification **IEC 60034-1**
 Manufacturer **Dutchi Motors B.V.**
 Motor type **DM1- 132 S2**
 Rated power **5,5** kW **S1** duty
 Speed **2910** r.p.m
 Voltage **400 / 690** V
 Frequency **50** Hz
 Connection **Δ / Y**
 Amps full load **10,39 / 6,00** A
 Amps no-load(400V) **4,00** A
 Enclosure **IP 55**
 Insulation Class **F (temp. rise B (80 K))**

Max. coolant temp. **40°C**
 Max. altitude **1.000** mtr, above sea level
 Comment **3 x PTC 150°C**
 Cable entries **2 x M32x1,5 + 1 x M20x1,5 (ptc)**

Feature **Cast-iron motor**
 Weight **59,0** kg
 Catalog no. **11032550D**
 Warranty **12~18 months**

Efficiency class **EFF 2**
 Load data 100% 75% 50% 25%
 Efficiency **86,7 86,3 83,7 74,7** %
 Power factor **0,88 0,84 0,74 0,54**

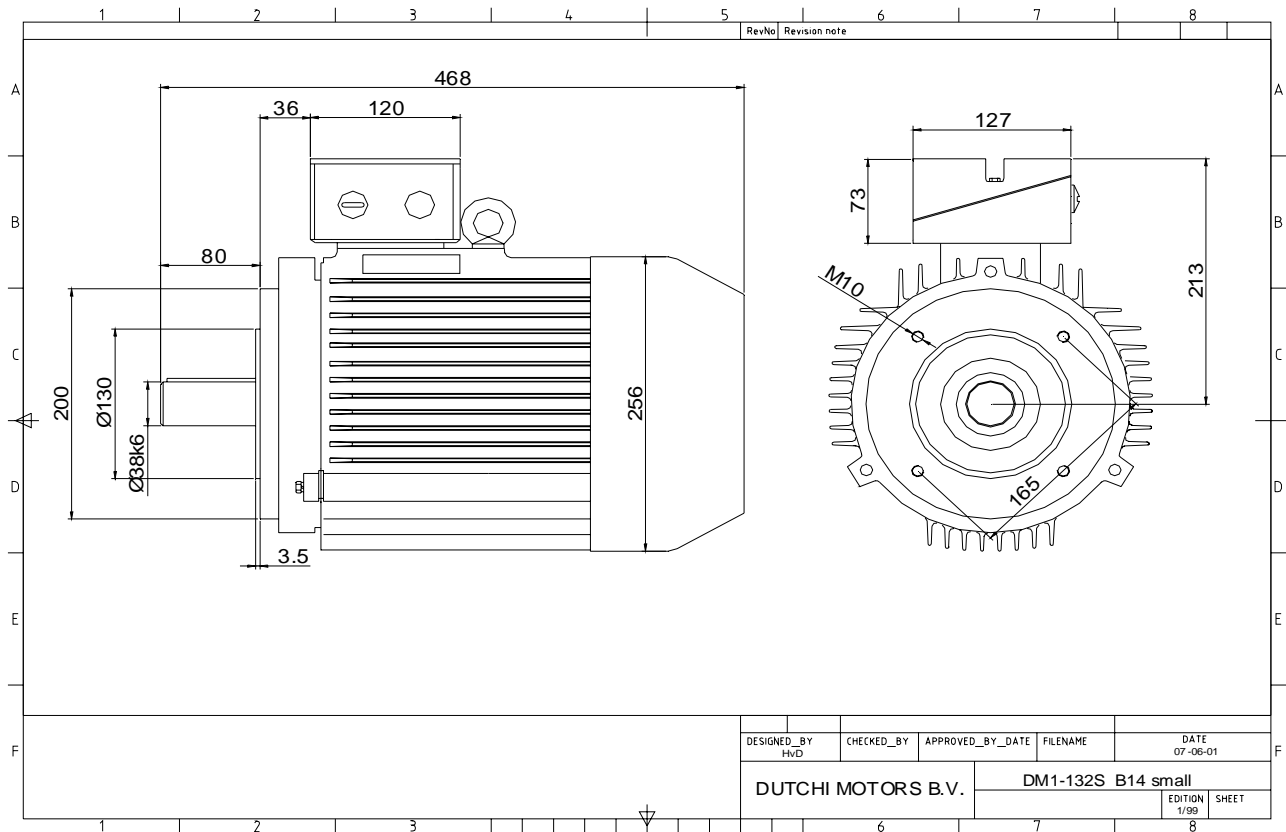
Sound pressure level (1m) **70,4** dB(A)
 Resistance R20 (open) **2,03** Ω
 Resistance R20 **Δ 1,35** Ω

Full load torque **18,05** Nm
 DOL Starting torque vs FL torque **2,58**
 DOL Pull up torque vs FL torque **2,11**
 DOL Pull out torque vs FL torque **4,25**
 Star-Delta Starting torque vs FL torque **0,81**
 Star-Delta Pull up torque vs FL torque **0,66**
 Star-Delta Pull out torque vs FL torque **1,33**
 DOL Starting current vs FL current **7,40**
 Star Delta Starting current vs FL current **2,31**
 Rotor Inertia **0,0104** kgm²

Bearing DE **6308 - ZZ C3**
 Bearing NDE **6308 - ZZ C3**

WI	Change	date	sign.
Dutchi Motors B.V. P.O. Box 5390 NL-6802 EJ ARNHEM Tel : +31-(0)26 - 3541 600 Fax : +31-(0)26 - 3541 650		Description Drawing made by :	date 19-04-04
		sign. HvD	
		dutchi.motors@dutchi.nl www.dutchi.com	

Power is our commodity, the world is our market !



Specification **IEC 60034-1**
 Manufacturer **Dutchi Motors B.V.**
 Motor type **DM1- 132 S2**
 Rated power **5,5** kW **S1** duty
 Speed **2910** r.p.m
 Voltage **400** / **690** V
 Frequency **50** Hz
 Connection **Δ** / **Y**
 Amps full load **10,39** / **6,00** A
 Amps no-load(400V) **4,00** A
 Enclosure **IP 55**
 Insulation Class **F (temp. rise B (80 K))**

Max. coolant temp. **40°C**
 Max. altitude **1.000** mtr, above sea level
 Comment **3 x PTC 150°C**
 Cable entries **2 x M32x1,5 + 1 x M20x1,5 (ptc)**

Feature **Cast-iron motor**
 Weight **59,0** kg
 Catalog no. **11332550D**
 Warranty **12~18 months**

Efficiency class **EFF 2**
 Load data 100% 75% 50% 25%
 Efficiency **86,7 86,3 83,7 74,7** %
 Power factor **0,88 0,84 0,74 0,54**

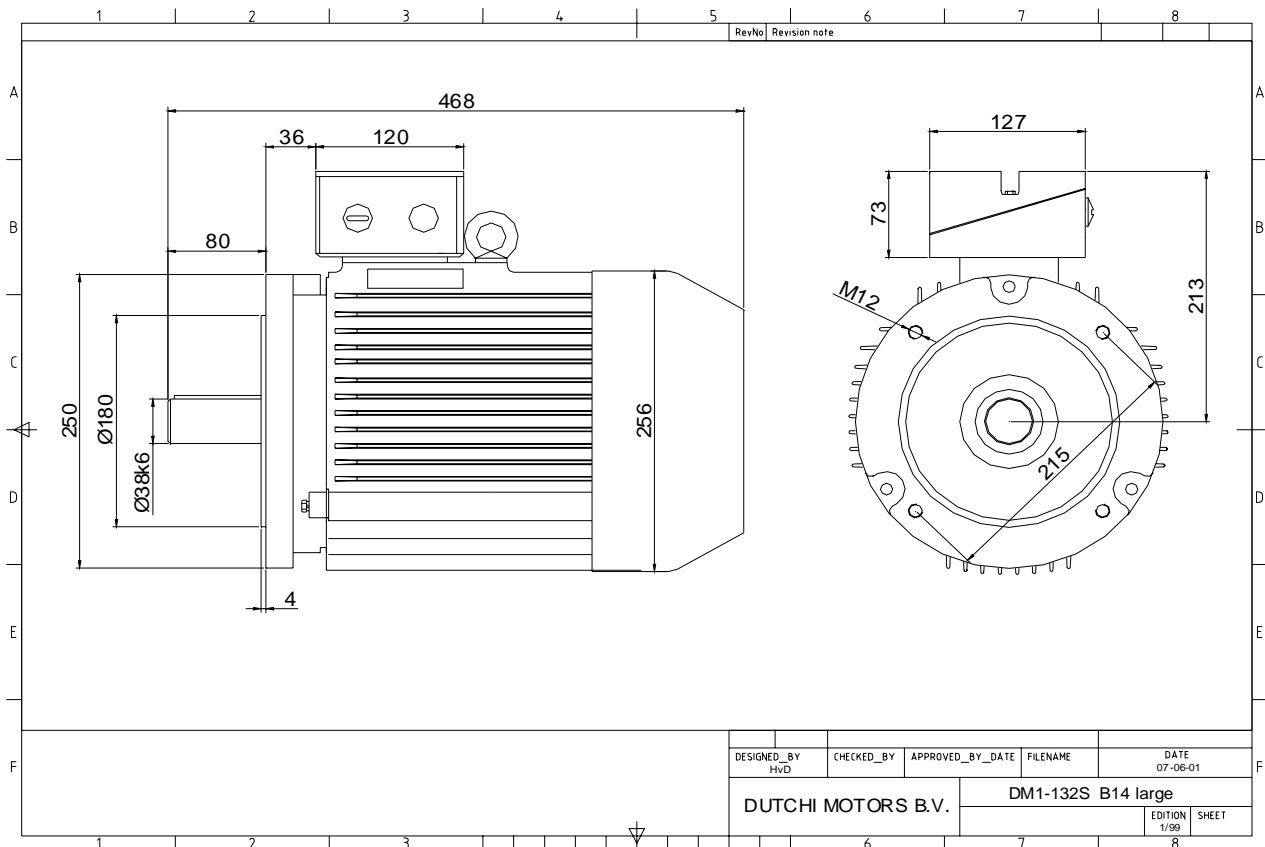
Sound pressure level (1m) **70,4** dB(A)
 Resistance R20 (open) **2,03** Ω
 Resistance R20 **Δ 1,35** Ω

Full load torque **18,05** Nm
 DOL Starting torque vs FL torque **2,58**
 DOL Pull up torque vs FL torque **2,11**
 DOL Pull out torque vs FL torque **4,25**
 Star-Delta Starting torque vs FL torque **0,81**
 Star-Delta Pull up torque vs FL torque **0,66**
 Star-Delta Pull out torque vs FL torque **1,33**
 DOL Starting current vs FL current **7,40**
 Star Delta Starting current vs FL current **2,31**
 Rotor Inertia **0,0104** kgm²

Bearing DE **6308 - ZZ C3**
 Bearing NDE **6308 - ZZ C3**

WI	Change	date	sign.
Dutchi Motors B.V. P.O. Box 5390 NL-6802 EJ ARNHEM Tel : +31-(0)26 - 3541 600 Fax : +31-(0)26 - 3541 650		Description	date
		Drawing made by :	19-04-04
		dutchi.motors@dutchi.nl www.dutchi.com	

Power is our commodity, the world is our market !



Specification **IEC 60034-1**
 Manufacturer **Dutchi Motors B.V.**
 Motor type **DM1- 132 S2**
 Rated power **5,5** kW **S1** duty
 Speed **2910** r.p.m
 Voltage **400 / 690** V
 Frequency **50** Hz
 Connection **Δ / Y**
 Amps full load **10,39 / 6,00** A
 Amps no-load(400V) **4,00** A
 Enclosure **IP 55**
 Insulation Class **F (temp. rise B (80 K))**

Max. coolant temp. **40°C**
 Max. altitude **1.000** mtr, above sea level
 Comment **3 x PTC 150°C**
 Cable entries **2 x M32x1,5 + 1 x M20x1,5 (ptc)**

Feature **Cast-iron motor**
 Weight **59,0** kg
 Catalog no. **11432550D**
 Warranty **12~18 months**

Efficiency class **EFF 2**
 Load data 100% 75% 50% 25%
 Efficiency **86,7 86,3 83,7 74,7** %
 Power factor **0,88 0,84 0,74 0,54**

Sound pressure level (1m) **70,4** dB(A)
 Resistance R20 (open) **2,03** Ω
 Resistance R20 **Δ 1,35** Ω

Full load torque **18,05** Nm
 DOL Starting torque vs FL torque **2,58**
 DOL Pull up torque vs FL torque **2,11**
 DOL Pull out torque vs FL torque **4,25**
 Star-Delta Starting torque vs FL torque **0,81**
 Star-Delta Pull up torque vs FL torque **0,66**
 Star-Delta Pull out torque vs FL torque **1,33**
 DOL Starting current vs FL current **7,40**
 Star Delta Starting current vs FL current **2,31**
 Rotor Inertia **0,0104** kgm2

Bearing DE **6308 - ZZ C3**
 Bearing NDE **6308 - ZZ C3**

WI	Change	date	sign.
Dutchi Motors B.V.		Description	date
P.O. Box 5390		Drawing made by :	19-04-04
NL-6802 EJ ARNHEM			
Tel : +31-(0)26 - 3541 600		dutchi.motors@dutchi.nl	
Fax : +31-(0)26 - 3541 650		www.dutchi.com	