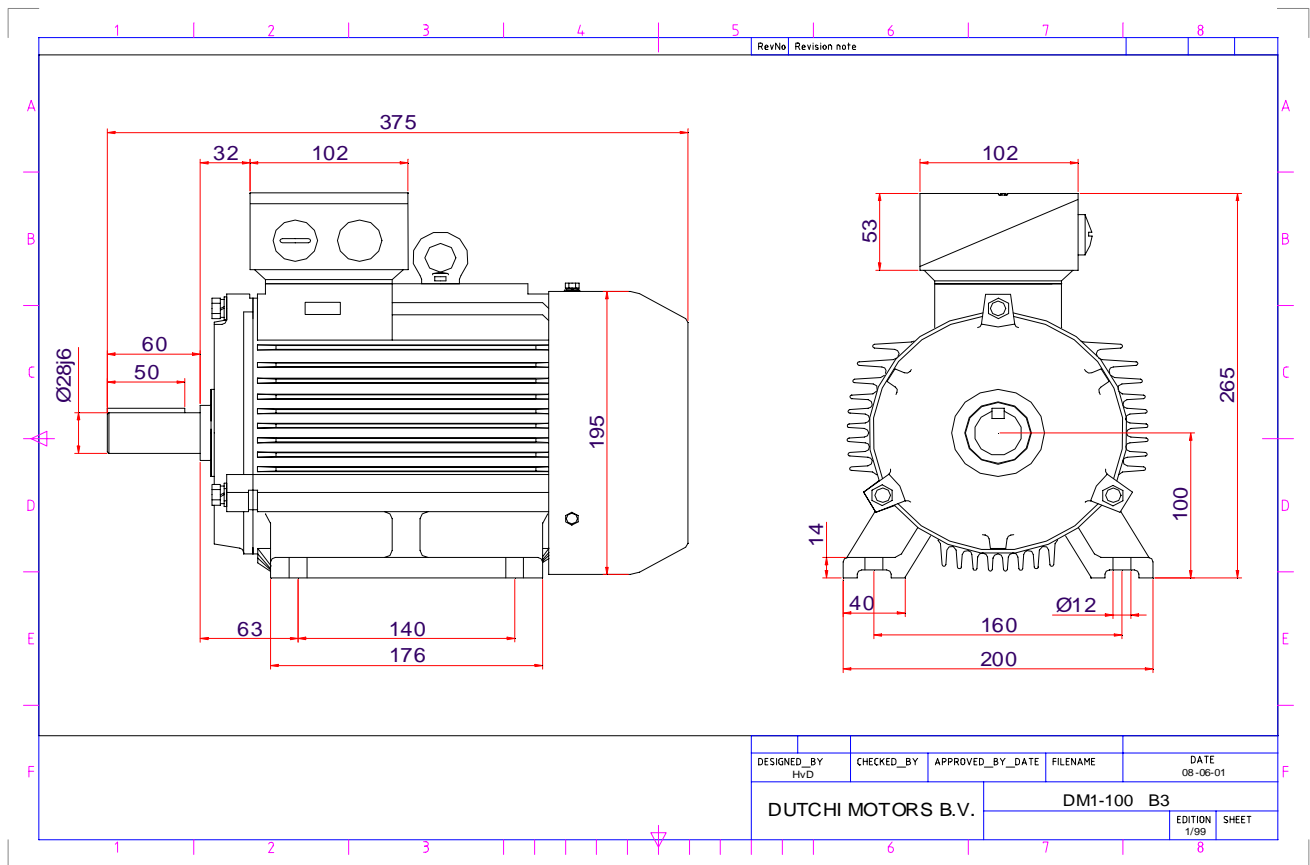


Power is our commodity, the world is our market !



Specification **IEC 60034-1**
 Manufacturer **Dutchi Motors B.V.**
 Motor type **DM1-HE 100L2**
 Rated power **3,00** kW **S1** duty
 Speed **2865** r.p.m
 Voltage **230/400** V
 Frequency **50** Hz
 Connection **Δ / Y**
 Amps full load **9,70 / 5,60** A
 Amps no-load_(400V) **1,90** A
 Enclosure **IP 55**
 Insulation Class **F (temp. rise B (80 K))**

Max. coolant temp. **40°C**
 Max. altitude **1.000** mtr, above sea level
 Comment **3 x PTC 150°C**
 Cable entries **2 x M25x1,5 + 1 x M20x1,5 (ptc)**

Feature **Cast-iron motor**
 Weight **kg**
 Catalog no.
 Warranty **12~18 months**

Efficiency class **EFF 1**
 Load data 100% 75% 50% 25%
 Efficiency **86,7 88,5 89,3 85,7** %
 Power factor **0,89 0,85 0,78 0,55**

Sound pressure level (1m) **49,2** dB(A)
 Resistance R₂₀ (open) **1,86** Ω
 Resistance R₂₀ **Y 3,72** Ω

Full load torque **10,00** Nm
 DOL Starting torque vs FL torque **2,77**
 DOL Pull up torque vs FL torque **1,89**
 DOL Pull out torque vs FL torque **3,10**
 Star-Delta Starting torque vs FL torque **Y - motor**
 Star-Delta Pull up torque vs FL torque **Y - motor**
 Star-Delta Pull out torque vs FL torque **Y - motor**
 DOL Starting current vs FL current **7,26**
 Star Delta Starting current vs FL current **Y - motor**

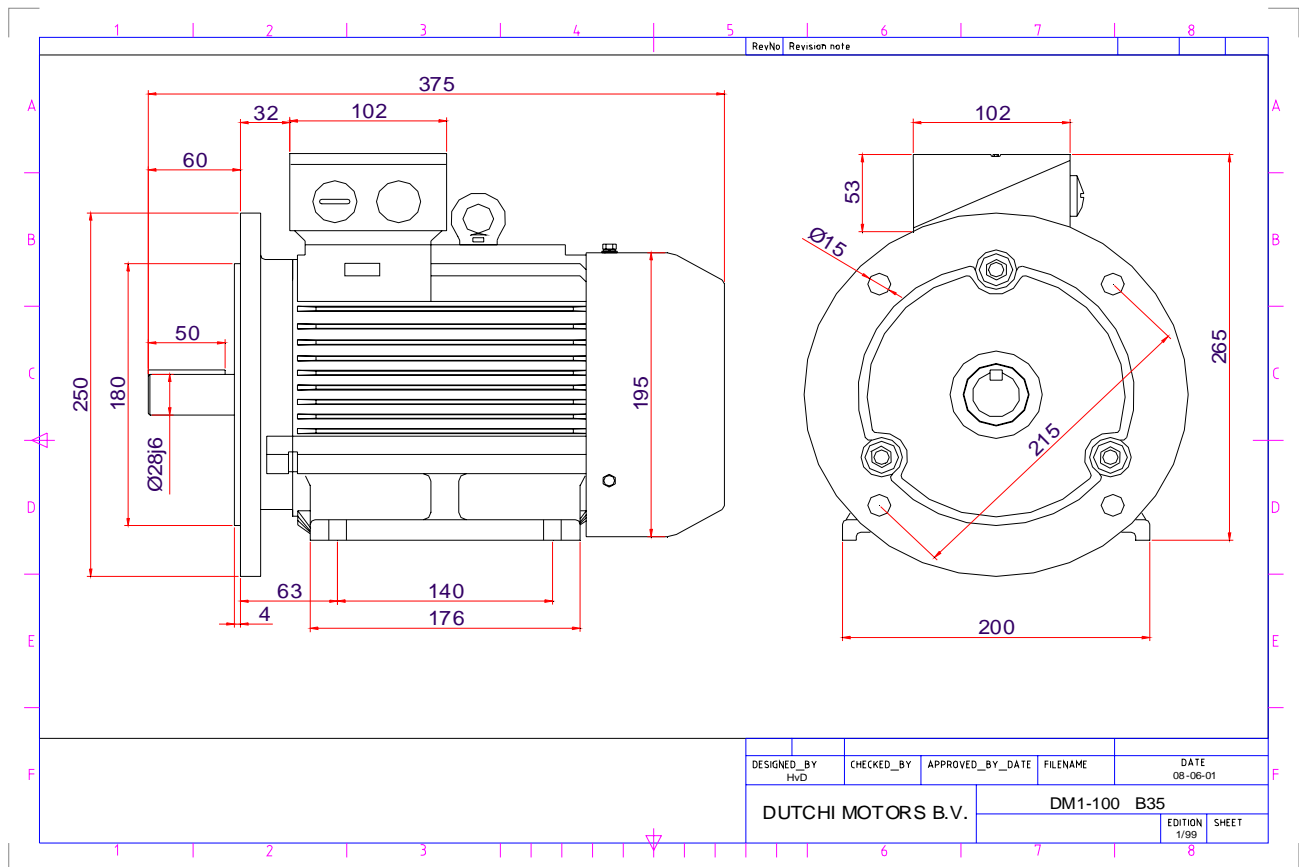
Rotor Inertia **kgm²**

Bearing DE **6206 - ZZ C3**
 Bearing NDE **6206 - ZZ C3**

Extras / Options :

WI	Change	date	sign.
Dutchi Motors B.V.		Discription	date
P.O. Box 5390		Drawing made by :	02-01-02
NL-6802 EJ ARNHEM			
Tel : +31-(0)26 - 3541 600		dutchi.motors@dutchi.nl	
Fax : +31-(0)26 - 3541 650		www.dutchi.com	

Power is our commodity, the world is our market !



Specification **IEC 60034-1**
 Manufacturer **Dutchi Motors B.V.**
 Motor type **DM1-HE 100L2**
 Rated power **3,00** kW **S1** duty
 Speed **2865** r.p.m
 Voltage **230/400** V
 Frequency **50** Hz
 Connection **Δ / Y**
 Amps full load **9,70 / 5,60** A
 Amps no-load_(400V) **1,90** A
 Enclosure **IP 55**
 Insulation Class **F (temp. rise B (80 K))**

Max. coolant temp. **40°C**
 Max. altitude **1.000** mtr, above sea level
 Comment **3 x PTC 150°C**
 Cable entries **2 x M25x1,5 + 1 x M20x1,5 (ptc)**

Feature **Cast-iron motor**
 Weight **kg**
 Catalog no.
 Warranty **12~18 months**

Efficiency class **EFF 1**
 Load data 100% 75% 50% 25%
 Efficiency **86,7 88,5 89,3 85,7** %
 Power factor **0,89 0,85 0,78 0,55**

Sound pressure level (1m) **49,2** dB(A)
 Resistance R₂₀ (open) **1,86** Ω
 Resistance R₂₀ **Y 3,72** Ω

Full load torque **10,00** Nm
 DOL Starting torque vs FL torque **2,77**
 DOL Pull up torque vs FL torque **1,89**
 DOL Pull out torque vs FL torque **3,10**
 Star-Delta Starting torque vs FL torque **Y - motor**
 Star-Delta Pull up torque vs FL torque **Y - motor**
 Star-Delta Pull out torque vs FL torque **Y - motor**
 DOL Starting current vs FL current **7,26**
 Star Delta Starting current vs FL current **Y - motor**

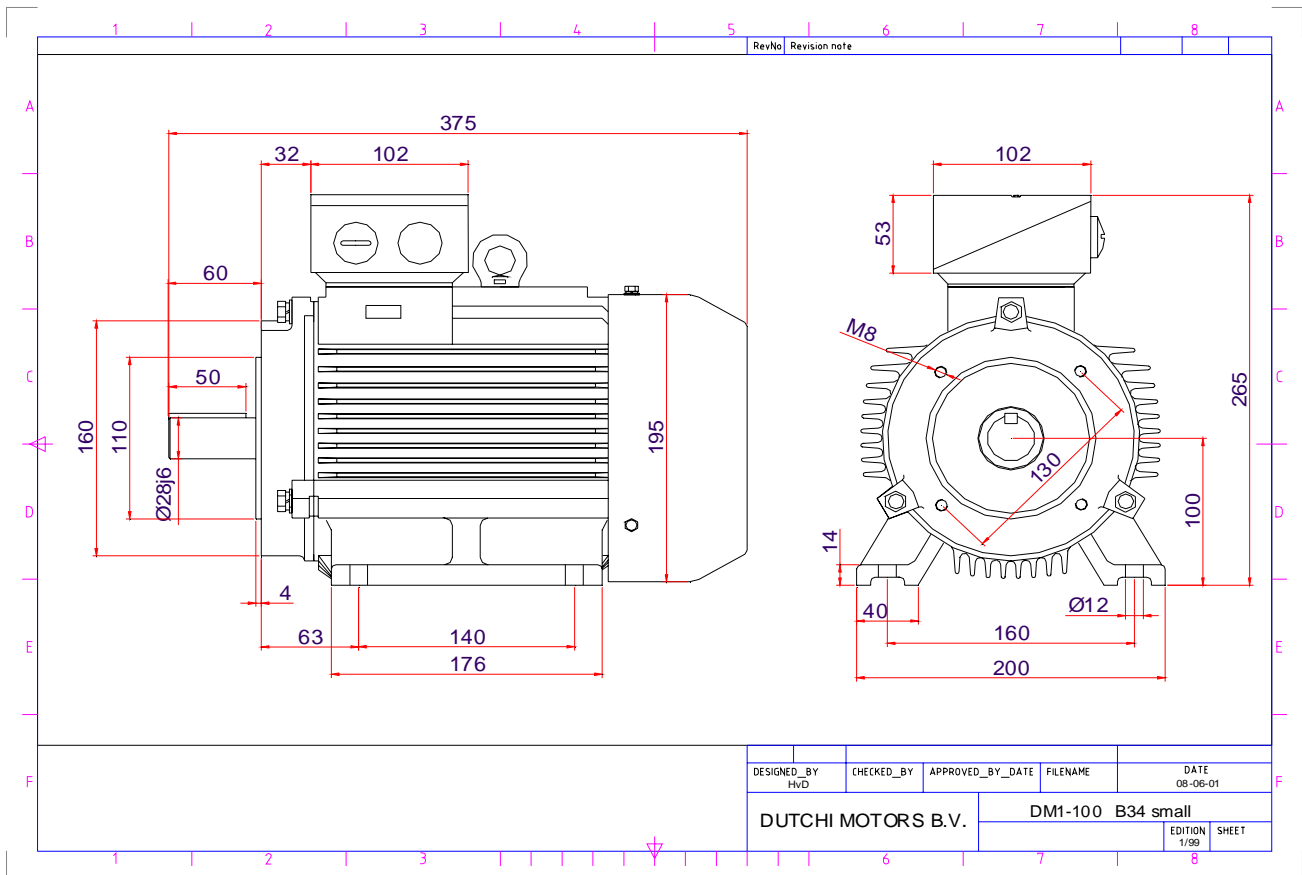
Rotor Inertia **kgm²**

Bearing DE **6206 - ZZ C3**
 Bearing NDE **6206 - ZZ C3**

Extras / Options :

WI	Change	date	sign.
Dutchi Motors B.V.		Description	date
P.O. Box 5390		Drawing made by :	02-01-02
NL-6802 EJ ARNHEM			
Tel : +31-(0)26 - 3541 600		dutchi.motors@dutchi.nl	
Fax : +31-(0)26 - 3541 650		www.dutchi.com	

Power is our commodity, the world is our market !



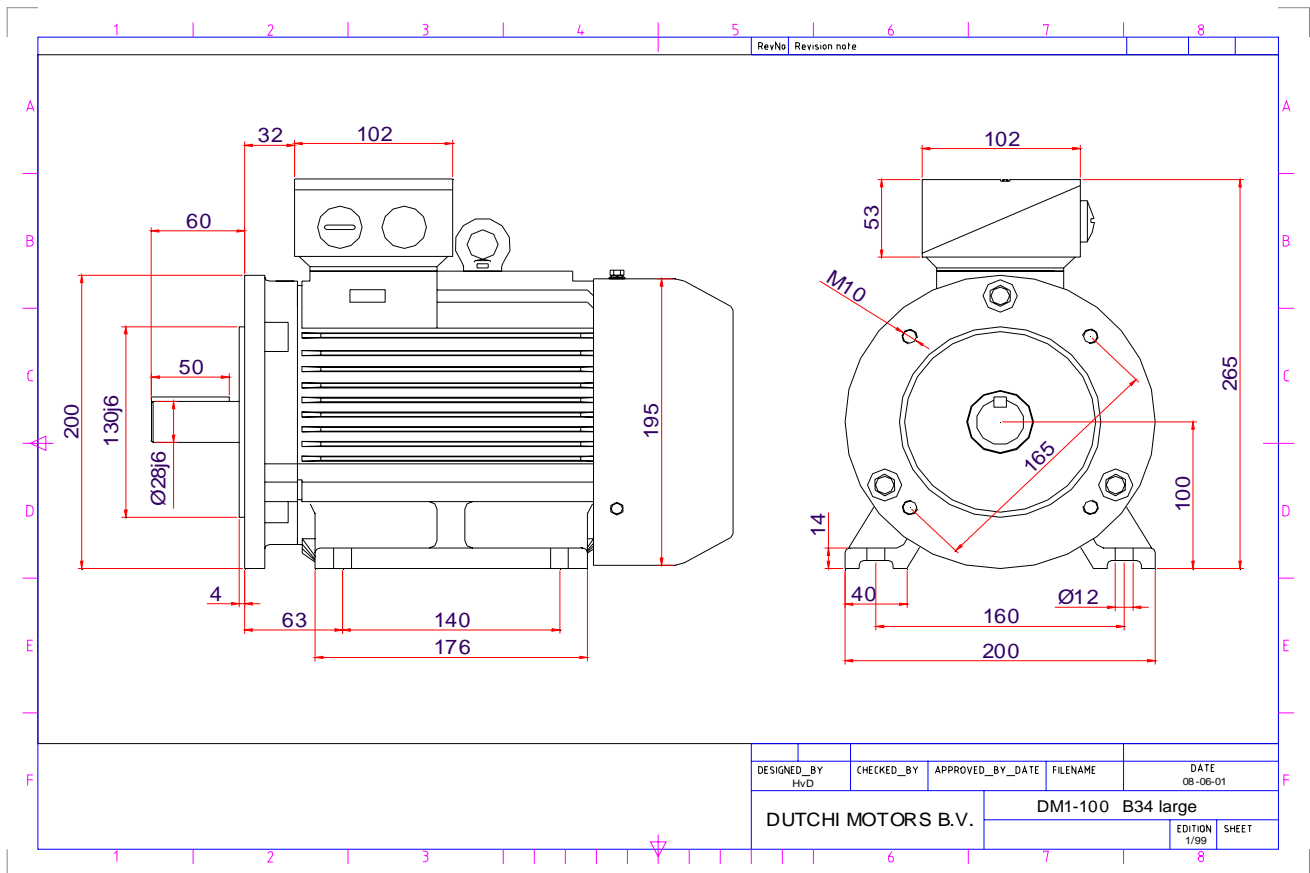
Specification	IEC 60034-1
Manufacturer	Dutchi Motors B.V.
Motor type	DM1-HE 100L2
Rated power	3,00 kW S1 duty
Speed	2865 r.p.m
Voltage	230/400 V
Frequency	50 Hz
Connection	Δ / Y
Amps full load	9,70 / 5,60 A
Amps no-load _(400V)	1,90 A
Enclosure	IP 55
Insulation Class	F (temp. rise B (80 K))
Max. coolant temp.	40°C
Max. altitude	1.000 mtr, above sea level
Comment	3 x PTC 150°C
Cable entries	2 x M25x1,5 + 1 x M20x1,5 (ptc)
Feature	Cast-iron motor
Weight	kg
Catalog no.	
Warranty	12~18 months

Efficiency class	EFF 1			
Load data	100%	75%	50%	25%
Efficiency	86,7	88,5	89,3	85,7 %
Power factor	0,89	0,85	0,78	0,55
Sound pressure level (1m)				49,2 dB(A)
Resistance R ₂₀ (open)				1,86 Ω
Resistance R ₂₀	Y			3,72 Ω
Full load torque				10,00 Nm
DOL Starting torque vs FL torque				2,77
DOL Pull up torque vs FL torque				1,89
DOL Pull out torque vs FL torque				3,10
Star-Delta Starting torque vs FL torque				Y - motor
Star-Delta Pull up torque vs FL torque				Y - motor
Star-Delta Pull out torque vs FL torque				Y - motor
DOL Starting current vs FL current				7,26
Star Delta Starting current vs FL current				Y - motor
Rotor Inertia				kgm²
Bearing DE				6206 - ZZ C3
Bearing NDE				6206 - ZZ C3

Extras / Options :

WI	Change	date	sign.
Dutchi Motors B.V. P.O. Box 5390 NL-6802 EJ ARNHEM Tel : +31-(0)26 - 3541 600 Fax : +31-(0)26 - 3541 650		Description	date
		Drawing made by :	02-01-02
		dutchi.motors@dutchi.nl www.dutchi.com	

Power is our commodity, the world is our market !



DESIGNED_BY HVD	CHECKED_BY	APPROVED_BY_DATE	FILENAME	DATE 08-06-01
DUTCHI MOTORS B.V.			DM1-100 B34 large	
			EDITION 1/99	SHEET

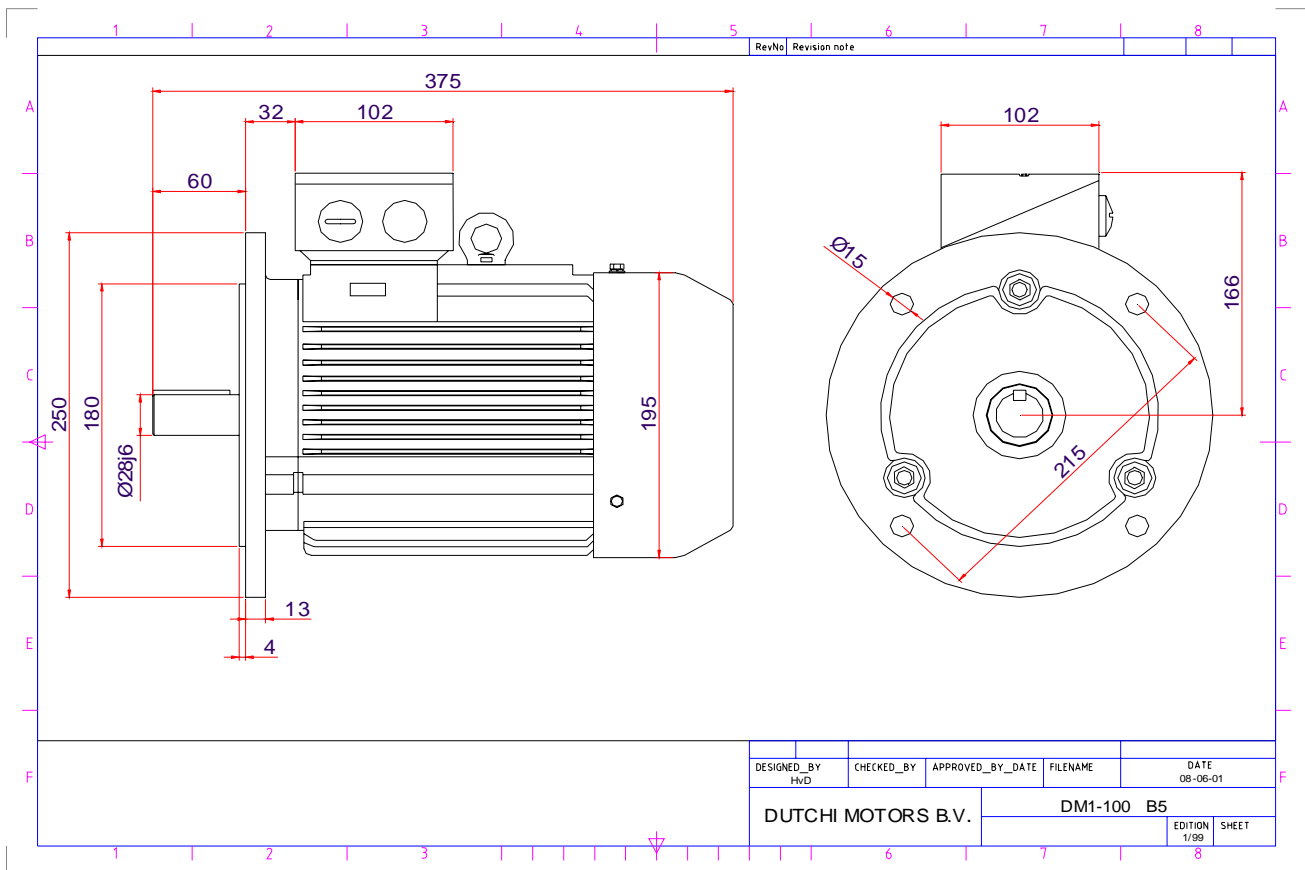
Specification	IEC 60034-1
Manufacturer	Dutchi Motors B.V.
Motor type	DM1-HE 100L2
Rated power	3,00 kW S1 duty
Speed	2865 r.p.m
Voltage	230/400 V
Frequency	50 Hz
Connection	Δ / Y
Amps full load	9,70 / 5,60 A
Amps no-load _(400V)	1,90 A
Enclosure	IP 55
Insulation Class	F (temp. rise B (80 K))
Max. coolant temp.	40°C
Max. altitude	1.000 mtr, above sea level
Comment	3 x PTC 150°C
Cable entries	2 x M25x1,5 + 1 x M20x1,5 (ptc)
Feature	Cast-iron motor
Weight	kg
Catalog no.	
Warranty	12~18 months

Efficiency class	EFF 1			
Load data	100%	75%	50%	25%
Efficiency	86,7	88,5	89,3	85,7 %
Power factor	0,89	0,85	0,78	0,55
Sound pressure level (1m)				49,2 dB(A)
Resistance R ₂₀ (open)				1,86 Ω
Resistance R ₂₀	Y		3,72	Ω
Full load torque				10,00 Nm
DOL Starting torque vs FL torque				2,77
DOL Pull up torque vs FL torque				1,89
DOL Pull out torque vs FL torque				3,10
Star-Delta Starting torque vs FL torque				Y - motor
Star-Delta Pull up torque vs FL torque				Y - motor
Star-Delta Pull out torque vs FL torque				Y - motor
DOL Starting current vs FL current				7,26
Star Delta Starting current vs FL current				Y - motor
Rotor Inertia				kgm²
Bearing DE				6206 - ZZ C3
Bearing NDE				6206 - ZZ C3

Extras / Options :

WI	Change	date	sign.
Dutchi Motors B.V.		Description	date
P.O. Box 5390		Drawing made by :	02-01-02
NL-6802 EJ ARNHEM			
Tel : +31-(0)26 - 3541 600		dutchi.motors@dutchi.nl	
Fax : +31-(0)26 - 3541 650		www.dutchi.com	

Power is our commodity, the world is our market !



Specification **IEC 60034-1**
 Manufacturer **Dutchi Motors B.V.**
 Motor type **DM1-HE 100L2**
 Rated power **3,00** kW **S1** duty
 Speed **2865** r.p.m
 Voltage **230/400** V
 Frequency **50** Hz
 Connection **Δ / Y**
 Amps full load **9,70 / 5,60** A
 Amps no-load_(400V) **1,90** A
 Enclosure **IP 55**
 Insulation Class **F (temp. rise B (80 K))**

Max. coolant temp. **40°C**
 Max. altitude **1.000** mtr, above sea level
 Comment **3 x PTC 150°C**
 Cable entries **2 x M25x1,5 + 1 x M20x1,5 (ptc)**

Feature **Cast-iron motor**
 Weight **kg**
 Catalog no.
 Warranty **12~18 months**

Efficiency class **EFF 1**
 Load data 100% 75% 50% 25%
 Efficiency **86,7 88,5 89,3 85,7** %
 Power factor **0,89 0,85 0,78 0,55**

Sound pressure level (1m) **49,2** dB(A)
 Resistance R₂₀ (open) **1,86** Ω
 Resistance R₂₀ **Y 3,72** Ω

Full load torque **10,00** Nm
 DOL Starting torque vs FL torque **2,77**
 DOL Pull up torque vs FL torque **1,89**
 DOL Pull out torque vs FL torque **3,10**
 Star-Delta Starting torque vs FL torque **Y - motor**
 Star-Delta Pull up torque vs FL torque **Y - motor**
 Star-Delta Pull out torque vs FL torque **Y - motor**
 DOL Starting current vs FL current **7,26**
 Star Delta Starting current vs FL current **Y - motor**

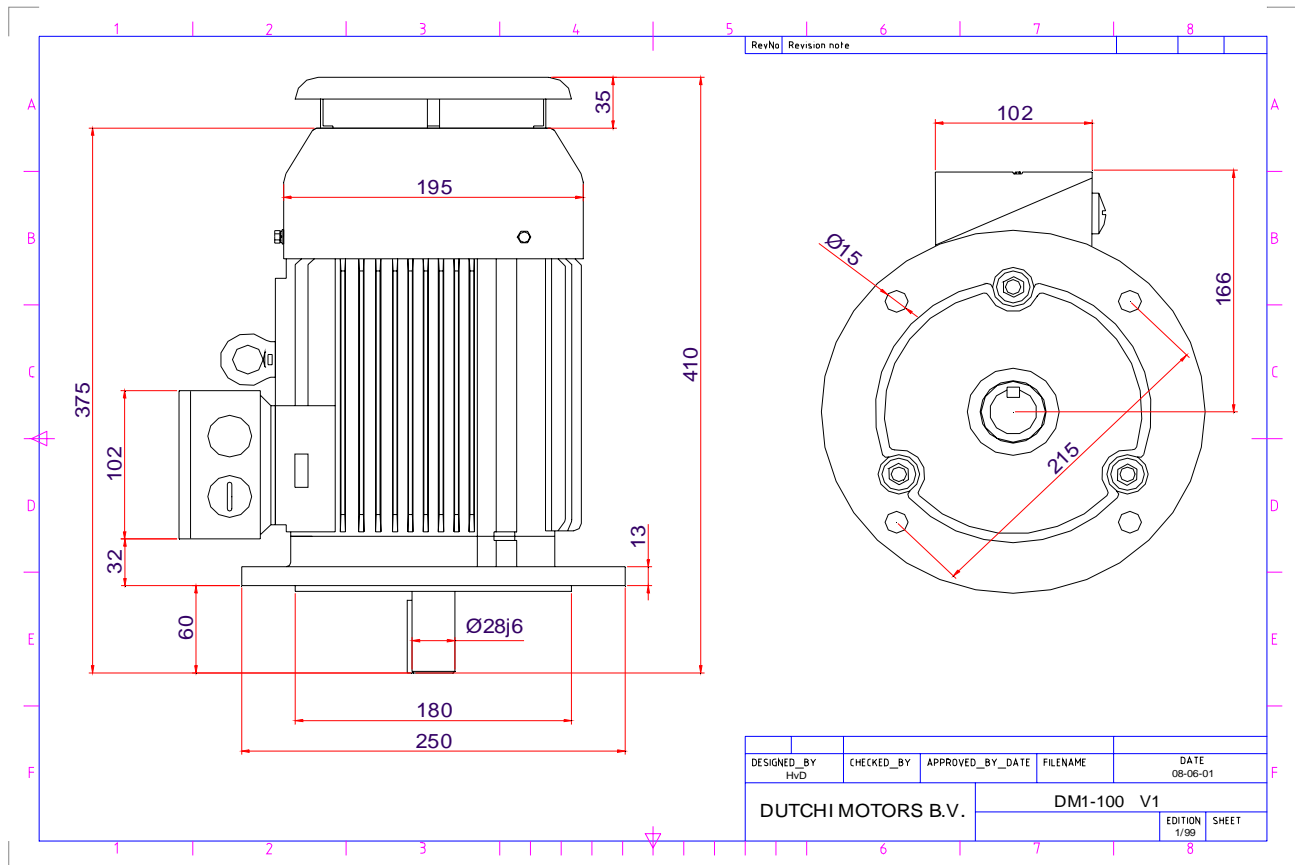
Rotor Inertia **kgm²**

Bearing DE **6206 - ZZ C3**
 Bearing NDE **6206 - ZZ C3**

Extras / Options :

WI	Change	date	sign.
Dutchi Motors B.V.		Description	date
P.O. Box 5390		Drawing made by :	02-01-02
NL-6802 EJ ARNHEM			
Tel : +31-(0)26 - 3541 600		dutchi.motors@dutchi.nl	
Fax : +31-(0)26 - 3541 650		www.dutchi.com	

Power is our commodity, the world is our market !



DESIGNED_BY HVD	CHECKED_BY	APPROVED_BY_DATE	FILENAME	DATE 08-06-01
DUTCHI MOTORS B.V.			DM1-100 V1	EDITION 1/99
				SHEET

Specification **IEC 60034-1**
 Manufacturer **Dutchi Motors B.V.**
 Motor type **DM1-HE 100L2**
 Rated power **3,00** kW **S1** duty
 Speed **2865** r.p.m
 Voltage **230/400** V
 Frequency **50** Hz
 Connection **Δ / Y**
 Amps full load **9,70 / 5,60** A
 Amps no-load_(400V) **1,90** A
 Enclosure **IP 55**
 Insulation Class **F (temp. rise B (80 K))**

Max. coolant temp. **40°C**
 Max. altitude **1.000** mtr, above sea level
 Comment **3 x PTC 150°C**
 Cable entries **2 x M25x1,5 + 1 x M20x1,5 (ptc)**

Feature **Cast-iron motor**
 Weight **kg**
 Catalog no.
 Warranty **12~18 months**

Efficiency class **EFF 1**
 Load data 100% 75% 50% 25%
 Efficiency **86,7 88,5 89,3 85,7** %
 Power factor **0,89 0,85 0,78 0,55**

Sound pressure level (1m) **49,2** dB(A)
 Resistance R₂₀ (open) **1,86** Ω
 Resistance R₂₀ **Y 3,72** Ω

Full load torque **10,00** Nm
 DOL Starting torque vs FL torque **2,77**
 DOL Pull up torque vs FL torque **1,89**
 DOL Pull out torque vs FL torque **3,10**
 Star-Delta Starting torque vs FL torque **Y - motor**
 Star-Delta Pull up torque vs FL torque **Y - motor**
 Star-Delta Pull out torque vs FL torque **Y - motor**
 DOL Starting current vs FL current **7,26**
 Star Delta Starting current vs FL current **Y - motor**

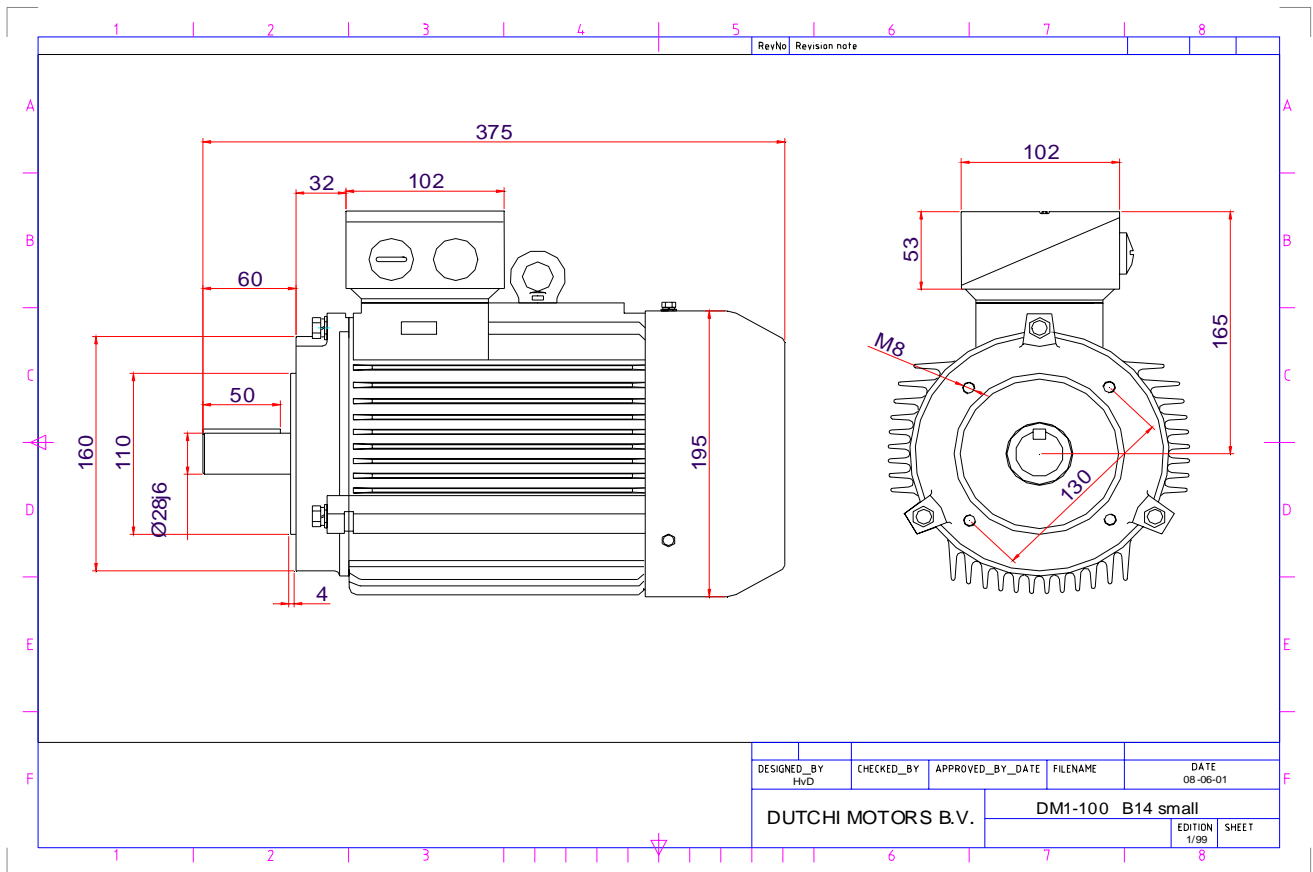
Rotor Inertia **kgm²**

Bearing DE **6206 - ZZ C3**
 Bearing NDE **6206 - ZZ C3**

Extras / Options :

WI	Change	date	sign.
Dutchi Motors B.V. P.O. Box 5390 NL-6802 EJ ARNHEM Tel : +31-(0)26 - 3541 600 Fax : +31-(0)26 - 3541 650		Description Drawing made by : 02-01-02	date 02-01-02
		sign. HvD	
		dutchi.motors@dutchi.nl www.dutchi.com	

Power is our commodity, the world is our market !



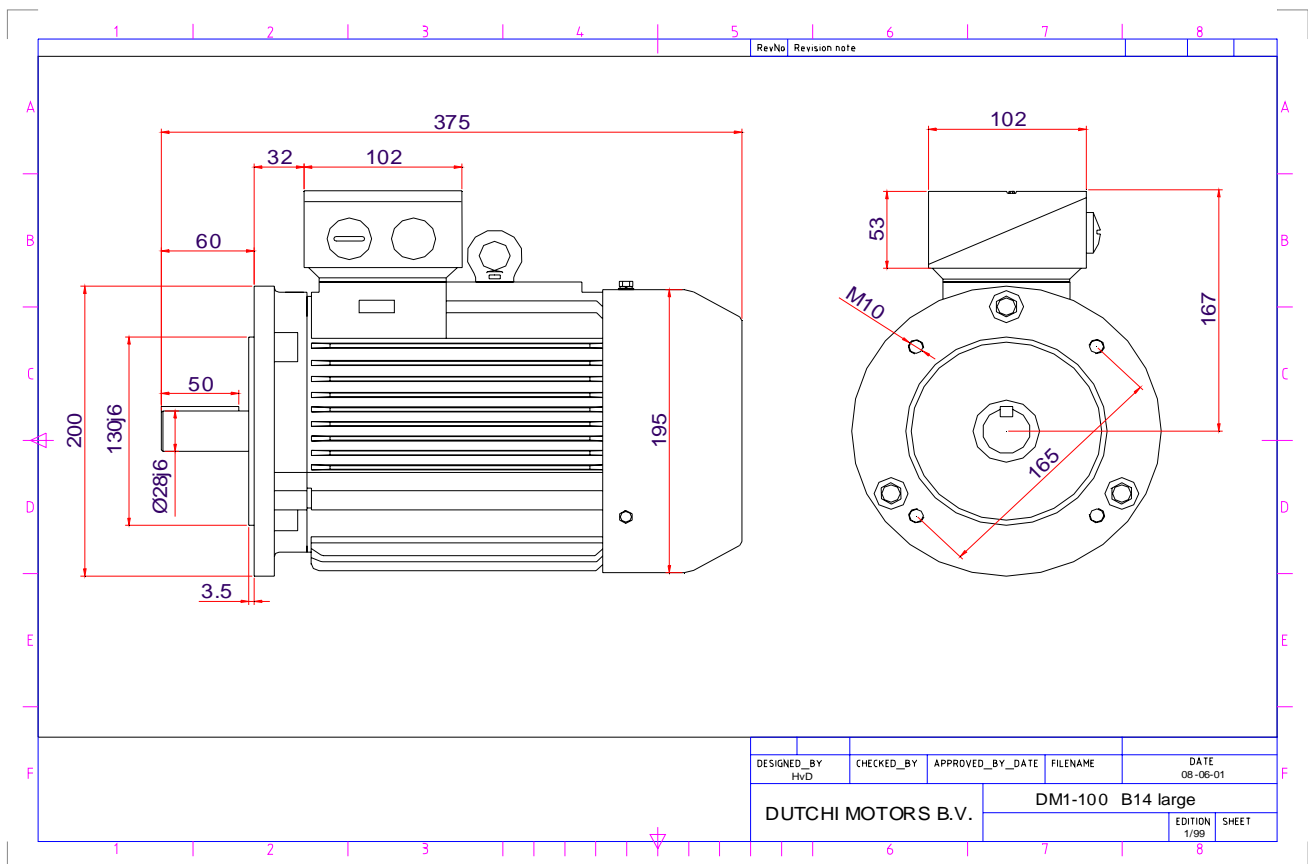
Specification	IEC 60034-1
Manufacturer	Dutchi Motors B.V.
Motor type	DM1-HE 100L2
Rated power	3,00 kW S1 duty
Speed	2865 r.p.m
Voltage	230/400 V
Frequency	50 Hz
Connection	Δ / Y
Amps full load	9,70 / 5,60 A
Amps no-load _(400V)	1,90 A
Enclosure	IP 55
Insulation Class	F (temp. rise B (80 K))
Max. coolant temp.	40°C
Max. altitude	1.000 mtr, above sea level
Comment	3 x PTC 150°C
Cable entries	2 x M25x1,5 + 1 x M20x1,5 (ptc)
Feature	Cast-iron motor
Weight	kg
Catalog no.	
Warranty	12~18 months

Efficiency class	EFF 1			
Load data	100%	75%	50%	25%
Efficiency	86,7	88,5	89,3	85,7 %
Power factor	0,89	0,85	0,78	0,55
Sound pressure level (1m)				49,2 dB(A)
Resistance R ₂₀ (open)				1,86 Ω
Resistance R ₂₀	Y			3,72 Ω
Full load torque				10,00 Nm
DOL Starting torque vs FL torque				2,77
DOL Pull up torque vs FL torque				1,89
DOL Pull out torque vs FL torque				3,10
Star-Delta Starting torque vs FL torque				Y - motor
Star-Delta Pull up torque vs FL torque				Y - motor
Star-Delta Pull out torque vs FL torque				Y - motor
DOL Starting current vs FL current				7,26
Star Delta Starting current vs FL current				Y - motor
Rotor Inertia				kgm²
Bearing DE				6206 - ZZ C3
Bearing NDE				6206 - ZZ C3

Extras / Options :

WI	Change	date	sign.
Dutchi Motors B.V.		Description	date
P.O. Box 5390		Drawing made by :	02-01-02
NL-6802 EJ ARNHEM			
Tel : +31-(0)26 - 3541 600		dutchi.motors@dutchi.nl	
Fax : +31-(0)26 - 3541 650		www.dutchi.com	

Power is our commodity, the world is our market !



Specification	IEC 60034-1
Manufacturer	Dutchi Motors B.V.
Motor type	DM1-HE 100L2
Rated power	3,00 kW S1 duty
Speed	2865 r.p.m
Voltage	230/400 V
Frequency	50 Hz
Connection	Δ / Y
Amps full load	9,70 / 5,60 A
Amps no-load _(400V)	1,90 A
Enclosure	IP 55
Insulation Class	F (temp. rise B (80 K))
Max. coolant temp.	40°C
Max. altitude	1.000 mtr, above sea level
Comment	3 x PTC 150°C
Cable entries	2 x M25x1,5 + 1 x M20x1,5 (ptc)
Feature	Cast-iron motor
Weight	kg
Catalog no.	
Warranty	12~18 months

Efficiency class	EFF 1			
Load data	100%	75%	50%	25%
Efficiency	86,7	88,5	89,3	85,7 %
Power factor	0,89	0,85	0,78	0,55
Sound pressure level (1m)				49,2 dB(A)
Resistance R ₂₀ (open)				1,86 Ω
Resistance R ₂₀	Y			3,72 Ω
Full load torque				10,00 Nm
DOL Starting torque vs FL torque				2,77
DOL Pull up torque vs FL torque				1,89
DOL Pull out torque vs FL torque				3,10
Star-Delta Starting torque vs FL torque				Y - motor
Star-Delta Pull up torque vs FL torque				Y - motor
Star-Delta Pull out torque vs FL torque				Y - motor
DOL Starting current vs FL current				7,26
Star Delta Starting current vs FL current				Y - motor
Rotor Inertia				kgm ²
Bearing DE				6206 - ZZ C3
Bearing NDE				6206 - ZZ C3

Extras / Options :

WI	Change	date	sign.
Dutchi Motors B.V. P.O. Box 5390 NL-6802 EJ ARNHEM Tel : +31-(0)26 - 3541 600 Fax : +31-(0)26 - 3541 650		Discription Drawing made by : 02-01-02	date sign. HVD
		dutchi.motors@dutchi.nl www.dutchi.com	