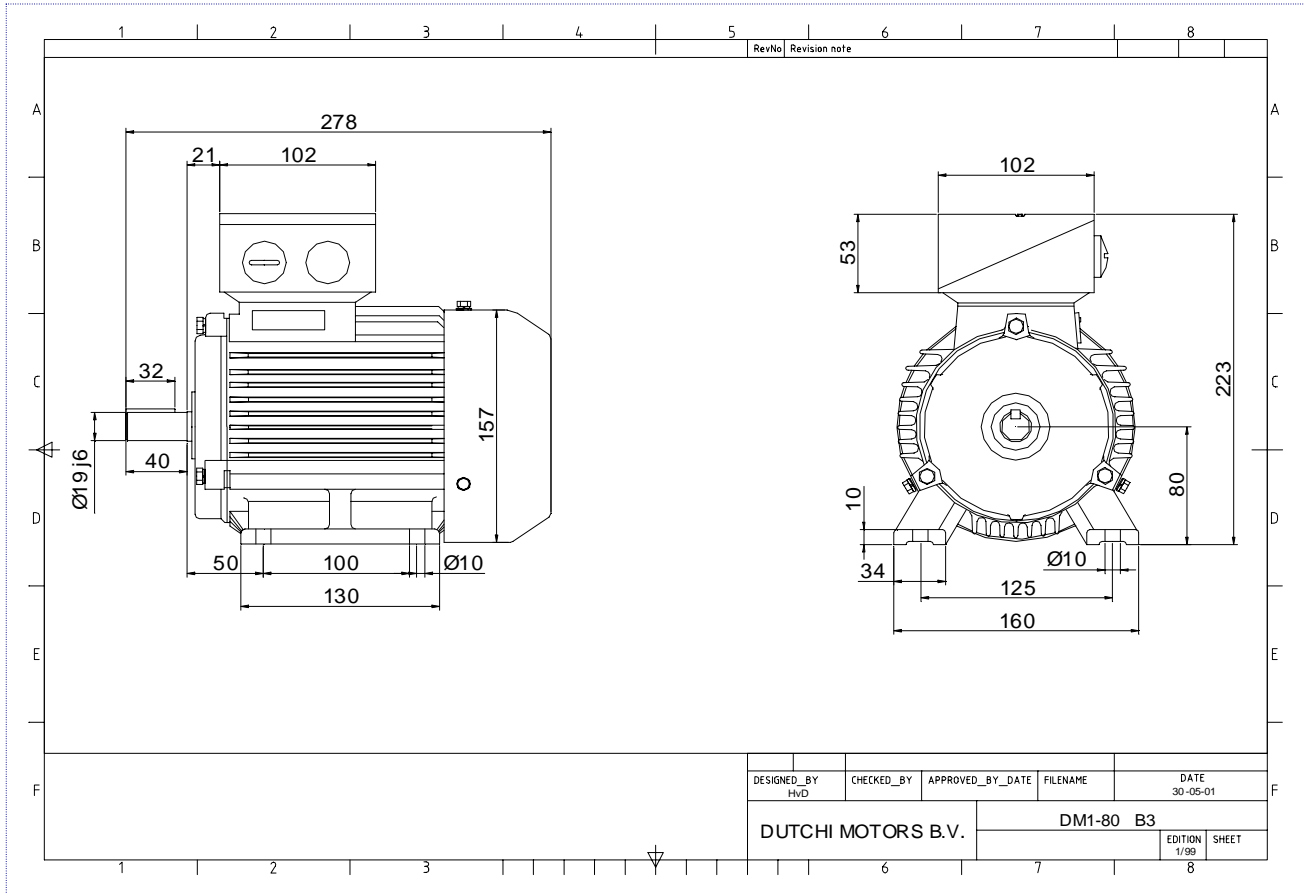


Power is our commodity, the world is our market !



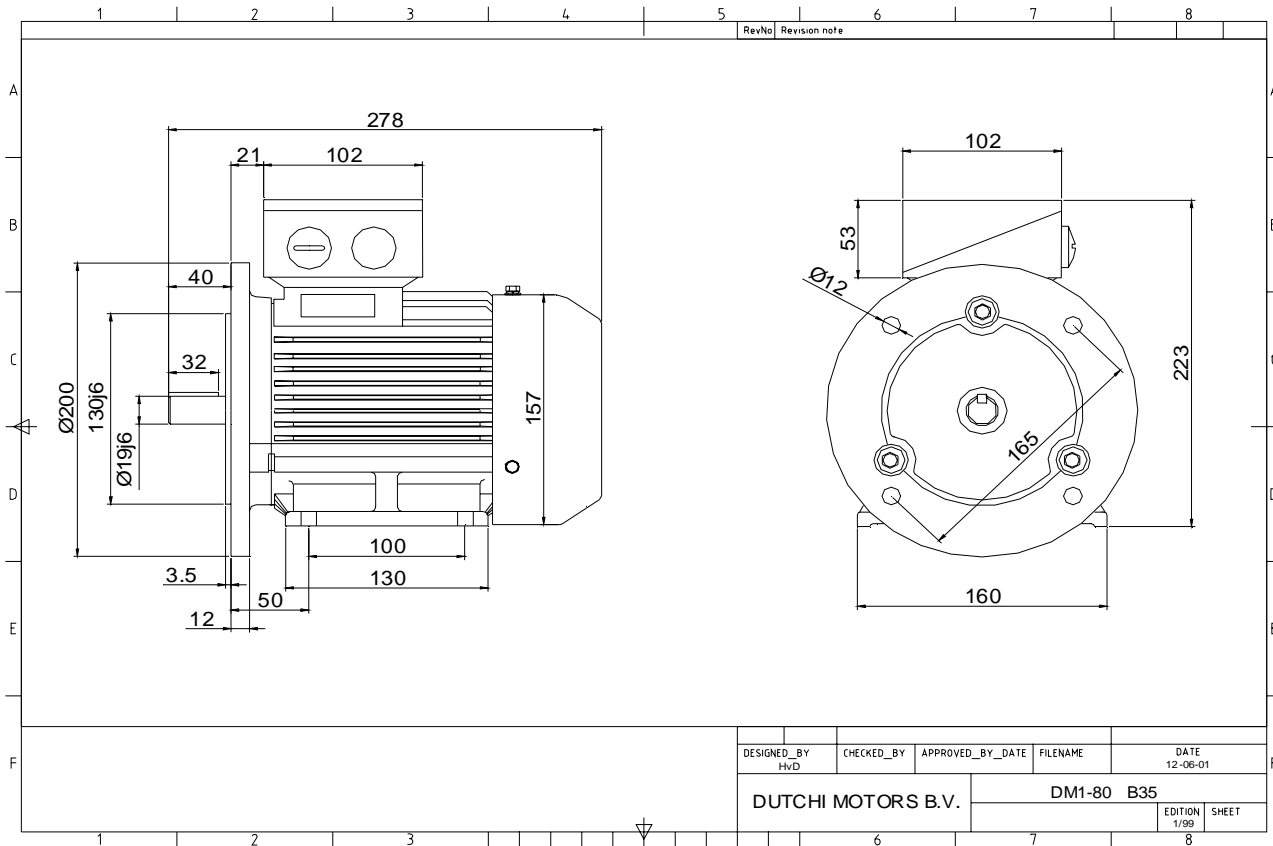
Specification	<b>IEC 60034-1</b>
Manufacturer	<b>Dutchi Motors B.V.</b>
Motor type	<b>DM1- 80 G4</b>
Rated power	<b>0,75</b> kW <b>S1</b> duty
Speed	<b>1418</b> r.p.m
Voltage	<b>230 / 400</b> V
Frequency	<b>50</b> Hz
Connection	<b>Δ / Y</b>
Amps full load	<b>3,28 / 1,89</b> A
Amps no-load(400V)	<b>1,41</b> A
Enclosure	<b>IP 55</b>
Insulation Class	<b>F (temp. rise B (80 K))</b>
Max. coolant temp.	<b>40°C</b>
Max. altitude	<b>1.000</b> mtr, above sea level
Comment	<b>3 x PTC 150°C</b>
Cable entries	<b>2 x M25x1,5 + 1 x M20x1,5 (ptc)</b>
Feature	<b>Cast-iron motor</b>
Weight	<b>18,0</b> kg
Catalog no.	<b>11143075D</b>
Warranty	<b>12~18 months</b>

Efficiency class	<b>N/A</b>			
Load data	100%	75%	50%	25%
Efficiency	<b>73,0</b>	<b>71,7</b>	<b>66,4</b>	<b>51,3</b> %
Power factor	<b>0,78</b>	<b>0,68</b>	<b>0,54</b>	<b>0,36</b>
Sound pressure level (1m)				<b>56,4</b> dB(A)
Resistance R20 (open)				<b>9,32</b> Ω
Resistance R20	<b>Y</b>			<b>18,65</b> Ω
Full load torque				<b>5,05</b> Nm
DOL Starting torque vs FL torque				<b>2,63</b>
DOL Pull up torque vs FL torque				<b>1,68</b>
DOL Pull out torque vs FL torque				<b>2,96</b>
Star-Delta Starting torque vs FL torque				<b>Y - motor</b>
Star-Delta Pull up torque vs FL torque				<b>Y - motor</b>
Star-Delta Pull out torque vs FL torque				<b>Y - motor</b>
DOL Starting current vs FL current				<b>5,86</b>
Star Delta Starting current vs FL current				<b>Y - motor</b>
Rotor Inertia				<b>0,0021</b> kgm2
Bearing DE				<b>6204 - ZZ</b>
Bearing NDE				<b>6204 - ZZ</b>

Extras / Options :

WI	Change	date	sign.
<b>Dutchi Motors B.V.</b> P.O. Box 5390 NL-6802 EJ ARNHEM Tel : +31-(0)26 - 3541 600 Fax : +31-(0)26 - 3541 650		Discription	date
		Drawing made by :	19-04-04
		sign.	HvD
		<b>dutchi.motors@dutchi.nl</b> <b>www.dutchi.com</b>	

Power is our commodity, the world is our market !



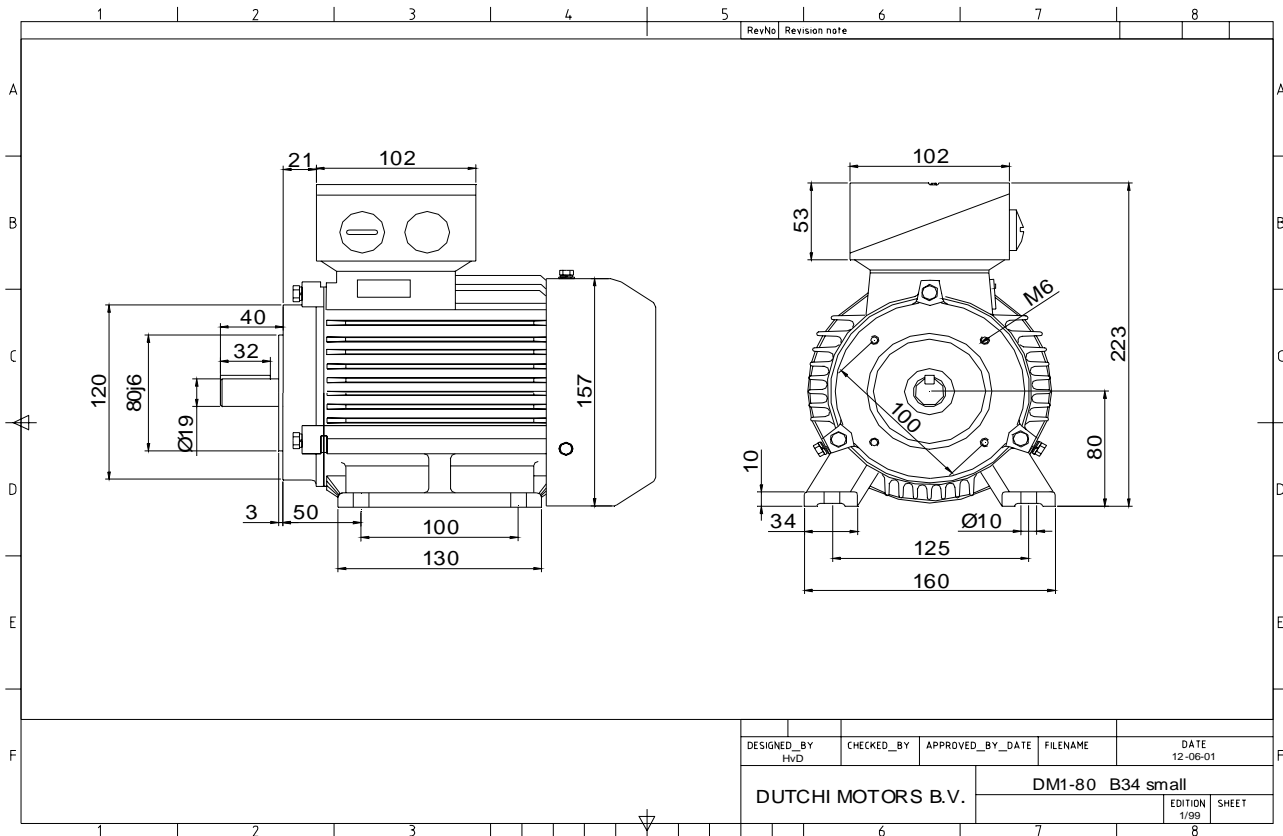
Specification	<b>IEC 60034-1</b>
Manufacturer	<b>Dutchi Motors B.V.</b>
Motor type	<b>DM1- 80 G4</b>
Rated power	<b>0,75</b> kW <b>S1</b> duty
Speed	<b>1418</b> r.p.m
Voltage	<b>230 / 400</b> V
Frequency	<b>50</b> Hz
Connection	<b>Δ / Y</b>
Amps full load	<b>3,28 / 1,89</b> A
Amps no-load(400V)	<b>1,41</b> A
Enclosure	<b>IP 55</b>
Insulation Class	<b>F (temp. rise B (80 K))</b>
Max. coolant temp.	<b>40°C</b>
Max. altitude	<b>1.000</b> mtr, above sea level
Comment	<b>3 x PTC 150°C</b>
Cable entries	<b>2 x M25x1,5 + 1 x M20x1,5 (ptc)</b>
Feature	<b>Cast-iron motor</b>
Weight	<b>18,0</b> kg
Catalog no.	<b>11524075D</b>
Warranty	<b>12~18 months</b>

Efficiency class	<b>N/A</b>			
Load data	100%	75%	50%	25%
Efficiency	<b>73,0</b>	<b>71,7</b>	<b>66,4</b>	<b>51,3</b> %
Power factor	<b>0,78</b>	<b>0,68</b>	<b>0,54</b>	<b>0,36</b>
Sound pressure level (1m)				<b>56,4</b> dB(A)
Resistance R20 (open)				<b>9,32</b> Ω
Resistance R20	<b>Y</b>		<b>18,65</b>	Ω
Full load torque				<b>5,05</b> Nm
DOL Starting torque vs FL torque				<b>2,63</b>
DOL Pull up torque vs FL torque				<b>1,68</b>
DOL Pull out torque vs FL torque				<b>2,96</b>
Star-Delta Starting torque vs FL torque				<b>Y - motor</b>
Star-Delta Pull up torque vs FL torque				<b>Y - motor</b>
Star-Delta Pull out torque vs FL torque				<b>Y - motor</b>
DOL Starting current vs FL current				<b>5,86</b>
Star Delta Starting current vs FL current				<b>Y - motor</b>
Rotor Inertia				<b>0,0021</b> kgm <sup>2</sup>
Bearing DE				<b>6204 - ZZ</b>
Bearing NDE				<b>6204 - ZZ</b>

Extras / Options :

WI	Change	date	sign.
<b>Dutchi Motors B.V.</b> P.O. Box 5390 NL-6802 EJ ARNHEM Tel : +31-(0)26 - 3541 600 Fax : +31-(0)26 - 3541 650		Discription Drawing made by :	date 19-04-04 sign. HvD
dutchi.motors@dutchi.nl www.dutchi.com			

Power is our commodity, the world is our market !



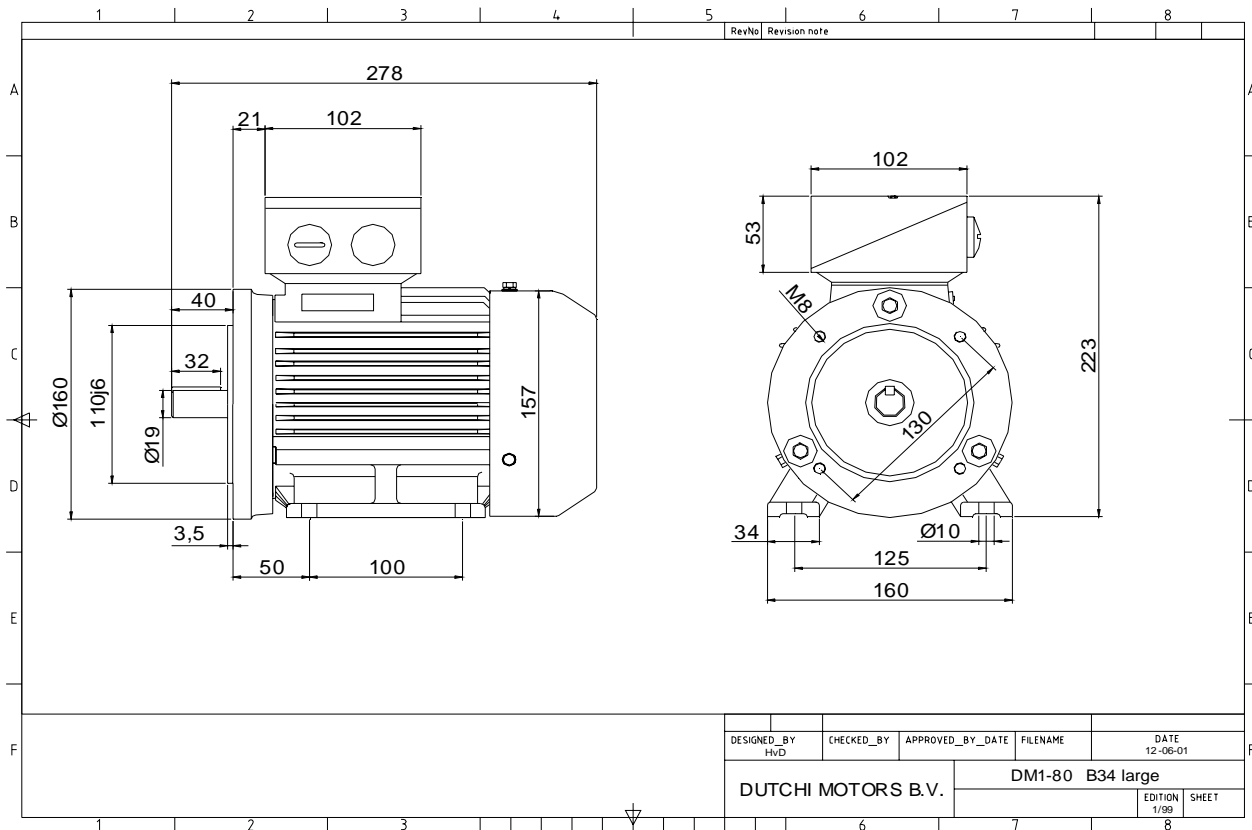
Specification	<b>IEC 60034-1</b>
Manufacturer	<b>Dutchi Motors B.V.</b>
Motor type	<b>DM1- 80 G4</b>
Rated power	<b>0,75</b> kW <b>S1</b> duty
Speed	<b>1418</b> r.p.m
Voltage	<b>230 / 400</b> V
Frequency	<b>50</b> Hz
Connection	<b>Δ / Y</b>
Amps full load	<b>3,28 / 1,89</b> A
Amps no-load(400V)	<b>1,41</b> A
Enclosure	<b>IP 55</b>
Insulation Class	<b>F (temp. rise B (80 K))</b>
Max. coolant temp.	<b>40°C</b>
Max. altitude	<b>1.000</b> mtr, above sea level
Comment	<b>3 x PTC 150°C</b>
Cable entries	<b>2 x M25x1,5 + 1 x M20x1,5 (ptc)</b>
Feature	<b>Cast-iron motor</b>
Weight	<b>18,0</b> kg
Catalog no.	<b>11624075D</b>
Warranty	<b>12~18 months</b>

Efficiency class	<b>N/A</b>			
Load data	100%	75%	50%	25%
Efficiency	<b>73,0</b>	<b>71,7</b>	<b>66,4</b>	<b>51,3</b> %
Power factor	<b>0,78</b>	<b>0,68</b>	<b>0,54</b>	<b>0,36</b>
Sound pressure level (1m)				<b>56,4</b> dB(A)
Resistance R20 (open)				<b>9,32</b> Ω
Resistance R20	<b>Y</b>		<b>18,65</b> Ω	
Full load torque				<b>5,05</b> Nm
DOL Starting torque vs FL torque				<b>2,63</b>
DOL Pull up torque vs FL torque				<b>1,68</b>
DOL Pull out torque vs FL torque				<b>2,96</b>
Star-Delta Starting torque vs FL torque				<b>Y - motor</b>
Star-Delta Pull up torque vs FL torque				<b>Y - motor</b>
Star-Delta Pull out torque vs FL torque				<b>Y - motor</b>
DOL Starting current vs FL current				<b>5,86</b>
Star Delta Starting current vs FL current				<b>Y - motor</b>
Rotor Inertia				<b>0,0021</b> kgm <sup>2</sup>
Bearing DE				<b>6204 - ZZ</b>
Bearing NDE				<b>6204 - ZZ</b>

Extras / Options :

WI	Change	date	sign.
<b>Dutchi Motors B.V.</b> P.O. Box 5390 NL-6802 EJ ARNHEM Tel : +31-(0)26 - 3541 600 Fax : +31-(0)26 - 3541 650		Description	date
		Drawing made by :	19-04-04
		<b>dutchi.motors@dutchi.nl</b> <b>www.dutchi.com</b>	

Power is our commodity, the world is our market !



Specification **IEC 60034-1**  
 Manufacturer **Dutchi Motors B.V.**  
 Motor type **DM1- 80 G4**  
 Rated power **0,75** kW **S1** duty  
 Speed **1418** r.p.m  
 Voltage **230 / 400** V  
 Frequency **50** Hz  
 Connection **Δ / Y**  
 Amps full load **3,28 / 1,89** A  
 Amps no-load(400V) **1,41** A  
 Enclosure **IP 55**  
 Insulation Class **F (temp. rise B (80 K))**

Max. coolant temp. **40°C**  
 Max. altitude **1.000** mtr, above sea level  
 Comment **3 x PTC 150°C**  
 Cable entries **2 x M25x1,5 + 1 x M20x1,5 (ptc)**

Feature **Cast-iron motor**  
 Weight **18,0** kg  
 Catalog no. **11724075D**  
 Warranty **12~18 months**

Efficiency class **N/A**  
 Load data 100% 75% 50% 25%  
 Efficiency **73,0 71,7 66,4 51,3** %  
 Power factor **0,78 0,68 0,54 0,36**

Sound pressure level (1m) **56,4** dB(A)  
 Resistance R20 (open) **9,32** Ω  
 Resistance R20 **Y 18,65** Ω

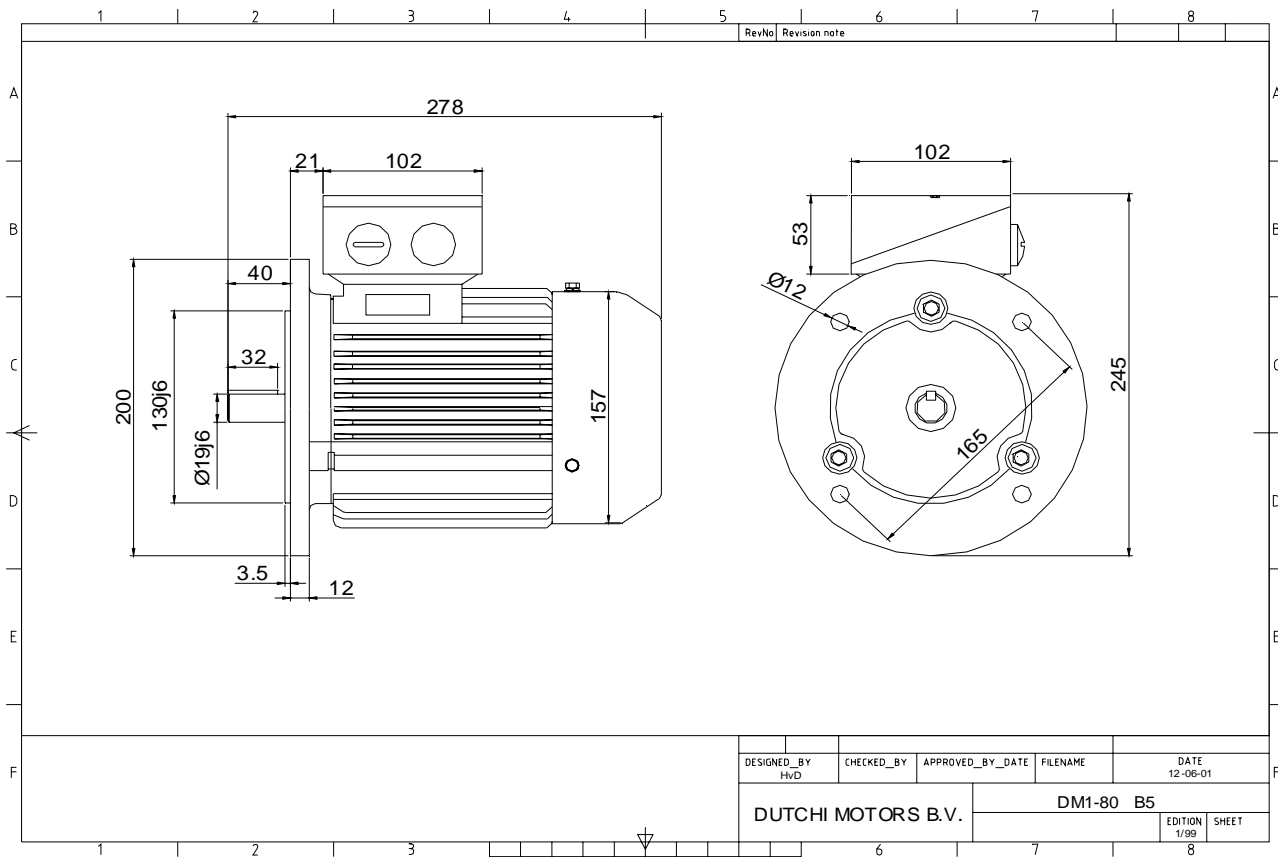
Full load torque **5,05** Nm  
 DOL Starting torque vs FL torque **2,63**  
 DOL Pull up torque vs FL torque **1,68**  
 DOL Pull out torque vs FL torque **2,96**  
 Star-Delta Starting torque vs FL torque **Y - motor**  
 Star-Delta Pull up torque vs FL torque **Y - motor**  
 Star-Delta Pull out torque vs FL torque **Y - motor**  
 DOL Starting current vs FL current **5,86**  
 Star Delta Starting current vs FL current **Y - motor**  
 Rotor Inertia **0,0021** kgm2

Bearing DE **6204 - ZZ**  
 Bearing NDE **6204 - ZZ**

Extras / Options :

WI	Change	date	sign.
Dutchi Motors B.V. P.O. Box 5390 NL-6802 EJ ARNHEM Tel : +31-(0)26 - 3541 600 Fax : +31-(0)26 - 3541 650		Description Drawing made by :	date 19-04-04
			sign. HvD
		dutchi.motors@dutchi.nl www.dutchi.com	

Power is our commodity, the world is our market !



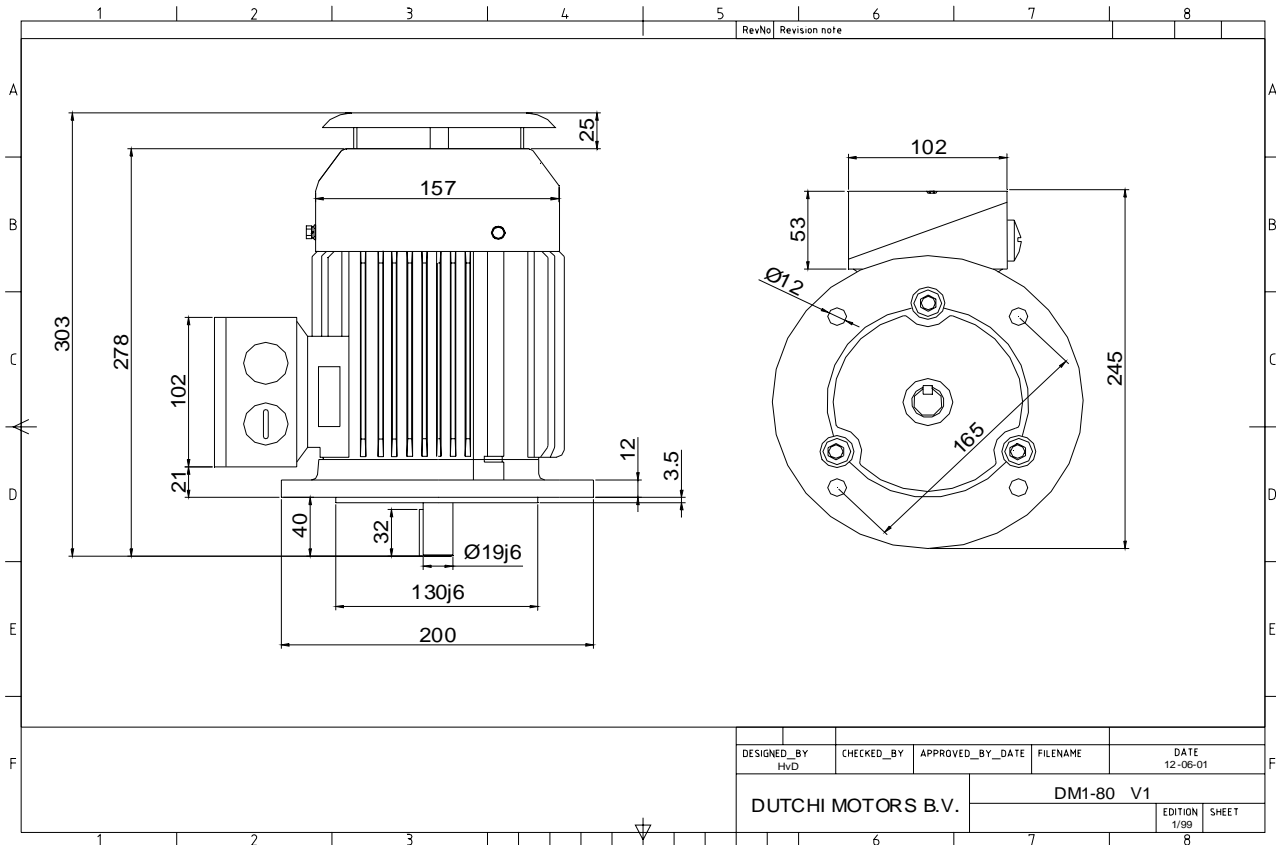
Specification	<b>IEC 60034-1</b>
Manufacturer	<b>Dutchi Motors B.V.</b>
Motor type	<b>DM1- 80 G4</b>
Rated power	<b>0,75</b> kW <b>S1</b> duty
Speed	<b>1418</b> r.p.m
Voltage	<b>230 / 400</b> V
Frequency	<b>50</b> Hz
Connection	<b>Δ / Y</b>
Amps full load	<b>3,28 / 1,89</b> A
Amps no-load(400V)	<b>1,41</b> A
Enclosure	<b>IP 55</b>
Insulation Class	<b>F (temp. rise B (80 K))</b>
Max. coolant temp.	<b>40°C</b>
Max. altitude	<b>1.000</b> mtr, above sea level
Comment	<b>3 x PTC 150°C</b>
Cable entries	<b>2 x M25x1,5 + 1 x M20x1,5 (ptc)</b>
Feature	<b>Cast-iron motor</b>
Weight	<b>18,0</b> kg
Catalog no.	<b>11224075D</b>
Warranty	<b>12~18 months</b>

Efficiency class	<b>N/A</b>			
Load data	100%	75%	50%	25%
Efficiency	<b>73,0</b>	<b>71,7</b>	<b>66,4</b>	<b>51,3</b> %
Power factor	<b>0,78</b>	<b>0,68</b>	<b>0,54</b>	<b>0,36</b>
Sound pressure level (1m)				<b>56,4</b> dB(A)
Resistance R20 (open)				<b>9,32</b> Ω
Resistance R20	<b>Y</b>		<b>18,65</b> Ω	
Full load torque				<b>5,05</b> Nm
DOL Starting torque vs FL torque				<b>2,63</b>
DOL Pull up torque vs FL torque				<b>1,68</b>
DOL Pull out torque vs FL torque				<b>2,96</b>
Star-Delta Starting torque vs FL torque				<b>Y - motor</b>
Star-Delta Pull up torque vs FL torque				<b>Y - motor</b>
Star-Delta Pull out torque vs FL torque				<b>Y - motor</b>
DOL Starting current vs FL current				<b>5,86</b>
Star Delta Starting current vs FL current				<b>Y - motor</b>
Rotor Inertia				<b>0,0021</b> kgm <sup>2</sup>
Bearing DE				<b>6204 - ZZ</b>
Bearing NDE				<b>6204 - ZZ</b>

Extras / Options :

WI	Change	date	sign.
<b>Dutchi Motors B.V.</b> P.O. Box 5390 NL-6802 EJ ARNHEM Tel : +31-(0)26 - 3541 600 Fax : +31-(0)26 - 3541 650		Discription Drawing made by : 19-04-04	date sign. HvD
		dutchi.motors@dutchi.nl www.dutchi.com	

Power is our commodity, the world is our market !



DESIGNED_BY HvD	CHECKED_BY	APPROVED_BY_DATE	FILENAME	DATE 12-06-01
DUTCHI MOTORS B.V.			DM1-80 V1	EDITION 1/99
				SHEET

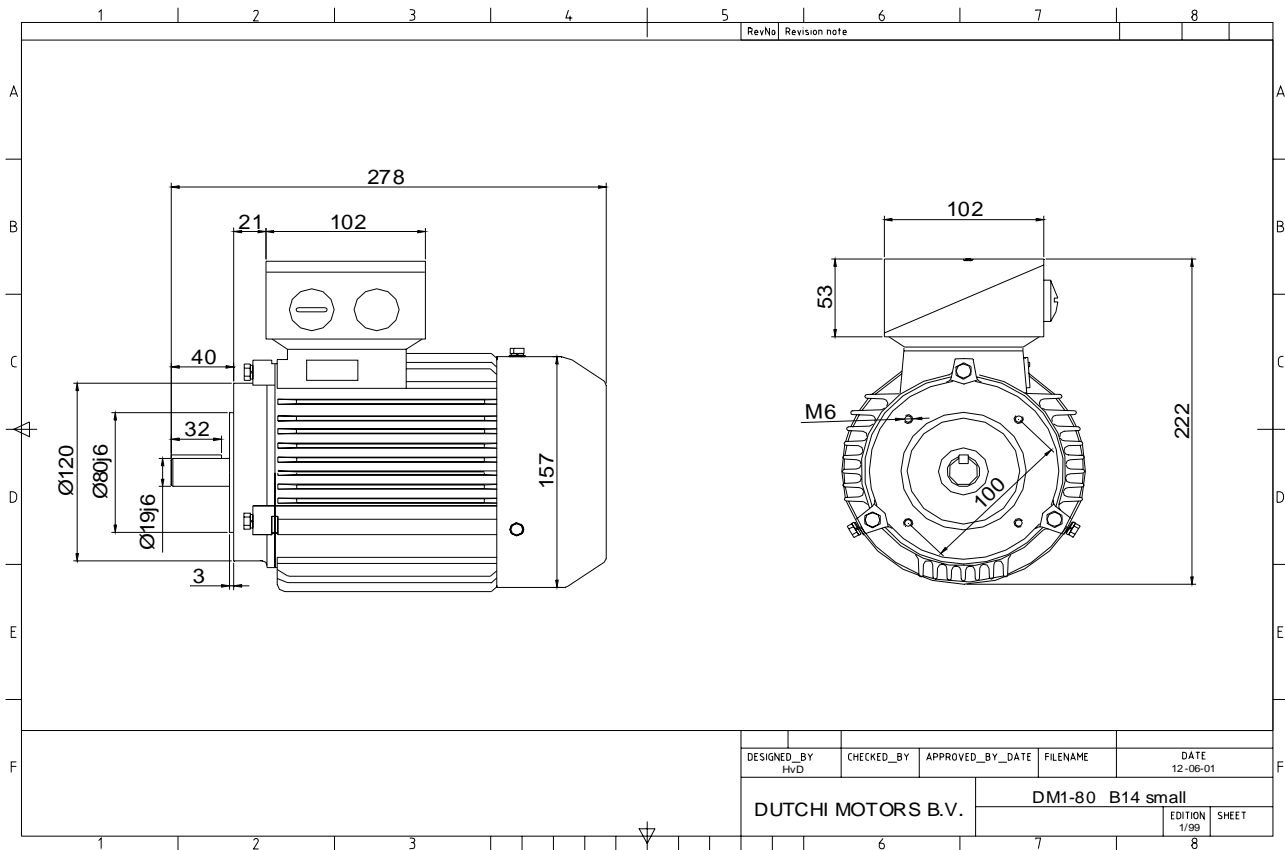
Specification	<b>IEC 60034-1</b>
Manufacturer	<b>Dutchi Motors B.V.</b>
Motor type	<b>DM1- 80 G4</b>
Rated power	<b>0,75</b> kW <b>S1</b> duty
Speed	<b>1418</b> r.p.m
Voltage	<b>230 / 400</b> V
Frequency	<b>50</b> Hz
Connection	<b>Δ / Y</b>
Amps full load	<b>3,28 / 1,89</b> A
Amps no-load(400V)	<b>1,41</b> A
Enclosure	<b>IP 55</b>
Insulation Class	<b>F (temp. rise B (80 K))</b>
Max. coolant temp.	<b>40°C</b>
Max. altitude	<b>1.000</b> mtr, above sea level
Comment	<b>3 x PTC 150°C</b>
Cable entries	<b>2 x M25x1,5 + 1 x M20x1,5 (ptc)</b>
Feature	<b>Cast-iron motor</b>
Weight	<b>18,0</b> kg
Catalog no.	<b>11024075D</b>
Warranty	<b>12~18 months</b>

Efficiency class	<b>N/A</b>			
Load data	100%	75%	50%	25%
Efficiency	<b>73,0</b>	<b>71,7</b>	<b>66,4</b>	<b>51,3</b> %
Power factor	<b>0,78</b>	<b>0,68</b>	<b>0,54</b>	<b>0,36</b>
Sound pressure level (1m)				<b>56,4</b> dB(A)
Resistance R20 (open)				<b>9,32</b> Ω
Resistance R20	<b>Y</b>		<b>18,65</b>	Ω
Full load torque				<b>5,05</b> Nm
DOL Starting torque vs FL torque				<b>2,63</b>
DOL Pull up torque vs FL torque				<b>1,68</b>
DOL Pull out torque vs FL torque				<b>2,96</b>
Star-Delta Starting torque vs FL torque				<b>Y - motor</b>
Star-Delta Pull up torque vs FL torque				<b>Y - motor</b>
Star-Delta Pull out torque vs FL torque				<b>Y - motor</b>
DOL Starting current vs FL current				<b>5,86</b>
Star Delta Starting current vs FL current				<b>Y - motor</b>
Rotor Inertia				<b>0,0021</b> kgm <sup>2</sup>
Bearing DE				<b>6204 - ZZ</b>
Bearing NDE				<b>6204 - ZZ</b>

Extras / Options :

WI	Change	date	sign.
<b>Dutchi Motors B.V.</b> P.O. Box 5390 NL-6802 EJ ARNHEM Tel : +31-(0)26 - 3541 600 Fax : +31-(0)26 - 3541 650		Discription Drawing made by :	date 19-04-04
dutchi.motors@dutchi.nl www.dutchi.com		sign. HvD	

Power is our commodity, the world is our market !



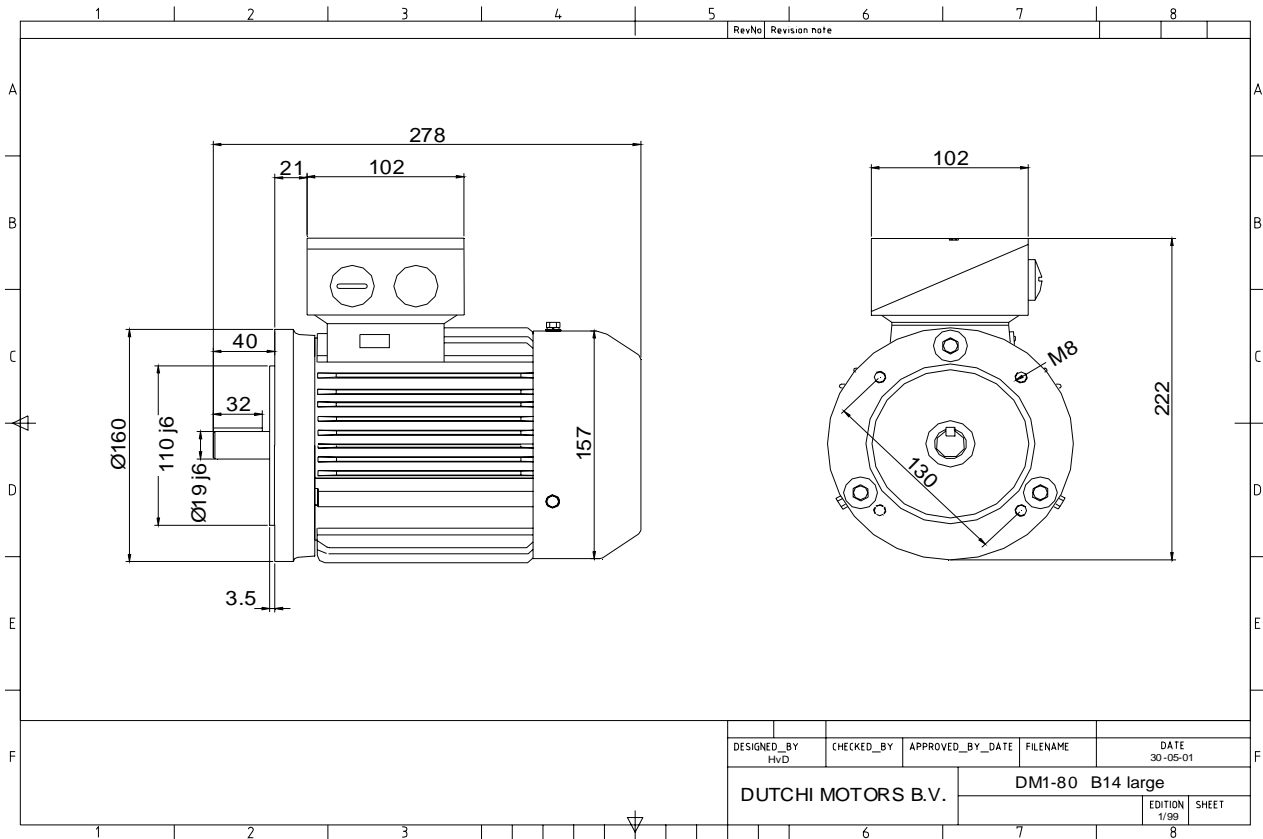
Specification	<b>IEC 60034-1</b>
Manufacturer	<b>Dutchi Motors B.V.</b>
Motor type	<b>DM1- 80 G4</b>
Rated power	<b>0,75</b> kW <b>S1</b> duty
Speed	<b>1418</b> r.p.m
Voltage	<b>230 / 400</b> V
Frequency	<b>50</b> Hz
Connection	<b>Δ / Y</b>
Amps full load	<b>3,28 / 1,89</b> A
Amps no-load(400V)	<b>1,41</b> A
Enclosure	<b>IP 55</b>
Insulation Class	<b>F (temp. rise B (80 K))</b>
Max. coolant temp.	<b>40°C</b>
Max. altitude	<b>1.000</b> mtr, above sea level
Comment	<b>3 x PTC 150°C</b>
Cable entries	<b>2 x M25x1,5 + 1 x M20x1,5 (ptc)</b>
Feature	<b>Cast-iron motor</b>
Weight	<b>18,0</b> kg
Catalog no.	<b>11324075D</b>
Warranty	<b>12~18 months</b>

Efficiency class	<b>N/A</b>			
Load data	100%	75%	50%	25%
Efficiency	<b>73,0</b>	<b>71,7</b>	<b>66,4</b>	<b>51,3</b> %
Power factor	<b>0,78</b>	<b>0,68</b>	<b>0,54</b>	<b>0,36</b>
Sound pressure level (1m)				<b>56,4</b> dB(A)
Resistance R20 (open)				<b>9,32</b> Ω
Resistance R20	<b>Y</b>		<b>18,65</b>	Ω
Full load torque				<b>5,05</b> Nm
DOL Starting torque vs FL torque				<b>2,63</b>
DOL Pull up torque vs FL torque				<b>1,68</b>
DOL Pull out torque vs FL torque				<b>2,96</b>
Star-Delta Starting torque vs FL torque				<b>Y - motor</b>
Star-Delta Pull up torque vs FL torque				<b>Y - motor</b>
Star-Delta Pull out torque vs FL torque				<b>Y - motor</b>
DOL Starting current vs FL current				<b>5,86</b>
Star Delta Starting current vs FL current				<b>Y - motor</b>
Rotor Inertia				<b>0,0021</b> kgm <sup>2</sup>
Bearing DE				<b>6204 - ZZ</b>
Bearing NDE				<b>6204 - ZZ</b>

Extras / Options :

WI	Change	date	sign.
<b>Dutchi Motors B.V.</b> P.O. Box 5390 NL-6802 EJ ARNHEM Tel : +31-(0)26 - 3541 600 Fax : +31-(0)26 - 3541 650		Discription Drawing made by :	date 19-04-04 sign. HvD
		<b>dutchi.motors@dutchi.nl</b> <b>www.dutchi.com</b>	

Power is our commodity, the world is our market !



Specification **IEC 60034-1**  
 Manufacturer **Dutchi Motors B.V.**  
 Motor type **DM1- 80 G4**  
 Rated power **0,75** kW **S1** duty  
 Speed **1418** r.p.m  
 Voltage **230 / 400** V  
 Frequency **50** Hz  
 Connection **Δ / Y**  
 Amps full load **3,28 / 1,89** A  
 Amps no-load(400V) **1,41** A  
 Enclosure **IP 55**  
 Insulation Class **F (temp. rise B (80 K))**

Max. coolant temp. **40°C**  
 Max. altitude **1.000** mtr, above sea level  
 Comment **3 x PTC 150°C**  
 Cable entries **2 x M25x1,5 + 1 x M20x1,5 (ptc)**

Feature **Cast-iron motor**  
 Weight **18,0** kg  
 Catalog no. **11424075D**  
 Warranty **12~18 months**

Efficiency class **N/A**  
 Load data 100% 75% 50% 25%  
 Efficiency **73,0 71,7 66,4 51,3** %  
 Power factor **0,78 0,68 0,54 0,36**

Sound pressure level (1m) **56,4** dB(A)  
 Resistance R20 (open) **9,32** Ω  
 Resistance R20 **Y 18,65** Ω

Full load torque **5,05** Nm  
 DOL Starting torque vs FL torque **2,63**  
 DOL Pull up torque vs FL torque **1,68**  
 DOL Pull out torque vs FL torque **2,96**  
 Star-Delta Starting torque vs FL torque **Y - motor**  
 Star-Delta Pull up torque vs FL torque **Y - motor**  
 Star-Delta Pull out torque vs FL torque **Y - motor**  
 DOL Starting current vs FL current **5,86**  
 Star Delta Starting current vs FL current **Y - motor**  
 Rotor Inertia **0,0021** kgm2

Bearing DE **6204 - ZZ**  
 Bearing NDE **6204 - ZZ**

Extras / Options :

WI	Change	date	sign.
<b>Dutchi Motors B.V.</b> P.O. Box 5390 NL-6802 EJ ARNHEM Tel : +31-(0)26 - 3541 600 Fax : +31-(0)26 - 3541 650		Description	date
		Drawing made by :	19-04-04
		<b>dutchi.motors@dutchi.nl</b> <b>www.dutchi.com</b>	