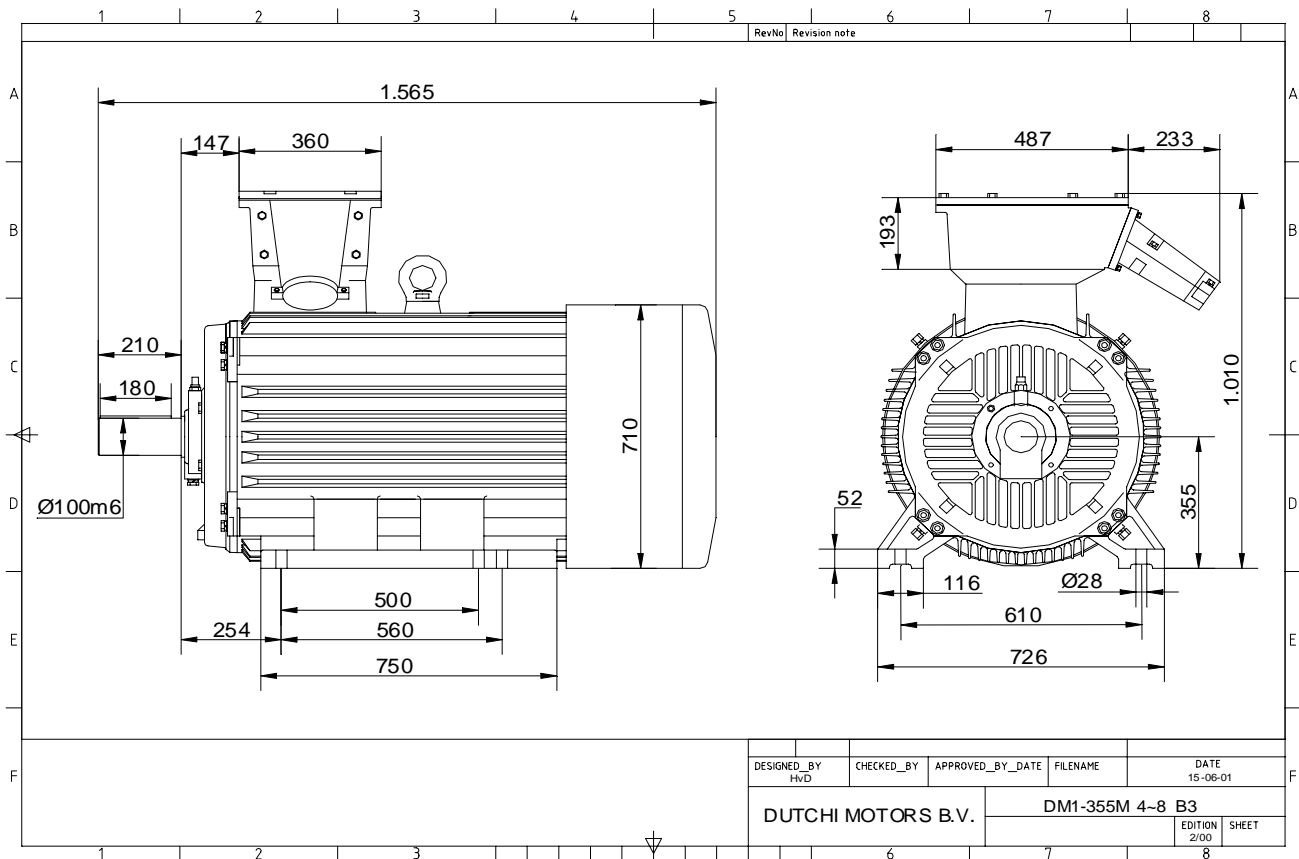


Power is our commodity, the world is our market !

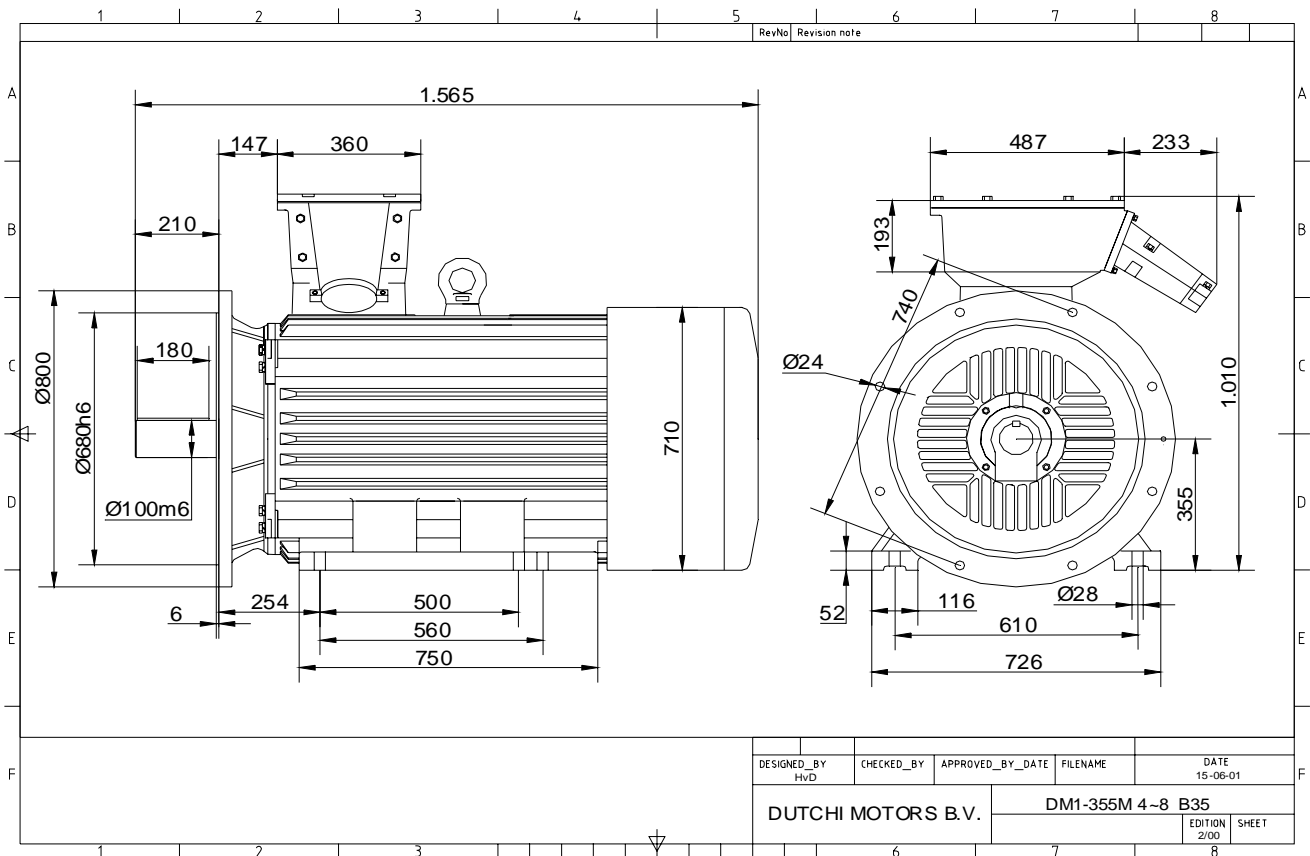


Specification	IEC 60034-1
Manufacturer	Dutchi Motors B.V.
Motor type	DM1- 355 M4
Rated power	250 kW S1 duty
Speed	1490 r.p.m
Voltage	400 / 690 V
Frequency	50 Hz
Connection	Δ / Y
Amps full load	421 / 243 A
Amps no-load(400V)	75,60 A
Enclosure	IP 55
Insulation Class	F (temp. rise B (80 K))
Max. coolant temp.	40°C
Max. altitude	1.000 mtr, above sea level
Comment	3 x PTC 150°C
Cable entries	2 x Ø 70 mm + 1 x M20x1,5 (ptc)
Feature	Cast-iron motor
Weight	1720 kg
Catalog no.	11134C50D
Warranty	12~18 months

Efficiency class	N/A			
Load data	100%	75%	50%	25%
Efficiency	95,4	95,5	94,7	91,2 %
Power factor	0,90	0,92	0,89	0,65
Sound pressure level (1m)				82,8 dB(A)
Resistance R20 (open)				0,0113 Ω
Resistance R20	Δ			0,0075 Ω
Full load torque				1602,35 Nm
DOL Starting torque vs FL torque				1,52
DOL Pull up torque vs FL torque				1,21
DOL Pull out torque vs FL torque				2,92
Star-Delta Starting torque vs FL torque				0,48
Star-Delta Pull up torque vs FL torque				0,38
Star-Delta Pull out torque vs FL torque				0,91
DOL Starting current vs FL current				5,92
Star Delta Starting current vs FL current				1,85
Rotor Inertia				7,164 kgm ²
Bearing DE				6322 - C3 or NU322
Bearing NDE				6320 - C3 (IM V1 7320B)

WI	Change	date	sign.
Dutchi Motors B.V. P.O. Box 5390 NL-6802 EJ ARNHEM Tel : +31-(0)26 - 3541 600 Fax : +31-(0)26 - 3541 650		Description	date
		Drawing made by :	27-04-04
		dutchi.motors@dutchi.nl www.dutchi.com	

Power is our commodity, the world is our market !



Specification **IEC 60034-1**
 Manufacturer **Dutchi Motors B.V.**
 Motor type **DM1- 355 M4**
 Rated power **250** kW **S1** duty
 Speed **1490** r.p.m
 Voltage **400** / **690** V
 Frequency **50** Hz
 Connection **Δ** / **Y**
 Amps full load **421** / **243** A
 Amps no-load(400V) **75,60** A
 Enclosure **IP 55**
 Insulation Class **F (temp. rise B (80 K))**

Max. coolant temp. **40°C**
 Max. altitude **1.000** mtr, above sea level
 Comment **3 x PTC 150°C**
 Cable entries **2 x Ø 70 mm + 1 x M20x1,5 (ptc)**

Feature **Cast-iron motor**
 Weight **1720** kg
 Catalog no. **11534C50D**
 Warranty **12~18 months**

Efficiency class **N/A**
 Load data 100% 75% 50% 25%
 Efficiency **95,4 95,5 94,7 91,2** %
 Power factor **0,90 0,92 0,89 0,65**

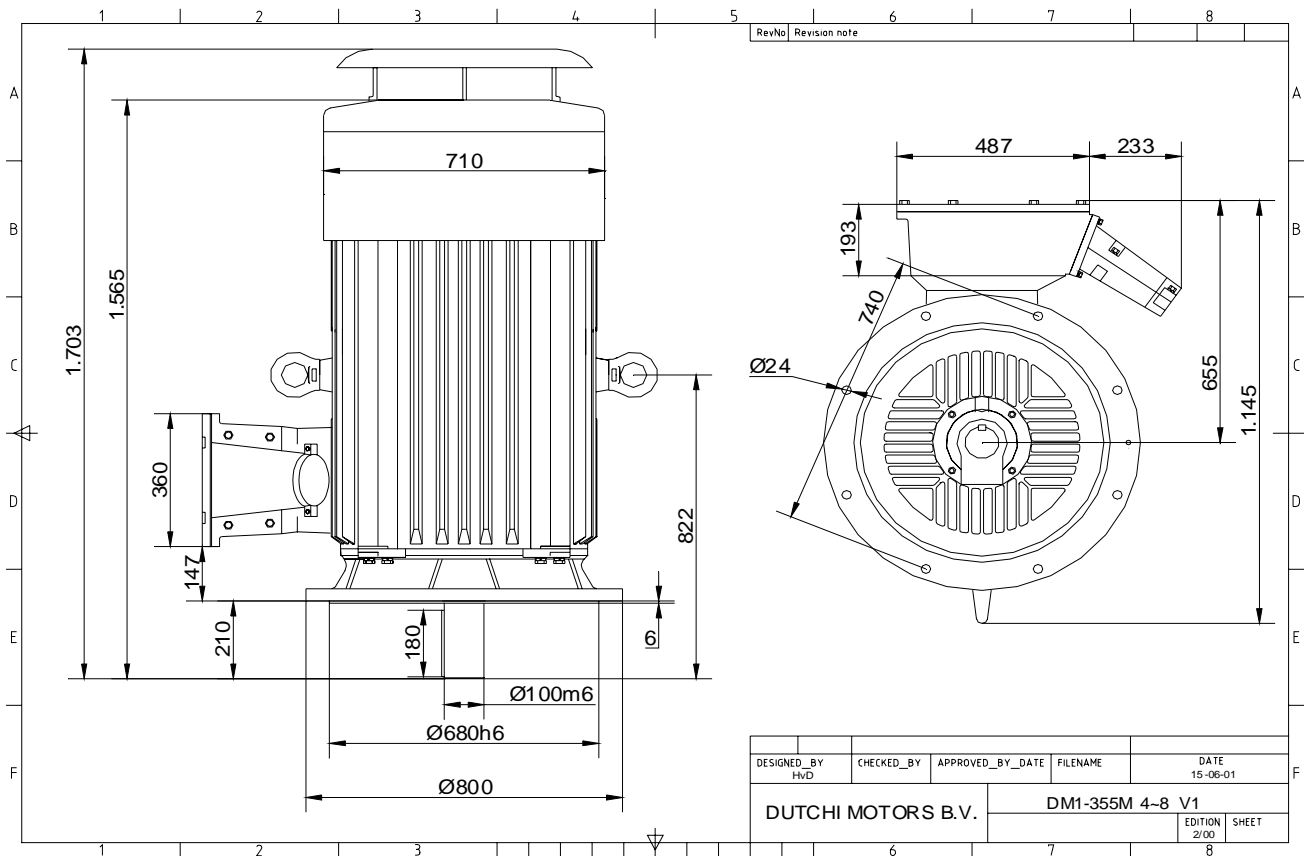
Sound pressure level (1m) **82,8** dB(A)
 Resistance R20 (open) **0,0113** Ω
 Resistance R20 **Δ 0,0075** Ω

Full load torque **1602,35** Nm
 DOL Starting torque vs FL torque **1,52**
 DOL Pull up torque vs FL torque **1,21**
 DOL Pull out torque vs FL torque **2,92**
 Star-Delta Starting torque vs FL torque **0,48**
 Star-Delta Pull up torque vs FL torque **0,38**
 Star-Delta Pull out torque vs FL torque **0,91**
 DOL Starting current vs FL current **5,92**
 Star Delta Starting current vs FL current **1,85**
 Rotor Inertia **7,164** kgm²

Bearing DE **6322 - C3 or NU322**
 Bearing NDE **6320 - C3 (IM V1 7320B)**

WI	Change	date	sign.
Dutchi Motors B.V. P.O. Box 5390 NL-6802 EJ ARNHEM Tel : +31-(0)26 - 3541 600 Fax : +31-(0)26 - 3541 650		Description Drawing made by : 27-04-04	date sign. HvD
		dutchi.motors@dutchi.nl www.dutchi.com	

Power is our commodity, the world is our market !



Specification **IEC 60034-1**
 Manufacturer **Dutchi Motors B.V.**
 Motor type **DM1- 355 M4**
 Rated power **250** kW **S1** duty
 Speed **1490** r.p.m
 Voltage **400 / 690** V
 Frequency **50** Hz
 Connection **Δ / Y**
 Amps full load **421 / 243** A
 Amps no-load(400V) **75,60** A
 Enclosure **IP 55**
 Insulation Class **F (temp. rise B (80 K))**

Max. coolant temp. **40°C**
 Max. altitude **1.000** mtr, above sea level
 Comment **3 x PTC 150°C**
 Cable entries **2 x Ø 70 mm + 1 x M20x1,5 (ptc)**

Feature **Cast-iron motor**
 Weight **1720** kg
 Catalog no. **11034C50D**
 Warranty **12~18 months**

Efficiency class **N/A**
 Load data 100% 75% 50% 25%
 Efficiency **95,4 95,5 94,7 91,2** %
 Power factor **0,90 0,92 0,89 0,65**

Sound pressure level (1m) **82,8** dB(A)
 Resistance R20 (open) **0,0113** Ω
 Resistance R20 **Δ 0,0075** Ω

Full load torque **1602,35** Nm
 DOL Starting torque vs FL torque **1,52**
 DOL Pull up torque vs FL torque **1,21**
 DOL Pull out torque vs FL torque **2,92**
 Star-Delta Starting torque vs FL torque **0,48**
 Star-Delta Pull up torque vs FL torque **0,38**
 Star-Delta Pull out torque vs FL torque **0,91**
 DOL Starting current vs FL current **5,92**
 Star Delta Starting current vs FL current **1,85**
 Rotor Inertia **7,164** kgm²

Bearing DE **6322 - C3 or NU322**
 Bearing NDE **6320 - C3 (IM V1 7320B)**

WI	Change	date	sign.
Dutchi Motors B.V.		Description	date
P.O. Box 5390		Drawing made by :	27-04-04
NL-6802 EJ ARNHEM			
Tel : +31-(0)26 - 3541 600		dutchi.motors@dutchi.nl	
Fax : +31-(0)26 - 3541 650		www.dutchi.com	