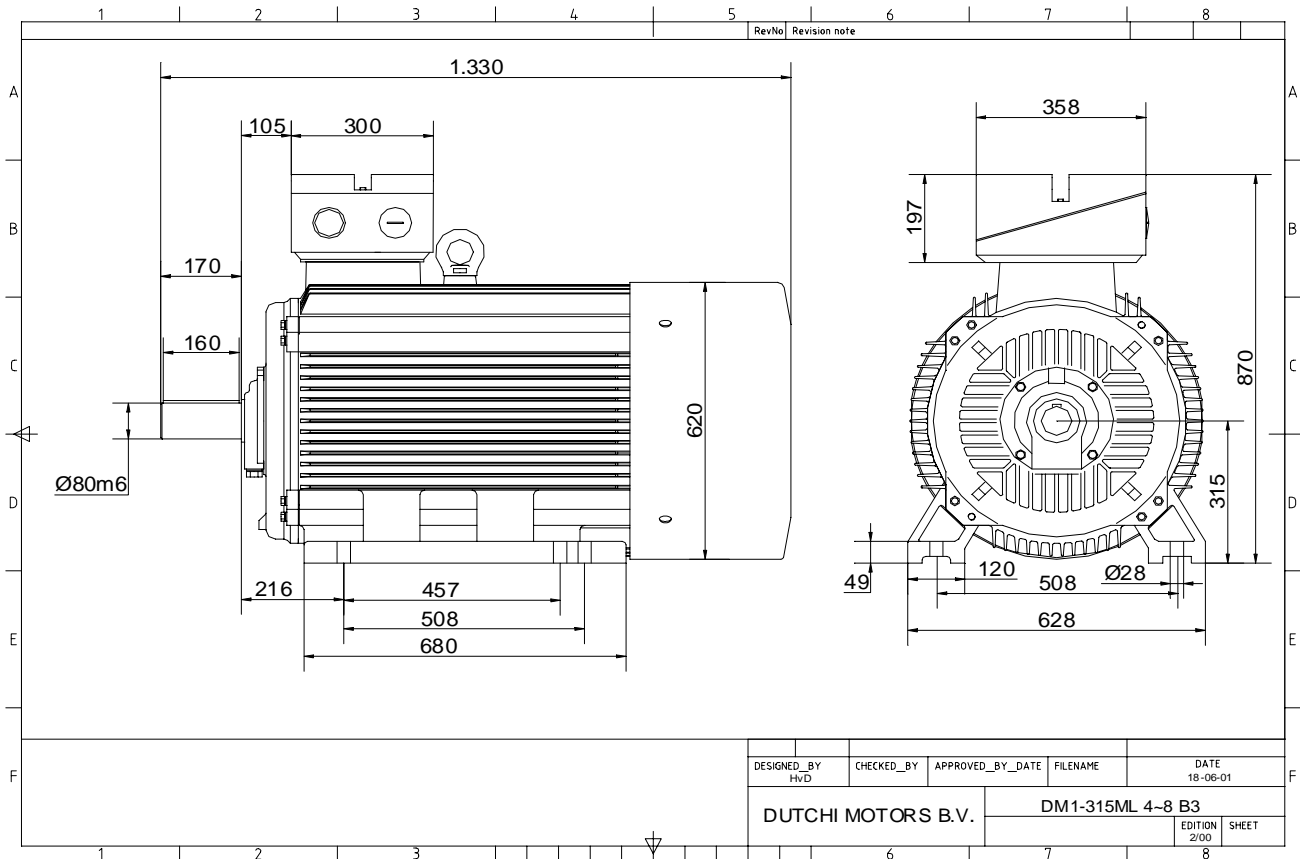


Power is our commodity, the world is our market !



Specification **IEC 60034-1**
 Manufacturer **Dutchi Motors B.V.**
 Motor type **DM1- 315 M4**
 Rated power **132** kW **S1** duty
 Speed **1485** r.p.m
 Voltage **400** / **690** V
 Frequency **50** Hz
 Connection **Δ** / **Y**
 Amps full load **230** / **133** A
 Amps no-load(400V) **64,70** A
 Enclosure **IP 55**
 Insulation Class **F (temp. rise B (80 K))**

Max. coolant temp. **40°C**
 Max. altitude **1.000** mtr, above sea level
 Comment **3 x PTC 150°C**
 Cable entries **2 x M63x1,5 + 1 x M20x1,5 (ptc)**

Feature **Cast-iron motor**
 Weight **1002** kg
 Catalog no. **11134B32D**
 Warranty **12~18 months**

Efficiency class **N/A**
 Load data 100% 75% 50% 25%
 Efficiency **94,6 94,5 93,4 89,0** %
 Power factor **0,87 0,87 0,81 0,62**

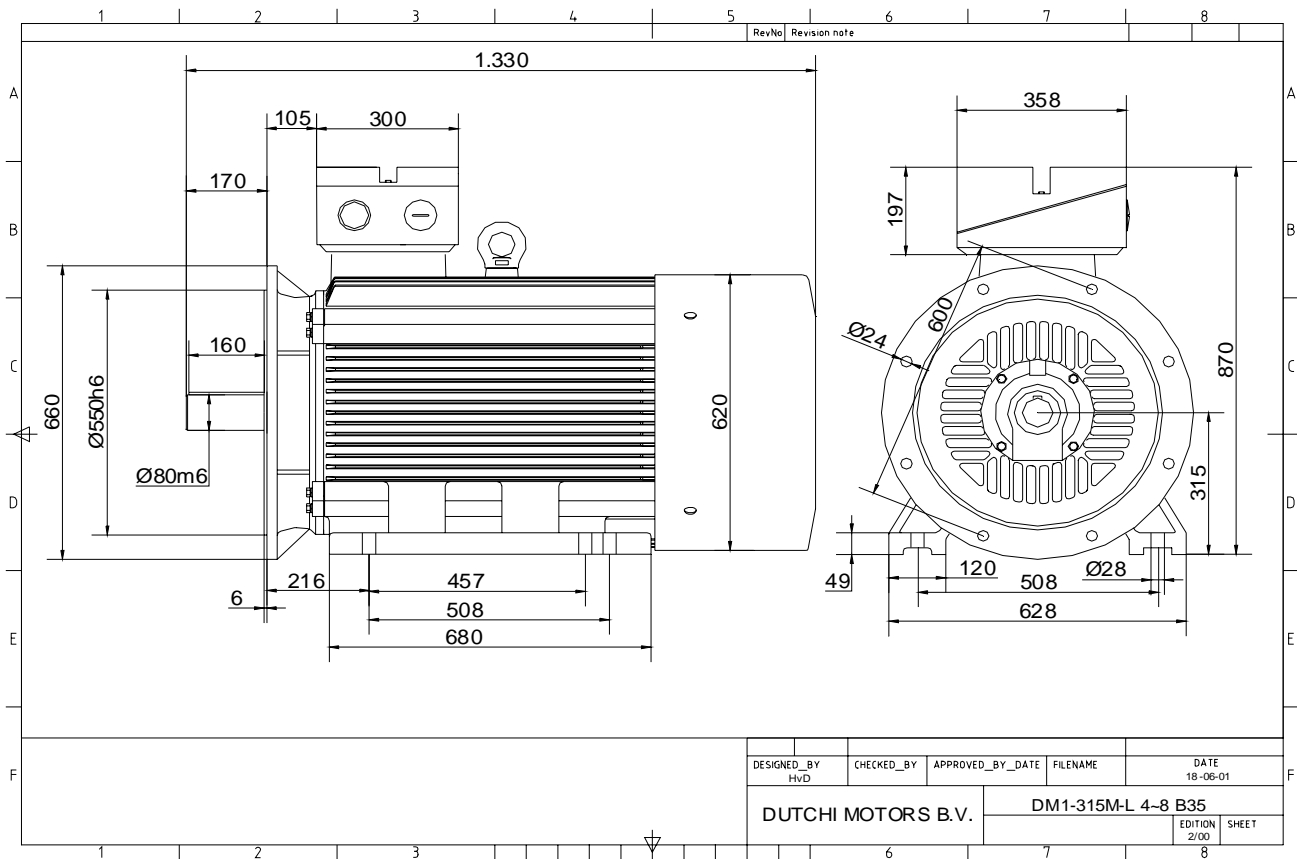
Sound pressure level (1m) **78,3** dB(A)
 Resistance R20 (open) **0,0257** Ω
 Resistance R20 **Δ 0,0172** Ω

Full load torque **849** Nm
 DOL Starting torque vs FL torque **1,85**
 DOL Pull up torque vs FL torque **1,30**
 DOL Pull out torque vs FL torque **2,77**
 Star-Delta Starting torque vs FL torque **0,58**
 Star-Delta Pull up torque vs FL torque **0,41**
 Star-Delta Pull out torque vs FL torque **0,86**
 DOL Starting current vs FL current **5,53**
 Star Delta Starting current vs FL current **1,73**
 Rotor Inertia **3,4800** kgm²

Bearing DE **6319 - C3 or NU319**
 Bearing NDE **6319 - C3 (IM V1 7319B)**

WI	Change	date	sign.
Dutchi Motors B.V.		Description	date
P.O. Box 5390		Drawing made by :	27-04-04
NL-6802 EJ ARNHEM			
Tel : +31-(0)26 - 3541 600		dutchi.motors@dutchi.nl	
Fax : +31-(0)26 - 3541 650		www.dutchi.com	

Power is our commodity, the world is our market !



Specification **IEC 60034-1**
 Manufacturer **Dutchi Motors B.V.**
 Motor type **DM1- 315 M4**
 Rated power **132** kW **S1** duty
 Speed **1485** r.p.m
 Voltage **400 / 690** V
 Frequency **50** Hz
 Connection **Δ / Y**
 Amps full load **230 / 133** A
 Amps no-load(400V) **64,70** A
 Enclosure **IP 55**
 Insulation Class **F (temp. rise B (80 K))**

Max. coolant temp. **40°C**
 Max. altitude **1.000** mtr, above sea level
 Comment **3 x PTC 150°C**
 Cable entries **2 x M63x1,5 + 1 x M20x1,5 (ptc)**

Feature **Cast-iron motor**
 Weight **1002** kg
 Catalog no. **11534B32D**
 Warranty **12~18 months**

Efficiency class **N/A**
 Load data 100% 75% 50% 25%
 Efficiency **94,6 94,5 93,4 89,0** %
 Power factor **0,87 0,87 0,81 0,62**

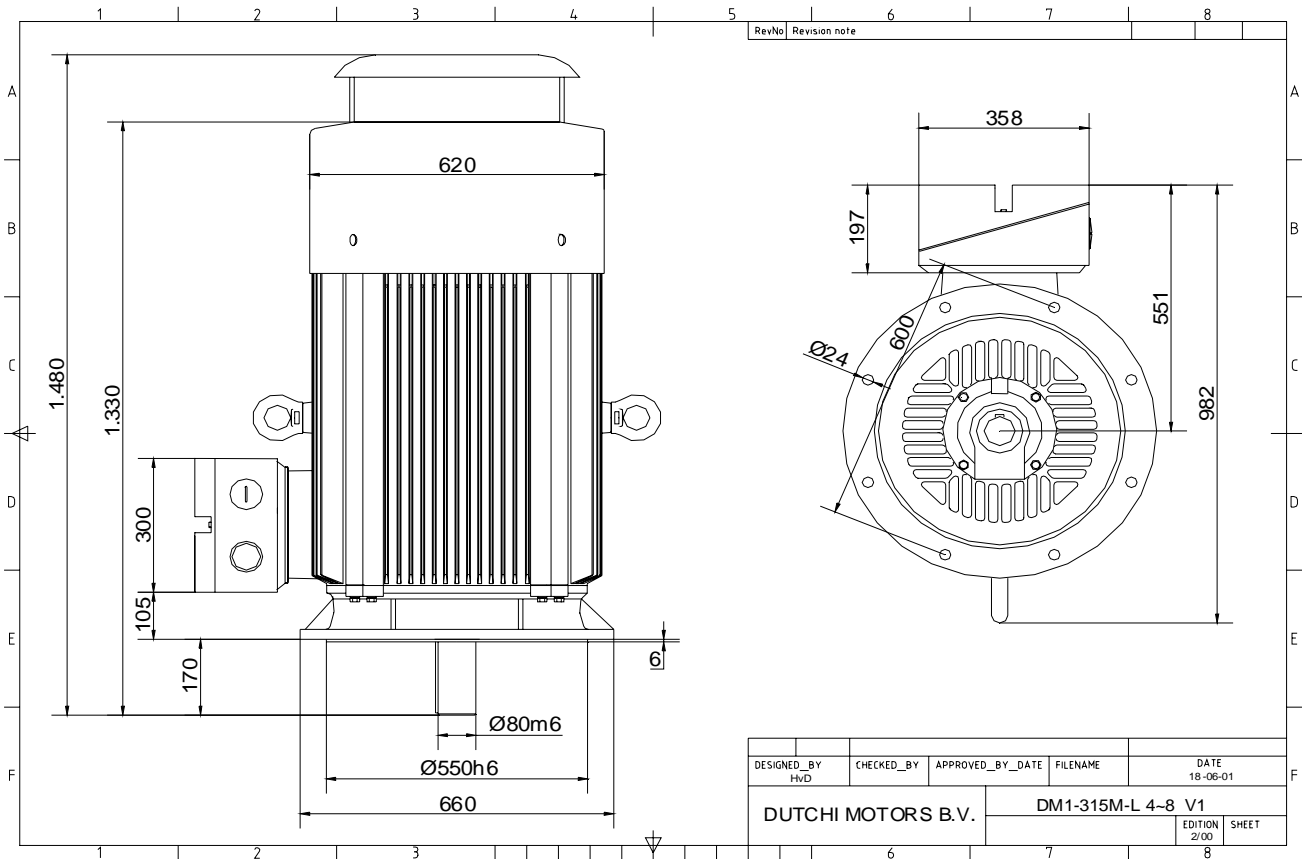
Sound pressure level (1m) **78,3** dB(A)
 Resistance R20 (open) **0,0257** Ω
 Resistance R20 **Δ 0,0172** Ω

Full load torque **849** Nm
 DOL Starting torque vs FL torque **1,85**
 DOL Pull up torque vs FL torque **1,30**
 DOL Pull out torque vs FL torque **2,77**
 Star-Delta Starting torque vs FL torque **0,58**
 Star-Delta Pull up torque vs FL torque **0,41**
 Star-Delta Pull out torque vs FL torque **0,86**
 DOL Starting current vs FL current **5,53**
 Star Delta Starting current vs FL current **1,73**
 Rotor Inertia **3,4800** kgm²

Bearing DE **6319 - C3 or NU319**
 Bearing NDE **6319 - C3 (IM V1 7319B)**

WI	Change	date	sign.
Dutchi Motors B.V.		Description	date
P.O. Box 5390		Drawing made by :	27-04-04
NL-6802 EJ ARNHEM			
Tel : +31-(0)26 - 3541 600		dutchi.motors@dutchi.nl	
Fax : +31-(0)26 - 3541 650		www.dutchi.com	

Power is our commodity, the world is our market !



Specification **IEC 60034-1**
 Manufacturer **Dutchi Motors B.V.**
 Motor type **DM1- 315 M4**
 Rated power **132** kW **S1** duty
 Speed **1485** r.p.m
 Voltage **400** / **690** V
 Frequency **50** Hz
 Connection **Δ** / **Y**
 Amps full load **230** / **133** A
 Amps no-load(400V) **64,70** A
 Enclosure **IP 55**
 Insulation Class **F (temp. rise B (80 K))**

Max. coolant temp. **40°C**
 Max. altitude **1.000** mtr, above sea level
 Comment **3 x PTC 150°C**
 Cable entries **2 x M63x1,5 + 1 x M20x1,5 (ptc)**

Feature **Cast-iron motor**
 Weight **1002** kg
 Catalog no. **11034B32D**
 Warranty **12~18 months**

Efficiency class **N/A**
 Load data 100% 75% 50% 25%
 Efficiency **94,6 94,5 93,4 89,0** %
 Power factor **0,87 0,87 0,81 0,62**

Sound pressure level (1m) **78,3** dB(A)
 Resistance R20 (open) **0,0257** Ω
 Resistance R20 **Δ 0,0172** Ω

Full load torque **849** Nm
 DOL Starting torque vs FL torque **1,85**
 DOL Pull up torque vs FL torque **1,30**
 DOL Pull out torque vs FL torque **2,77**
 Star-Delta Starting torque vs FL torque **0,58**
 Star-Delta Pull up torque vs FL torque **0,41**
 Star-Delta Pull out torque vs FL torque **0,86**
 DOL Starting current vs FL current **5,53**
 Star Delta Starting current vs FL current **1,73**
 Rotor Inertia **3,4800** kgm2

Bearing DE **6319 - C3 or NU319**
 Bearing NDE **6319 - C3 (IM V1 7319B)**

WI	Change	date	sign.
Dutchi Motors B.V.		Description	date
P.O. Box 5390		Drawing made by :	27-04-04
NL-6802 EJ ARNHEM			
Tel : +31-(0)26 - 3541 600		dutchi.motors@dutchi.nl	
Fax : +31-(0)26 - 3541 650		www.dutchi.com	