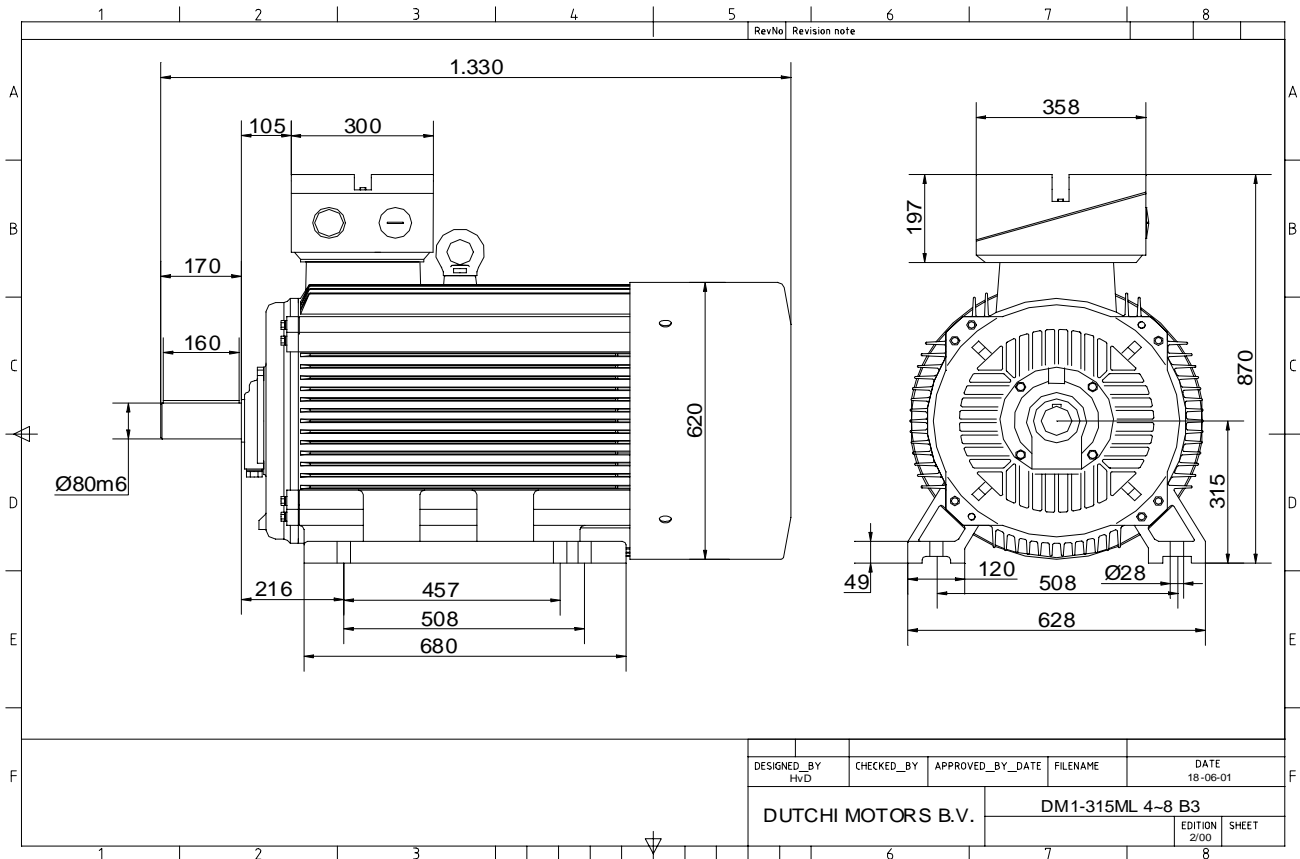


Power is our commodity, the world is our market !



Specification **IEC 60034-1**
 Manufacturer **Dutchi Motors B.V.**
 Motor type **DM1- 315 L4**
 Rated power **160** kW **S1** duty
 Speed **1485** r.p.m
 Voltage **400** / **690** V
 Frequency **50** Hz
 Connection **Δ** / **Y**
 Amps full load **274** / **158** A
 Amps no-load(400V) **80,80** A
 Enclosure **IP 55**
 Insulation Class **F (temp. rise B (80 K))**

Max. coolant temp. **40°C**
 Max. altitude **1.000** mtr, above sea level
 Comment **3 x PTC 150°C**
 Cable entries **2 x M63x1,5 + 1 x M20x1,5 (ptc)**

Feature **Cast-iron motor**
 Weight **1070** kg
 Catalog no. **11124B60D**
 Warranty **12~18 months**

Efficiency class **N/A**
 Load data 100% 75% 50% 25%
 Efficiency **94,7 94,6 93,5 89,5** %
 Power factor **0,89 0,88 0,83 0,70**

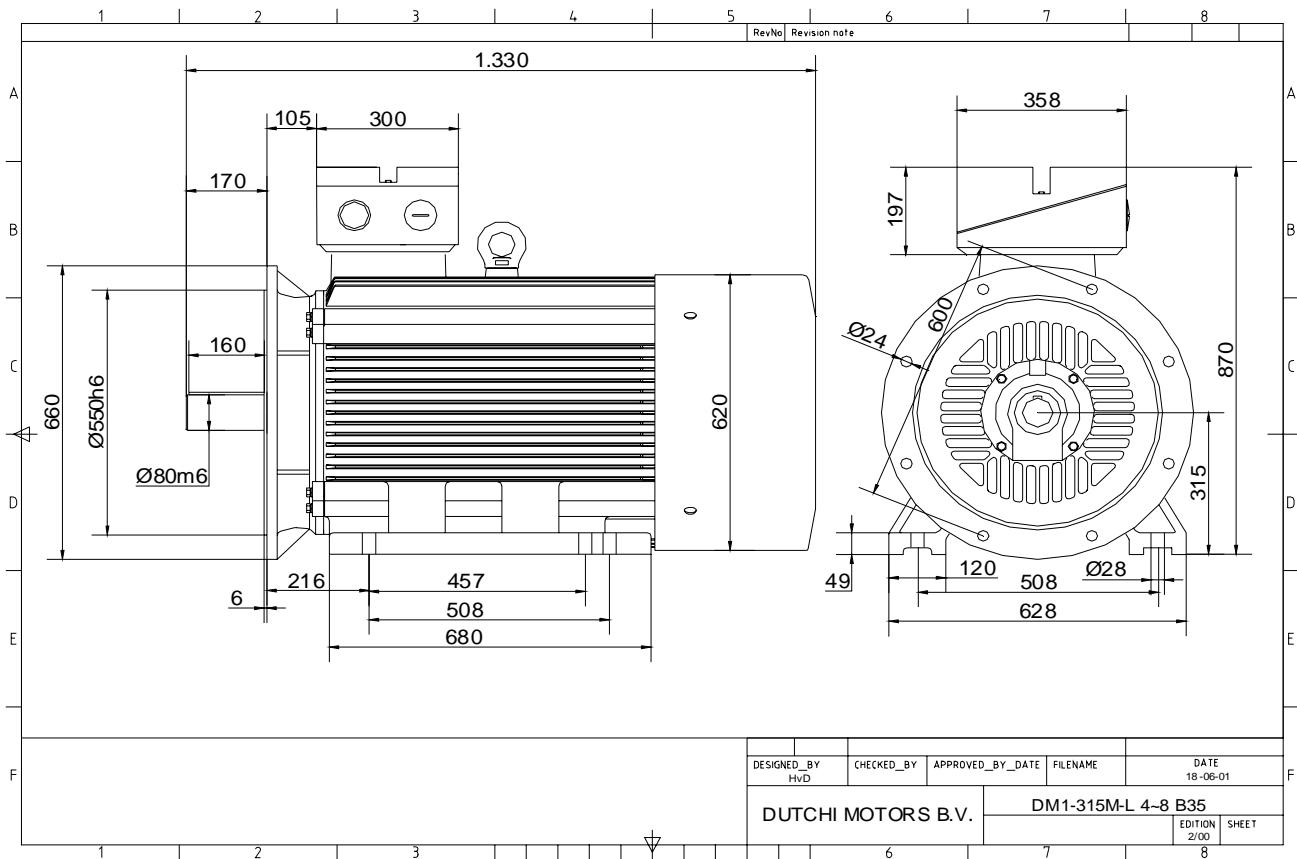
Sound pressure level (1m) **84,0** dB(A)
 Resistance R20 (open) **0,0232** Ω
 Resistance R20 **Δ 0,0155** Ω

Full load torque **1029** Nm
 DOL Starting torque vs FL torque **2,01**
 DOL Pull up torque vs FL torque **1,61**
 DOL Pull out torque vs FL torque **3,00**
 Star-Delta Starting torque vs FL torque **0,63**
 Star-Delta Pull up torque vs FL torque **0,50**
 Star-Delta Pull out torque vs FL torque **0,94**
 DOL Starting current vs FL current **6,01**
 Star Delta Starting current vs FL current **1,88**
 Rotor Inertia **3,9600** kgm²

Bearing DE **6319 - C3 or NU319**
 Bearing NDE **6319 - C3 (IM V1 7319B)**

WI	Change	date	sign.
Dutchi Motors B.V. P.O. Box 5390 NL-6802 EJ ARNHEM Tel : +31-(0)26 - 3541 600 Fax : +31-(0)26 - 3541 650		Discription Drawing made by : 27-04-04	date sign. HvD
dutchi.motors@dutchi.nl www.dutchi.com			

Power is our commodity, the world is our market !

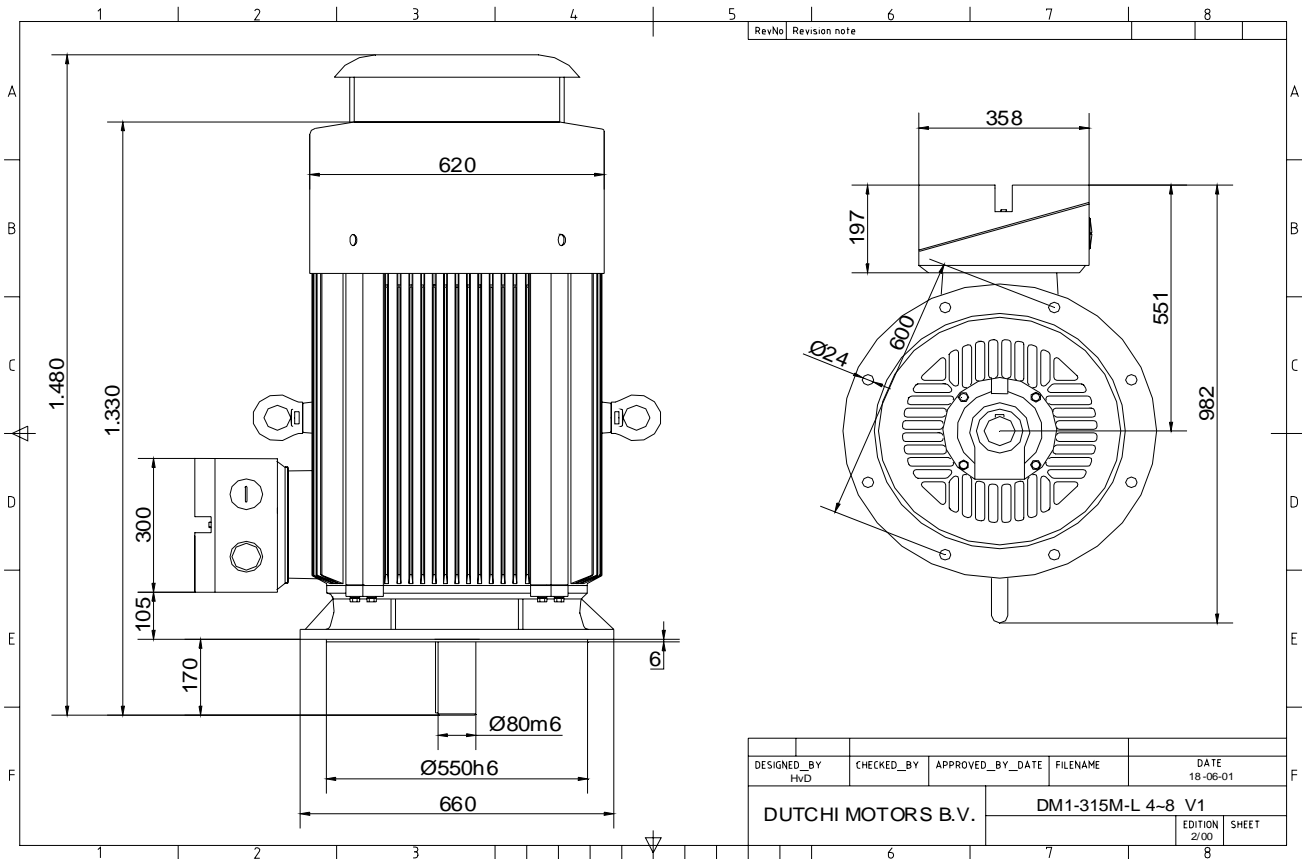


Specification	IEC 60034-1
Manufacturer	Dutchi Motors B.V.
Motor type	DM1- 315 L4
Rated power	160 kW S1 duty
Speed	1485 r.p.m
Voltage	400 / 690 V
Frequency	50 Hz
Connection	Δ / Y
Amps full load	274 / 158 A
Amps no-load(400V)	80,80 A
Enclosure	IP 55
Insulation Class	F (temp. rise B (80 K))
Max. coolant temp.	40°C
Max. altitude	1.000 mtr, above sea level
Comment	3 x PTC 150°C
Cable entries	2 x M63x1,5 + 1 x M20x1,5 (ptc)
Feature	Cast-iron motor
Weight	1070 kg
Catalog no.	11524B60D
Warranty	12~18 months

Efficiency class	N/A			
Load data	100%	75%	50%	25%
Efficiency	94,7	94,6	93,5	89,5 %
Power factor	0,89	0,88	0,83	0,70
Sound pressure level (1m)				84,0 dB(A)
Resistance R20 (open)				0,0232 Ω
Resistance R20	Δ			0,0155 Ω
Full load torque				1029 Nm
DOL Starting torque vs FL torque				2,01
DOL Pull up torque vs FL torque				1,61
DOL Pull out torque vs FL torque				3,00
Star-Delta Starting torque vs FL torque				0,63
Star-Delta Pull up torque vs FL torque				0,50
Star-Delta Pull out torque vs FL torque				0,94
DOL Starting current vs FL current				6,01
Star Delta Starting current vs FL current				1,88
Rotor Inertia				3,9600 kgm ²
Bearing DE				6319 - C3 or NU319
Bearing NDE				6319 - C3 (IM V1 7319B)

WI	Change	date	sign.
Dutchi Motors B.V. P.O. Box 5390 NL-6802 EJ ARNHEM Tel : +31-(0)26 - 3541 600 Fax : +31-(0)26 - 3541 650		Discription Drawing made by : 27-04-04	date sign. HvD
dutchi.motors@dutchi.nl www.dutchi.com			

Power is our commodity, the world is our market !



Specification **IEC 60034-1**
 Manufacturer **Dutchi Motors B.V.**
 Motor type **DM1- 315 L4**
 Rated power **160** kW **S1** duty
 Speed **1485** r.p.m
 Voltage **400** / **690** V
 Frequency **50** Hz
 Connection **Δ** / **Y**
 Amps full load **274** / **158** A
 Amps no-load(400V) **80,80** A
 Enclosure **IP 55**
 Insulation Class **F (temp. rise B (80 K))**

Max. coolant temp. **40°C**
 Max. altitude **1.000** mtr, above sea level
 Comment **3 x PTC 150°C**
 Cable entries **2 x M63x1,5 + 1 x M20x1,5 (ptc)**

Feature **Cast-iron motor**
 Weight **1070** kg
 Catalog no. **11024B60D**
 Warranty **12~18 months**

Efficiency class **N/A**
 Load data 100% 75% 50% 25%
 Efficiency **94,7 94,6 93,5 89,5** %
 Power factor **0,89 0,88 0,83 0,70**

Sound pressure level (1m) **84,0** dB(A)
 Resistance R20 (open) **0,0232** Ω
 Resistance R20 **Δ 0,0155** Ω

Full load torque **1029** Nm
 DOL Starting torque vs FL torque **2,01**
 DOL Pull up torque vs FL torque **1,61**
 DOL Pull out torque vs FL torque **3,00**
 Star-Delta Starting torque vs FL torque **0,63**
 Star-Delta Pull up torque vs FL torque **0,50**
 Star-Delta Pull out torque vs FL torque **0,94**
 DOL Starting current vs FL current **6,01**
 Star Delta Starting current vs FL current **1,88**
 Rotor Inertia **3,9600** kgm²

Bearing DE **6319 - C3 or NU319**
 Bearing NDE **6319 - C3 (IM V1 7319B)**

WI	Change	date	sign.
Dutchi Motors B.V.		Description	date
P.O. Box 5390		Drawing made by :	27-04-04
NL-6802 EJ ARNHEM			
Tel : +31-(0)26 - 3541 600		dutchi.motors@dutchi.nl	
Fax : +31-(0)26 - 3541 650		www.dutchi.com	