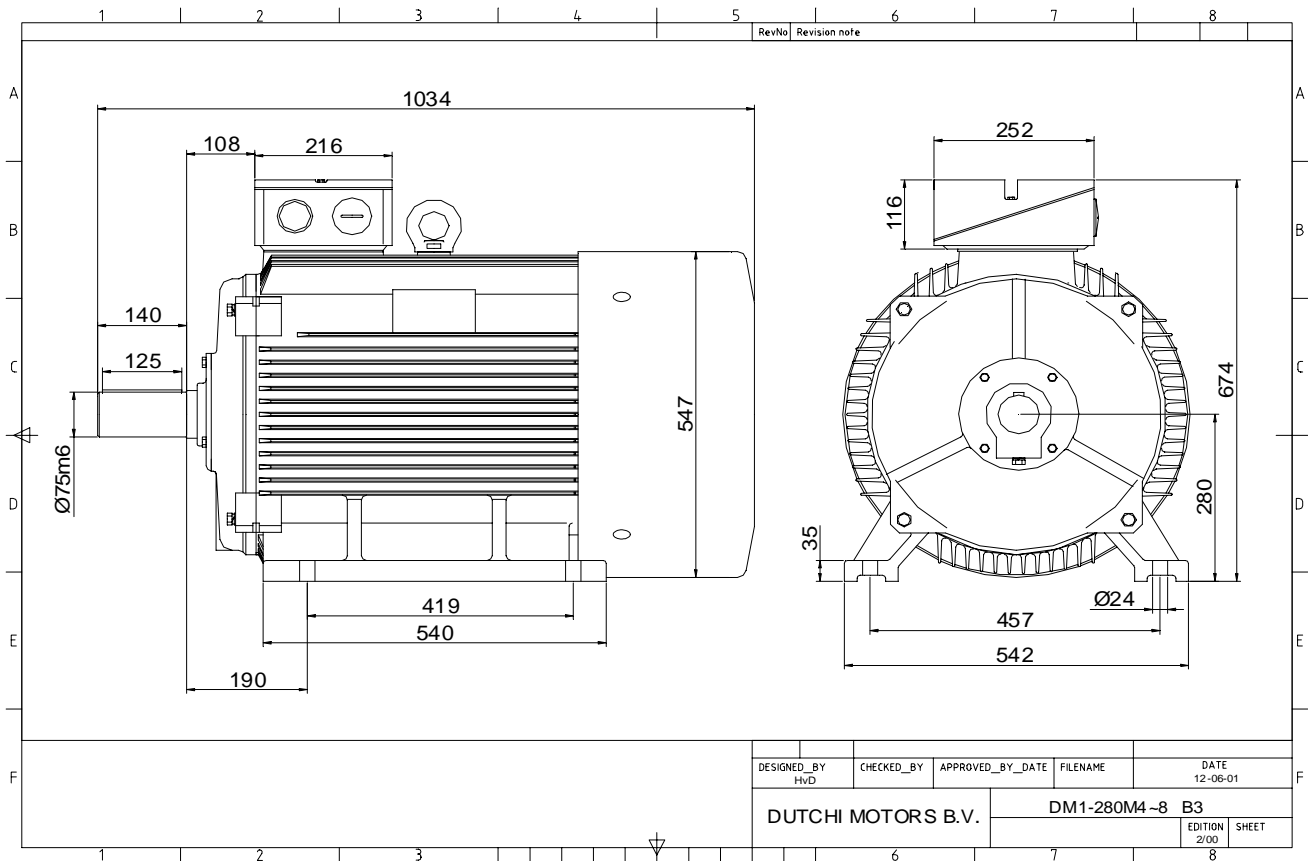


Power is our commodity, the world is our market !



Specification **IEC 60034-1**
 Manufacturer **Dutchi Motors B.V.**
 Motor type **DM1- 280 M4**
 Rated power **90,0** kW **S1** duty
 Speed **1484** r.p.m
 Voltage **400** / **690** V
 Frequency **50** Hz
 Connection **Δ** / **Y**
 Amps full load **157** / **90,5** A
 Amps no-load(400V) **49,10** A
 Enclosure **IP 55**
 Insulation Class **F (temp. rise B (80 K))**

Max. coolant temp. **40°C**
 Max. altitude **1.000** mtr, above sea level
 Comment **3 x PTC 150°C**
 Cable entries **2 x M63x1,5 + 1 x M20x1,5 (ptc)**

Feature **Cast-iron motor**
 Weight **600** kg
 Catalog no. **11134A90D**
 Warranty **12~18 months**

Efficiency class **EFF 2**
 Load data 100% 75% 50% 25%
 Efficiency **93,9 93,6 92,4 87,8** %
 Power factor **0,88 0,86 0,79 0,62**

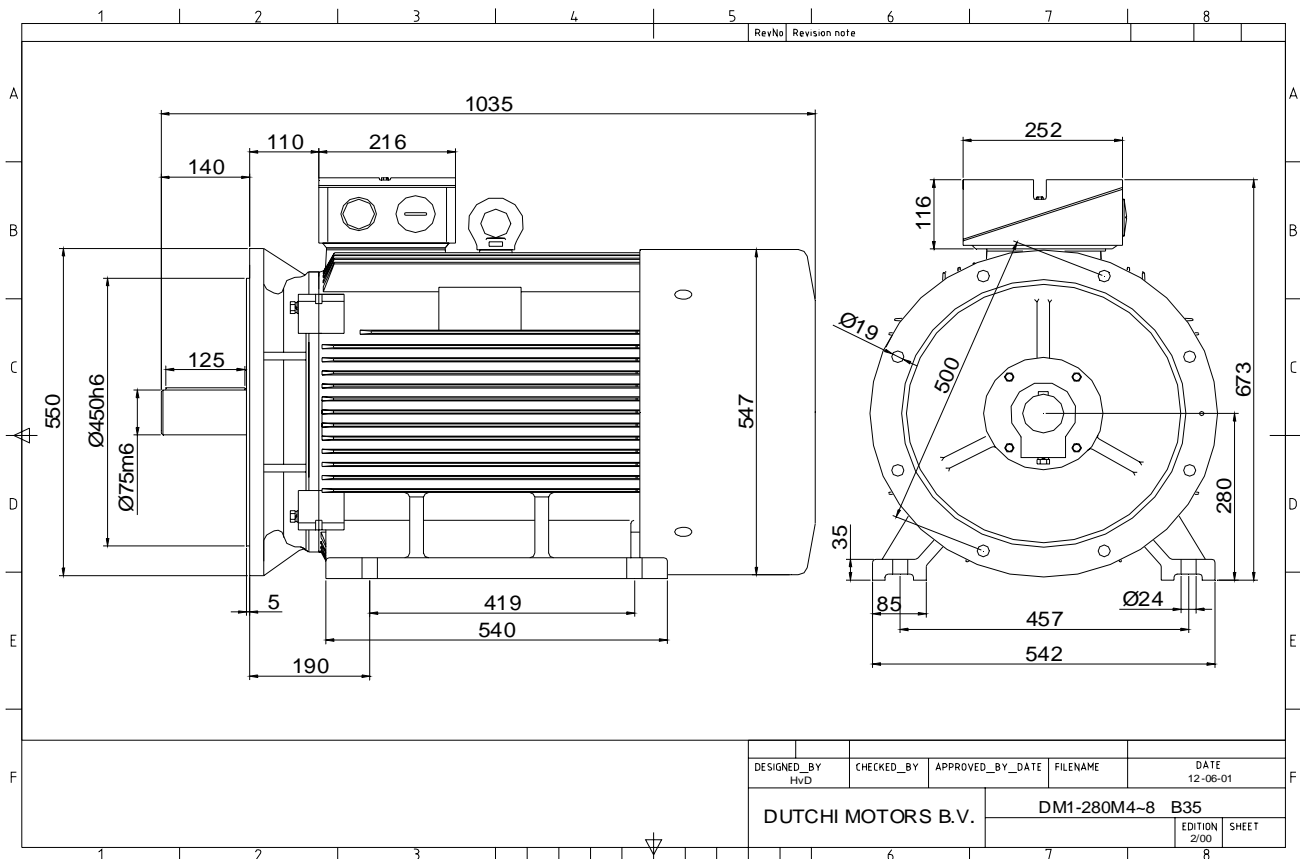
Sound pressure level (1m) **72,9** dB(A)
 Resistance R20 (open) **0,0553** Ω
 Resistance R20 **Δ 0,0369** Ω

Full load torque **579** Nm
 DOL Starting torque vs FL torque **2,50**
 DOL Pull up torque vs FL torque **1,80**
 DOL Pull out torque vs FL torque **3,48**
 Star-Delta Starting torque vs FL torque **0,78**
 Star-Delta Pull up torque vs FL torque **0,56**
 Star-Delta Pull out torque vs FL torque **1,09**
 DOL Starting current vs FL current **7,17**
 Star Delta Starting current vs FL current **2,24**
 Rotor Inertia **1,3960** kgm²

Bearing DE **6317 - C3 or NU317**
 Bearing NDE **6317 - C3**

WI	Change	date	sign.
Dutchi Motors B.V. P.O. Box 5390 NL-6802 EJ ARNHEM Tel : +31-(0)26 - 3541 600 Fax : +31-(0)26 - 3541 650		Description	date
		Drawing made by :	27-04-04
		dutchi.motors@dutchi.nl www.dutchi.com	

Power is our commodity, the world is our market !



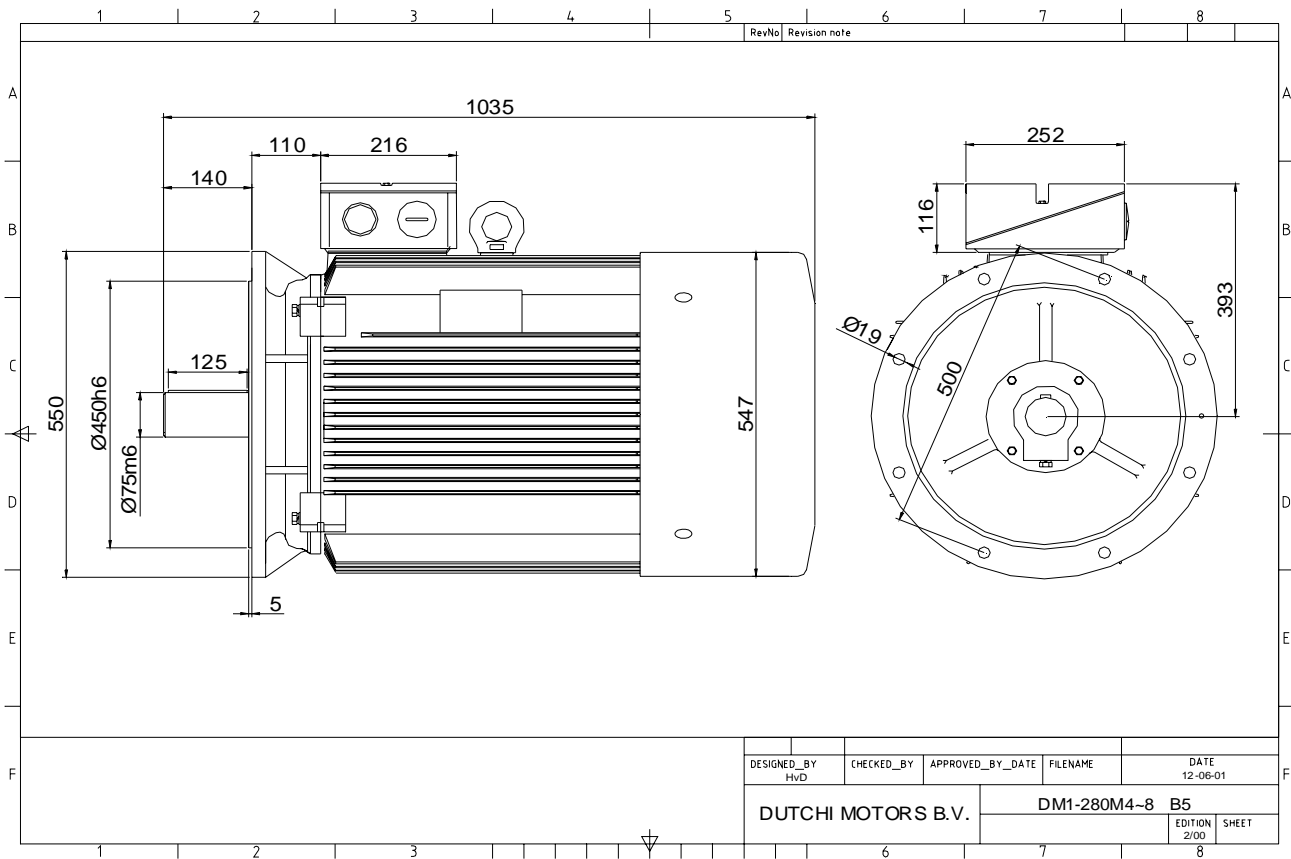
DESIGNED_BY HVD	CHECKED_BY	APPROVED_BY_DATE	FILENAME	DATE 12-06-01
DUTCHI MOTORS B.V.			DM1-280M4-8	B35
			EDITION 2/00	SHEET

Specification	IEC 60034-1
Manufacturer	Dutchi Motors B.V.
Motor type	DM1- 280 M4
Rated power	90,00 kW S1 duty
Speed	1484 r.p.m
Voltage	400 / 690 V
Frequency	50 Hz
Connection	Δ / Y
Amps full load	157 / 90,5 A
Amps no-load(400V)	49,10 A
Enclosure	IP 55
Insulation Class	F (temp. rise B (80 K))
Max. coolant temp.	40°C
Max. altitude	1.000 mtr, above sea level
Comment	3 x PTC 150°C
Cable entries	2 x M63x1,5 + 1 x M20x1,5 (ptc)
Feature	Cast-iron motor
Weight	600 kg
Catalog no.	11534A90D
Warranty	12~18 months

Efficiency class	EFF 2			
Load data	100%	75%	50%	25%
Efficiency	93,9	93,6	92,4	87,8 %
Power factor	0,88	0,86	0,79	0,62
Sound pressure level (1m)				72,9 dB(A)
Resistance R20 (open)				0,0553 Ω
Resistance R20	Δ			0,0369 Ω
Full load torque				579 Nm
DOL Starting torque vs FL torque				2,50
DOL Pull up torque vs FL torque				1,80
DOL Pull out torque vs FL torque				3,48
Star-Delta Starting torque vs FL torque				0,78
Star-Delta Pull up torque vs FL torque				0,56
Star-Delta Pull out torque vs FL torque				1,09
DOL Starting current vs FL current				7,17
Star Delta Starting current vs FL current				2,24
Rotor Inertia				1,3960 kgm ²
Bearing DE				6317 - C3 or NU317
Bearing NDE				6317 - C3

WI	Change	date	sign.
Dutchi Motors B.V. P.O. Box 5390 NL-6802 EJ ARNHEM Tel : +31-(0)26 - 3541 600 Fax : +31-(0)26 - 3541 650		Discription Drawing made by :	date 27-04-04
		sign.	HvD
		dutchi.motors@dutchi.nl www.dutchi.com	

Power is our commodity, the world is our market !

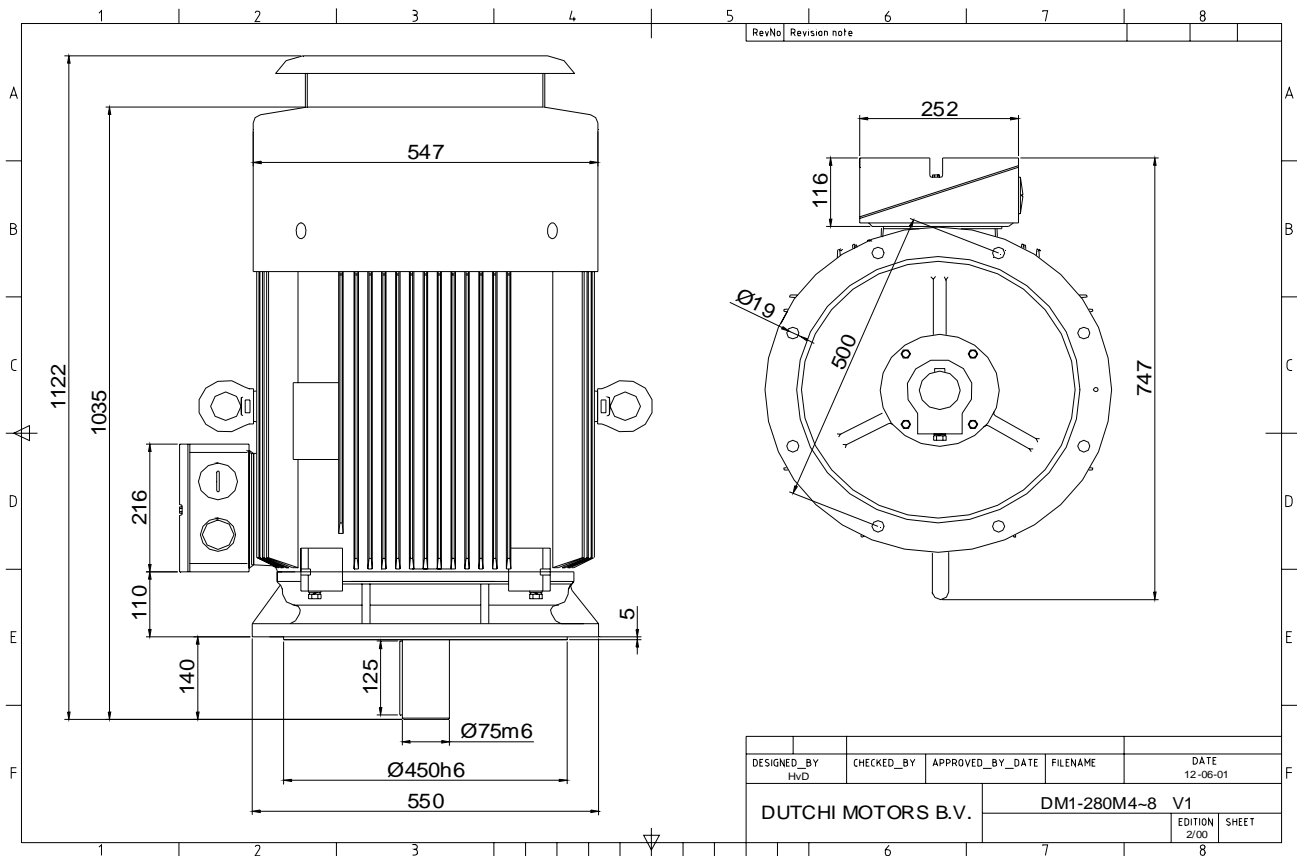


Specification	IEC 60034-1
Manufacturer	Dutchi Motors B.V.
Motor type	DM1- 280 M4
Rated power	90,00 kW S1 duty
Speed	1484 r.p.m
Voltage	400 / 690 V
Frequency	50 Hz
Connection	Δ / Y
Amps full load	157 / 90,5 A
Amps no-load(400V)	49,10 A
Enclosure	IP 55
Insulation Class	F (temp. rise B (80 K))
Max. coolant temp.	40°C
Max. altitude	1.000 mtr, above sea level
Comment	3 x PTC 150°C
Cable entries	2 x M63x1,5 + 1 x M20x1,5 (ptc)
Feature	Cast-iron motor
Weight	600 kg
Catalog no.	11234A90D
Warranty	12~18 months

Efficiency class	EFF 2			
Load data	100%	75%	50%	25%
Efficiency	93,9	93,6	92,4	87,8 %
Power factor	0,88	0,86	0,79	0,62
Sound pressure level (1m)				72,9 dB(A)
Resistance R20 (open)				0,0553 Ω
Resistance R20	Δ			0,0369 Ω
Full load torque				579 Nm
DOL Starting torque vs FL torque				2,50
DOL Pull up torque vs FL torque				1,80
DOL Pull out torque vs FL torque				3,48
Star-Delta Starting torque vs FL torque				0,78
Star-Delta Pull up torque vs FL torque				0,56
Star-Delta Pull out torque vs FL torque				1,09
DOL Starting current vs FL current				7,17
Star Delta Starting current vs FL current				2,24
Rotor Inertia				1,3960 kgm ²
Bearing DE				6317 - C3 or NU317
Bearing NDE				6317 - C3

WI	Change	date	sign.
Dutchi Motors B.V. P.O. Box 5390 NL-6802 EJ ARNHEM Tel : +31-(0)26 - 3541 600 Fax : +31-(0)26 - 3541 650		Description	date
		Drawing made by :	27-04-04
		dutchi.motors@dutchi.nl www.dutchi.com	

Power is our commodity, the world is our market !



Specification **IEC 60034-1**
 Manufacturer **Dutchi Motors B.V.**
 Motor type **DM1- 280 M4**
 Rated power **90,00 kW S1** duty
 Speed **1484** r.p.m
 Voltage **400 / 690** V
 Frequency **50** Hz
 Connection **Δ / Y**
 Amps full load **157 / 90,5** A
 Amps no-load(400V) **49,10** A
 Enclosure **IP 55**
 Insulation Class **F (temp. rise B (80 K))**

Max. coolant temp. **40°C**
 Max. altitude **1.000** mtr, above sea level
 Comment **3 x PTC 150°C**
 Cable entries **2 x M63x1,5 + 1 x M20x1,5 (ptc)**

Feature **Cast-iron motor**
 Weight **600** kg
 Catalog no. **11034A90D**
 Warranty **12~18 months**

Efficiency class **EFF 2**
 Load data 100% 75% 50% 25%
 Efficiency **93,9 93,6 92,4 87,8** %
 Power factor **0,88 0,86 0,79 0,62**

Sound pressure level (1m) **72,9** dB(A)
 Resistance R20 (open) **0,0553** Ω
 Resistance R20 **Δ 0,0369** Ω

Full load torque **579** Nm
 DOL Starting torque vs FL torque **2,50**
 DOL Pull up torque vs FL torque **1,80**
 DOL Pull out torque vs FL torque **3,48**
 Star-Delta Starting torque vs FL torque **0,78**
 Star-Delta Pull up torque vs FL torque **0,56**
 Star-Delta Pull out torque vs FL torque **1,09**
 DOL Starting current vs FL current **7,17**
 Star Delta Starting current vs FL current **2,24**
 Rotor Inertia **1,3960** kgm2

Bearing DE **6317 - C3 or NU317**
 Bearing NDE **6317 - C3**

WI	Change	date	sign.
Dutchi Motors B.V. P.O. Box 5390 NL-6802 EJ ARNHEM Tel : +31-(0)26 - 3541 600 Fax : +31-(0)26 - 3541 650		Description	date
		Drawing made by :	27-04-04
		dutchi.motors@dutchi.nl www.dutchi.com	