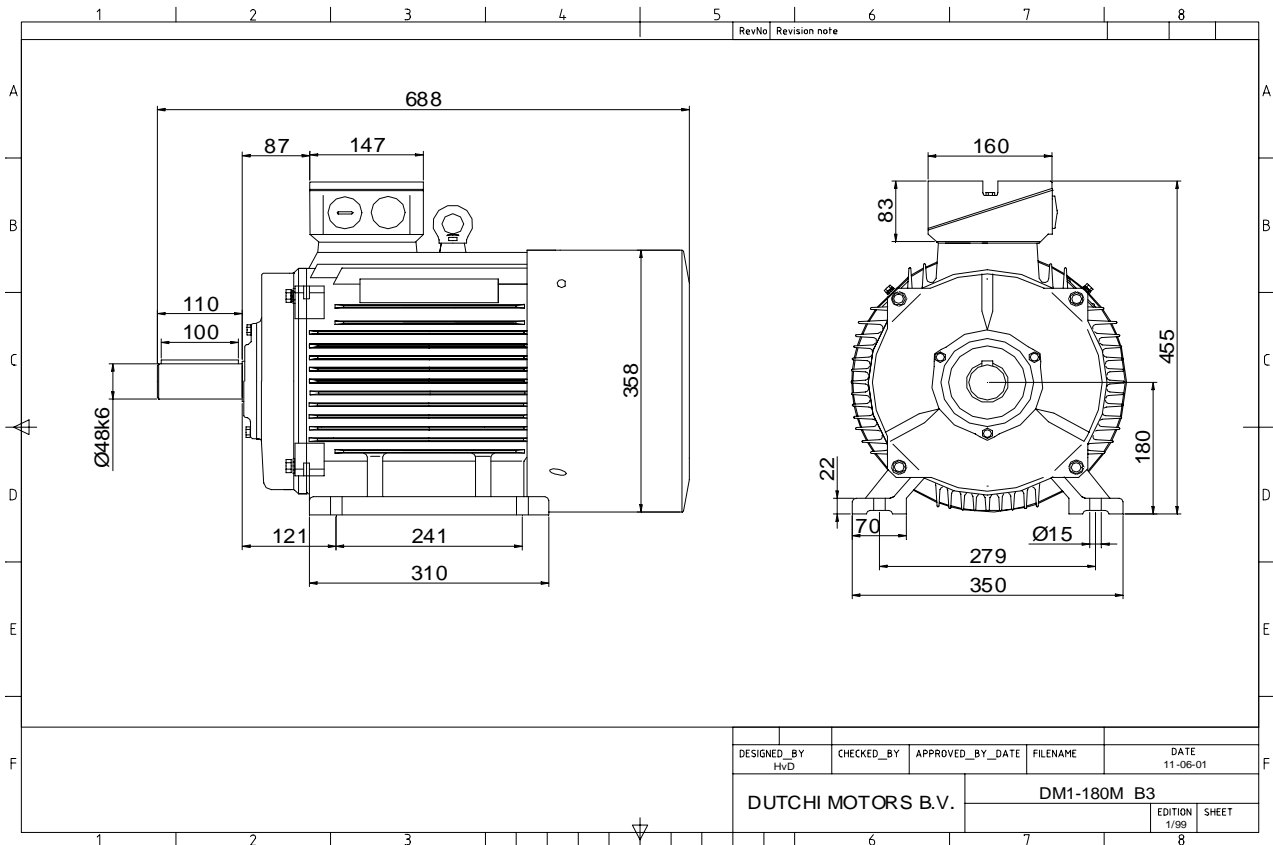


Power is our commodity, the world is our market !



Specification **IEC 60034-1**  
 Manufacturer **Dutchi Motors B.V.**  
 Motor type **DM1- 180 M4**  
 Rated power **18,50 kW S1** duty  
 Speed **1465** r.p.m  
 Voltage **400 / 690** V  
 Frequency **50** Hz  
 Connection **Δ / Y**  
 Amps full load **33,9 / 19,6** A  
 Amps no-load(400V) **13,30** A  
 Enclosure **IP 55**  
 Insulation Class **F (temp. rise B (80 K))**

Max. coolant temp. **40°C**  
 Max. altitude **1.000** mtr, above sea level  
 Comment **3 x PTC 150°C**  
 Cable entries **2 x M40x1,5 + 1 x M20x1,5 (ptc)**

Feature **Cast-iron motor**  
 Weight **175** kg  
 Catalog no. **11134A18D**  
 Warranty **12~18 months**

Efficiency class **EFF 2**  
 Load data 100% 75% 50% 25%  
 Efficiency **90,9 91,0 89,9 84,5** %  
 Power factor **0,87 0,82 0,72 0,50**

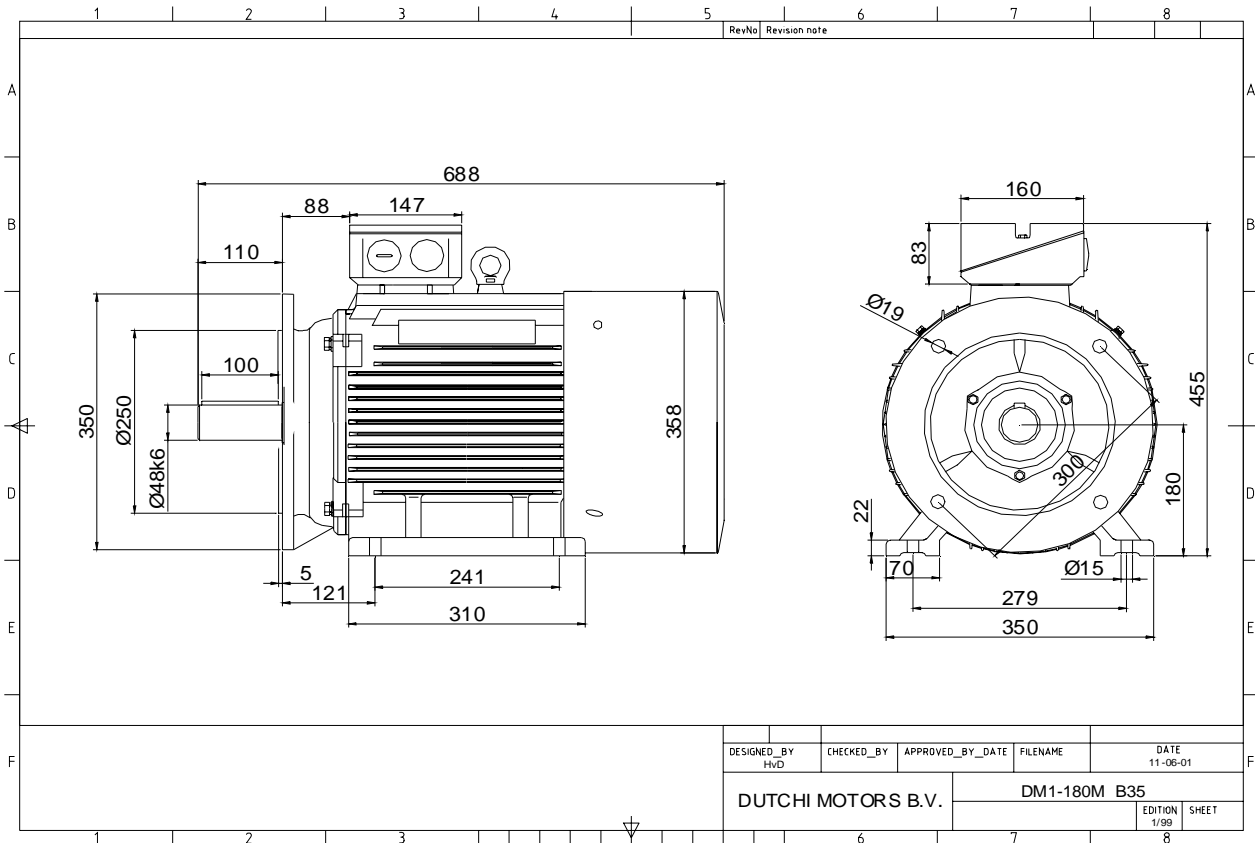
Sound pressure level (1m) **65,8** dB(A)  
 Resistance R20 (open) **0,494** Ω  
 Resistance R20 **Δ 0,329** Ω

Full load torque **120,6** Nm  
 DOL Starting torque vs FL torque **2,26**  
 DOL Pull up torque vs FL torque **1,62**  
 DOL Pull out torque vs FL torque **3,15**  
 Star-Delta Starting torque vs FL torque **0,71**  
 Star-Delta Pull up torque vs FL torque **0,51**  
 Star-Delta Pull out torque vs FL torque **0,98**  
 DOL Starting current vs FL current **7,43**  
 Star Delta Starting current vs FL current **2,32**  
 Rotor Inertia **0,1350** kgm<sup>2</sup>

Bearing DE **6311 - ZZ C3**  
 Bearing NDE **6311 - ZZ C3**


WI	Change	date	sign.
<b>Dutchi Motors B.V.</b> P.O. Box 5390 NL-6802 EJ ARNHEM Tel : +31-(0)26 - 3541 600 Fax : +31-(0)26 - 3541 650		Discription Drawing made by : 27-04-04	date sign. HvD
dutchi.motors@dutchi.nl www.dutchi.com			

Power is our commodity, the world is our market !



Specification **IEC 60034-1**  
 Manufacturer **Dutchi Motors B.V.**  
 Motor type **DM1- 180 M4**  
 Rated power **18,50 kW S1** duty  
 Speed **1465** r.p.m  
 Voltage **400 / 690** V  
 Frequency **50** Hz  
 Connection **Δ / Y**  
 Amps full load **33,9 / 19,6** A  
 Amps no-load(400V) **13,30** A  
 Enclosure **IP 55**  
 Insulation Class **F (temp. rise B (80 K))**

Max. coolant temp. **40°C**  
 Max. altitude **1.000** mtr, above sea level  
 Comment **3 x PTC 150°C**  
 Cable entries **2 x M40x1,5 + 1 x M20x1,5 (ptc)**

Feature **Cast-iron motor**  
 Weight **175** kg  
 Catalog no. **11534A18D**  
 Warranty **12~18 months**

Efficiency class **EFF 2**  
 Load data 100% 75% 50% 25%  
 Efficiency **90,9 91,0 89,9 84,5** %  
 Power factor **0,87 0,82 0,72 0,50**

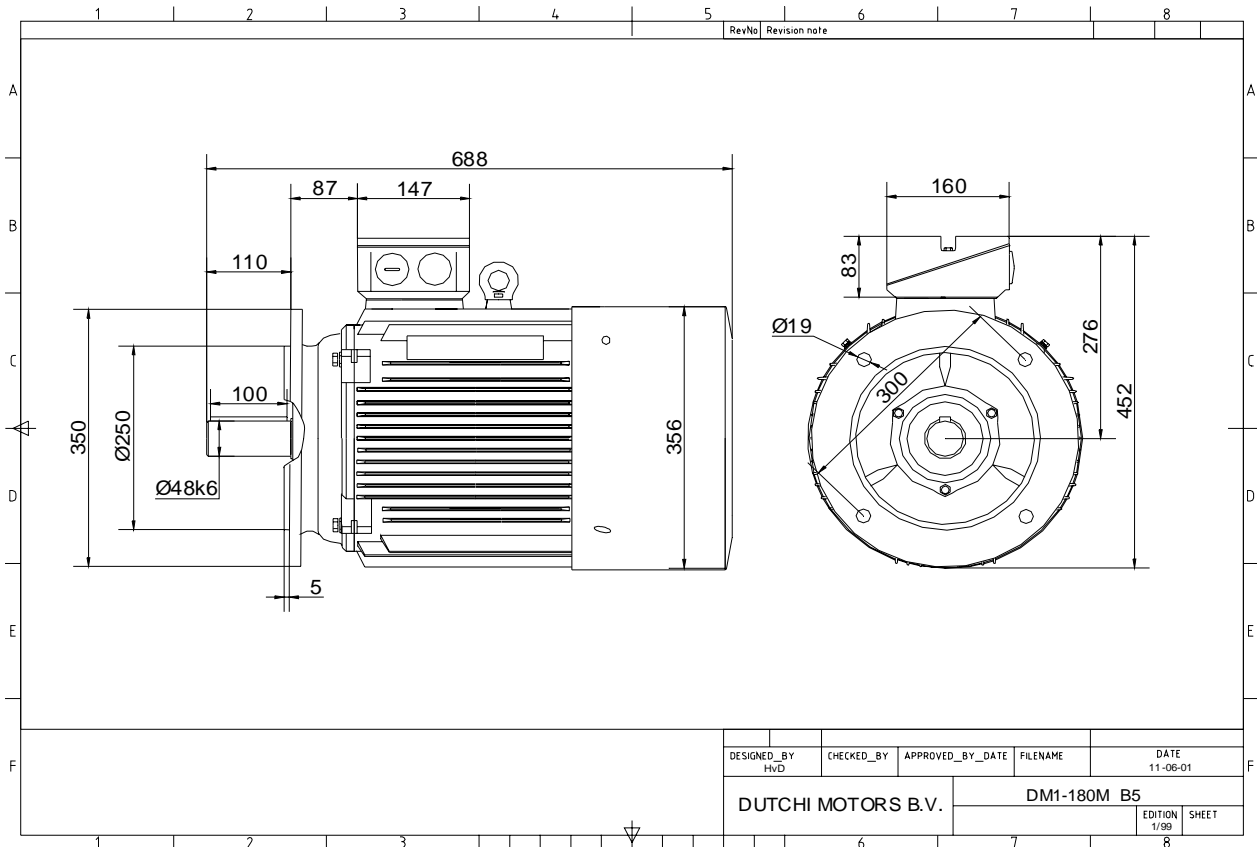
Sound pressure level (1m) **65,8** dB(A)  
 Resistance R20 (open) **0,494** Ω  
 Resistance R20 **Δ 0,329** Ω

Full load torque **120,6** Nm  
 DOL Starting torque vs FL torque **2,26**  
 DOL Pull up torque vs FL torque **1,62**  
 DOL Pull out torque vs FL torque **3,15**  
 Star-Delta Starting torque vs FL torque **0,71**  
 Star-Delta Pull up torque vs FL torque **0,51**  
 Star-Delta Pull out torque vs FL torque **0,98**  
 DOL Starting current vs FL current **7,43**  
 Star Delta Starting current vs FL current **2,32**  
 Rotor Inertia **0,1350** kgm<sup>2</sup>

Bearing DE **6311 - ZZ C3**  
 Bearing NDE **6311 - ZZ C3**


WI	Change	date	sign.
<b>Dutchi Motors B.V.</b> P.O. Box 5390 NL-6802 EJ ARNHEM Tel : +31-(0)26 - 3541 600 Fax : +31-(0)26 - 3541 650		Description	date
		Drawing made by :	27-04-04
		<b>dutchi.motors@dutchi.nl</b> <b>www.dutchi.com</b>	

Power is our commodity, the world is our market !



Specification **IEC 60034-1**  
 Manufacturer **Dutchi Motors B.V.**  
 Motor type **DM1- 180 M4**  
 Rated power **18,50 kW S1** duty  
 Speed **1465** r.p.m  
 Voltage **400 / 690** V  
 Frequency **50** Hz  
 Connection **Δ / Y**  
 Amps full load **33,9 / 19,6** A  
 Amps no-load(400V) **13,30** A  
 Enclosure **IP 55**  
 Insulation Class **F (temp. rise B (80 K))**

Max. coolant temp. **40°C**  
 Max. altitude **1.000** mtr, above sea level  
 Comment **3 x PTC 150°C**  
 Cable entries **2 x M40x1,5 + 1 x M20x1,5 (ptc)**

Feature **Cast-iron motor**  
 Weight **175** kg  
 Catalog no. **11234A18D**  
 Warranty **12~18 months**

Efficiency class **EFF 2**  
 Load data 100% 75% 50% 25%  
 Efficiency **90,9 91,0 89,9 84,5** %  
 Power factor **0,87 0,82 0,72 0,50**

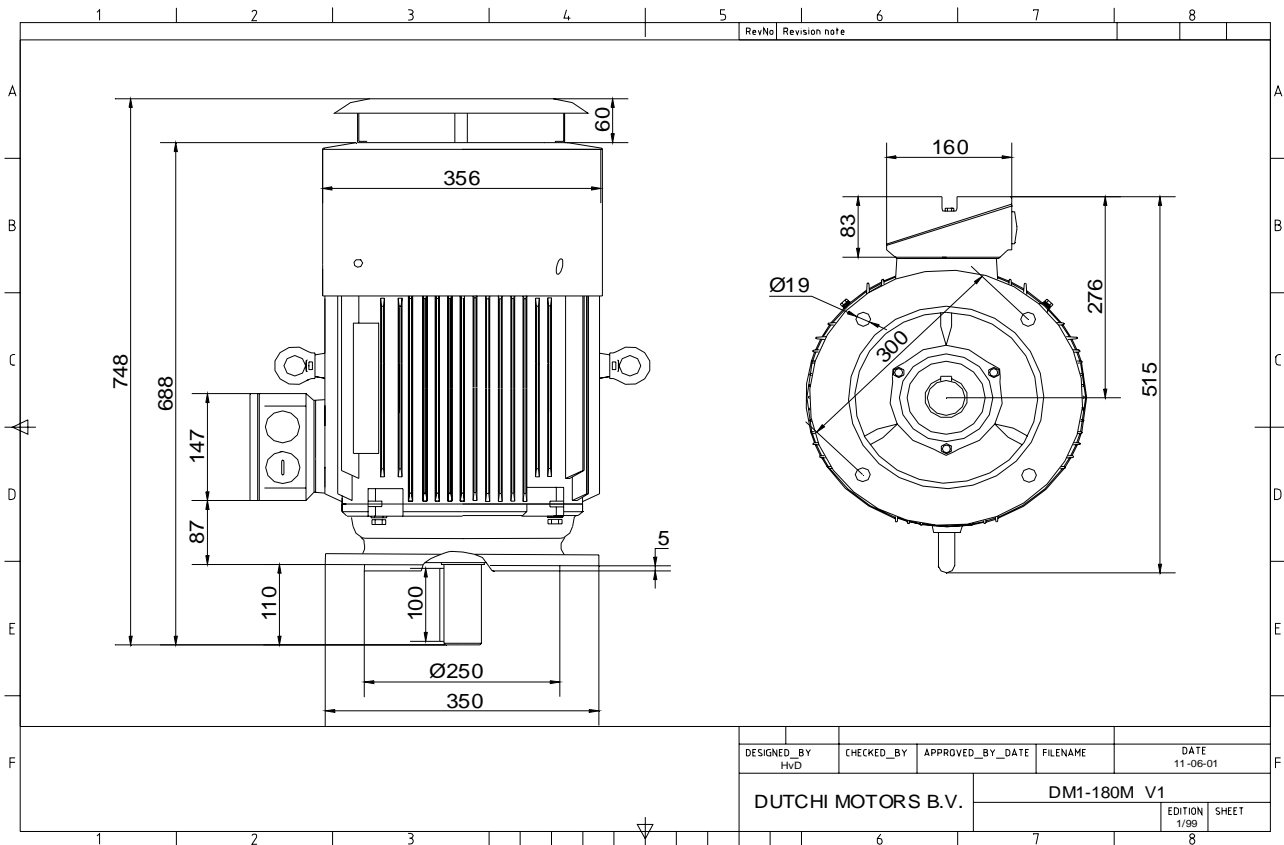
Sound pressure level (1m) **65,8** dB(A)  
 Resistance R20 (open) **0,494** Ω  
 Resistance R20 **Δ 0,329** Ω

Full load torque **120,6** Nm  
 DOL Starting torque vs FL torque **2,26**  
 DOL Pull up torque vs FL torque **1,62**  
 DOL Pull out torque vs FL torque **3,15**  
 Star-Delta Starting torque vs FL torque **0,71**  
 Star-Delta Pull up torque vs FL torque **0,51**  
 Star-Delta Pull out torque vs FL torque **0,98**  
 DOL Starting current vs FL current **7,43**  
 Star Delta Starting current vs FL current **2,32**  
 Rotor Inertia **0,1350** kgm<sup>2</sup>

Bearing DE **6311 - ZZ C3**  
 Bearing NDE **6311 - ZZ C3**


WI	Change	date	sign.
<b>Dutchi Motors B.V.</b> P.O. Box 5390 NL-6802 EJ ARNHEM Tel : +31-(0)26 - 3541 600 Fax : +31-(0)26 - 3541 650		Discription Drawing made by : 27-04-04	date sign. HVD
dutchi.motors@dutchi.nl www.dutchi.com			

Power is our commodity, the world is our market !



Specification **IEC 60034-1**  
 Manufacturer **Dutchi Motors B.V.**  
 Motor type **DM1- 180 M4**  
 Rated power **18,50 kW S1** duty  
 Speed **1465** r.p.m  
 Voltage **400 / 690** V  
 Frequency **50** Hz  
 Connection **Δ / Y**  
 Amps full load **33,9 / 19,6** A  
 Amps no-load(400V) **13,30** A  
 Enclosure **IP 55**  
 Insulation Class **F (temp. rise B (80 K))**

Max. coolant temp. **40°C**  
 Max. altitude **1.000** mtr, above sea level  
 Comment **3 x PTC 150°C**  
 Cable entries **2 x M40x1,5 + 1 x M20x1,5 (ptc)**

Feature **Cast-iron motor**  
 Weight **175** kg  
 Catalog no. **11034A18D**  
 Warranty **12~18 months**

Efficiency class **EFF 2**  
 Load data 100% 75% 50% 25%  
 Efficiency **90,9 91,0 89,9 84,5** %  
 Power factor **0,87 0,82 0,72 0,50**

Sound pressure level (1m) **65,8** dB(A)  
 Resistance R20 (open) **0,494** Ω  
 Resistance R20 **Δ 0,329** Ω

Full load torque **120,6** Nm  
 DOL Starting torque vs FL torque **2,26**  
 DOL Pull up torque vs FL torque **1,62**  
 DOL Pull out torque vs FL torque **3,15**  
 Star-Delta Starting torque vs FL torque **0,71**  
 Star-Delta Pull up torque vs FL torque **0,51**  
 Star-Delta Pull out torque vs FL torque **0,98**  
 DOL Starting current vs FL current **7,43**  
 Star Delta Starting current vs FL current **2,32**  
 Rotor Inertia **0,1350** kgm<sup>2</sup>

Bearing DE **6311 - ZZ C3**  
 Bearing NDE **6311 - ZZ C3**


WI	Change	date	sign.
<b>Dutchi Motors B.V.</b> P.O. Box 5390 NL-6802 EJ ARNHEM Tel : +31-(0)26 - 3541 600 Fax : +31-(0)26 - 3541 650		Description	date
		Drawing made by :	27-04-04
		<b>dutchi.motors@dutchi.nl</b> <b>www.dutchi.com</b>	