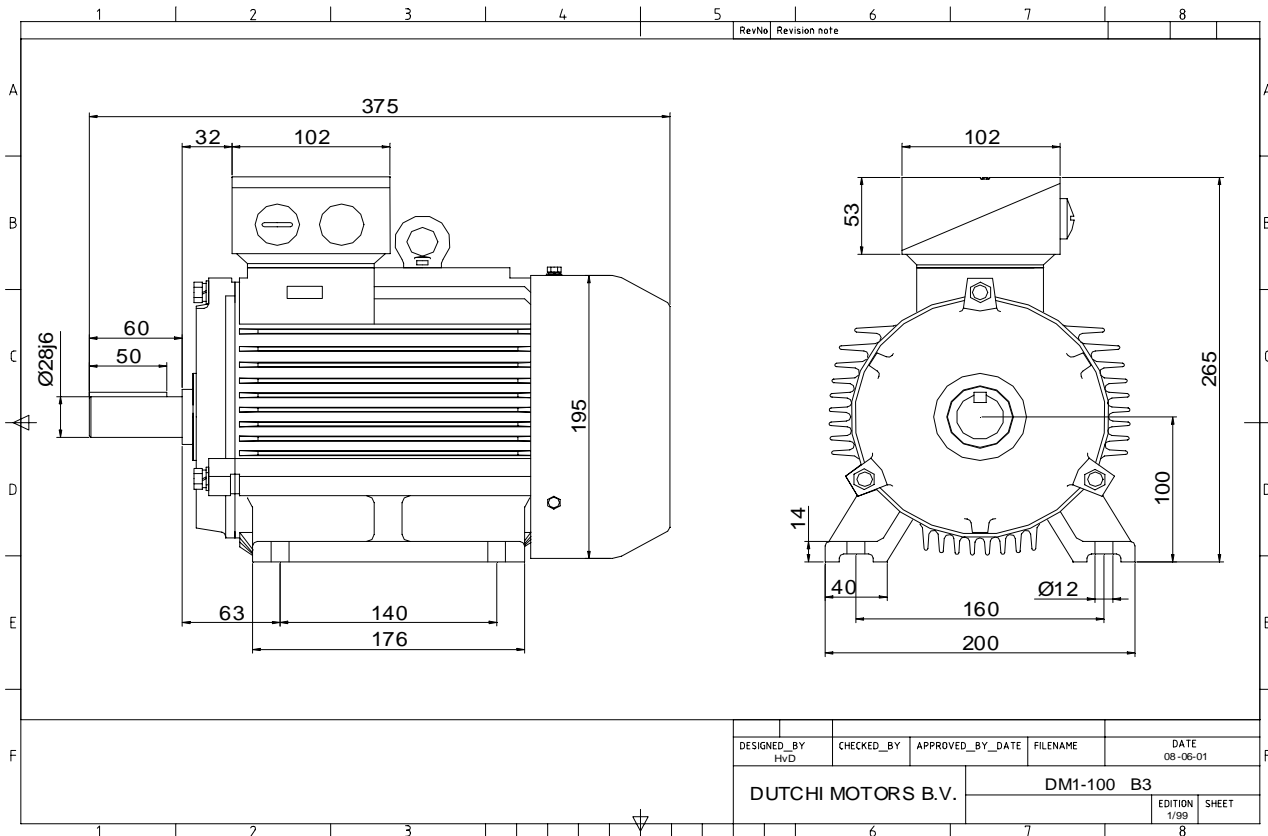


Power is our commodity, the world is our market !



DESIGNED_BY HVD	CHECKED_BY	APPROVED_BY_DATE	FILENAME	DATE 08-06-01
DUTCHI MOTORS B.V.			DM1-100 B3	EDITION 1/99
				SHEET

Specification **IEC 60034-1**
 Manufacturer **Dutchi Motors B.V.**
 Motor type **DM1- 100 LY4**
 Rated power **4** kW **S1** duty
 Speed **1400** r.p.m
 Voltage **400** / **690** V
 Frequency **50** Hz
 Connection **Δ** / **Y**
 Amps full load **8,31** / **4,80** A
 Amps no-load(400V) **3,80** A
 Enclosure **IP 55**
 Insulation Class **F (temp. rise B (80 K))**

Max. coolant temp. **40°C**
 Max. altitude **1.000** mtr, above sea level
 Comment **3 x PTC 150°C**
 Cable entries **2 x M25x1,5 + 1 x M20x1,5 (ptc)**

Feature **Cast-iron motor**
 Weight **42,0** kg
 Catalog no. **11134400DV**
 Warranty **12~18 months**

Efficiency class **N/A**
 Load data 100% 75% 50% 25%
 Efficiency **80,8 82,5 82,1 74,8** %
 Power factor **0,86 0,81 0,71 0,48**

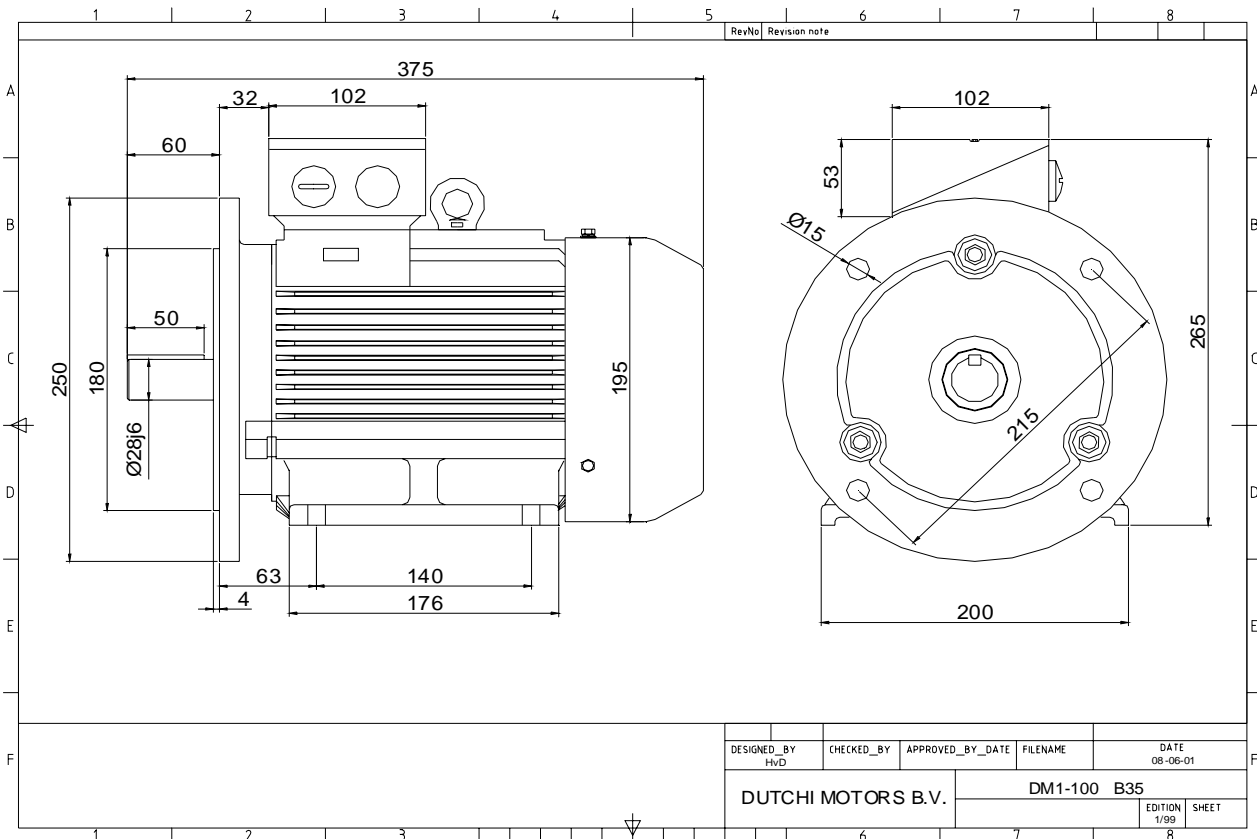
Sound pressure level (1m) **51,8** dB(A)
 Resistance R20 (open) **4,33** Ω
 Resistance R20 **Δ 2,89** Ω

Full load torque **27,29** Nm
 DOL Starting torque vs FL torque **2,60**
 DOL Pull up torque vs FL torque **1,57**
 DOL Pull out torque vs FL torque **2,78**
 Star-Delta Starting torque vs FL torque **0,81**
 Star-Delta Pull up torque vs FL torque **0,49**
 Star-Delta Pull out torque vs FL torque **0,87**
 DOL Starting current vs FL current **6,27**
 Star Delta Starting current vs FL current **1,96**
 Rotor Inertia **0,0067** kgm²

Bearing DE **6206 - ZZ C3**
 Bearing NDE **6206 - ZZ C3**

WI	Change	date	sign.
Dutchi Motors B.V.		Description	date
P.O. Box 5390		Drawing made by :	19-04-04
NL-6802 EJ ARNHEM			
Tel : +31-(0)26 - 3541 600		dutchi.motors@dutchi.nl	
Fax : +31-(0)26 - 3541 650		www.dutchi.com	

Power is our commodity, the world is our market !

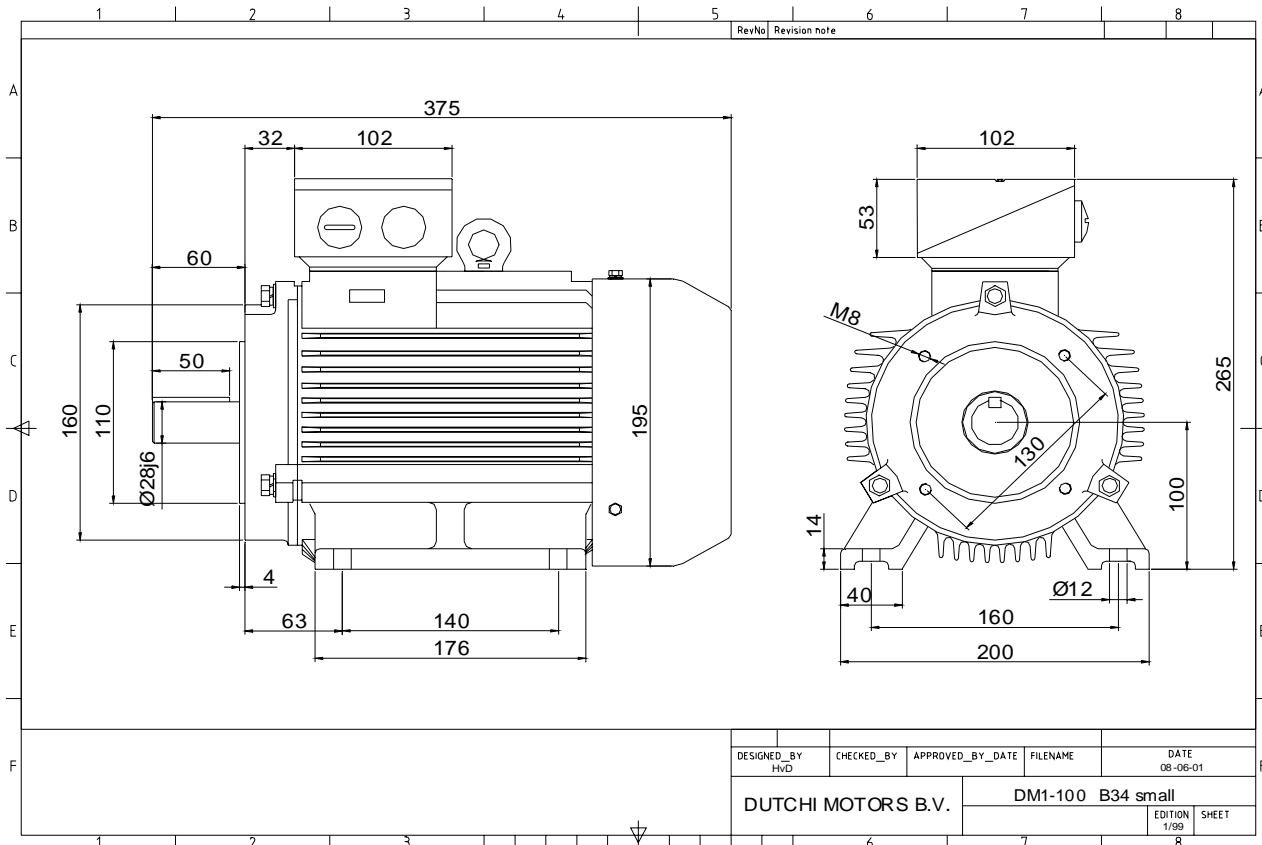


Specification	IEC 60034-1
Manufacturer	Dutchi Motors B.V.
Motor type	DM1- 100 LY4
Rated power	4 kW S1 duty
Speed	1400 r.p.m
Voltage	400 / 690 V
Frequency	50 Hz
Connection	Δ / Y
Amps full load	8,31 / 4,80 A
Amps no-load(400V)	3,80 A
Enclosure	IP 55
Insulation Class	F (temp. rise B (80 K))
Max. coolant temp.	40°C
Max. altitude	1.000 mtr, above sea level
Comment	3 x PTC 150°C
Cable entries	2 x M25x1,5 + 1 x M20x1,5 (ptc)
Feature	Cast-iron motor
Weight	42,0 kg
Catalog no.	11534400DV
Warranty	12~18 months

Efficiency class	N/A			
Load data	100%	75%	50%	25%
Efficiency	80,8	82,5	82,1	74,8 %
Power factor	0,86	0,81	0,71	0,48
Sound pressure level (1m)				51,8 dB(A)
Resistance R20 (open)				4,33 Ω
Resistance R20	Δ			2,89 Ω
Full load torque				27,29 Nm
DOL Starting torque vs FL torque				2,60
DOL Pull up torque vs FL torque				1,57
DOL Pull out torque vs FL torque				2,78
Star-Delta Starting torque vs FL torque				0,81
Star-Delta Pull up torque vs FL torque				0,49
Star-Delta Pull out torque vs FL torque				0,87
DOL Starting current vs FL current				6,27
Star Delta Starting current vs FL current				1,96
Rotor Inertia				0,0067 kgm ²
Bearing DE				6206 - ZZ C3
Bearing NDE				6206 - ZZ C3

WI	Change	date	sign.
Dutchi Motors B.V. P.O. Box 5390 NL-6802 EJ ARNHEM Tel : +31-(0)26 - 3541 600 Fax : +31-(0)26 - 3541 650		Discription Drawing made by :	date 19-04-04 sign. HvD
dutchi.motors@dutchi.nl www.dutchi.com			

Power is our commodity, the world is our market !

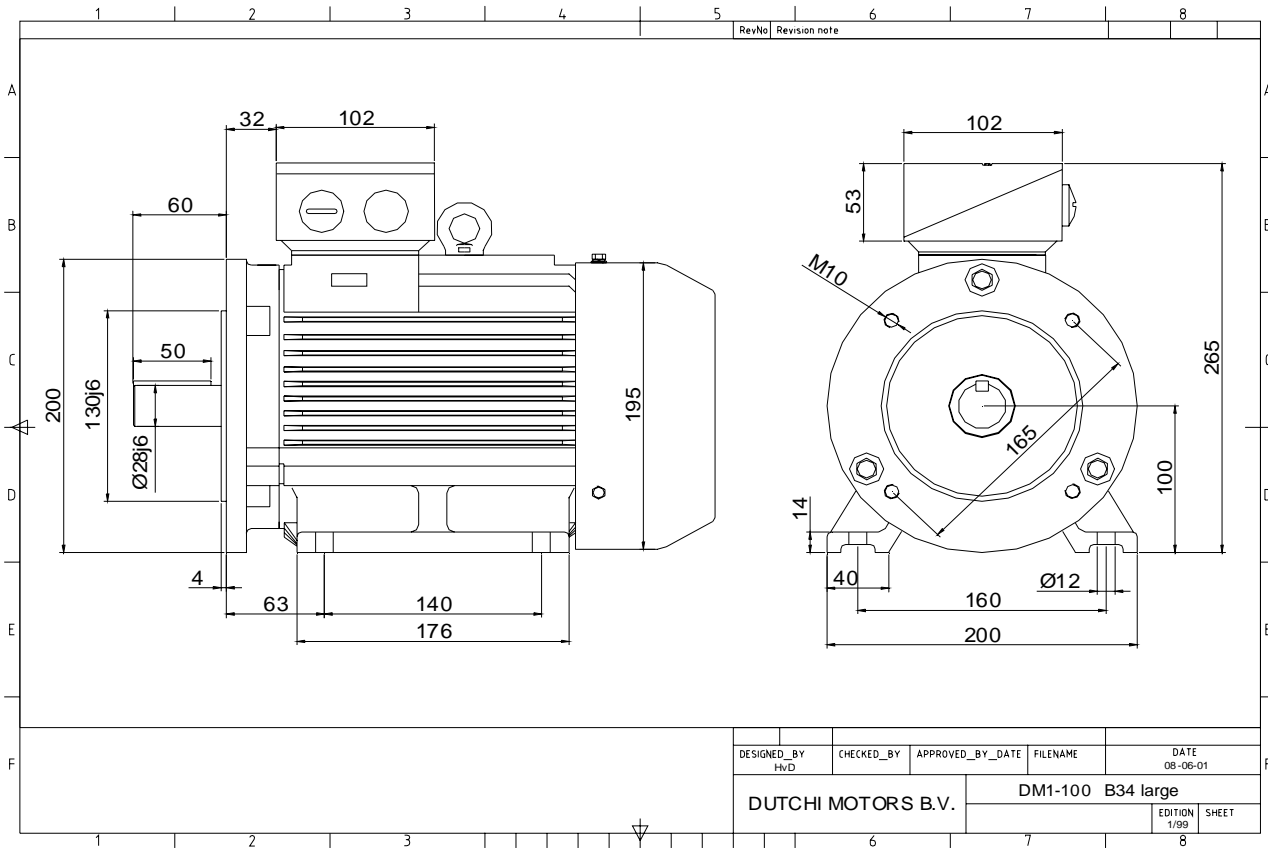


Specification	IEC 60034-1
Manufacturer	Dutchi Motors B.V.
Motor type	DM1- 100 LY4
Rated power	4 kW S1 duty
Speed	1400 r.p.m
Voltage	400 / 690 V
Frequency	50 Hz
Connection	Δ / Y
Amps full load	8,31 / 4,80 A
Amps no-load(400V)	3,80 A
Enclosure	IP 55
Insulation Class	F (temp. rise B (80 K))
Max. coolant temp.	40°C
Max. altitude	1.000 mtr, above sea level
Comment	3 x PTC 150°C
Cable entries	2 x M25x1,5 + 1 x M20x1,5 (ptc)
Feature	Cast-iron motor
Weight	42,0 kg
Catalog no.	11634400DV
Warranty	12~18 months

Efficiency class	N/A			
Load data	100%	75%	50%	25%
Efficiency	80,8	82,5	82,1	74,8 %
Power factor	0,86	0,81	0,71	0,48
Sound pressure level (1m)				51,8 dB(A)
Resistance R20 (open)				4,33 Ω
Resistance R20	Δ			2,89 Ω
Full load torque				27,29 Nm
DOL Starting torque vs FL torque				2,60
DOL Pull up torque vs FL torque				1,57
DOL Pull out torque vs FL torque				2,78
Star-Delta Starting torque vs FL torque				0,81
Star-Delta Pull up torque vs FL torque				0,49
Star-Delta Pull out torque vs FL torque				0,87
DOL Starting current vs FL current				6,27
Star Delta Starting current vs FL current				1,96
Rotor Inertia				0,0067 kgm ²
Bearing DE				6206 - ZZ C3
Bearing NDE				6206 - ZZ C3

WI	Change	date	sign.
Dutchi Motors B.V. P.O. Box 5390 NL-6802 EJ ARNHEM Tel : +31-(0)26 - 3541 600 Fax : +31-(0)26 - 3541 650		Description	date
		Drawing made by :	19-04-04
		dutchi.motors@dutchi.nl www.dutchi.com	

Power is our commodity, the world is our market !



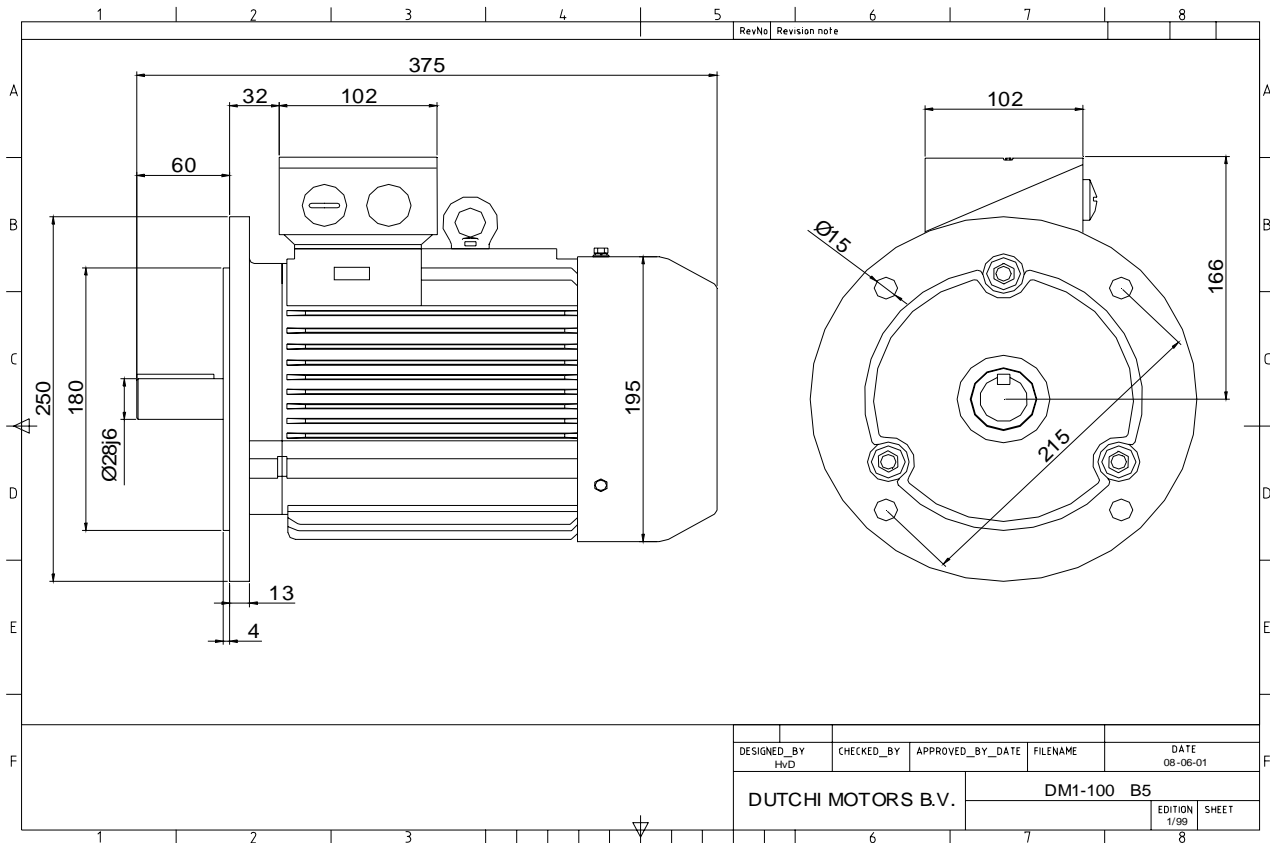
DESIGNED_BY HVD	CHECKED_BY	APPROVED_BY_DATE	FILENAME	DATE 08-06-01
DUTCHI MOTORS B.V.			DM1-100 B34 large	
			EDITION 1/99	SHEET

Specification	IEC 60034-1
Manufacturer	Dutchi Motors B.V.
Motor type	DM1- 100 LY4
Rated power	4 kW S1 duty
Speed	1400 r.p.m
Voltage	400 / 690 V
Frequency	50 Hz
Connection	Δ / Y
Amps full load	8,31 / 4,80 A
Amps no-load(400V)	3,80 A
Enclosure	IP 55
Insulation Class	F (temp. rise B (80 K))
Max. coolant temp.	40°C
Max. altitude	1.000 mtr, above sea level
Comment	3 x PTC 150°C
Cable entries	2 x M25x1,5 + 1 x M20x1,5 (ptc)
Feature	Cast-iron motor
Weight	42,0 kg
Catalog no.	11734400DV
Warranty	12~18 months

Efficiency class	N/A			
Load data	100%	75%	50%	25%
Efficiency	80,8	82,5	82,1	74,8 %
Power factor	0,86	0,81	0,71	0,48
Sound pressure level (1m)				51,8 dB(A)
Resistance R20 (open)				4,33 Ω
Resistance R20	Δ			2,89 Ω
Full load torque				27,29 Nm
DOL Starting torque vs FL torque				2,60
DOL Pull up torque vs FL torque				1,57
DOL Pull out torque vs FL torque				2,78
Star-Delta Starting torque vs FL torque				0,81
Star-Delta Pull up torque vs FL torque				0,49
Star-Delta Pull out torque vs FL torque				0,87
DOL Starting current vs FL current				6,27
Star Delta Starting current vs FL current				1,96
Rotor Inertia				0,0067 kgm ²
Bearing DE				6206 - ZZ C3
Bearing NDE				6206 - ZZ C3

WI	Change	date	sign.
Dutchi Motors B.V.		Description	date
P.O. Box 5390		Drawing made by :	19-04-04
NL-6802 EJ ARNHEM			
Tel : +31-(0)26 - 3541 600		dutchi.motors@dutchi.nl	
Fax : +31-(0)26 - 3541 650		www.dutchi.com	

Power is our commodity, the world is our market !



Specification **IEC 60034-1**
 Manufacturer **Dutchi Motors B.V.**
 Motor type **DM1- 100 LY4**
 Rated power **4** kW **S1** duty
 Speed **1400** r.p.m
 Voltage **400 / 690** V
 Frequency **50** Hz
 Connection **Δ / Y**
 Amps full load **8,31 / 4,80** A
 Amps no-load(400V) **3,80** A
 Enclosure **IP 55**
 Insulation Class **F (temp. rise B (80 K))**

Max. coolant temp. **40°C**
 Max. altitude **1.000** mtr, above sea level
 Comment **3 x PTC 150°C**
 Cable entries **2 x M25x1,5 + 1 x M20x1,5 (ptc)**

Feature **Cast-iron motor**
 Weight **42,0** kg
 Catalog no. **11234400DV**
 Warranty **12~18 months**

Efficiency class **N/A**
 Load data 100% 75% 50% 25%
 Efficiency **80,8 82,5 82,1 74,8** %
 Power factor **0,86 0,81 0,71 0,48**

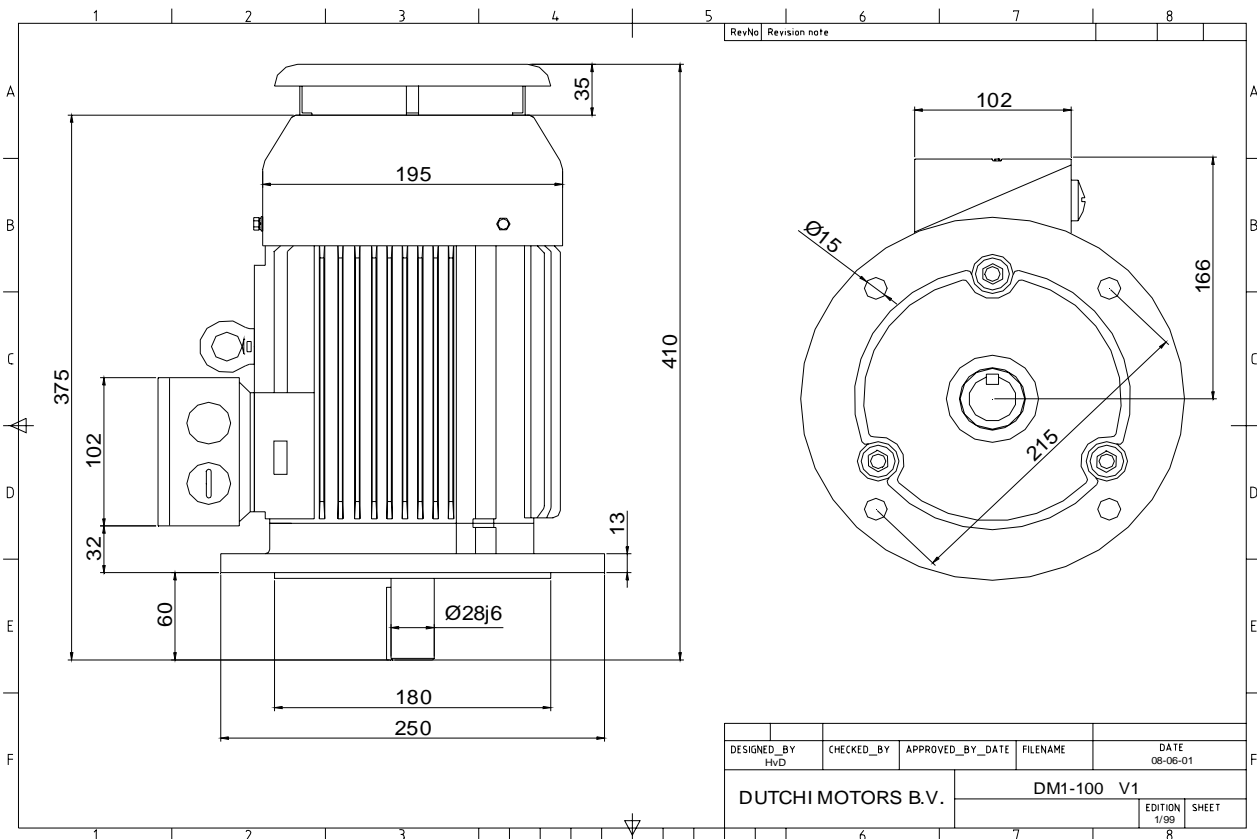
Sound pressure level (1m) **51,8** dB(A)
 Resistance R20 (open) **4,33** Ω
 Resistance R20 **Δ 2,89** Ω

Full load torque **27,29** Nm
 DOL Starting torque vs FL torque **2,60**
 DOL Pull up torque vs FL torque **1,57**
 DOL Pull out torque vs FL torque **2,78**
 Star-Delta Starting torque vs FL torque **0,81**
 Star-Delta Pull up torque vs FL torque **0,49**
 Star-Delta Pull out torque vs FL torque **0,87**
 DOL Starting current vs FL current **6,27**
 Star Delta Starting current vs FL current **1,96**
 Rotor Inertia **0,0067** kgm2

Bearing DE **6206 - ZZ C3**
 Bearing NDE **6206 - ZZ C3**

WI	Change	date	sign.
Dutchi Motors B.V.		Description	date
P.O. Box 5390		Drawing made by :	19-04-04
NL-6802 EJ ARNHEM			
Tel : +31-(0)26 - 3541 600		dutchi.motors@dutchi.nl	
Fax : +31-(0)26 - 3541 650		www.dutchi.com	

Power is our commodity, the world is our market !



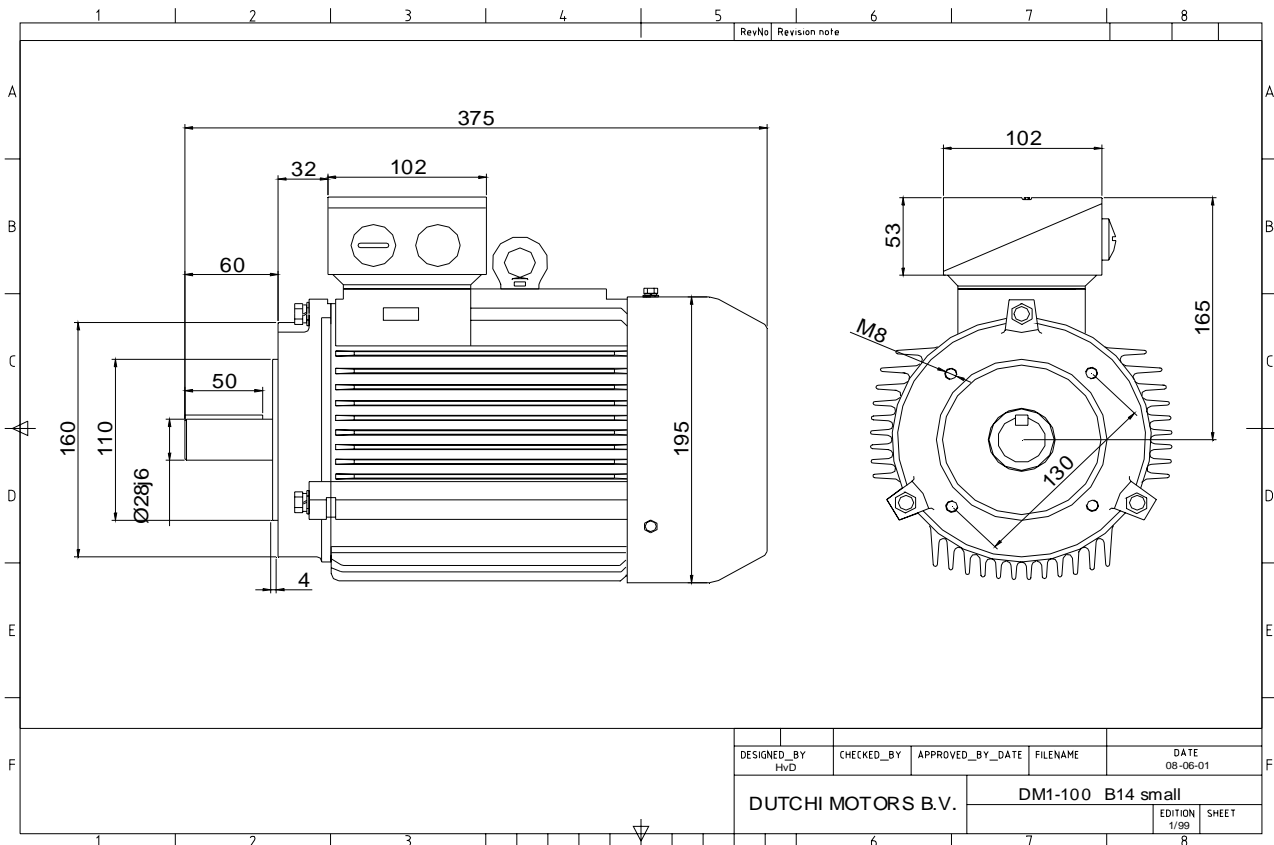
DESIGNED_BY HVD	CHECKED_BY	APPROVED_BY_DATE	FILENAME	DATE 08-06-01
DUTCHI MOTORS B.V.			DM1-100 V1	EDITION 1/99
				SHEET

Specification	IEC 60034-1
Manufacturer	Dutchi Motors B.V.
Motor type	DM1- 100 LY4
Rated power	4 kW S1 duty
Speed	1400 r.p.m
Voltage	400 / 690 V
Frequency	50 Hz
Connection	Δ / Y
Amps full load	8,31 / 4,80 A
Amps no-load(400V)	3,80 A
Enclosure	IP 55
Insulation Class	F (temp. rise B (80 K))
Max. coolant temp.	40°C
Max. altitude	1.000 mtr, above sea level
Comment	3 x PTC 150°C
Cable entries	2 x M25x1,5 + 1 x M20x1,5 (ptc)
Feature	Cast-iron motor
Weight	42,0 kg
Catalog no.	11034400DV
Warranty	12~18 months

Efficiency class	N/A			
Load data	100%	75%	50%	25%
Efficiency	80,8	82,5	82,1	74,8 %
Power factor	0,86	0,81	0,71	0,48
Sound pressure level (1m)				51,8 dB(A)
Resistance R20 (open)				4,33 Ω
Resistance R20	Δ			2,89 Ω
Full load torque				27,29 Nm
DOL Starting torque vs FL torque				2,60
DOL Pull up torque vs FL torque				1,57
DOL Pull out torque vs FL torque				2,78
Star-Delta Starting torque vs FL torque				0,81
Star-Delta Pull up torque vs FL torque				0,49
Star-Delta Pull out torque vs FL torque				0,87
DOL Starting current vs FL current				6,27
Star Delta Starting current vs FL current				1,96
Rotor Inertia				0,0067 kgm ²
Bearing DE				6206 - ZZ C3
Bearing NDE				6206 - ZZ C3

WI	Change	date	sign.
Dutchi Motors B.V. P.O. Box 5390 NL-6802 EJ ARNHEM Tel : +31-(0)26 - 3541 600 Fax : +31-(0)26 - 3541 650		Discription Drawing made by :	date 19-04-04 sign. HVD
		dutchi.motors@dutchi.nl www.dutchi.com	

Power is our commodity, the world is our market !



Specification **IEC 60034-1**
 Manufacturer **Dutchi Motors B.V.**
 Motor type **DM1- 100 LY4**
 Rated power **4** kW **S1** duty
 Speed **1400** r.p.m
 Voltage **400 / 690** V
 Frequency **50** Hz
 Connection **Δ / Y**
 Amps full load **8,31 / 4,80** A
 Amps no-load(400V) **3,80** A
 Enclosure **IP 55**
 Insulation Class **F (temp. rise B (80 K))**

Max. coolant temp. **40°C**
 Max. altitude **1.000** mtr, above sea level
 Comment **3 x PTC 150°C**
 Cable entries **2 x M25x1,5 + 1 x M20x1,5 (ptc)**

Feature **Cast-iron motor**
 Weight **42,0** kg
 Catalog no. **11334400DV**
 Warranty **12~18 months**

Efficiency class **N/A**
 Load data 100% 75% 50% 25%
 Efficiency **80,8 82,5 82,1 74,8** %
 Power factor **0,86 0,81 0,71 0,48**

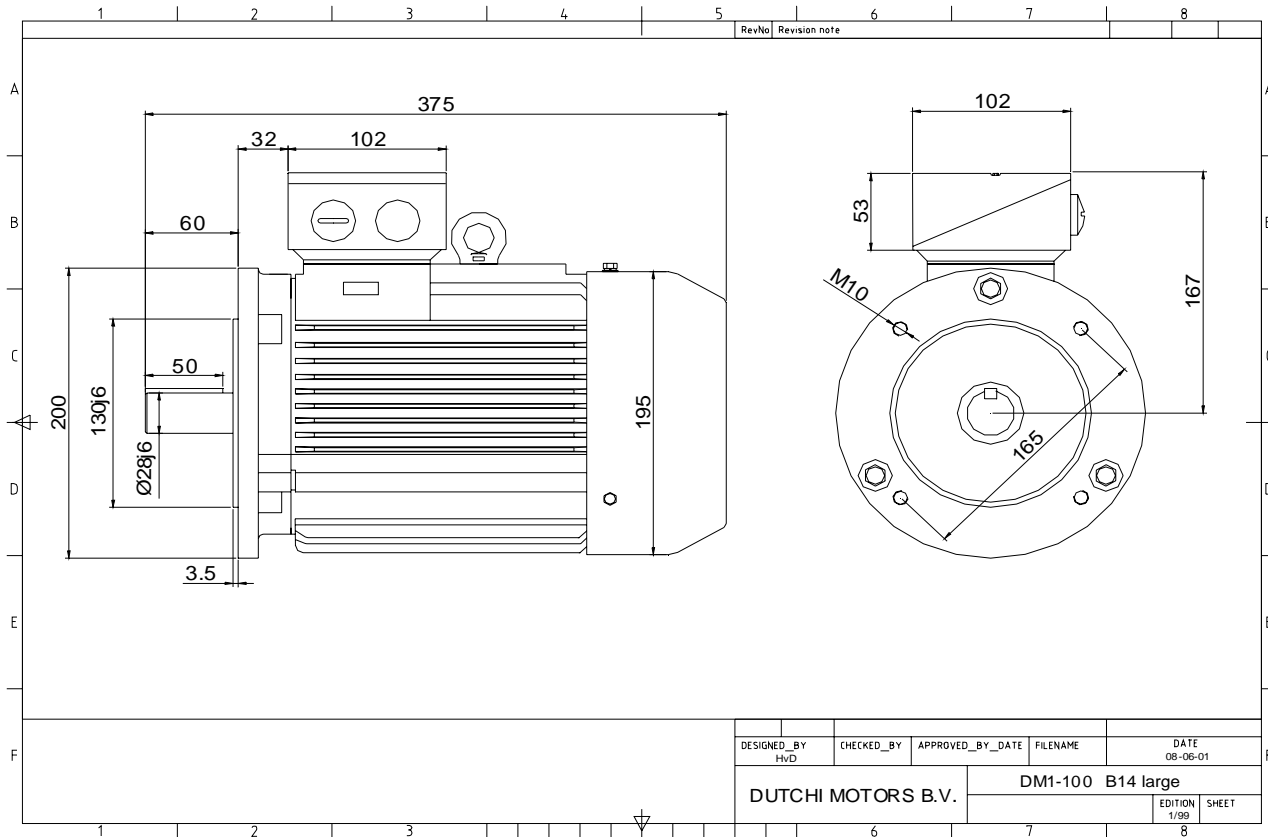
Sound pressure level (1m) **51,8** dB(A)
 Resistance R20 (open) **4,33** Ω
 Resistance R20 **Δ 2,89** Ω

Full load torque **27,29** Nm
 DOL Starting torque vs FL torque **2,60**
 DOL Pull up torque vs FL torque **1,57**
 DOL Pull out torque vs FL torque **2,78**
 Star-Delta Starting torque vs FL torque **0,81**
 Star-Delta Pull up torque vs FL torque **0,49**
 Star-Delta Pull out torque vs FL torque **0,87**
 DOL Starting current vs FL current **6,27**
 Star Delta Starting current vs FL current **1,96**
 Rotor Inertia **0,0067** kgm2

Bearing DE **6206 - ZZ C3**
 Bearing NDE **6206 - ZZ C3**

WI	Change	date	sign.
Dutchi Motors B.V.		Description	date
P.O. Box 5390		Drawing made by :	19-04-04
NL-6802 EJ ARNHEM			
Tel : +31-(0)26 - 3541 600		dutchi.motors@dutchi.nl	
Fax : +31-(0)26 - 3541 650		www.dutchi.com	

Power is our commodity, the world is our market !



Specification	IEC 60034-1
Manufacturer	Dutchi Motors B.V.
Motor type	DM1- 100 LY4
Rated power	4 kW S1 duty
Speed	1400 r.p.m
Voltage	400 / 690 V
Frequency	50 Hz
Connection	Δ / Y
Amps full load	8,31 / 4,80 A
Amps no-load(400V)	3,80 A
Enclosure	IP 55
Insulation Class	F (temp. rise B (80 K))
Max. coolant temp.	40°C
Max. altitude	1.000 mtr, above sea level
Comment	3 x PTC 150°C
Cable entries	2 x M25x1,5 + 1 x M20x1,5 (ptc)
Feature	Cast-iron motor
Weight	42,0 kg
Catalog no.	11434400DV
Warranty	12~18 months

Efficiency class	N/A			
Load data	100%	75%	50%	25%
Efficiency	80,8	82,5	82,1	74,8 %
Power factor	0,86	0,81	0,71	0,48
Sound pressure level (1m)				51,8 dB(A)
Resistance R20 (open)				4,33 Ω
Resistance R20	Δ			2,89 Ω
Full load torque				27,29 Nm
DOL Starting torque vs FL torque				2,60
DOL Pull up torque vs FL torque				1,57
DOL Pull out torque vs FL torque				2,78
Star-Delta Starting torque vs FL torque				0,81
Star-Delta Pull up torque vs FL torque				0,49
Star-Delta Pull out torque vs FL torque				0,87
DOL Starting current vs FL current				6,27
Star Delta Starting current vs FL current				1,96
Rotor Inertia				0,0067 kgm ²
Bearing DE				6206 - ZZ C3
Bearing NDE				6206 - ZZ C3

WI	Change	date	sign.
Dutchi Motors B.V. P.O. Box 5390 NL-6802 EJ ARNHEM Tel : +31-(0)26 - 3541 600 Fax : +31-(0)26 - 3541 650		Discription Drawing made by :	date sign. HVD
dutchi.motors@dutchi.nl www.dutchi.com		19-04-04	