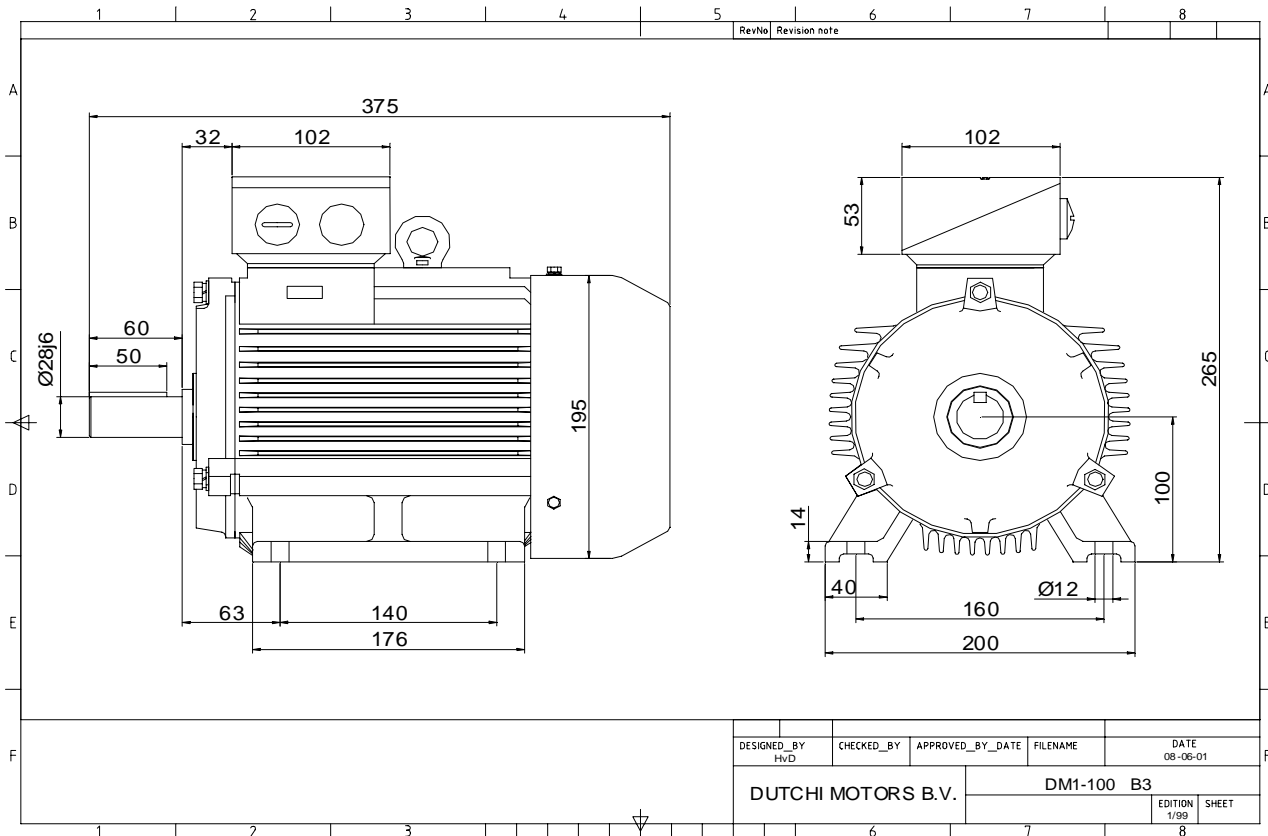


Power is our commodity, the world is our market !



Specification **IEC 60034-1**
 Manufacturer **Dutchi Motors B.V.**
 Motor type **DM1-HE 100LX4**
 Rated power **3,00** kW **S1** duty
 Speed **1435** r.p.m
 Voltage **230** / **400** V
 Frequency **50** Hz
 Connection **Δ** / **Y**
 Amps full load **10,56** / **6,10** A
 Amps no-load(400V) **2,52** A
 Enclosure **IP 55**
 Insulation Class **F (temp. rise B (80 K))**

Max. coolant temp. **40°C**
 Max. altitude **1.000** mtr, above sea level
 Comment **3 x PTC 150°C**
 Cable entries **2 x M25x1,5 + 1 x M20x1,5 (ptc)**

Feature **Cast-iron motor**
 Weight **kg**
 Catalog no.
 Warranty **12~18 months**

Efficiency class **EFF 1**
 Load data 100% 75% 50% 25%
 Efficiency **87,4 87,7 86,9 81,5** %
 Power factor **0,81 0,76 0,68 0,52**

Sound pressure level (1m) **52,9** dB(A)
 Resistance R20 (open) **1,37** Ω
 Resistance R20 **Y 2,73** Ω

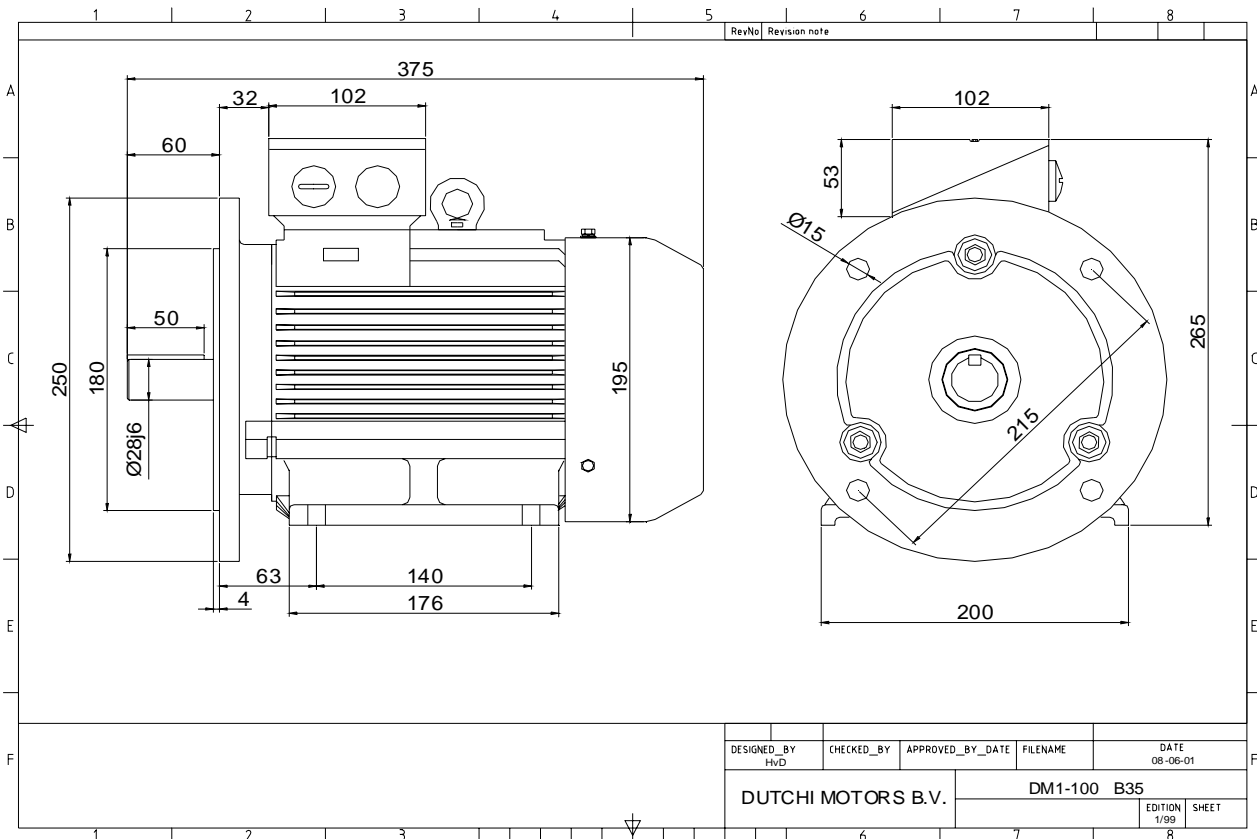
Full load torque **19,97** Nm
 DOL Starting torque vs FL torque **2,19**
 DOL Pull up torque vs FL torque **1,53**
 DOL Pull out torque vs FL torque **2,75**
 Star-Delta Starting torque vs FL torque **Y - motor**
 Star-Delta Pull up torque vs FL torque **Y - motor**
 Star-Delta Pull out torque vs FL torque **Y - motor**
 DOL Starting current vs FL current **6,19**
 Star Delta Starting current vs FL current **Y - motor**
 Rotor Inertia **kgm2**

Bearing DE **6206 - ZZ C3**
 Bearing NDE **6206 - ZZ C3**

voorbeelden - extra's

WI	Change	date	sign.
Dutchi Motors B.V. P.O. Box 5390 NL-6802 EJ ARNHEM Tel : +31-(0)26 - 3541 600 Fax : +31-(0)26 - 3541 650		Discription Drawing made by : 19-04-04	date sign. HvD
dutchi.motors@dutchi.nl www.dutchi.com			

Power is our commodity, the world is our market !



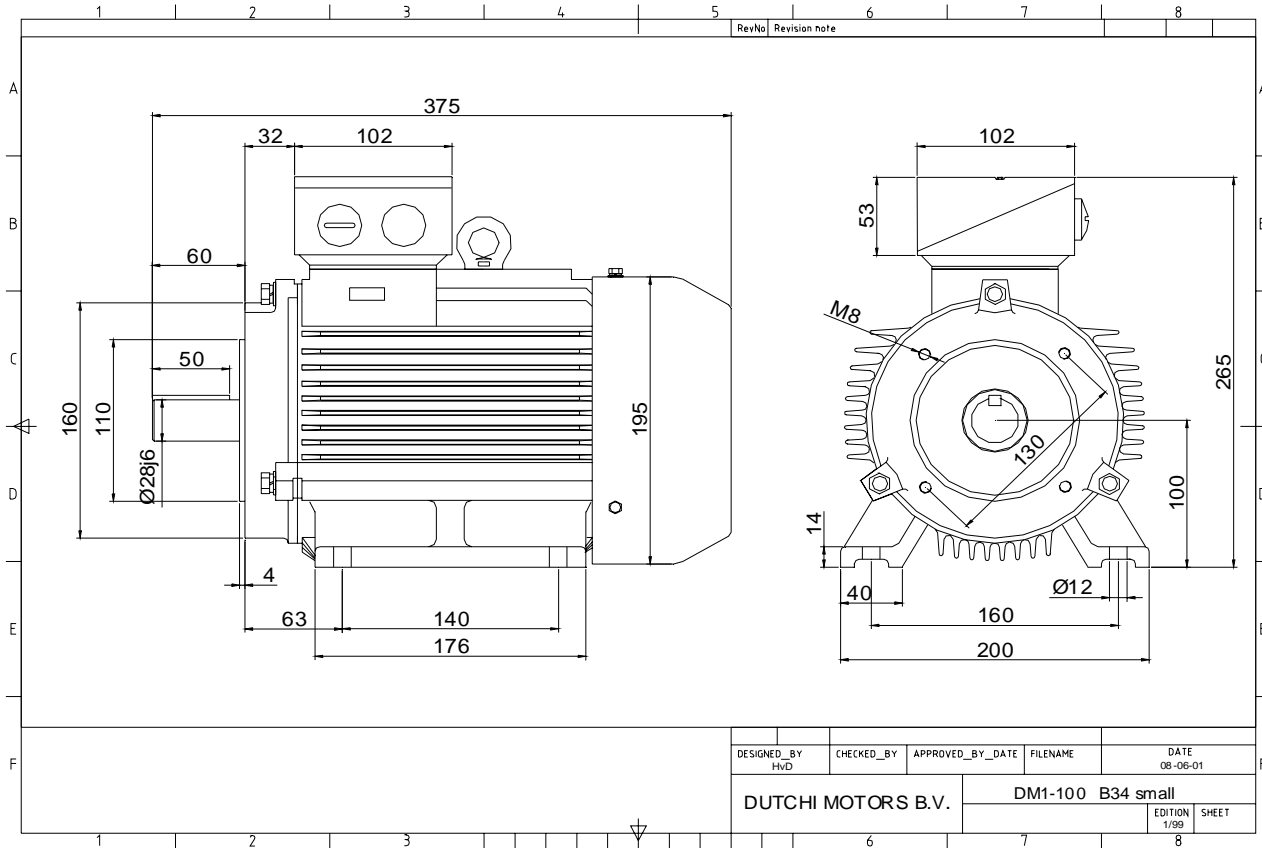
Specification	IEC 60034-1
Manufacturer	Dutchi Motors B.V.
Motor type	DM1-HE 100LX4
Rated power	3,00 kW S1 duty
Speed	1435 r.p.m
Voltage	230 / 400 V
Frequency	50 Hz
Connection	Δ / Y
Amps full load	10,56 / 6,10 A
Amps no-load(400V)	2,52 A
Enclosure	IP 55
Insulation Class	F (temp. rise B (80 K))
Max. coolant temp.	40°C
Max. altitude	1.000 mtr, above sea level
Comment	3 x PTC 150°C
Cable entries	2 x M25x1,5 + 1 x M20x1,5 (ptc)
Feature	Cast-iron motor
Weight	kg
Catalog no.	
Warranty	12~18 months

Efficiency class	EFF 1			
Load data	100%	75%	50%	25%
Efficiency	87,4	87,7	86,9	81,5 %
Power factor	0,81	0,76	0,68	0,52
Sound pressure level (1m)				52,9 dB(A)
Resistance R20 (open)				1,37 Ω
Resistance R20	Y		2,73	Ω
Full load torque				19,97 Nm
DOL Starting torque vs FL torque				2,19
DOL Pull up torque vs FL torque				1,53
DOL Pull out torque vs FL torque				2,75
Star-Delta Starting torque vs FL torque				Y - motor
Star-Delta Pull up torque vs FL torque				Y - motor
Star-Delta Pull out torque vs FL torque				Y - motor
DOL Starting current vs FL current				6,19
Star Delta Starting current vs FL current				Y - motor
Rotor Inertia				kgm ²
Bearing DE				6206 - ZZ C3
Bearing NDE				6206 - ZZ C3

voorbeelden - extra's

WI	Change	date	sign.
Dutchi Motors B.V. P.O. Box 5390 NL-6802 EJ ARNHEM Tel : +31-(0)26 - 3541 600 Fax : +31-(0)26 - 3541 650		Discription Drawing made by :	date 19-04-04 sign. HvD
		dutchi.motors@dutchi.nl www.dutchi.com	

Power is our commodity, the world is our market !



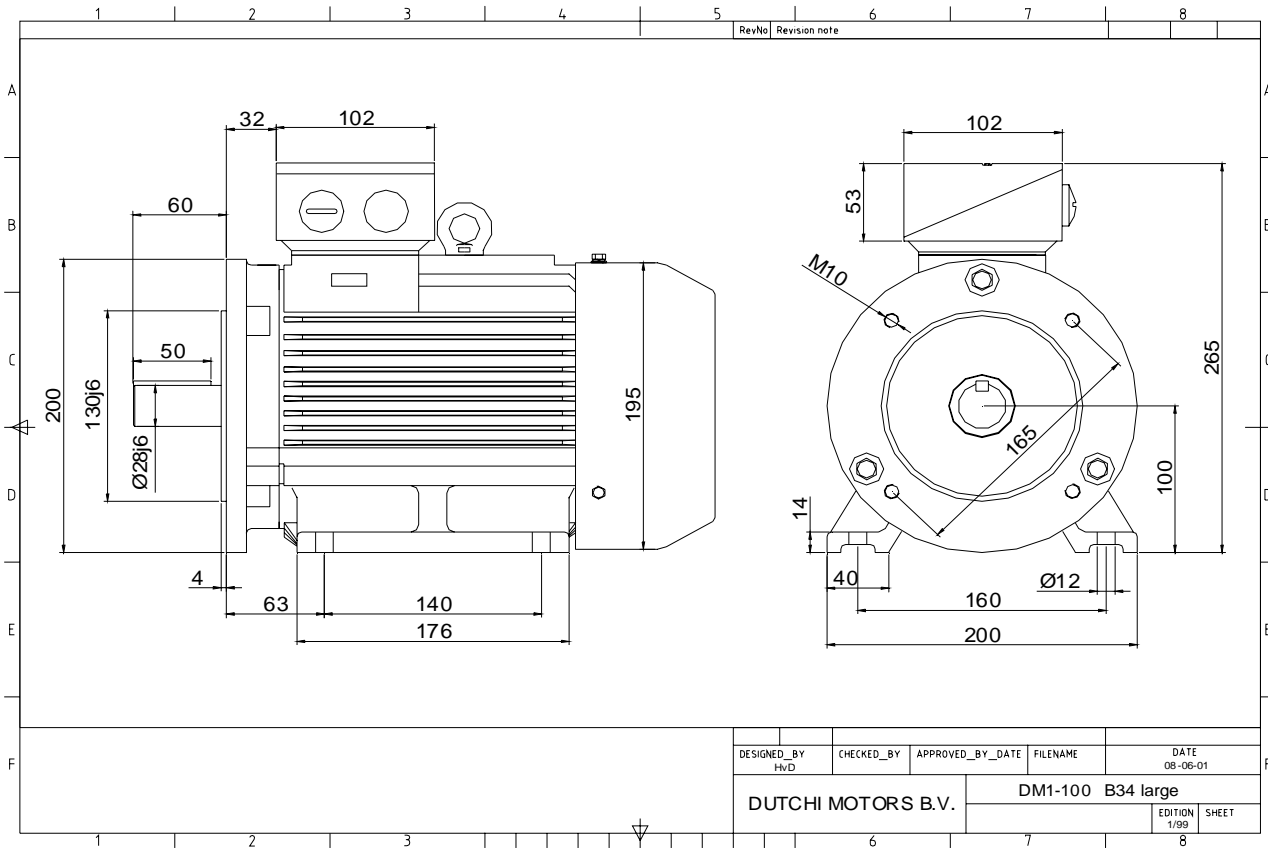
Specification	IEC 60034-1
Manufacturer	Dutchi Motors B.V.
Motor type	DM1-HE 100LX4
Rated power	3,00 kW S1 duty
Speed	1435 r.p.m
Voltage	230 / 400 V
Frequency	50 Hz
Connection	Δ / Y
Amps full load	10,56 / 6,10 A
Amps no-load(400V)	2,52 A
Enclosure	IP 55
Insulation Class	F (temp. rise B (80 K))
Max. coolant temp.	40°C
Max. altitude	1.000 mtr, above sea level
Comment	3 x PTC 150°C
Cable entries	2 x M25x1,5 + 1 x M20x1,5 (ptc)
Feature	Cast-iron motor
Weight	kg
Catalog no.	
Warranty	12~18 months

Efficiency class	EFF 1			
Load data	100%	75%	50%	25%
Efficiency	87,4	87,7	86,9	81,5 %
Power factor	0,81	0,76	0,68	0,52
Sound pressure level (1m)				52,9 dB(A)
Resistance R20 (open)				1,37 Ω
Resistance R20	Y		2,73	Ω
Full load torque				19,97 Nm
DOL Starting torque vs FL torque				2,19
DOL Pull up torque vs FL torque				1,53
DOL Pull out torque vs FL torque				2,75
Star-Delta Starting torque vs FL torque				Y - motor
Star-Delta Pull up torque vs FL torque				Y - motor
Star-Delta Pull out torque vs FL torque				Y - motor
DOL Starting current vs FL current				6,19
Star Delta Starting current vs FL current				Y - motor
Rotor Inertia				kgm ²
Bearing DE				6206 - ZZ C3
Bearing NDE				6206 - ZZ C3

voorbeelden - extra's

WI	Change	date	sign.
Dutchi Motors B.V. P.O. Box 5390 NL-6802 EJ ARNHEM Tel : +31-(0)26 - 3541 600 Fax : +31-(0)26 - 3541 650		Description	date
		Drawing made by :	19-04-04
		dutchi.motors@dutchi.nl www.dutchi.com	

Power is our commodity, the world is our market !



DESIGNED_BY HVD	CHECKED_BY	APPROVED_BY_DATE	FILENAME	DATE 08-06-01
DUTCHI MOTORS B.V.			DM1-100 B34 large	
		EDITION 1/99	SHEET	

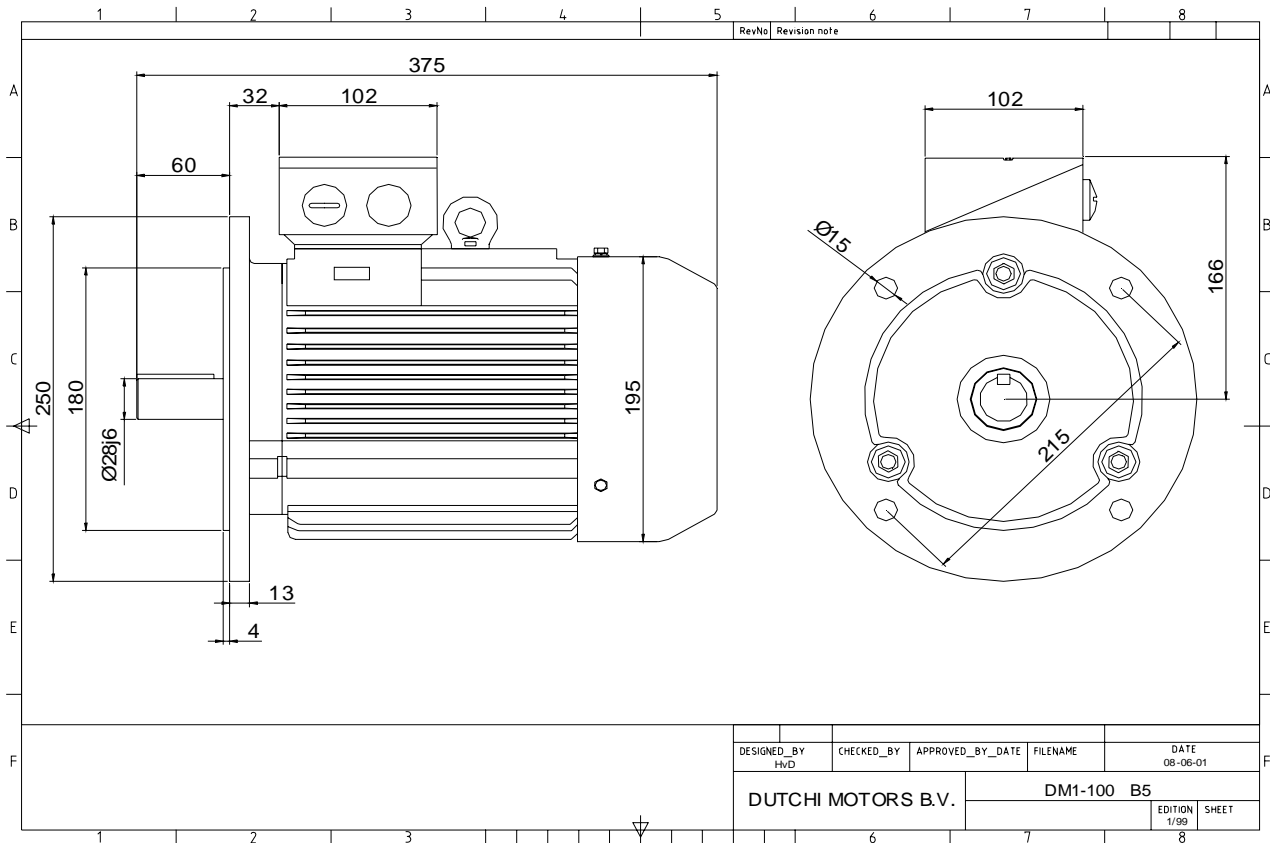
Specification	IEC 60034-1
Manufacturer	Dutchi Motors B.V.
Motor type	DM1-HE 100LX4
Rated power	3,00 kW S1 duty
Speed	1435 r.p.m
Voltage	230 / 400 V
Frequency	50 Hz
Connection	Δ / Y
Amps full load	10,56 / 6,10 A
Amps no-load(400V)	2,52 A
Enclosure	IP 55
Insulation Class	F (temp. rise B (80 K))
Max. coolant temp.	40°C
Max. altitude	1.000 mtr, above sea level
Comment	3 x PTC 150°C
Cable entries	2 x M25x1,5 + 1 x M20x1,5 (ptc)
Feature	Cast-iron motor
Weight	kg
Catalog no.	
Warranty	12~18 months

Efficiency class	EFF 1			
Load data	100%	75%	50%	25%
Efficiency	87,4	87,7	86,9	81,5 %
Power factor	0,81	0,76	0,68	0,52
Sound pressure level (1m)				52,9 dB(A)
Resistance R20 (open)				1,37 Ω
Resistance R20	Y		2,73	Ω
Full load torque				19,97 Nm
DOL Starting torque vs FL torque				2,19
DOL Pull up torque vs FL torque				1,53
DOL Pull out torque vs FL torque				2,75
Star-Delta Starting torque vs FL torque				Y - motor
Star-Delta Pull up torque vs FL torque				Y - motor
Star-Delta Pull out torque vs FL torque				Y - motor
DOL Starting current vs FL current				6,19
Star Delta Starting current vs FL current				Y - motor
Rotor Inertia				kgm ²
Bearing DE				6206 - ZZ C3
Bearing NDE				6206 - ZZ C3

voorbeelden - extra's

WI	Change	date	sign.
Dutchi Motors B.V. P.O. Box 5390 NL-6802 EJ ARNHEM Tel : +31-(0)26 - 3541 600 Fax : +31-(0)26 - 3541 650		Discription Drawing made by :	date 19-04-04
dutchi.motors@dutchi.nl www.dutchi.com		sign. HVD	

Power is our commodity, the world is our market !



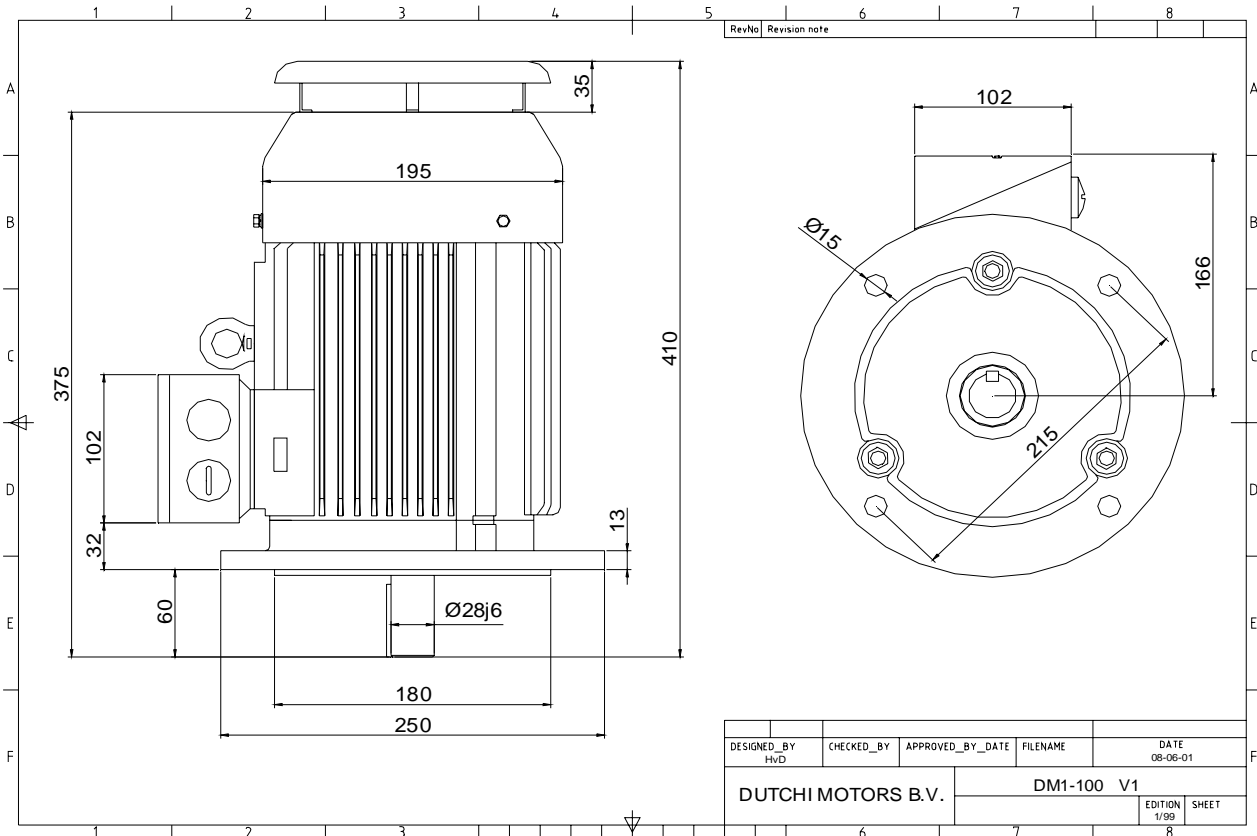
Specification	IEC 60034-1
Manufacturer	Dutchi Motors B.V.
Motor type	DM1-HE 100LX4
Rated power	3,00 kW S1 duty
Speed	1435 r.p.m
Voltage	230 / 400 V
Frequency	50 Hz
Connection	Δ / Y
Amps full load	10,56 / 6,10 A
Amps no-load(400V)	2,52 A
Enclosure	IP 55
Insulation Class	F (temp. rise B (80 K))
Max. coolant temp.	40°C
Max. altitude	1.000 mtr, above sea level
Comment	3 x PTC 150°C
Cable entries	2 x M25x1,5 + 1 x M20x1,5 (ptc)
Feature	Cast-iron motor
Weight	kg
Catalog no.	
Warranty	12~18 months

Efficiency class	EFF 1			
Load data	100%	75%	50%	25%
Efficiency	87,4	87,7	86,9	81,5 %
Power factor	0,81	0,76	0,68	0,52
Sound pressure level (1m)				52,9 dB(A)
Resistance R20 (open)				1,37 Ω
Resistance R20	Y		2,73	Ω
Full load torque				19,97 Nm
DOL Starting torque vs FL torque				2,19
DOL Pull up torque vs FL torque				1,53
DOL Pull out torque vs FL torque				2,75
Star-Delta Starting torque vs FL torque				Y - motor
Star-Delta Pull up torque vs FL torque				Y - motor
Star-Delta Pull out torque vs FL torque				Y - motor
DOL Starting current vs FL current				6,19
Star Delta Starting current vs FL current				Y - motor
Rotor Inertia				kgm ²
Bearing DE				6206 - ZZ C3
Bearing NDE				6206 - ZZ C3

voorbeelden - extra's

WI	Change	date	sign.
Dutchi Motors B.V. P.O. Box 5390 NL-6802 EJ ARNHEM Tel : +31-(0)26 - 3541 600 Fax : +31-(0)26 - 3541 650		Description	date
		Drawing made by :	19-04-04
		dutchi.motors@dutchi.nl www.dutchi.com	

Power is our commodity, the world is our market !



DESIGNED_BY HVD	CHECKED_BY	APPROVED_BY_DATE	FILENAME	DATE 08-06-01
DUTCHI MOTORS B.V.			DM1-100 V1	EDITION 1/99
				SHEET

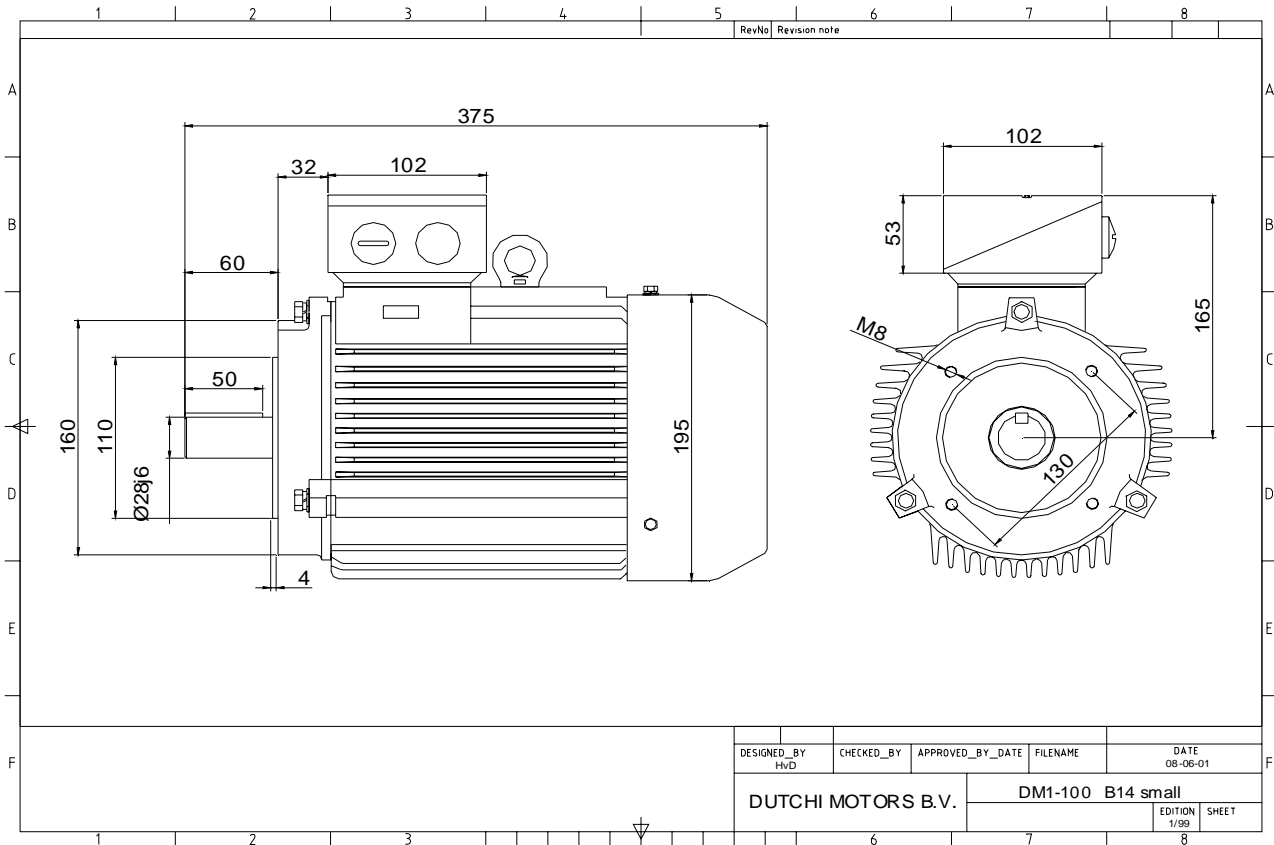
Specification	IEC 60034-1
Manufacturer	Dutchi Motors B.V.
Motor type	DM1-HE 100LX4
Rated power	3,00 kW S1 duty
Speed	1435 r.p.m
Voltage	230 / 400 V
Frequency	50 Hz
Connection	Δ / Y
Amps full load	10,56 / 6,10 A
Amps no-load(400V)	2,52 A
Enclosure	IP 55
Insulation Class	F (temp. rise B (80 K))
Max. coolant temp.	40°C
Max. altitude	1.000 mtr, above sea level
Comment	3 x PTC 150°C
Cable entries	2 x M25x1,5 + 1 x M20x1,5 (ptc)
Feature	Cast-iron motor
Weight	kg
Catalog no.	
Warranty	12~18 months

Efficiency class	EFF 1			
Load data	100%	75%	50%	25%
Efficiency	87,4	87,7	86,9	81,5 %
Power factor	0,81	0,76	0,68	0,52
Sound pressure level (1m)				52,9 dB(A)
Resistance R20 (open)				1,37 Ω
Resistance R20	Y		2,73	Ω
Full load torque				19,97 Nm
DOL Starting torque vs FL torque				2,19
DOL Pull up torque vs FL torque				1,53
DOL Pull out torque vs FL torque				2,75
Star-Delta Starting torque vs FL torque				Y - motor
Star-Delta Pull up torque vs FL torque				Y - motor
Star-Delta Pull out torque vs FL torque				Y - motor
DOL Starting current vs FL current				6,19
Star Delta Starting current vs FL current				Y - motor
Rotor Inertia				kgm ²
Bearing DE				6206 - ZZ C3
Bearing NDE				6206 - ZZ C3

voorbeelden - extra's

WI	Change	date	sign.
Dutchi Motors B.V.		Description	date
P.O. Box 5390		Drawing made by :	19-04-04
NL-6802 EJ ARNHEM			
Tel : +31-(0)26 - 3541 600		dutchi.motors@dutchi.nl	
Fax : +31-(0)26 - 3541 650		www.dutchi.com	

Power is our commodity, the world is our market !



Specification **IEC 60034-1**
 Manufacturer **Dutchi Motors B.V.**
 Motor type **DM1-HE 100LX4**
 Rated power **3,00** kW **S1** duty
 Speed **1435** r.p.m
 Voltage **230 / 400** V
 Frequency **50** Hz
 Connection **Δ / Y**
 Amps full load **10,56 / 6,10** A
 Amps no-load(400V) **2,52** A
 Enclosure **IP 55**
 Insulation Class **F (temp. rise B (80 K))**

Max. coolant temp. **40°C**
 Max. altitude **1.000** mtr, above sea level
 Comment **3 x PTC 150°C**
 Cable entries **2 x M25x1,5 + 1 x M20x1,5 (ptc)**

Feature **Cast-iron motor**
 Weight **kg**
 Catalog no.
 Warranty **12~18 months**

Efficiency class **EFF 1**
 Load data 100% 75% 50% 25%
 Efficiency **87,4 87,7 86,9 81,5** %
 Power factor **0,81 0,76 0,68 0,52**

Sound pressure level (1m) **52,9** dB(A)
 Resistance R20 (open) **1,37** Ω
 Resistance R20 **Y 2,73** Ω

Full load torque **19,97** Nm
 DOL Starting torque vs FL torque **2,19**
 DOL Pull up torque vs FL torque **1,53**
 DOL Pull out torque vs FL torque **2,75**
 Star-Delta Starting torque vs FL torque **Y - motor**
 Star-Delta Pull up torque vs FL torque **Y - motor**
 Star-Delta Pull out torque vs FL torque **Y - motor**
 DOL Starting current vs FL current **6,19**
 Star Delta Starting current vs FL current **Y - motor**

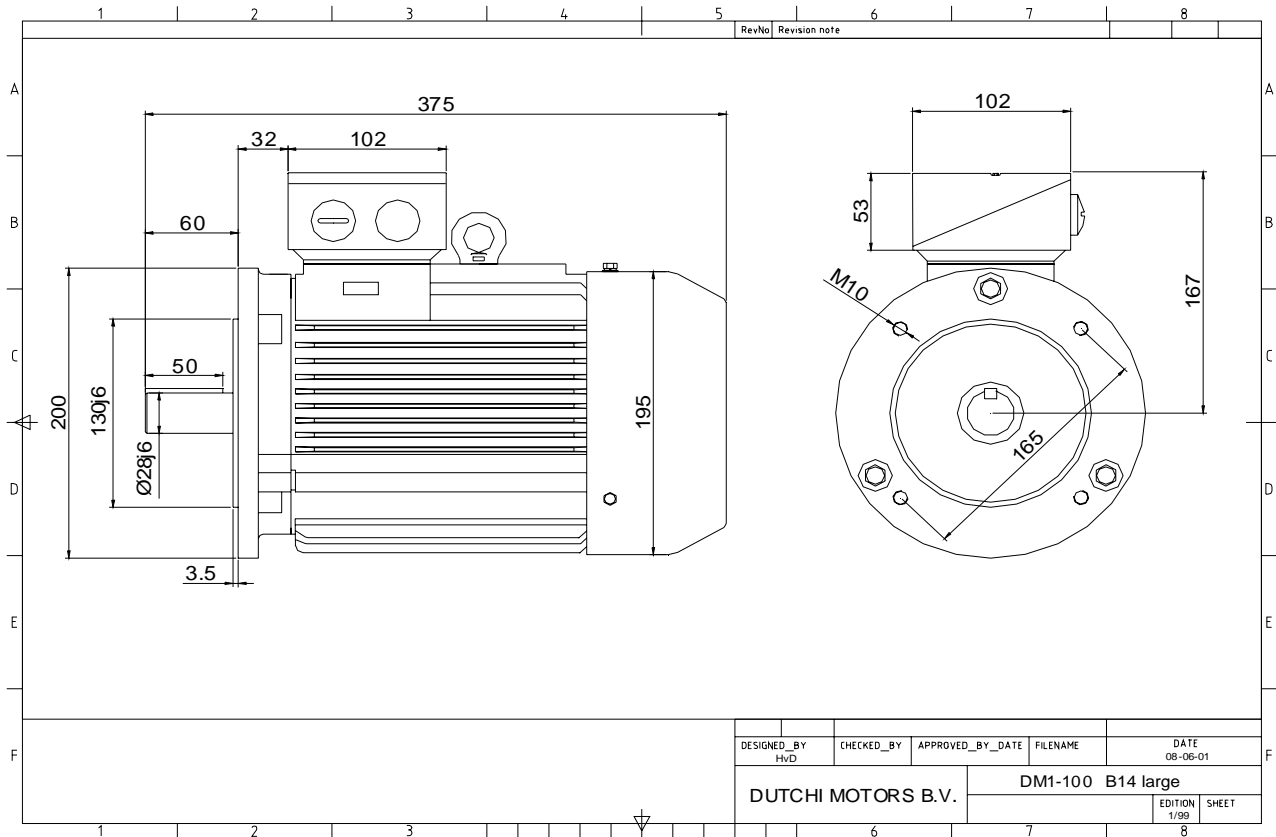
Rotor Inertia **kgm2**

Bearing DE **6206 - ZZ C3**
 Bearing NDE **6206 - ZZ C3**

voorbeelden - extra's

WI	Change	date	sign.
Dutchi Motors B.V. P.O. Box 5390 NL-6802 EJ ARNHEM Tel : +31-(0)26 - 3541 600 Fax : +31-(0)26 - 3541 650		Discription	date
		Drawing made by :	19-04-04
		sign.	HvD
		dutchi.motors@dutchi.nl www.dutchi.com	

Power is our commodity, the world is our market !



Specification	IEC 60034-1
Manufacturer	Dutchi Motors B.V.
Motor type	DM1-HE 100LX4
Rated power	3,00 kW S1 duty
Speed	1435 r.p.m
Voltage	230 / 400 V
Frequency	50 Hz
Connection	Δ / Y
Amps full load	10,56 / 6,10 A
Amps no-load(400V)	2,52 A
Enclosure	IP 55
Insulation Class	F (temp. rise B (80 K))
Max. coolant temp.	40°C
Max. altitude	1.000 mtr, above sea level
Comment	3 x PTC 150°C
Cable entries	2 x M25x1,5 + 1 x M20x1,5 (ptc)
Feature	Cast-iron motor
Weight	kg
Catalog no.	
Warranty	12~18 months

Efficiency class	EFF 1			
Load data	100%	75%	50%	25%
Efficiency	87,4	87,7	86,9	81,5 %
Power factor	0,81	0,76	0,68	0,52
Sound pressure level (1m)				52,9 dB(A)
Resistance R20 (open)				1,37 Ω
Resistance R20	Y		2,73	Ω
Full load torque				19,97 Nm
DOL Starting torque vs FL torque				2,19
DOL Pull up torque vs FL torque				1,53
DOL Pull out torque vs FL torque				2,75
Star-Delta Starting torque vs FL torque				Y - motor
Star-Delta Pull up torque vs FL torque				Y - motor
Star-Delta Pull out torque vs FL torque				Y - motor
DOL Starting current vs FL current				6,19
Star Delta Starting current vs FL current				Y - motor
Rotor Inertia				kgm ²
Bearing DE				6206 - ZZ C3
Bearing NDE				6206 - ZZ C3

voorbeelden - extra's

WI	Change	date	sign.
Dutchi Motors B.V.		Description	date
P.O. Box 5390		Drawing made by :	19-04-04
NL-6802 EJ ARNHEM			HvD
Tel : +31-(0)26 - 3541 600		dutchi.motors@dutchi.nl	
Fax : +31-(0)26 - 3541 650		www.dutchi.com	