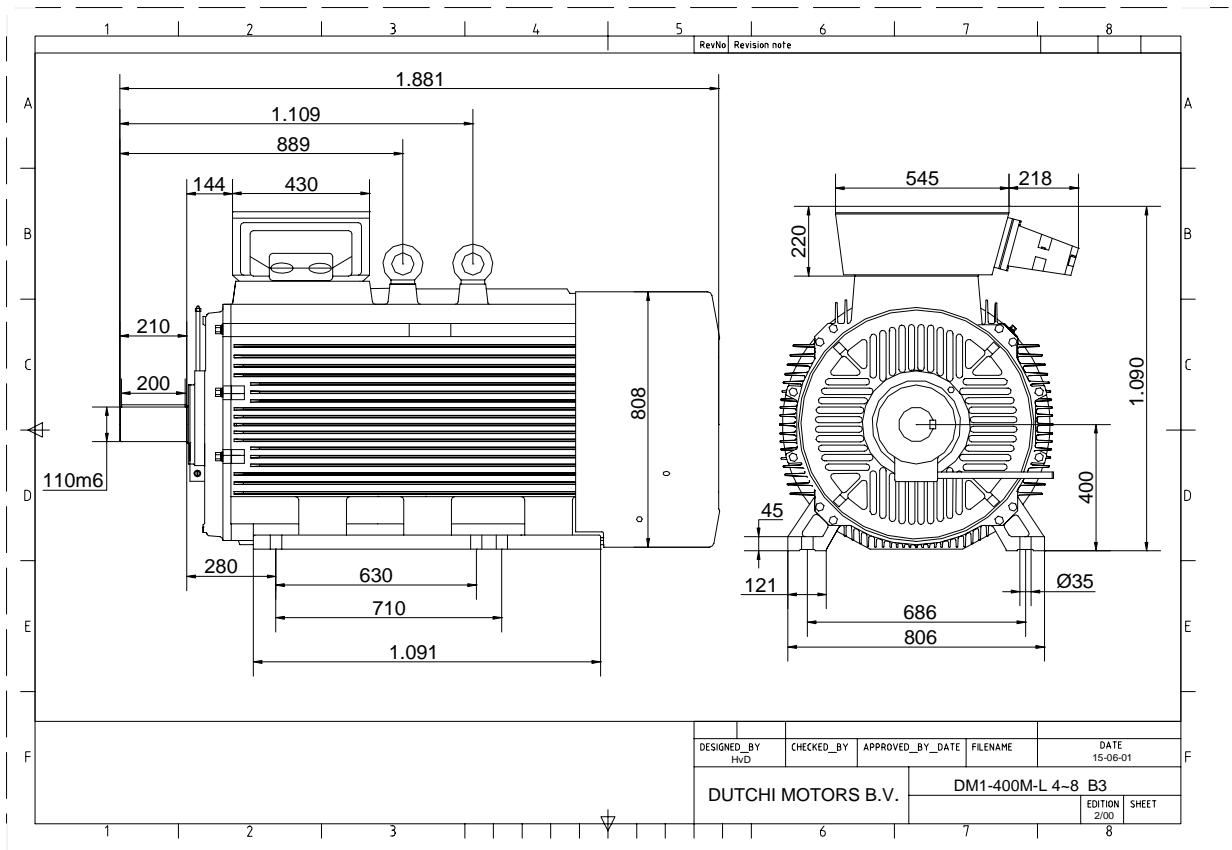


Power is our commodity, the world is our market !



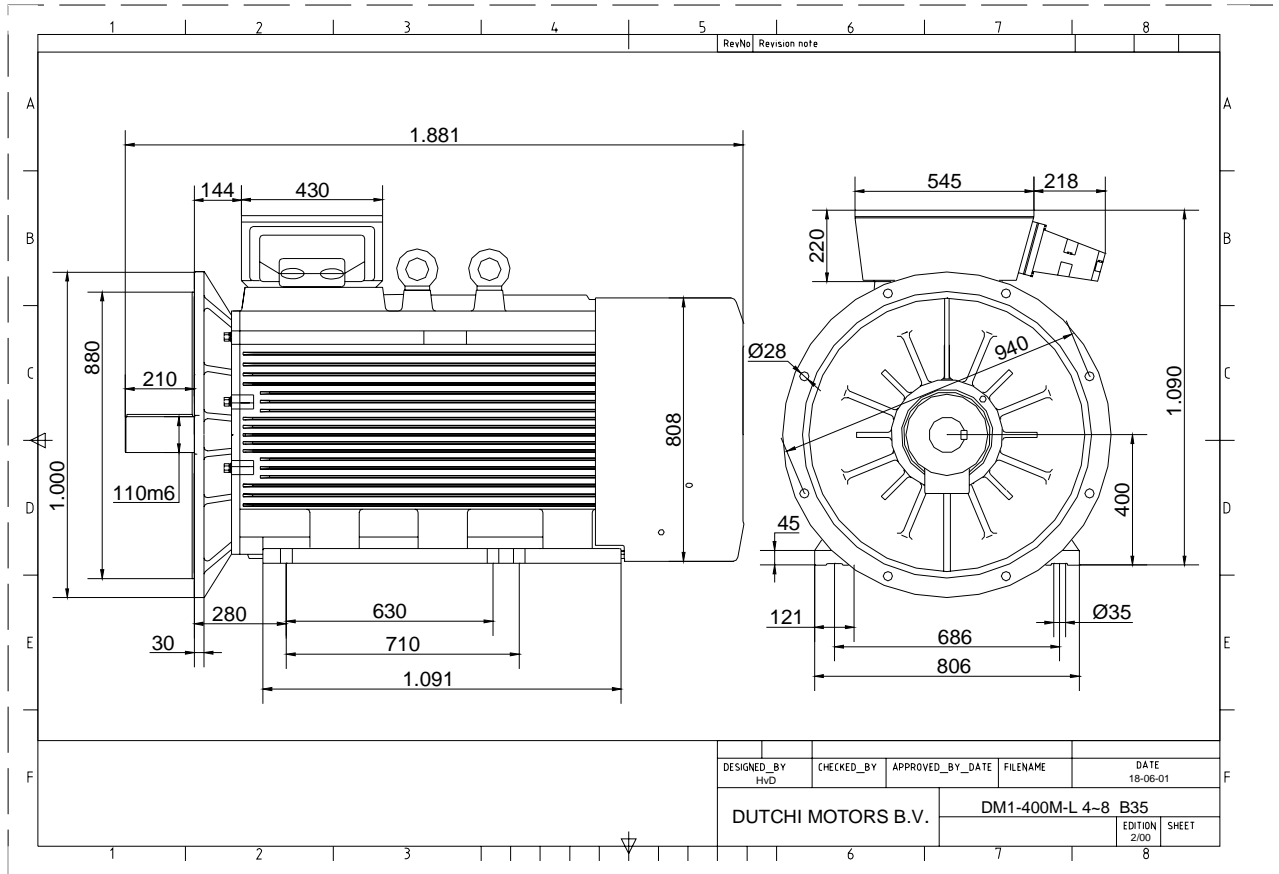
Specification	IEC 60034-1		
Manufacturer	Dutchi Motors B.V.		
Motor type	DM1-	400 MX6	
Rated power	355	kW	S1 duty
Speed	990	r.p.m	
Voltage	400	/	690 V
Frequency	50	Hz	
Connection	Δ	/	Y
Amps full load	606	/	350 A
Amps no-load(400V)	185	A	
Enclosure	IP 55		
Insulation Class	F (temp. rise B (80 K))		
Max. coolant temp.	40°C		
Max. altitude	1.000	mtr,	above sea level
Comment	3 x PTC 150°C		
Cable entries	2 x Ø 100 mm + 1 x M20x1,5 (ptc)		
Feature	Cast-iron motor		
Weight	3580	kg	
Catalog no.	11136D55D		
Warranty	12~18 months		

Efficiency class	N/A				
Load data	100%	75%	50%	25%	
Efficiency	96,2	95,9	94,7	91,0	%
Power factor	0,88	0,85	0,79	0,65	
Sound pressure level (1m)	79,3				dB(A)
Resistance R20 (open)	0,00481				Ω
Resistance R20	0,00320				Ω
Full load torque	3424				Nm
DOL Starting torque vs FL torque	1,19				
DOL Pull up torque vs FL torque	1,19				
DOL Pull out torque vs FL torque	3,38				
Star-Delta Starting torque vs FL torque	0,37				
Star-Delta Pull up torque vs FL torque	0,37				
Star-Delta Pull out torque vs FL torque	1,06				
DOL Starting current vs FL current	6,60				
Star Delta Starting current vs FL current	2,06				
Rotor Inertia	19,05				kgm ²
Bearing DE	6326 - C3 or NU326				
Bearing NDE	6326 - C3 (IM V1 7326B)				

Extras / Options :
Terminal box with extra 7 x M63x1,5

WI	Change	date	sign.
Dutchi Motors B.V.		Discription	date
P.O. Box 5390		Drawing made by :	19-04-04
NL-6802 EJ ARNHEM			
Tel : +31-(0)26 - 3541 600		dutchi.motors@dutchi.nl	
Fax : +31-(0)26 - 3541 650		www.dutchi.com	

Power is our commodity, the world is our market !



DESIGNED_BY HvD	CHECKED_BY	APPROVED_BY_DATE	FILENAME	DATE 18-06-01
DUTCHI MOTORS B.V.			DM1-400M-L 4-8 B35	EDITION 2/00 SHEET

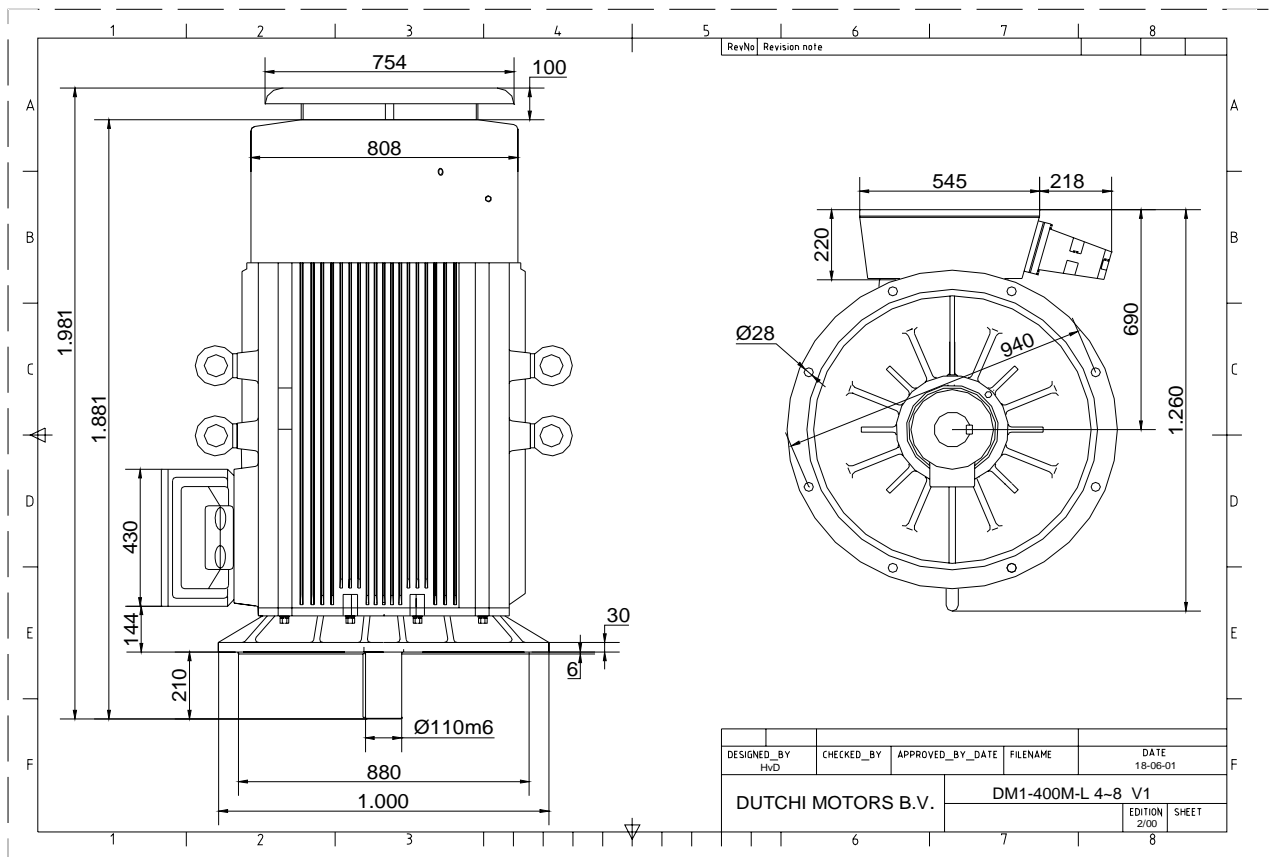
Specification	IEC 60034-1
Manufacturer	Dutchi Motors B.V.
Motor type	DM1- 400 MX6
Rated power	355 kW S1 duty
Speed	990 r.p.m
Voltage	400 / 690 V
Frequency	50 Hz
Connection	Δ / Y
Amps full load	606 / 350 A
Amps no-load(400V)	185 A
Enclosure	IP 55
Insulation Class	F (temp. rise B (80 K))
Max. coolant temp.	40°C
Max. altitude	1.000 mtr, above sea level
Comment	3 x PTC 150°C
Cable entries	2 x Ø 100 mm + 1 x M20x1,5 (ptc)
Feature	Cast-iron motor
Weight	3580 kg
Catalog no.	11536D55D
Warranty	12~18 months

Efficiency class	N/A			
Load data	100%	75%	50%	25%
Efficiency	96,2	95,9	94,7	91,0 %
Power factor	0,88	0,85	0,79	0,65
Sound pressure level (1m)				79,3 dB(A)
Resistance R20 (open)				0,00481 Ω
Resistance R20	Δ			0,00320 Ω
Full load torque				3424 Nm
DOL Starting torque vs FL torque				1,19
DOL Pull up torque vs FL torque				1,19
DOL Pull out torque vs FL torque				3,38
Star-Delta Starting torque vs FL torque				0,37
Star-Delta Pull up torque vs FL torque				0,37
Star-Delta Pull out torque vs FL torque				1,06
DOL Starting current vs FL current				6,60
Star Delta Starting current vs FL current				2,06
Rotor Inertia				19,05 kgm ²
Bearing DE				6326 - C3 or NU326
Bearing NDE				6326 - C3 (IM V1 7326B)

Extras / Options :
Terminal box with extra 7 x M63x1,5

WI	Change	date	sign.
Dutchi Motors B.V.		Discription	date
P.O. Box 5390		Drawing made by :	19-04-04
NL-6802 EJ ARNHEM			
Tel : +31-(0)26 - 3541 600		dutchi.motors@dutchi.nl	
Fax : +31-(0)26 - 3541 650		www.dutchi.com	

Power is our commodity, the world is our market !



Specification	IEC 60034-1
Manufacturer	Dutchi Motors B.V.
Motor type	DM1- 400 MX6
Rated power	355 kW S1 duty
Speed	990 r.p.m
Voltage	400 / 690 V
Frequency	50 Hz
Connection	Δ / Y
Amps full load	606 / 350 A
Amps no-load(400V)	185 A
Enclosure	IP 55
Insulation Class	F (temp. rise B (80 K))
Max. coolant temp.	40°C
Max. altitude	1.000 mtr, above sea level
Comment	3 x PTC 150°C
Cable entries	2 x Ø 100 mm + 1 x M20x1,5 (ptc)
Feature	Cast-iron motor
Weight	3580 kg
Catalog no.	11036D55D
Warranty	12~18 months

Efficiency class	N/A			
Load data	100%	75%	50%	25%
Efficiency	96,2	95,9	94,7	91,0 %
Power factor	0,88	0,85	0,79	0,65
Sound pressure level (1m)				79,3 dB(A)
Resistance R20 (open)				0,00481 Ω
Resistance R20	Δ			0,00320 Ω
Full load torque				3424 Nm
DOL Starting torque vs FL torque				1,19
DOL Pull up torque vs FL torque				1,19
DOL Pull out torque vs FL torque				3,38
Star-Delta Starting torque vs FL torque				0,37
Star-Delta Pull up torque vs FL torque				0,37
Star-Delta Pull out torque vs FL torque				1,06
DOL Starting current vs FL current				6,60
Star Delta Starting current vs FL current				2,06
Rotor Inertia				19,05 kgm ²
Bearing DE				6326 - C3 or NU326
Bearing NDE				6326 - C3 (IM V1 7326B)

Extras / Options :
Terminal box with extra 7 x M63x1,5

WI	Change	date	sign.
Dutchi Motors B.V. P.O. Box 5390 NL-6802 EJ ARNHEM Tel : +31-(0)26 - 3541 600 Fax : +31-(0)26 - 3541 650		Discription Drawing made by :	date 19-04-04 sign. HvD
dutchi.motors@dutchi.nl www.dutchi.com			