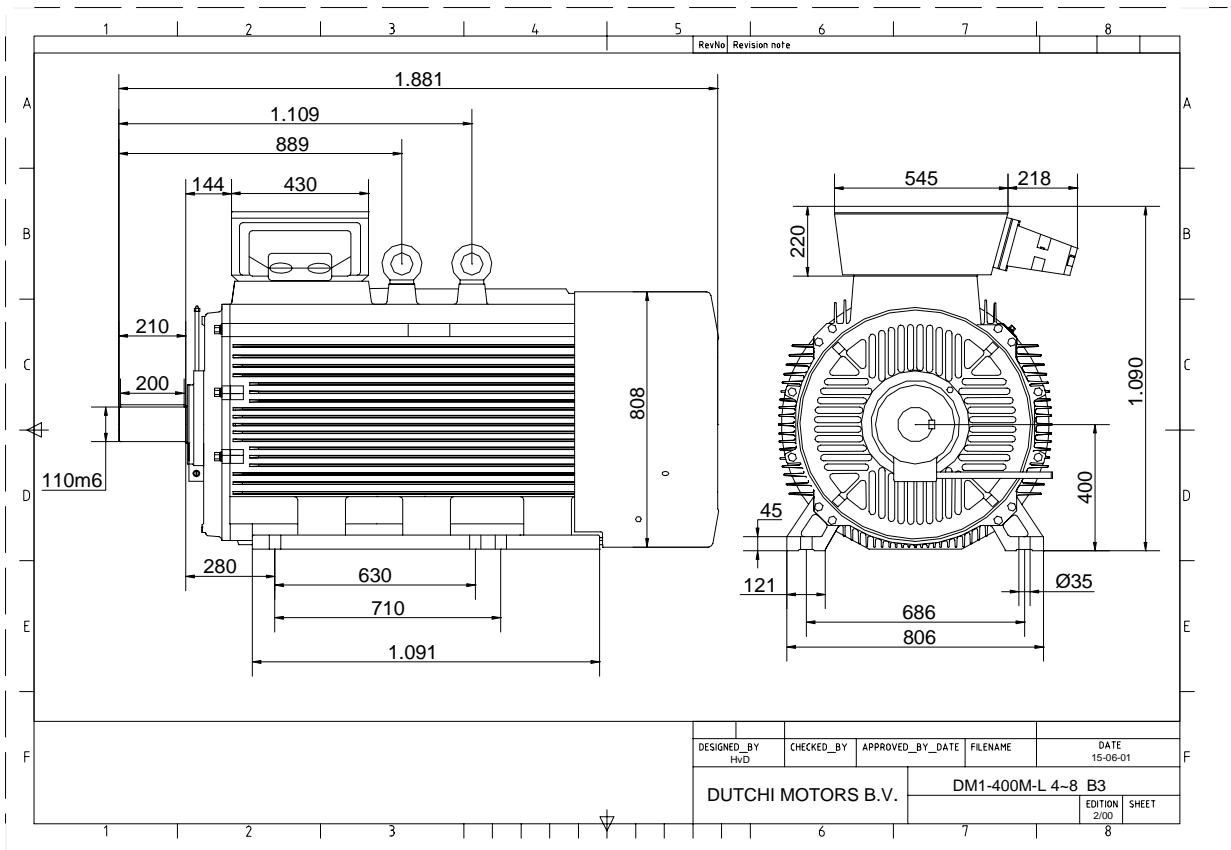


Power is our commodity, the world is our market !



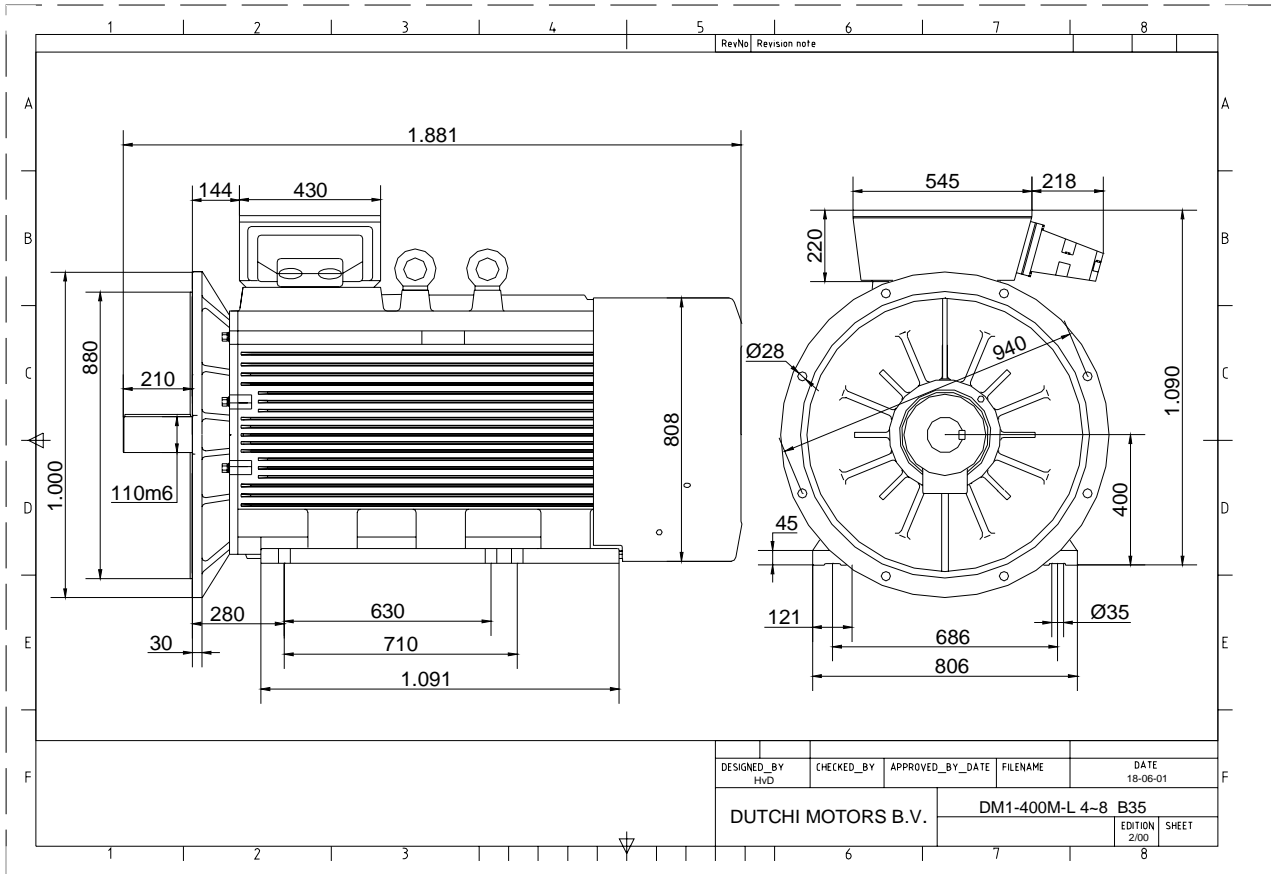
Specification	<b>IEC 60034-1</b>
Manufacturer	<b>Dutchi Motors B.V.</b>
Motor type	<b>DM1- 400 LY6</b>
Rated power	<b>500</b> kW <b>S1</b> duty
Speed	<b>990</b> r.p.m
Voltage	<b>400 / 690</b> V
Frequency	<b>50</b> Hz
Connection	<b>Δ / Y</b>
Amps full load	<b>880 / 508</b> A
Amps no-load(400V)	<b>335</b> A
Enclosure	<b>IP 55</b>
Insulation Class	<b>F temp. rise F</b>
Max. coolant temp.	<b>40°C</b>
Max. altitude	<b>1.000</b> mtr, above sea level
Comment	<b>3 x PTC 150°C</b>
Cable entries	<b>2 x Ø 100 mm + 1 x M20x1,5 (ptc)</b>
Feature	<b>Cast-iron motor</b>
Weight	<b>3970</b> kg
Catalog no.	<b>11136F00D</b>
Warranty	<b>12~18 months</b>

Efficiency class	<b>N/A</b>				
Load data	100%	75%	50%	25%	
Efficiency	<b>95,5</b>	<b>95,0</b>	<b>93,7</b>	<b>89,4</b>	%
Power factor	<b>0,86</b>	<b>0,82</b>	<b>0,73</b>	<b>0,52</b>	
Sound pressure level (1m)	<b>78,0</b>				dB(A)
Resistance R20 (open)	<b>0,00345</b>				Ω
Resistance R20	<b>0,00230</b>				Ω
Full load torque	<b>4823</b>				Nm
DOL Starting torque vs FL torque	<b>1,63</b>				
DOL Pull up torque vs FL torque	<b>1,42</b>				
DOL Pull out torque vs FL torque	<b>3,77</b>				
Star-Delta Starting torque vs FL torque	<b>0,51</b>				
Star-Delta Pull up torque vs FL torque	<b>0,44</b>				
Star-Delta Pull out torque vs FL torque	<b>1,18</b>				
DOL Starting current vs FL current	<b>7,13</b>				
Star Delta Starting current vs FL current	<b>2,23</b>				
Rotor Inertia	<b>23,40</b>				kgm <sup>2</sup>
Bearing DE	<b>6326 - C3 or NU326</b>				
Bearing NDE	<b>6326 - C3 (IM V1 7326B)</b>				

<b>Extras / Options :</b>
<b>Terminal box with extra 7 x M63x1,5</b>

WI	Change	date	sign.
<b>Dutchi Motors B.V.</b> P.O. Box 5390 NL-6802 EJ ARNHEM Tel : +31-(0)26 - 3541 600 Fax : +31-(0)26 - 3541 650		Discription Drawing made by :	date 19-04-04 sign. Hvd
		<b>dutchi.motors@dutchi.nl</b> <b>www.dutchi.com</b>	

Power is our commodity, the world is our market !



DESIGNED_BY HvD	CHECKED_BY	APPROVED_BY_DATE	FILENAME	DATE 18-06-01
DUTCHI MOTORS B.V.			DM1-400M-L 4-8 B35	EDITION 2/00
				SHEET

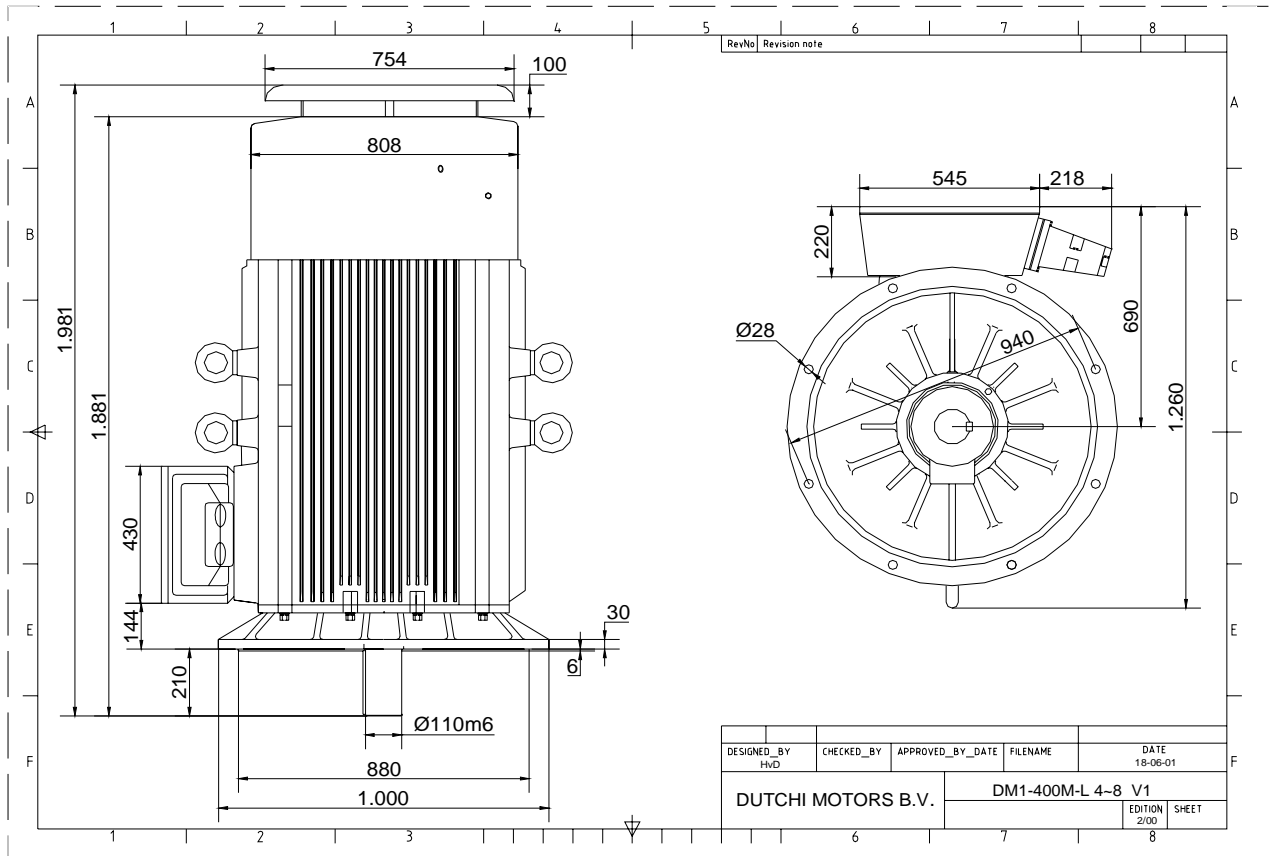
Specification	<b>IEC 60034-1</b>
Manufacturer	<b>Dutchi Motors B.V.</b>
Motor type	<b>DM1- 400 LY6</b>
Rated power	<b>500</b> kW <b>S1</b> duty
Speed	<b>990</b> r.p.m
Voltage	<b>400 / 690</b> V
Frequency	<b>50</b> Hz
Connection	<b>Δ / Y</b>
Amps full load	<b>880 / 508</b> A
Amps no-load(400V)	<b>335</b> A
Enclosure	<b>IP 55</b>
Insulation Class	<b>F temp. rise F</b>
Max. coolant temp.	<b>40°C</b>
Max. altitude	<b>1.000</b> mtr, above sea level
Comment	<b>3 x PTC 150°C</b>
Cable entries	<b>2 x Ø 100 mm + 1 x M20x1,5 (ptc)</b>
Feature	<b>Cast-iron motor</b>
Weight	<b>3970</b> kg
Catalog no.	<b>11536F00D</b>
Warranty	<b>12~18 months</b>

Efficiency class	<b>N/A</b>			
Load data	100%	75%	50%	25%
Efficiency	<b>95,5</b>	<b>95,0</b>	<b>93,7</b>	<b>89,4</b> %
Power factor	<b>0,86</b>	<b>0,82</b>	<b>0,73</b>	<b>0,52</b>
Sound pressure level (1m)				<b>78,0</b> dB(A)
Resistance R20 (open)				<b>0,00345</b> Ω
Resistance R20	<b>Δ</b>			<b>0,00230</b> Ω
Full load torque				<b>4823</b> Nm
DOL Starting torque vs FL torque				<b>1,63</b>
DOL Pull up torque vs FL torque				<b>1,42</b>
DOL Pull out torque vs FL torque				<b>3,77</b>
Star-Delta Starting torque vs FL torque				<b>0,51</b>
Star-Delta Pull up torque vs FL torque				<b>0,44</b>
Star-Delta Pull out torque vs FL torque				<b>1,18</b>
DOL Starting current vs FL current				<b>7,13</b>
Star Delta Starting current vs FL current				<b>2,23</b>
Rotor Inertia				<b>23,40</b> kgm <sup>2</sup>
Bearing DE				<b>6326 - C3 or NU326</b>
Bearing NDE				<b>6326 - C3 (IM V1 7326B)</b>

<b>Extras / Options :</b>
<b>Terminal box with extra 7 x M63x1,5</b>

WI	Change	date	sign.
<b>Dutchi Motors B.V.</b>		Discription	date
P.O. Box 5390		Drawing made by :	19-04-04
NL-6802 EJ ARNHEM			
Tel : +31-(0)26 - 3541 600		<b>dutchi.motors@dutchi.nl</b>	
Fax : +31-(0)26 - 3541 650		<b>www.dutchi.com</b>	

Power is our commodity, the world is our market !



Specification	<b>IEC 60034-1</b>
Manufacturer	<b>Dutchi Motors B.V.</b>
Motor type	<b>DM1- 400 LY6</b>
Rated power	<b>500</b> kW <b>S1</b> duty
Speed	<b>990</b> r.p.m
Voltage	<b>400 / 690</b> V
Frequency	<b>50</b> Hz
Connection	<b>Δ / Y</b>
Amps full load	<b>880 / 508</b> A
Amps no-load(400V)	<b>335</b> A
Enclosure	<b>IP 55</b>
Insulation Class	<b>F temp. rise F</b>
Max. coolant temp.	<b>40°C</b>
Max. altitude	<b>1.000</b> mtr, above sea level
Comment	<b>3 x PTC 150°C</b>
Cable entries	<b>2 x Ø 100 mm + 1 x M20x1,5 (ptc)</b>
Feature	<b>Cast-iron motor</b>
Weight	<b>3970</b> kg
Catalog no.	<b>11036F00D</b>
Warranty	<b>12~18 months</b>

Efficiency class	<b>N/A</b>			
Load data	100%	75%	50%	25%
Efficiency	<b>95,5</b>	<b>95,0</b>	<b>93,7</b>	<b>89,4</b> %
Power factor	<b>0,86</b>	<b>0,82</b>	<b>0,73</b>	<b>0,52</b>
Sound pressure level (1m)				<b>78,0</b> dB(A)
Resistance R20 (open)				<b>0,00345</b> Ω
Resistance R20	<b>Δ</b>			<b>0,00230</b> Ω
Full load torque				<b>4823</b> Nm
DOL Starting torque vs FL torque				<b>1,63</b>
DOL Pull up torque vs FL torque				<b>1,42</b>
DOL Pull out torque vs FL torque				<b>3,77</b>
Star-Delta Starting torque vs FL torque				<b>0,51</b>
Star-Delta Pull up torque vs FL torque				<b>0,44</b>
Star-Delta Pull out torque vs FL torque				<b>1,18</b>
DOL Starting current vs FL current				<b>7,13</b>
Star Delta Starting current vs FL current				<b>2,23</b>
Rotor Inertia				<b>23,40</b> kgm <sup>2</sup>
Bearing DE				<b>6326 - C3 or NU326</b>
Bearing NDE				<b>6326 - C3 (IM V1 7326B)</b>

<b>Extras / Options :</b>
<b>Terminal box with extra 7 x M63x1,5</b>

WI	Change	date	sign.
<b>Dutchi Motors B.V.</b>		Discription	date
P.O. Box 5390		Drawing made by :	19-04-04
NL-6802 EJ ARNHEM			
Tel : +31-(0)26 - 3541 600		<b>dutchi.motors@dutchi.nl</b>	
Fax : +31-(0)26 - 3541 650		<b>www.dutchi.com</b>	