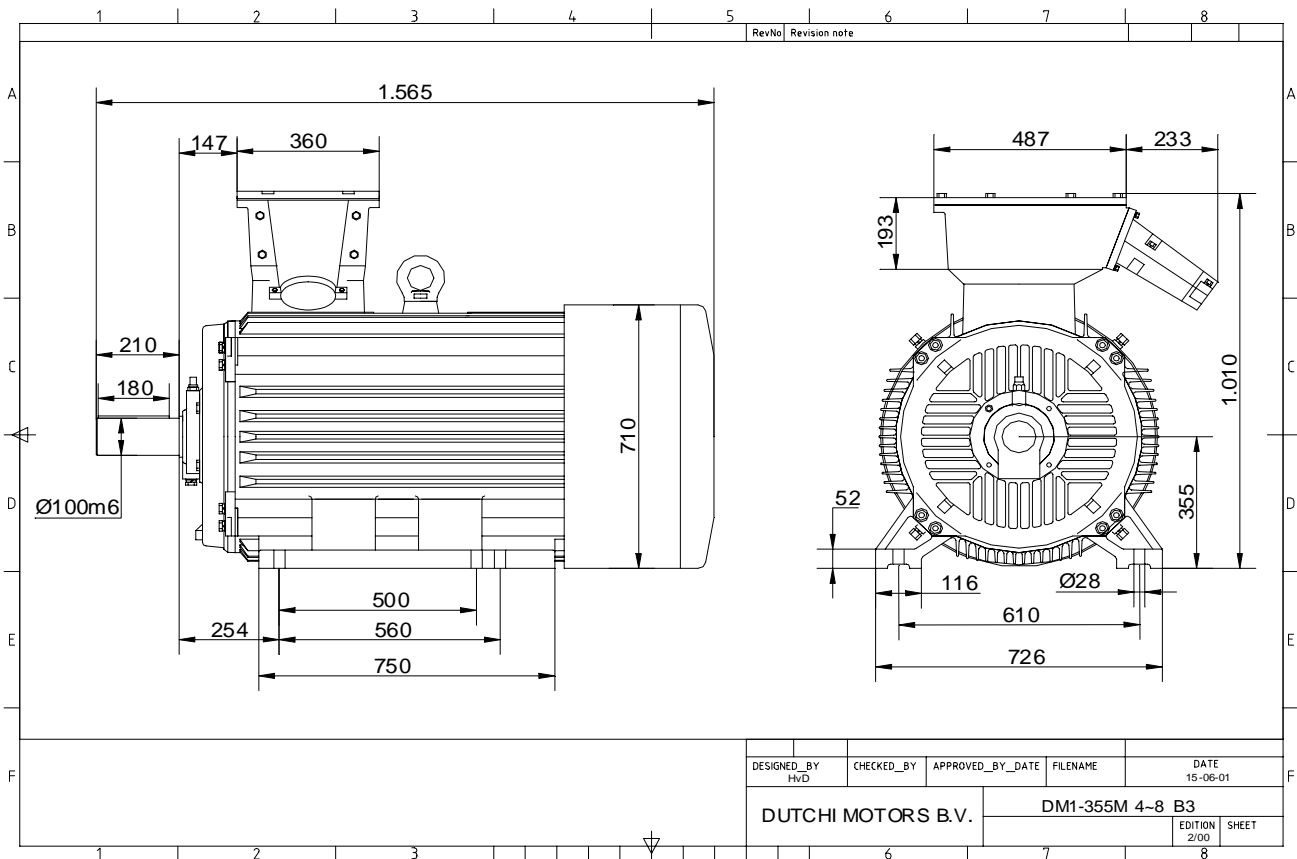


Power is our commodity, the world is our market !



Specification **IEC 60034-1**
 Manufacturer **Dutchi Motors B.V.**
 Motor type **DM1- 355 MY6**
 Rated power **200,00 kW S1** duty
 Speed **990** r.p.m
 Voltage **400 / 690** V
 Frequency **50** Hz
 Connection **Δ / Y**
 Amps full load **338 / 195** A
 Amps no-load(400V) **96,95** A
 Enclosure **IP 55**
 Insulation Class **F (temp. rise B (80 K))**

Max. coolant temp. **40°C**
 Max. altitude **1.000** mtr, above sea level
 Comment **3 x PTC 150°C**
 Cable entries **2 x Ø 70 mm + 1 x M20x1,5 (ptc)**

Feature **Cast-iron motor**
 Weight **1870** kg
 Catalog no. **11136C00D**
 Warranty **12~18 months**

Efficiency class **N/A**
 Load data 100% 75% 50% 25%
 Efficiency **95,8 95,6 94,7 91,3** %
 Power factor **0,89 0,87 0,81 0,63**

Sound pressure level (1m) **70,5** dB(A)
 Resistance R20 (open) **0,0131** Ω
 Resistance R20 **Δ 0,0088** Ω

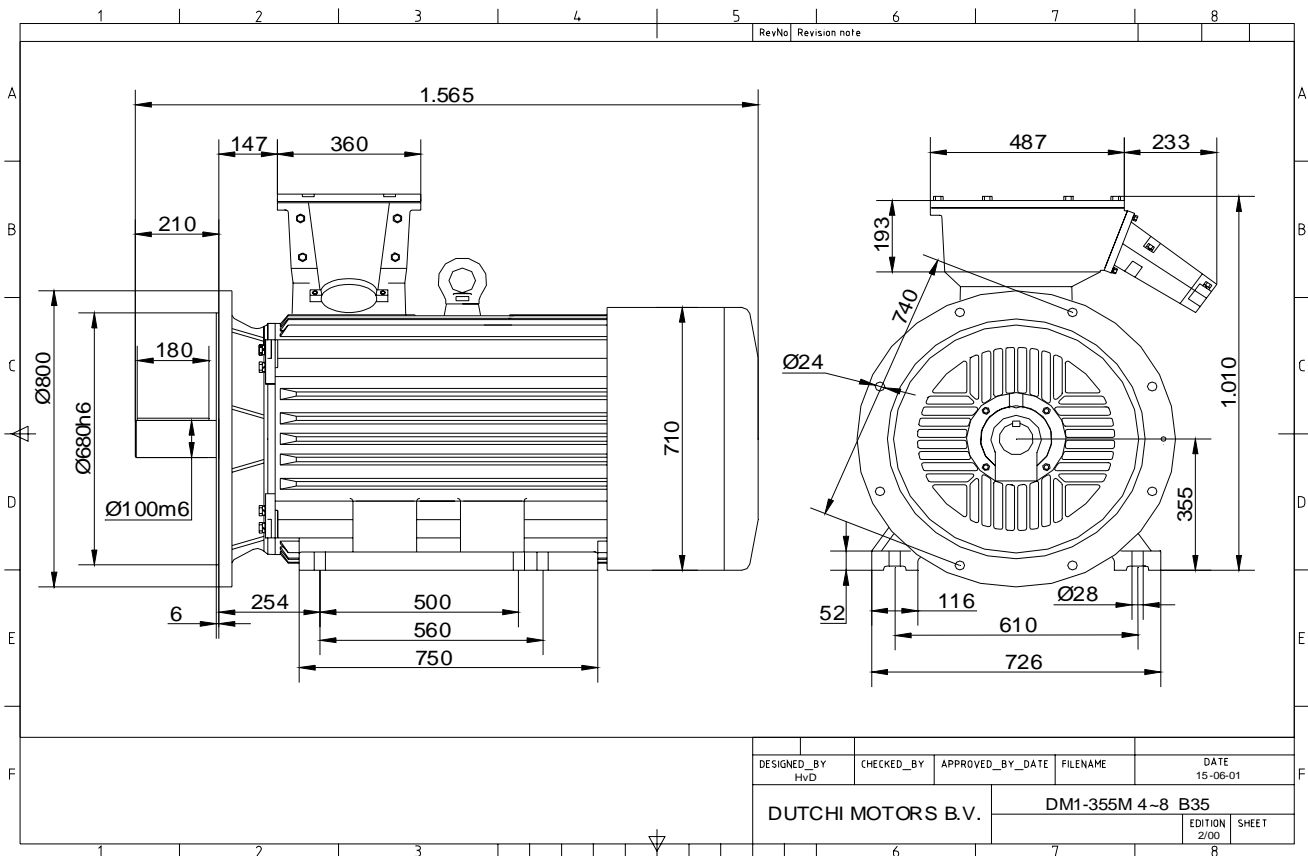
Full load torque **1929,29** Nm
 DOL Starting torque vs FL torque **1,87**
 DOL Pull up torque vs FL torque **1,48**
 DOL Pull out torque vs FL torque **3,52**
 Star-Delta Starting torque vs FL torque **0,58**
 Star-Delta Pull up torque vs FL torque **0,46**
 Star-Delta Pull out torque vs FL torque **1,10**
 DOL Starting current vs FL current **7,05**
 Star Delta Starting current vs FL current **2,20**
 Rotor Inertia **10,762** kgm²

Bearing DE **6322 - C3 or NU322**
 Bearing NDE **6320 - C3 (IM V1 7320B)**

| |
|--|
| |
| |
| |
| |
| |
| |
| |
| |

| | | | |
|--|--------|---|------------------|
| WI | Change | date | sign. |
| | | | |
| Dutchi Motors B.V. P.O. Box 5390 NL-6802 EJ ARNHEM Tel : +31-(0)26 - 3541 600 Fax : +31-(0)26 - 3541 650 | | Description Drawing made by : 27-04-04 | date 27-04-04 |
| | | sign. HvD | |
| | | dutchi.motors@dutchi.nl www.dutchi.com | |

Power is our commodity, the world is our market !



Specification **IEC 60034-1**
 Manufacturer **Dutchi Motors B.V.**
 Motor type **DM1- 355 MY6**
 Rated power **200,00 kW S1** duty
 Speed **990** r.p.m
 Voltage **400 / 690** V
 Frequency **50** Hz
 Connection **Δ / Y**
 Amps full load **338 / 195** A
 Amps no-load(400V) **96,95** A
 Enclosure **IP 55**
 Insulation Class **F (temp. rise B (80 K))**

Max. coolant temp. **40°C**
 Max. altitude **1.000** mtr, above sea level
 Comment **3 x PTC 150°C**
 Cable entries **2 x Ø 70 mm + 1 x M20x1,5 (ptc)**

Feature **Cast-iron motor**
 Weight **1870** kg
 Catalog no. **11536C00D**
 Warranty **12~18 months**

Efficiency class **N/A**
 Load data 100% 75% 50% 25%
 Efficiency **95,8 95,6 94,7 91,3** %
 Power factor **0,89 0,87 0,81 0,63**

Sound pressure level (1m) **70,5** dB(A)
 Resistance R20 (open) **0,0131** Ω
 Resistance R20 **Δ 0,0088** Ω

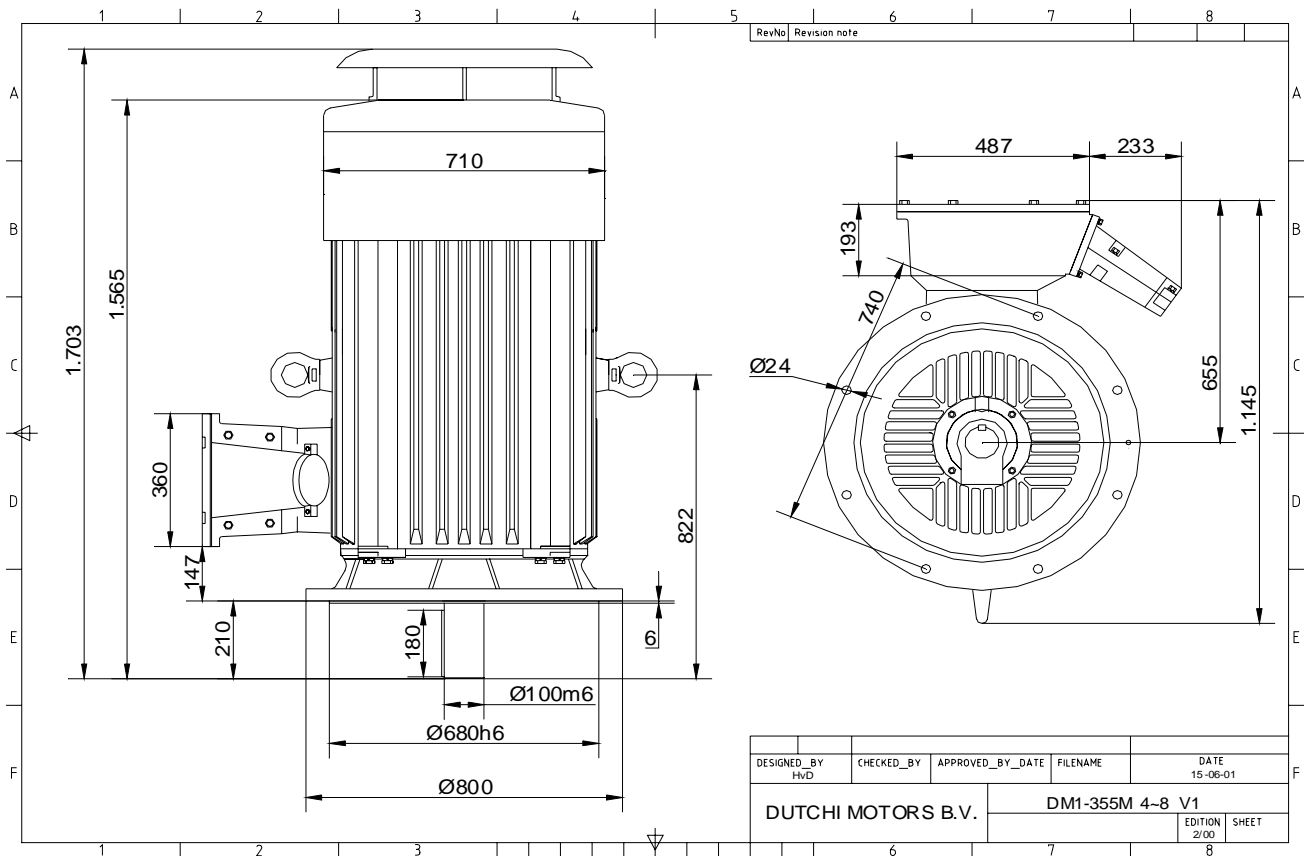
Full load torque **1929,29** Nm
 DOL Starting torque vs FL torque **1,87**
 DOL Pull up torque vs FL torque **1,48**
 DOL Pull out torque vs FL torque **3,52**
 Star-Delta Starting torque vs FL torque **0,58**
 Star-Delta Pull up torque vs FL torque **0,46**
 Star-Delta Pull out torque vs FL torque **1,10**
 DOL Starting current vs FL current **7,05**
 Star Delta Starting current vs FL current **2,20**
 Rotor Inertia **10,762** kgm²

Bearing DE **6322 - C3 or NU322**
 Bearing NDE **6320 - C3 (IM V1 7320B)**

| |
|--|
| |
| |
| |
| |
| |
| |
| |
| |

| | | | |
|----------------------------|--------|--------------------------------|----------|
| WI | Change | date | sign. |
| | | | |
| Dutchi Motors B.V. | | Description | date |
| P.O. Box 5390 | | Drawing made by : | 27-04-04 |
| NL-6802 EJ ARNHEM | | | |
| Tel : +31-(0)26 - 3541 600 | | dutchi.motors@dutchi.nl | |
| Fax : +31-(0)26 - 3541 650 | | www.dutchi.com | |

Power is our commodity, the world is our market !



Specification **IEC 60034-1**
 Manufacturer **Dutchi Motors B.V.**
 Motor type **DM1- 355 MY6**
 Rated power **200,00 kW S1** duty
 Speed **990** r.p.m
 Voltage **400 / 690** V
 Frequency **50** Hz
 Connection **Δ / Y**
 Amps full load **338 / 195** A
 Amps no-load(400V) **96,95** A
 Enclosure **IP 55**
 Insulation Class **F (temp. rise B (80 K))**

Max. coolant temp. **40°C**
 Max. altitude **1.000** mtr, above sea level
 Comment **3 x PTC 150°C**
 Cable entries **2 x Ø 70 mm + 1 x M20x1,5 (ptc)**

Feature **Cast-iron motor**
 Weight **1870** kg
 Catalog no. **11036C00D**
 Warranty **12~18 months**

Efficiency class **N/A**
 Load data 100% 75% 50% 25%
 Efficiency **95,8 95,6 94,7 91,3** %
 Power factor **0,89 0,87 0,81 0,63**

Sound pressure level (1m) **70,5** dB(A)
 Resistance R20 (open) **0,0131** Ω
 Resistance R20 **Δ 0,0088** Ω

Full load torque **1929,29** Nm
 DOL Starting torque vs FL torque **1,87**
 DOL Pull up torque vs FL torque **1,48**
 DOL Pull out torque vs FL torque **3,52**
 Star-Delta Starting torque vs FL torque **0,58**
 Star-Delta Pull up torque vs FL torque **0,46**
 Star-Delta Pull out torque vs FL torque **1,10**
 DOL Starting current vs FL current **7,05**
 Star Delta Starting current vs FL current **2,20**
 Rotor Inertia **10,762** kgm²

Bearing DE **6322 - C3 or NU322**
 Bearing NDE **6320 - C3 (IM V1 7320B)**

| |
|--|
| |
| |
| |
| |
| |
| |
| |
| |

| | | | |
|----------------------------|--------|--------------------------------|----------|
| WI | Change | date | sign. |
| | | | |
| Dutchi Motors B.V. | | Description | date |
| P.O. Box 5390 | | Drawing made by : | 27-04-04 |
| NL-6802 EJ ARNHEM | | | HvD |
| Tel : +31-(0)26 - 3541 600 | | dutchi.motors@dutchi.nl | |
| Fax : +31-(0)26 - 3541 650 | | www.dutchi.com | |