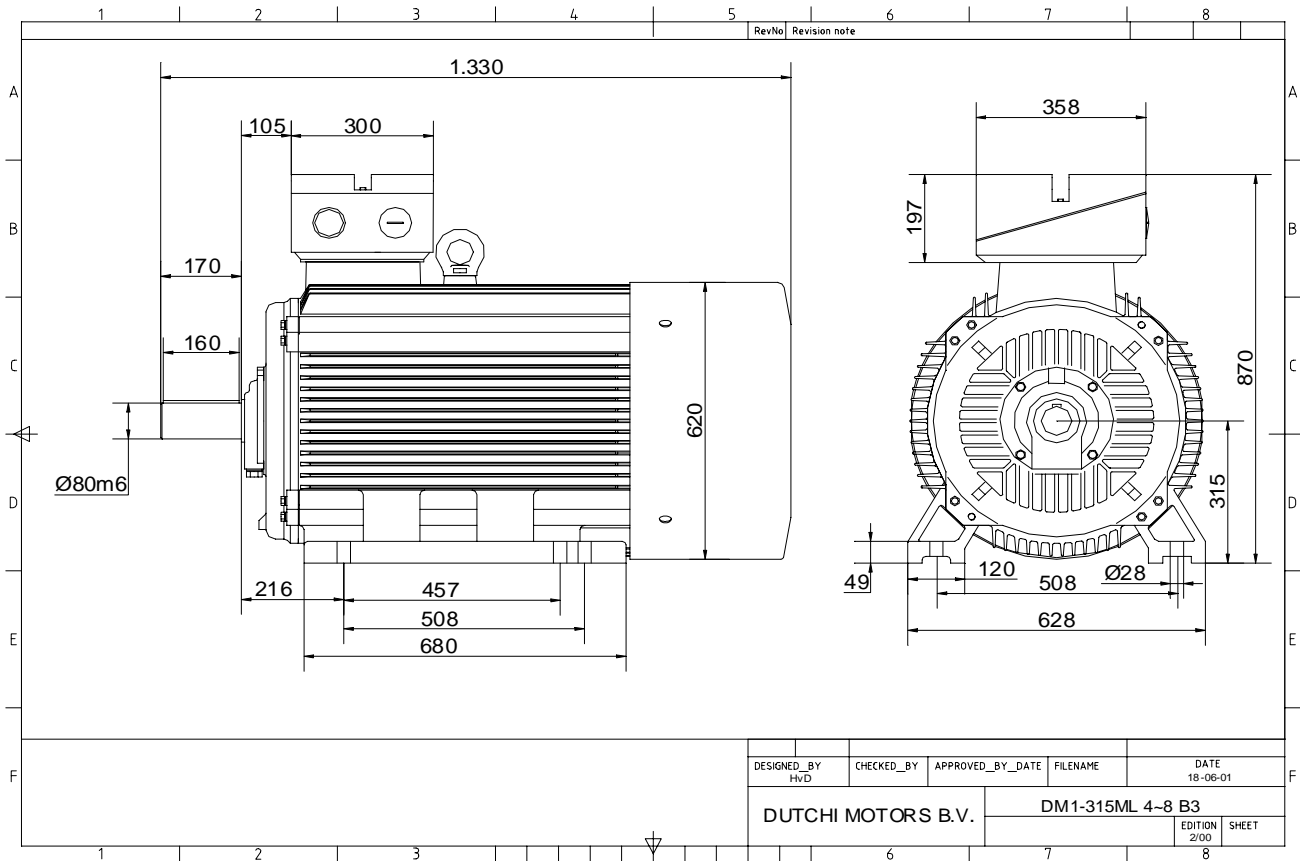


Power is our commodity, the world is our market !

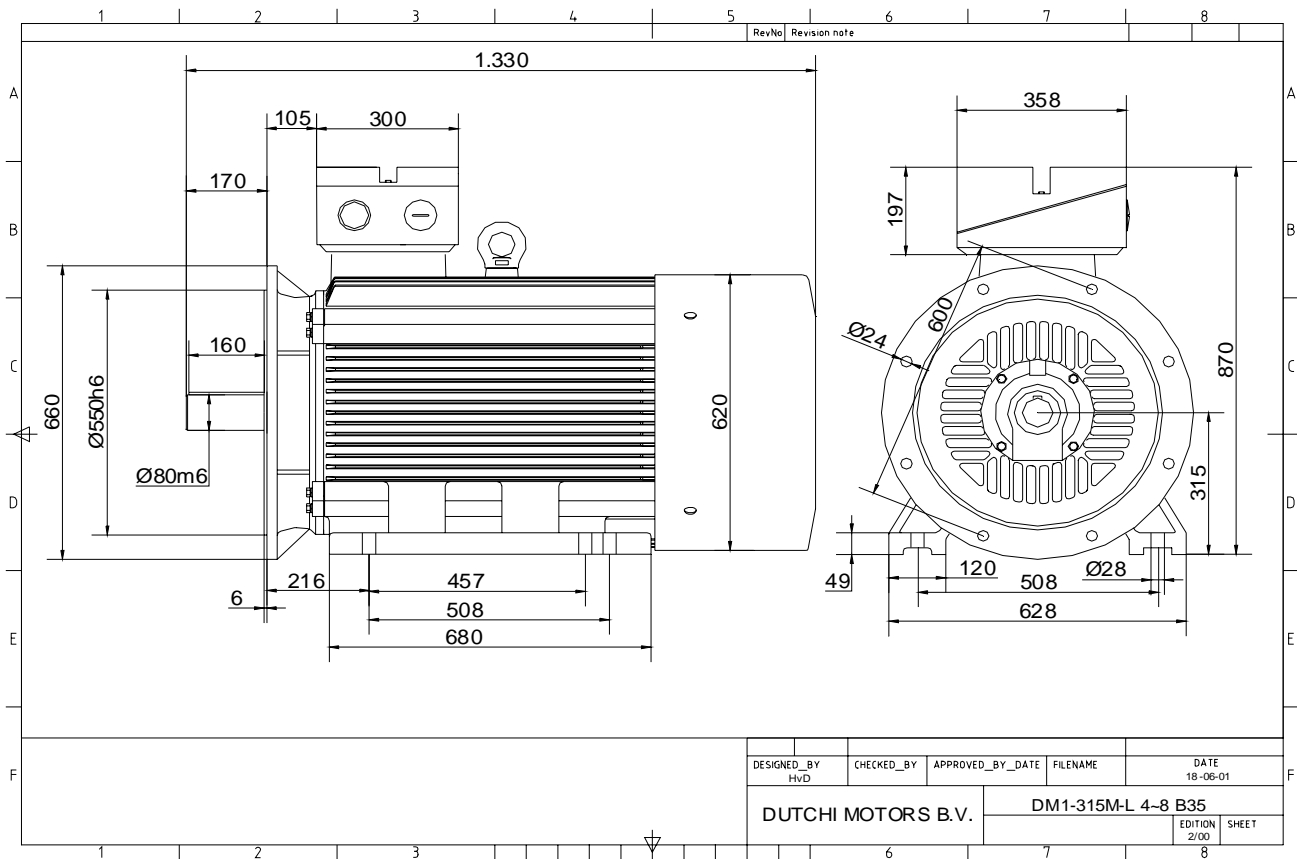


Specification	IEC 60034-1
Manufacturer	Dutchi Motors B.V.
Motor type	DM1- 315 LX6
Rated power	132 kW S1 duty
Speed	990 r.p.m
Voltage	400 / 690 V
Frequency	50 Hz
Connection	Δ / Y
Amps full load	230 / 133 A
Amps no-load(400V)	62,40 A
Enclosure	IP 55
Insulation Class	F (temp. rise B (80 K))
Max. coolant temp.	40°C
Max. altitude	1.000 mtr, above sea level
Comment	3 x PTC 150°C
Cable entries	2 x M63x1,5 + 1 x M20x1,5 (ptc)
Feature	Cast-iron motor
Weight	1175 kg
Catalog no.	11136B32D
Warranty	12~18 months

Efficiency class	N/A			
Load data	100%	75%	50%	25%
Efficiency	94,9	94,9	94,1	90,4 %
Power factor	0,87	0,86	0,81	0,64
Sound pressure level (1m)				74,5 dB(A)
Resistance R20 (open)				0,0267 Ω
Resistance R20	Δ			0,0178 Ω
Full load torque				1273 Nm
DOL Starting torque vs FL torque				1,97
DOL Pull up torque vs FL torque				1,41
DOL Pull out torque vs FL torque				2,90
Star-Delta Starting torque vs FL torque				0,61
Star-Delta Pull up torque vs FL torque				0,44
Star-Delta Pull out torque vs FL torque				0,91
DOL Starting current vs FL current				6,09
Star Delta Starting current vs FL current				1,90
Rotor Inertia				5,5400 kgm ²
Bearing DE				6319 - C3 or NU319
Bearing NDE				6319 - C3 (IM V1 7319B)

WI	Change	date	sign.
Dutchi Motors B.V. P.O. Box 5390 NL-6802 EJ ARNHEM Tel : +31-(0)26 - 3541 600 Fax : +31-(0)26 - 3541 650		Discription Drawing made by :	date sign. HvD
dutchi.motors@dutchi.nl www.dutchi.com		27-04-04	

Power is our commodity, the world is our market !

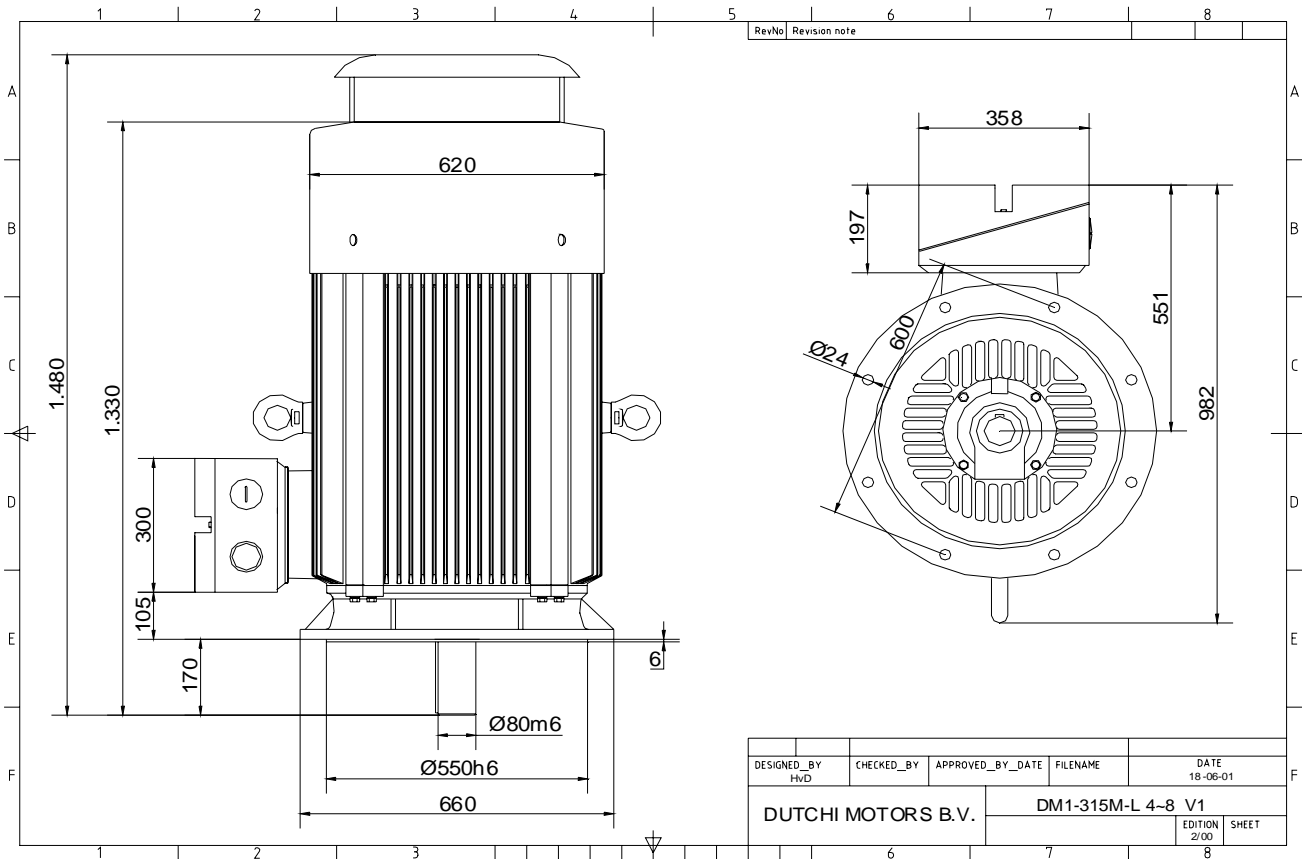


Specification	IEC 60034-1
Manufacturer	Dutchi Motors B.V.
Motor type	DM1- 315 LX6
Rated power	132 kW S1 duty
Speed	990 r.p.m
Voltage	400 / 690 V
Frequency	50 Hz
Connection	Δ / Y
Amps full load	230 / 133 A
Amps no-load(400V)	62,40 A
Enclosure	IP 55
Insulation Class	F (temp. rise B (80 K))
Max. coolant temp.	40°C
Max. altitude	1.000 mtr, above sea level
Comment	3 x PTC 150°C
Cable entries	2 x M63x1,5 + 1 x M20x1,5 (ptc)
Feature	Cast-iron motor
Weight	1175 kg
Catalog no.	11536B32D
Warranty	12~18 months

Efficiency class	N/A			
Load data	100%	75%	50%	25%
Efficiency	94,9	94,9	94,1	90,4 %
Power factor	0,87	0,86	0,81	0,64
Sound pressure level (1m)	74,5 dB(A)			
Resistance R20 (open)	0,0267 Ω			
Resistance R20	Δ 0,0178 Ω			
Full load torque	1273 Nm			
DOL Starting torque vs FL torque	1,97			
DOL Pull up torque vs FL torque	1,41			
DOL Pull out torque vs FL torque	2,90			
Star-Delta Starting torque vs FL torque	0,61			
Star-Delta Pull up torque vs FL torque	0,44			
Star-Delta Pull out torque vs FL torque	0,91			
DOL Starting current vs FL current	6,09			
Star Delta Starting current vs FL current	1,90			
Rotor Inertia	5,5400 kgm ²			
Bearing DE	6319 - C3 or NU319			
Bearing NDE	6319 - C3 (IM V1 7319B)			

WI	Change	date	sign.
Dutchi Motors B.V. P.O. Box 5390 NL-6802 EJ ARNHEM Tel : +31-(0)26 - 3541 600 Fax : +31-(0)26 - 3541 650		Discription Drawing made by : 27-04-04	date sign. HvD
dutchi.motors@dutchi.nl www.dutchi.com			

Power is our commodity, the world is our market !



Specification **IEC 60034-1**
 Manufacturer **Dutchi Motors B.V.**
 Motor type **DM1- 315 LX6**
 Rated power **132** kW **S1** duty
 Speed **990** r.p.m
 Voltage **400 / 690** V
 Frequency **50** Hz
 Connection **Δ / Y**
 Amps full load **230 / 133** A
 Amps no-load(400V) **62,40** A
 Enclosure **IP 55**
 Insulation Class **F (temp. rise B (80 K))**

Max. coolant temp. **40°C**
 Max. altitude **1.000** mtr, above sea level
 Comment **3 x PTC 150°C**
 Cable entries **2 x M63x1,5 + 1 x M20x1,5 (ptc)**

Feature **Cast-iron motor**
 Weight **1175** kg
 Catalog no. **11036B32D**
 Warranty **12-18 months**

Efficiency class **N/A**
 Load data 100% 75% 50% 25%
 Efficiency **94,9 94,9 94,1 90,4** %
 Power factor **0,87 0,86 0,81 0,64**

Sound pressure level (1m) **74,5** dB(A)
 Resistance R20 (open) **0,0267** Ω
 Resistance R20 **Δ 0,0178** Ω

Full load torque **1273** Nm
 DOL Starting torque vs FL torque **1,97**
 DOL Pull up torque vs FL torque **1,41**
 DOL Pull out torque vs FL torque **2,90**
 Star-Delta Starting torque vs FL torque **0,61**
 Star-Delta Pull up torque vs FL torque **0,44**
 Star-Delta Pull out torque vs FL torque **0,91**
 DOL Starting current vs FL current **6,09**
 Star Delta Starting current vs FL current **1,90**
 Rotor Inertia **5,5400** kgm²

Bearing DE **6319 - C3 or NU319**
 Bearing NDE **6319 - C3 (IM V1 7319B)**

WI	Change	date	sign.
Dutchi Motors B.V.		Description	date
P.O. Box 5390		Drawing made by :	27-04-04
NL-6802 EJ ARNHEM			
Tel : +31-(0)26 - 3541 600		dutchi.motors@dutchi.nl	
Fax : +31-(0)26 - 3541 650		www.dutchi.com	