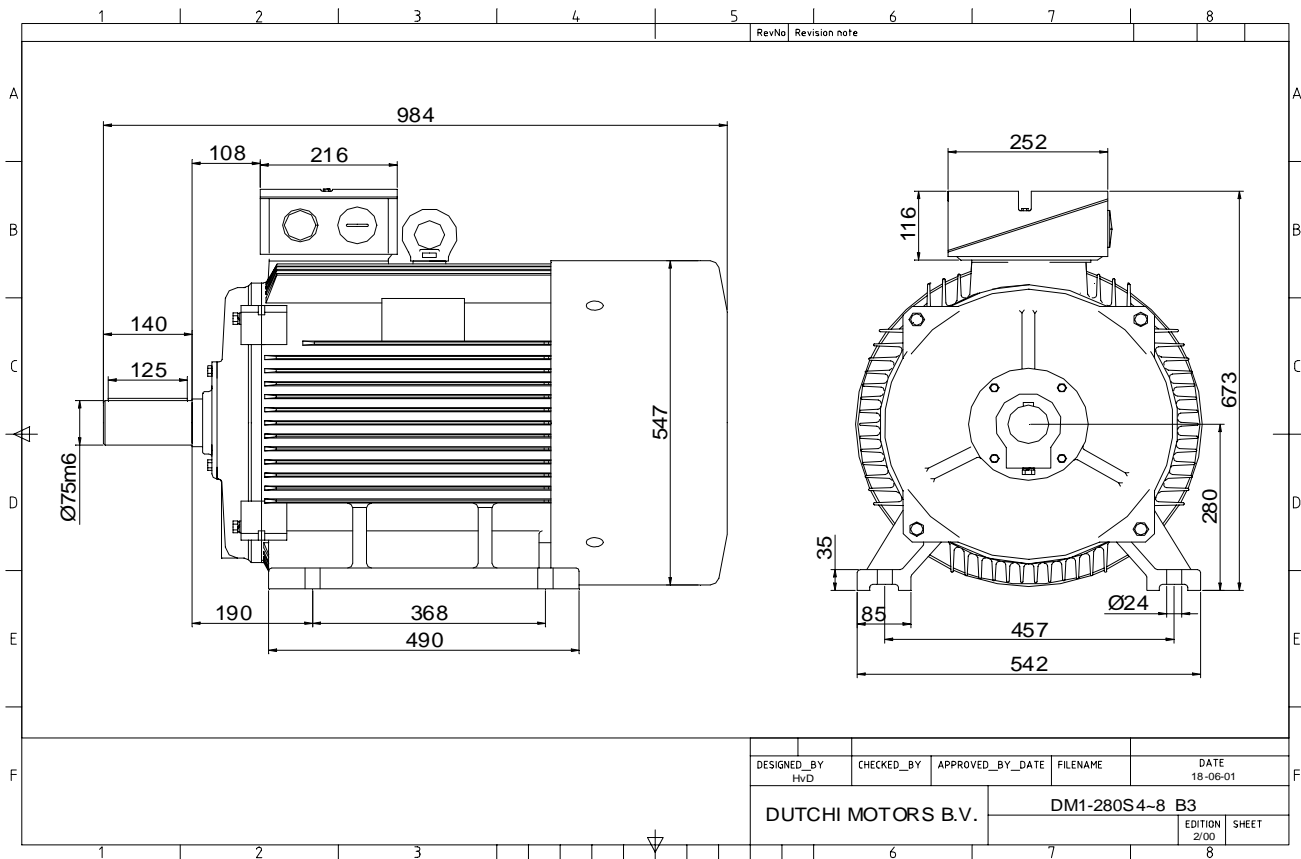


Power is our commodity, the world is our market !

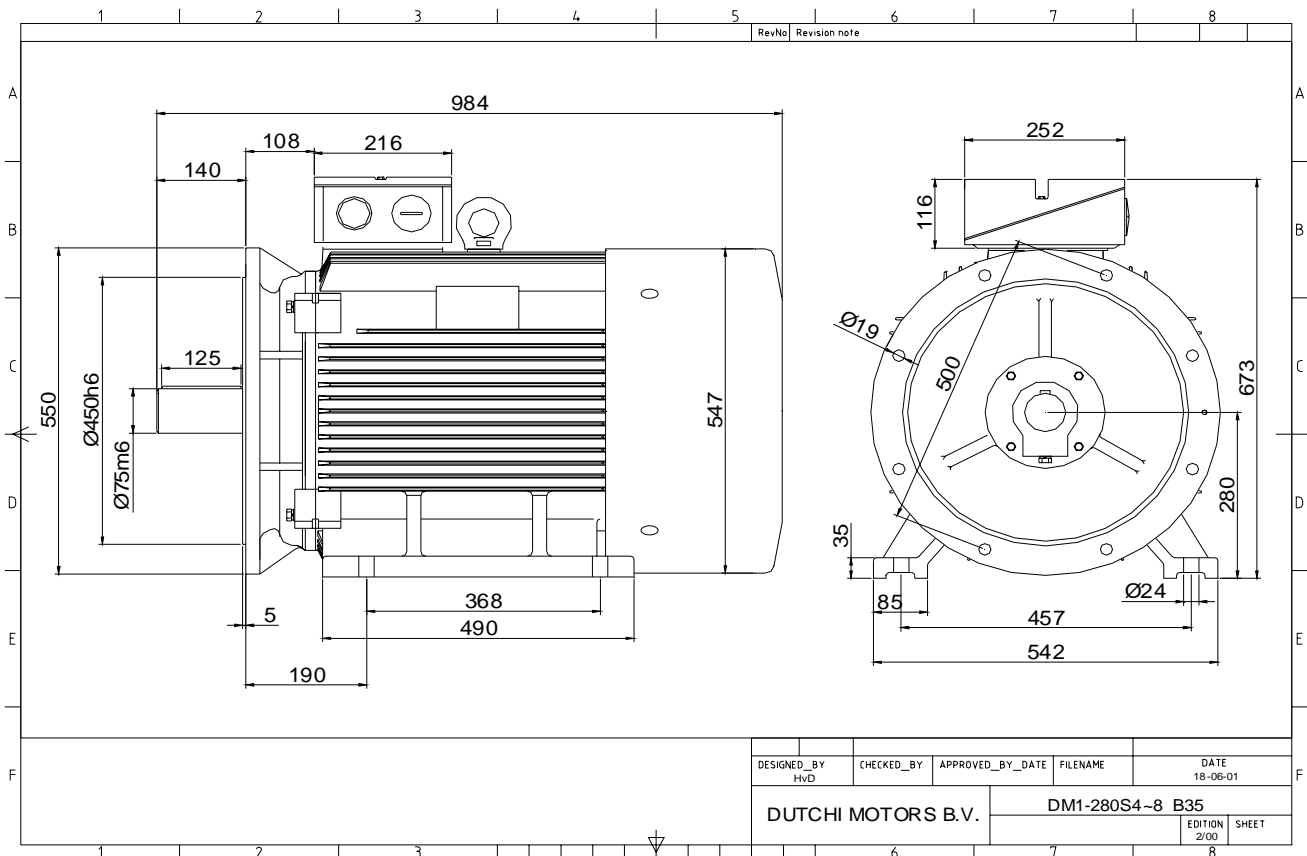


Specification	IEC 60034-1
Manufacturer	Dutchi Motors B.V.
Motor type	DM1- 280 S6
Rated power	45 kW S1 duty
Speed	980 r.p.m
Voltage	400 / 690 V
Frequency	50 Hz
Connection	Δ / Y
Amps full load	80,2 / 46,3 A
Amps no-load(400V)	26,90 A
Enclosure	IP 55
Insulation Class	F (temp. rise B (80 K))
Max. coolant temp.	40°C
Max. altitude	1.000 mtr, above sea level
Comment	3 x PTC 150°C
Cable entries	2 x M63x1,5 + 1 x M20x1,5 (ptc)
Feature	Cast-iron motor
Weight	465 kg
Catalog no.	11136A45D
Warranty	12~18 months

Efficiency class	N/A			
Load data	100%	75%	50%	25%
Efficiency	92,4	92,5	91,5	86,6 %
Power factor	0,88	0,85	0,77	0,56
Sound pressure level (1m)				71,2 dB(A)
Resistance R20 (open)				0,179 Ω
Resistance R20	Δ			0,120 Ω
Full load torque				439 Nm
DOL Starting torque vs FL torque				1,98
DOL Pull up torque vs FL torque				1,62
DOL Pull out torque vs FL torque				2,99
Star-Delta Starting torque vs FL torque				0,62
Star-Delta Pull up torque vs FL torque				0,51
Star-Delta Pull out torque vs FL torque				0,93
DOL Starting current vs FL current				6,53
Star Delta Starting current vs FL current				2,04
Rotor Inertia				1,3340 kgm ²
Bearing DE				6317 - C3 or NU317
Bearing NDE				6317 - C3

WI	Change	date	sign.
Dutchi Motors B.V.		Description	date
P.O. Box 5390		Drawing made by :	27-04-04
NL-6802 EJ ARNHEM			
Tel : +31-(0)26 - 3541 600		dutchi.motors@dutchi.nl	
Fax : +31-(0)26 - 3541 650		www.dutchi.com	

Power is our commodity, the world is our market !



Specification **IEC 60034-1**
 Manufacturer **Dutchi Motors B.V.**
 Motor type **DM1- 280 S6**
 Rated power **45** kW **S1** duty
 Speed **980** r.p.m
 Voltage **400** / **690** V
 Frequency **50** Hz
 Connection **Δ** / **Y**
 Amps full load **80,2** / **46,3** A
 Amps no-load(400V) **26,90** A
 Enclosure **IP 55**
 Insulation Class **F (temp. rise B (80 K))**

Max. coolant temp. **40°C**
 Max. altitude **1.000** mtr, above sea level
 Comment **3 x PTC 150°C**
 Cable entries **2 x M63x1,5 + 1 x M20x1,5 (ptc)**

Feature **Cast-iron motor**
 Weight **465** kg
 Catalog no. **11536A45D**
 Warranty **12~18 months**

Efficiency class **N/A**
 Load data 100% 75% 50% 25%
 Efficiency **92,4 92,5 91,5 86,6** %
 Power factor **0,88 0,85 0,77 0,56**

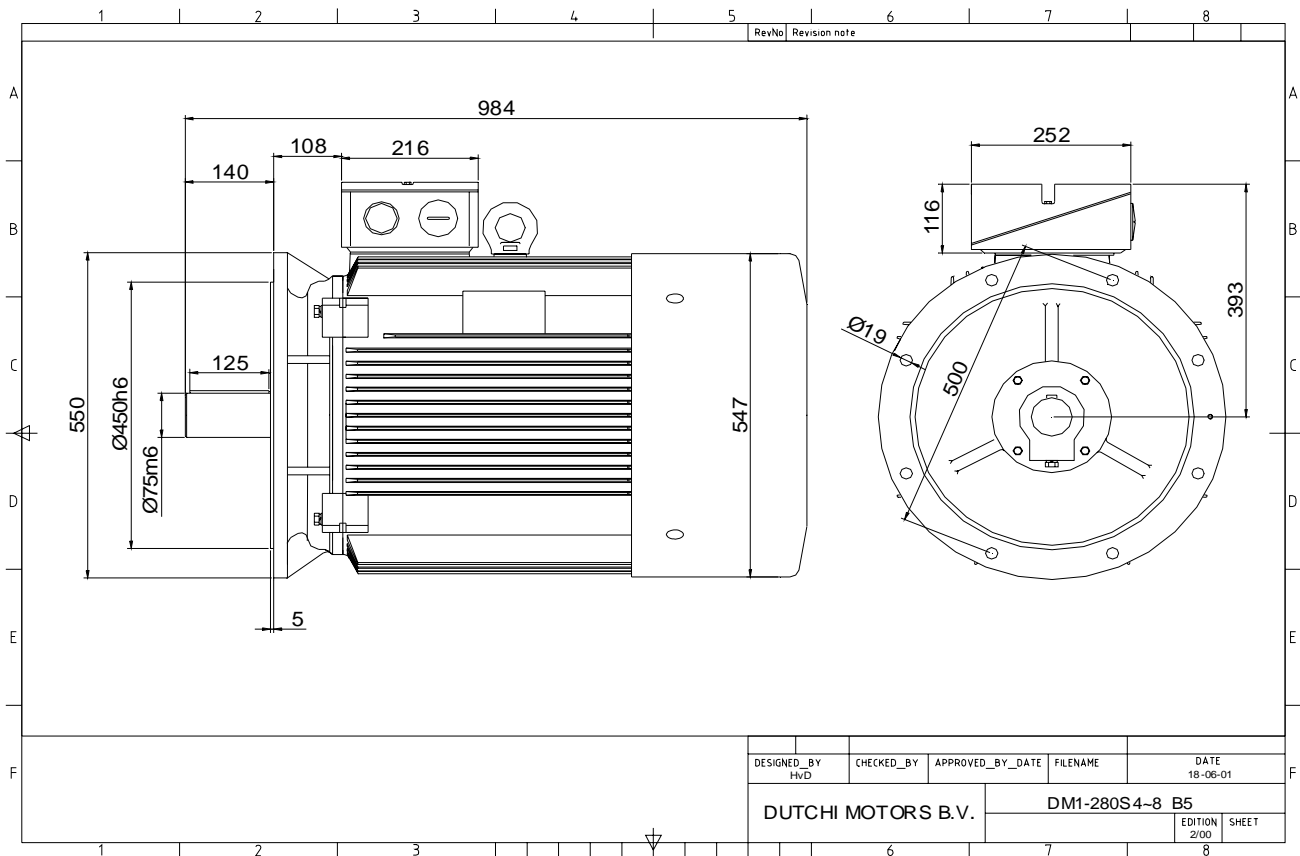
Sound pressure level (1m) **71,2** dB(A)
 Resistance R20 (open) **0,179** Ω
 Resistance R20 **Δ 0,120** Ω

Full load torque **439** Nm
 DOL Starting torque vs FL torque **1,98**
 DOL Pull up torque vs FL torque **1,62**
 DOL Pull out torque vs FL torque **2,99**
 Star-Delta Starting torque vs FL torque **0,62**
 Star-Delta Pull up torque vs FL torque **0,51**
 Star-Delta Pull out torque vs FL torque **0,93**
 DOL Starting current vs FL current **6,53**
 Star Delta Starting current vs FL current **2,04**
 Rotor Inertia **1,3340** kgm²

Bearing DE **6317 - C3 or NU317**
 Bearing NDE **6317 - C3**

WI	Change	date	sign.
Dutchi Motors B.V. P.O. Box 5390 NL-6802 EJ ARNHEM Tel : +31-(0)26 - 3541 600 Fax : +31-(0)26 - 3541 650		Discription Drawing made by : 27-04-04	date sign. HvD
dutchi.motors@dutchi.nl www.dutchi.com			

Power is our commodity, the world is our market !

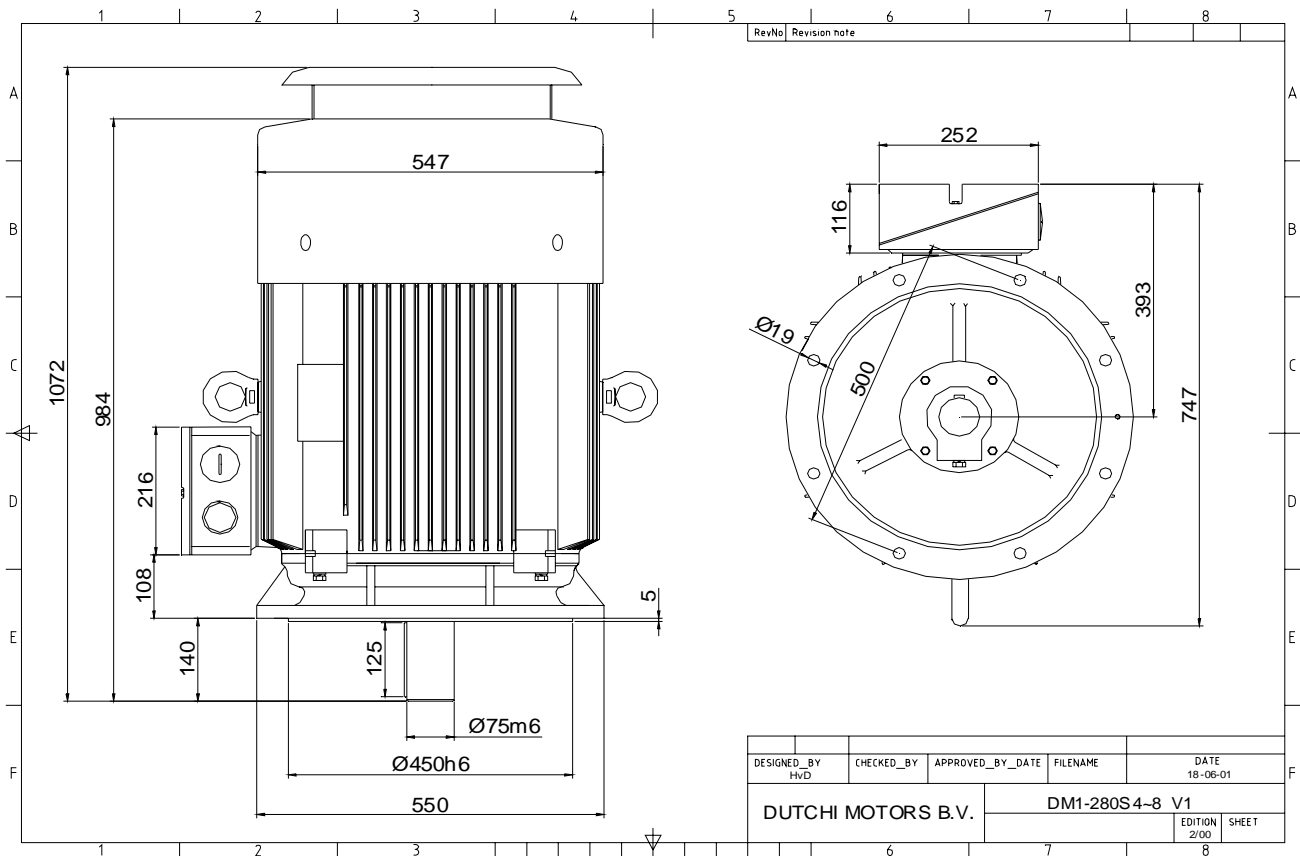


Specification	IEC 60034-1
Manufacturer	Dutchi Motors B.V.
Motor type	DM1- 280 S6
Rated power	45 kW S1 duty
Speed	980 r.p.m
Voltage	400 / 690 V
Frequency	50 Hz
Connection	Δ / Y
Amps full load	80,2 / 46,3 A
Amps no-load(400V)	26,90 A
Enclosure	IP 55
Insulation Class	F (temp. rise B (80 K))
Max. coolant temp.	40°C
Max. altitude	1.000 mtr, above sea level
Comment	3 x PTC 150°C
Cable entries	2 x M63x1,5 + 1 x M20x1,5 (ptc)
Feature	Cast-iron motor
Weight	465 kg
Catalog no.	11236A45D
Warranty	12~18 months

Efficiency class	N/A			
Load data	100%	75%	50%	25%
Efficiency	92,4	92,5	91,5	86,6 %
Power factor	0,88	0,85	0,77	0,56
Sound pressure level (1m)				71,2 dB(A)
Resistance R20 (open)				0,179 Ω
Resistance R20	Δ			0,120 Ω
Full load torque				439 Nm
DOL Starting torque vs FL torque				1,98
DOL Pull up torque vs FL torque				1,62
DOL Pull out torque vs FL torque				2,99
Star-Delta Starting torque vs FL torque				0,62
Star-Delta Pull up torque vs FL torque				0,51
Star-Delta Pull out torque vs FL torque				0,93
DOL Starting current vs FL current				6,53
Star Delta Starting current vs FL current				2,04
Rotor Inertia				1,3340 kgm ²
Bearing DE				6317 - C3 or NU317
Bearing NDE				6317 - C3

WI	Change	date	sign.
Dutchi Motors B.V. P.O. Box 5390 NL-6802 EJ ARNHEM Tel : +31-(0)26 - 3541 600 Fax : +31-(0)26 - 3541 650		Description	date
		Drawing made by :	27-04-04
		dutchi.motors@dutchi.nl www.dutchi.com	

Power is our commodity, the world is our market !



Specification **IEC 60034-1**
 Manufacturer **Dutchi Motors B.V.**
 Motor type **DM1- 280 S6**
 Rated power **45** kW **S1** duty
 Speed **980** r.p.m
 Voltage **400 / 690** V
 Frequency **50** Hz
 Connection **Δ / Y**
 Amps full load **80,2 / 46,3** A
 Amps no-load(400V) **26,90** A
 Enclosure **IP 55**
 Insulation Class **F (temp. rise B (80 K))**

Max. coolant temp. **40°C**
 Max. altitude **1.000** mtr, above sea level
 Comment **3 x PTC 150°C**
 Cable entries **2 x M63x1,5 + 1 x M20x1,5 (ptc)**

Feature **Cast-iron motor**
 Weight **465** kg
 Catalog no. **11036A45D**
 Warranty **12~18 months**

Efficiency class **N/A**
 Load data 100% 75% 50% 25%
 Efficiency **92,4 92,5 91,5 86,6** %
 Power factor **0,88 0,85 0,77 0,56**

Sound pressure level (1m) **71,2** dB(A)
 Resistance R20 (open) **0,179** Ω
 Resistance R20 **Δ 0,120** Ω

Full load torque **439** Nm
 DOL Starting torque vs FL torque **1,98**
 DOL Pull up torque vs FL torque **1,62**
 DOL Pull out torque vs FL torque **2,99**
 Star-Delta Starting torque vs FL torque **0,62**
 Star-Delta Pull up torque vs FL torque **0,51**
 Star-Delta Pull out torque vs FL torque **0,93**
 DOL Starting current vs FL current **6,53**
 Star Delta Starting current vs FL current **2,04**
 Rotor Inertia **1,3340** kgm2

Bearing DE **6317 - C3 or NU317**
 Bearing NDE **6317 - C3**

WI	Change	date	sign.
Dutchi Motors B.V. P.O. Box 5390 NL-6802 EJ ARNHEM Tel : +31-(0)26 - 3541 600 Fax : +31-(0)26 - 3541 650		Discription Drawing made by : 27-04-04	date sign. HVD
dutchi.motors@dutchi.nl www.dutchi.com			